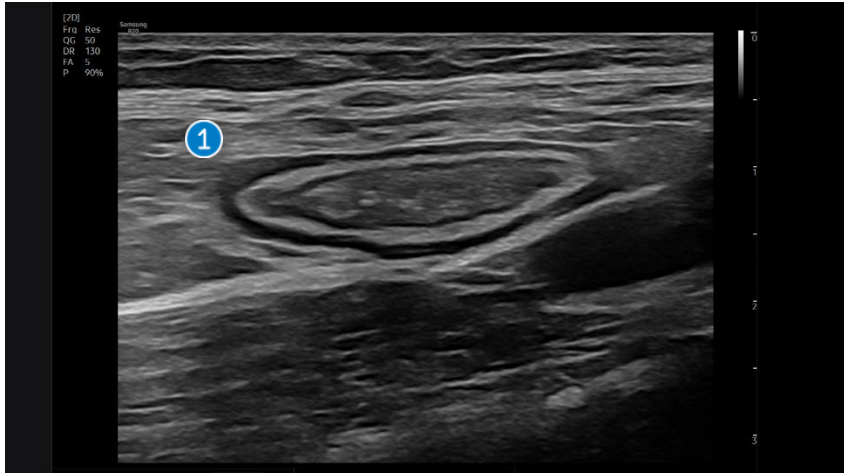


# BowelAssist™

## R20 Quick Guide

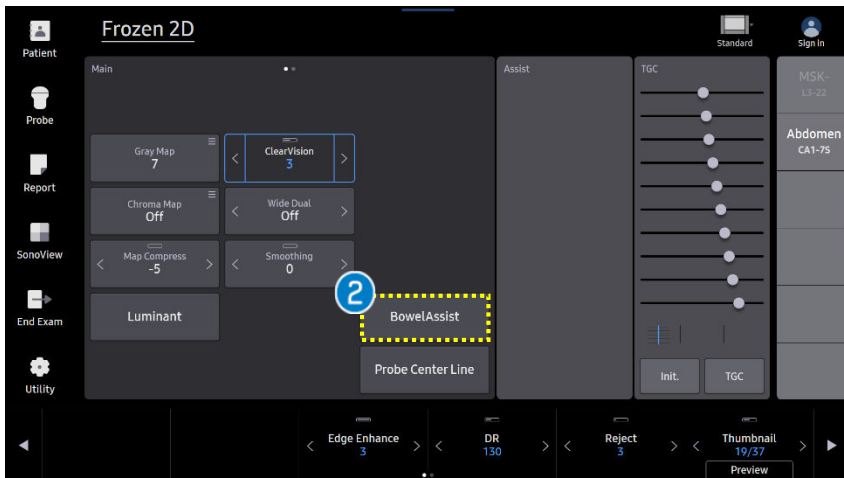


# 1. Start BowelAssist™



## 1 Image Acquisition

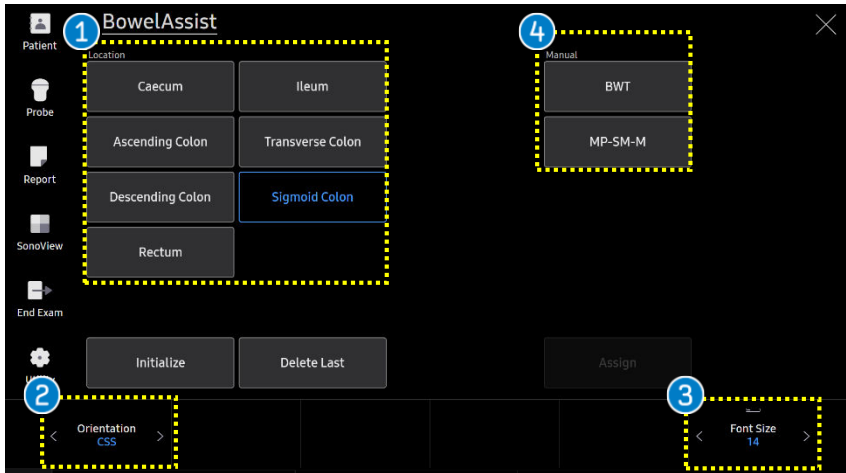
Acquire Bowel image in 2D mode.  
\* *Zoom mode is available.*



## 2 BowelAssist

Press [BowelAssist] to activate.

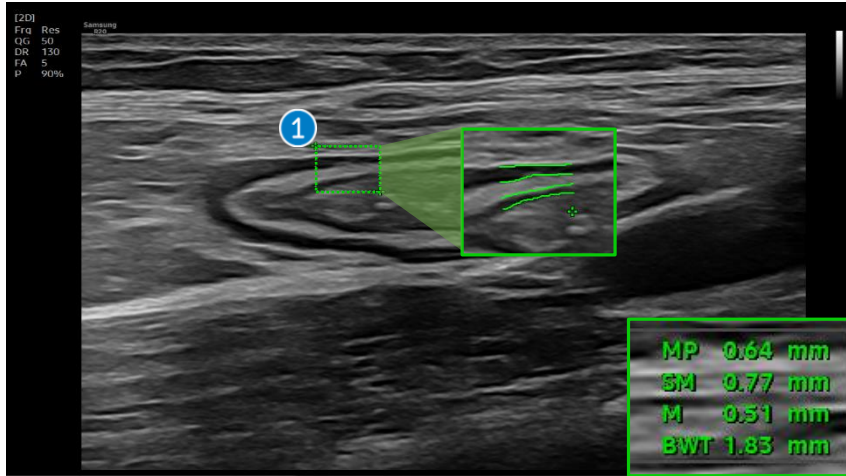
## 2. Measure Step (1)



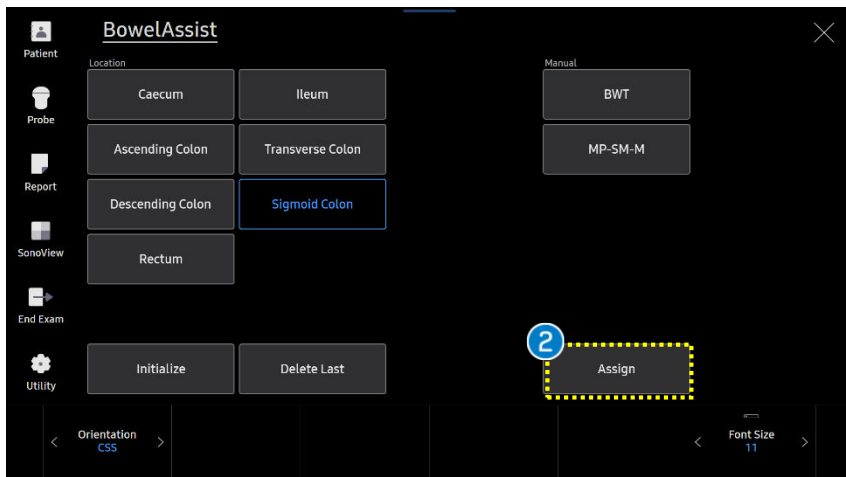
1	Location	Select its location that you've captured.
2	Orientation	Select the orientation between CSS/LONG. *CSS: Cross sectional Segment LONG: Longitudinal
3	Font Size	Change the font size 8 to 30.
4	Manual	Measure manually with BWT/ MP-SM-M. *BWT: Bowel Wall Thickness MP: Muscularis Propria SM: Submucosa M: Musosa

BowelAssist™

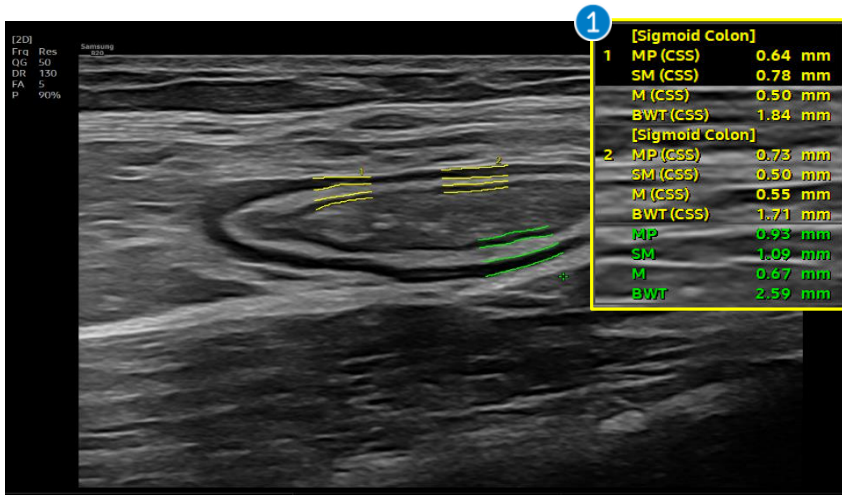
# 2. Measure Step (2)



<p>1 ROI</p>	<p>Put the ROI including 3 layers. <i>(Muscularis Propria, Submucosa, Mucosa)</i></p>		
<p>2 Assign</p>	<p>Press Assign button after putting the ROI to make it assign to the Report page.</p> <table border="1"> <tr> <td data-bbox="1275 474 1495 622"> <p>MP 0.64 mm SM 0.77 mm M 0.51 mm BWT 1.83 mm</p> </td> <td data-bbox="1495 474 1870 622"> <p>[Sigmoid Colon] 1 MP (CSS) 0.64 mm SM (CSS) 0.78 mm M (CSS) 0.50 mm BWT (CSS) 1.84 mm</p> </td> </tr> </table>	<p>MP 0.64 mm SM 0.77 mm M 0.51 mm BWT 1.83 mm</p>	<p>[Sigmoid Colon] 1 MP (CSS) 0.64 mm SM (CSS) 0.78 mm M (CSS) 0.50 mm BWT (CSS) 1.84 mm</p>
<p>MP 0.64 mm SM 0.77 mm M 0.51 mm BWT 1.83 mm</p>	<p>[Sigmoid Colon] 1 MP (CSS) 0.64 mm SM (CSS) 0.78 mm M (CSS) 0.50 mm BWT (CSS) 1.84 mm</p>		



## 2. Measure Step (3)



1 Get Avg.  
value

Measure 3 times in different area to get average value.

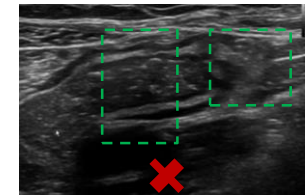
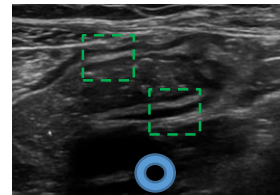
*(Ex. 2 times in Anterior wall, 1 time in Posterior wall)*

Abdomen

Sigmoid Colon

	1	2	3	1
BWT (CSS)	2.05 mm	1.84	1.71	2.59 Avg
M (CSS)	0.57 mm	0.50	0.55	0.67 Avg
SM (CSS)	0.79 mm	0.78	0.50	1.09 Avg
MP (CSS)	0.77 mm	0.64	0.73	0.93 Avg

### Tips & Tricks



- Drag and draw an ROI box within 1cm X 1cm.
- Focus only on the wall area you want to view.
- Measure the wall where the bowel layers are clearly distinguished.
- Do not include both Anterior wall and Posterior wall within a single ROI box.
- Avoid measuring areas where the bowel wall margin is unclear due to gas shadow or bowel movement, etc.
- If measurement is necessary, measure it manually.

- The features, options may not be commercially available in some countries.
- Sales and shipments are effective only after the approval by the regulatory affairs. Please contact your local sales representative for further details.
- This Quick guide does not include all of the details of instruction, for more detail, please refer to R20 User Manual.
- Do not distribute this document to customers unless relevant regulatory and legal affairs officers approve such distribution.
- This User Quick Guide is based on R20 V1.01.
- Disclaimer: Some Images in this content were obtained from other system.

**SAMSUNG MEDISON CO., LTD.**

© 2025 Samsung Medison All Rights Reserved.

Samsung Medison reserves the right to modify the design, packaging, specifications, and features shown herein, without prior notice or obligation.