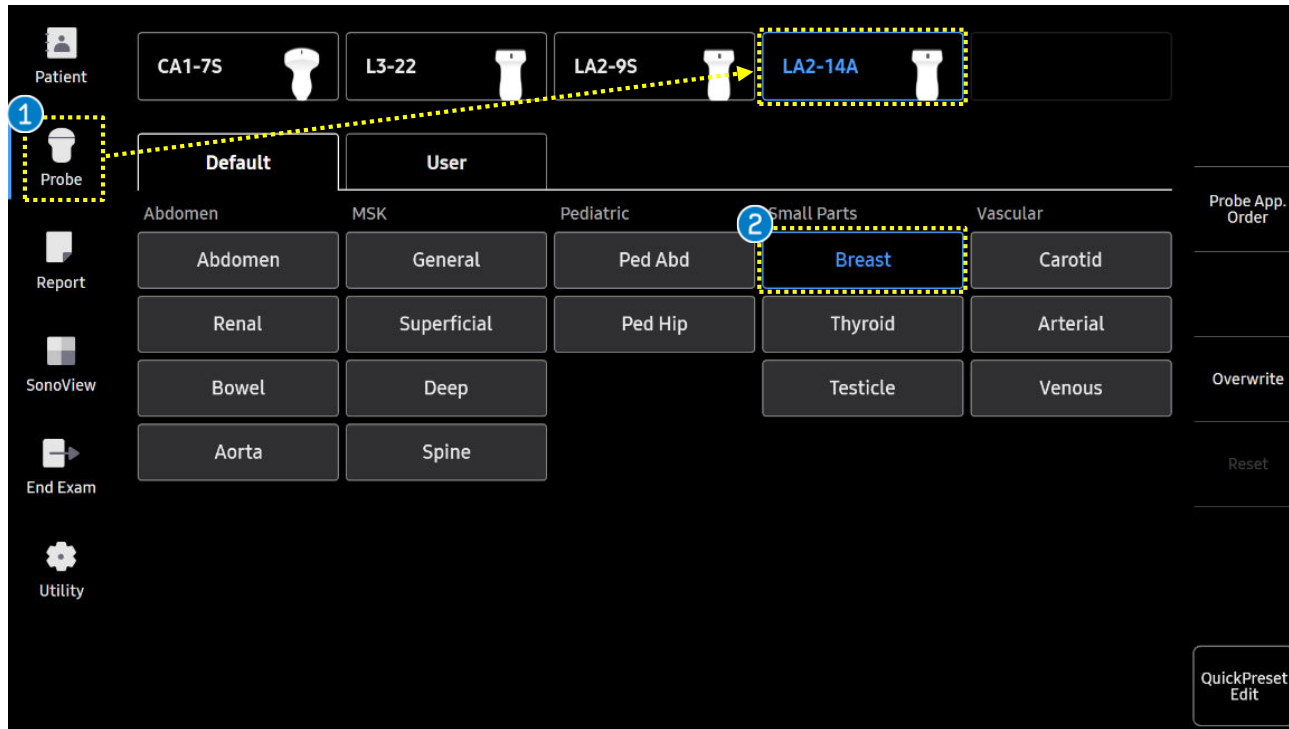


Live BreastAssist™

R20 Quick Guide



1. Probe and Preset



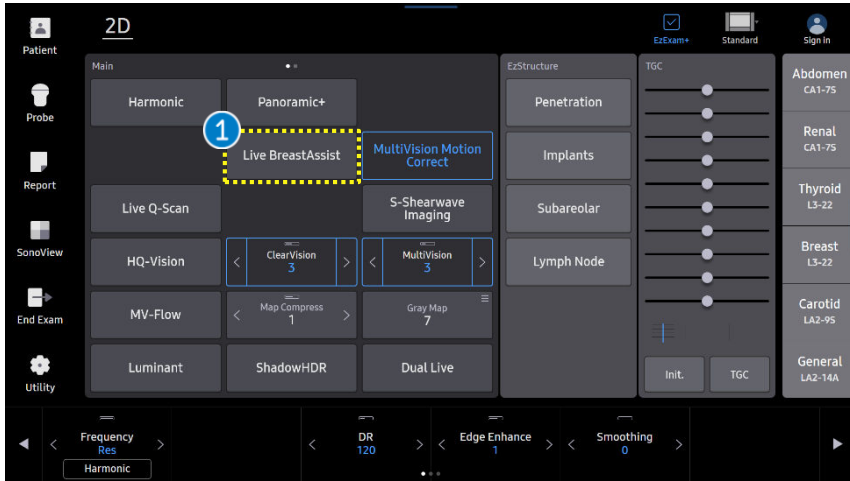
1 Probe

After pressing the [Probe] button, select a Linear probe (LA2-14A, LM2-18, LA2-9S).

2 Preset

Under Small Parts Application, select the [Breast] Preset.

2. Start to Live BreastAssist™



1 Start

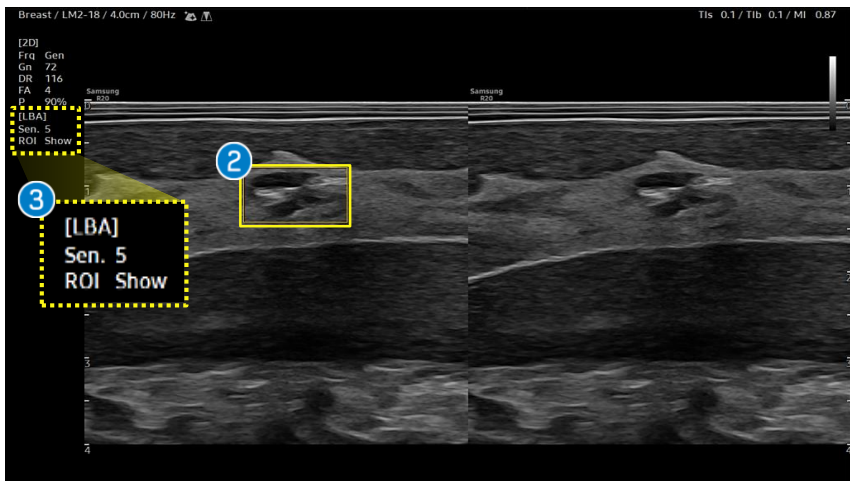
Select the [Live BreastAssist] button to start.

2 ROI Detection

While scanning, suspicious lesion will be indicated with an ROI box.

3 Display [LBA]

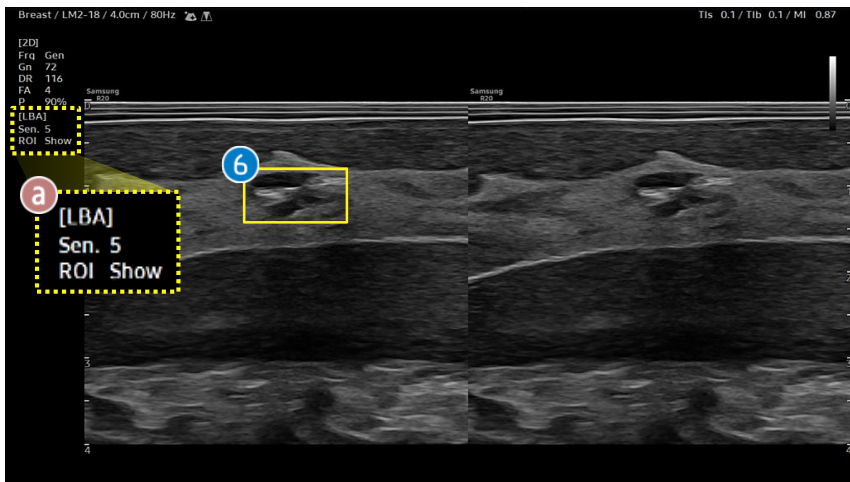
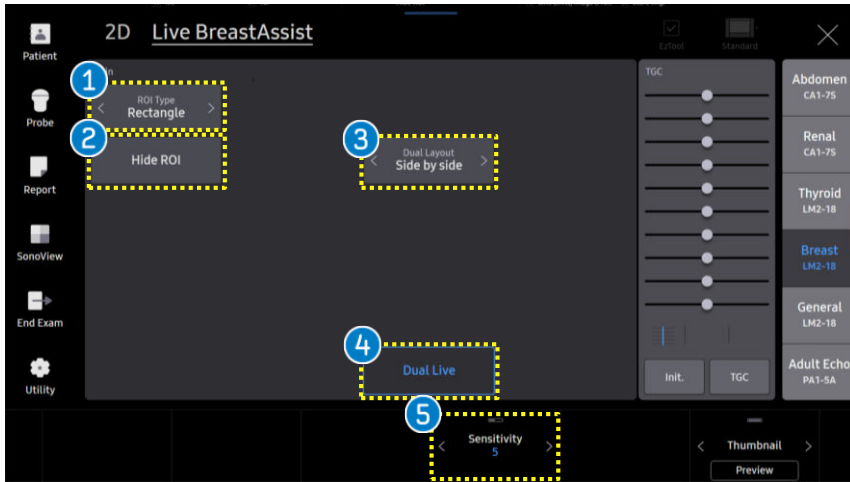
Live BreastAssist running status will be displayed on the monitor. Sensitivity Level, Hide ROI On/Off status are also displayed.



★Tips

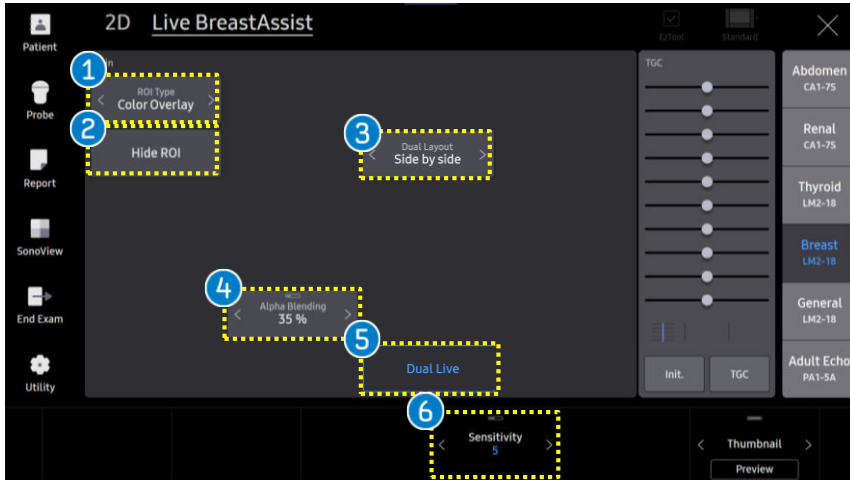
- Detection performance may be affected by the Gain, TGC settings. If the Gain is too low, the detection rate may decrease.
- DR(Dynamic Range) setting does not affect the detection performance.

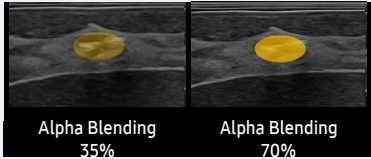
3. ROI Type(1) - Rectangle



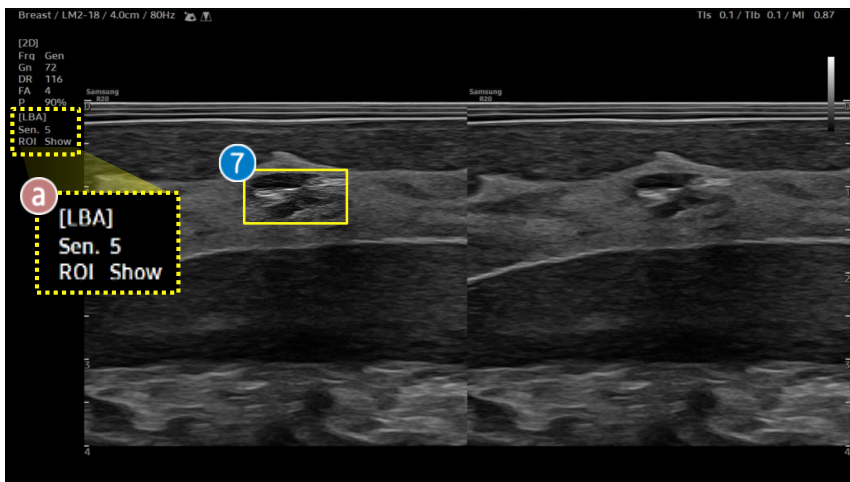
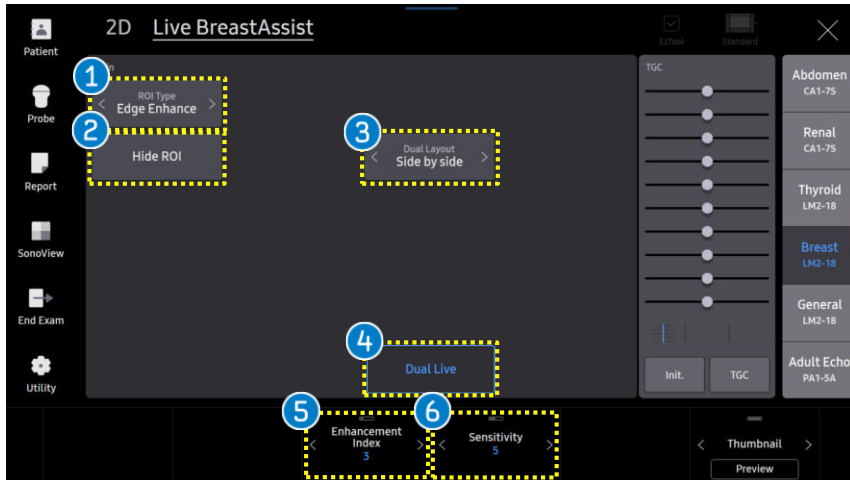
1	ROI Type	Select the ROI Type - Rectangle (Default).
2	Hide ROI	Choose to show or hide the ROI . <ul style="list-style-type: none"> On : 'ROI Hide' displayed on the left side of the image. Off : 'ROI Show' displayed on the left side of the image a .
3	Dual Layout	Set to display the ROI and the 2D images in Side by Side or Up/Down layout.
4	Dual Live	Simultaneous real-observation of ROI and Color Doppler image using Color Mode (Can be saved in User Preset) <ul style="list-style-type: none"> On : Dual layout with LLA activated screen + 2D. Off : Single layout of LLA activated screen.
5	Sensitivity	Adjust the sensitivity of lesion detection. (Level 1~10)
6	Display ROI	The selected ROI Type appears on the suspicious lesion.

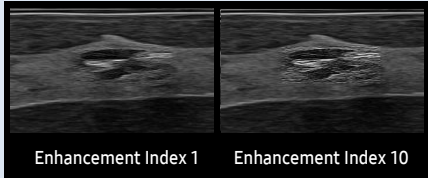
3. ROI Type(2) – Color Overlay



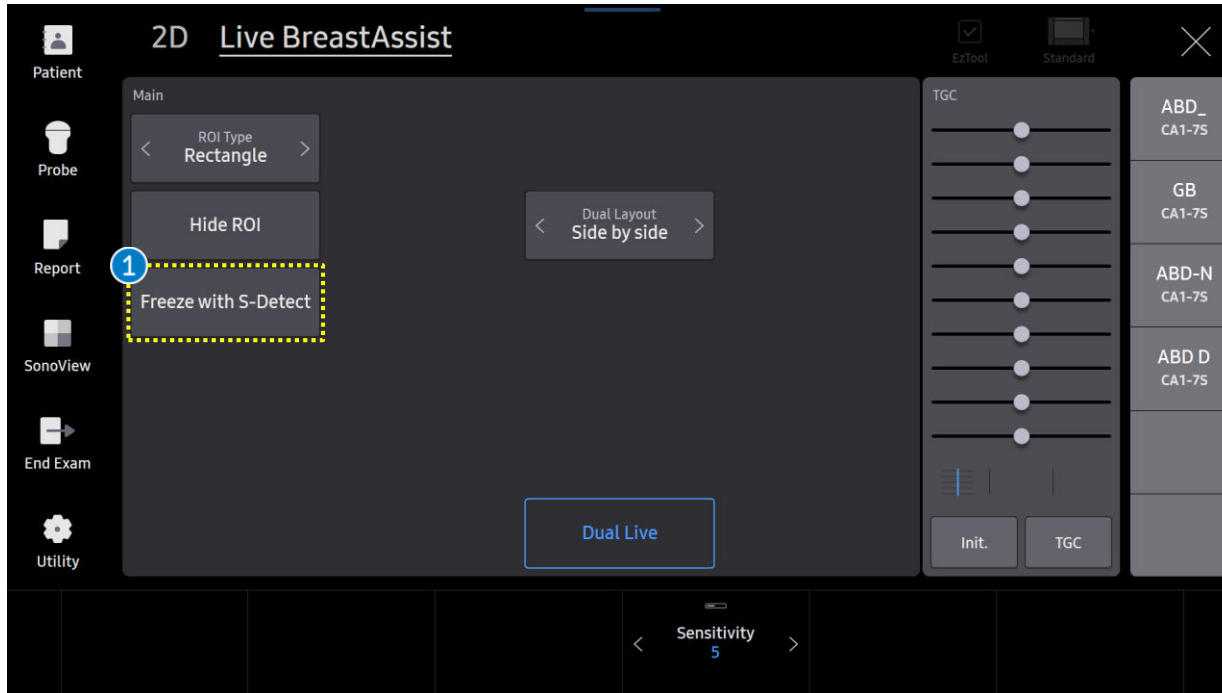
1	ROI Type	Select the ROI Type - Color Overlay
2	Hide ROI	Choose to show or hide the ROI . <ul style="list-style-type: none"> On : 'ROI Hide' displayed on the left side of the image. Off : 'ROI Show' displayed on the left side of the image a .
3	Dual Layout	Set to display the ROI and the 2D images in Side by Side or Up/Down layout.
4	Alpha Blending	Adjust the ratio of overlap between 2D and ROI's color image. 
5	Dual Live	Simultaneous real-observation of ROI and Color Doppler image using Color Mode (Can be saved in User Preset)
6	Sensitivity	Adjust the sensitivity of lesion detection. (Level 1~10)
7	Display ROI	The selected ROI Type appears on the suspicious lesion.

3. ROI Type(3) – Edge Enhance



1	ROI Type	Select the ROI Type - Edge Enhance
2	Hide ROI	Choose to show or hide the ROI . <ul style="list-style-type: none"> On : 'ROI Hide' displayed on the left side of the image. Off : 'ROI Show' displayed on the left side of the image a .
3	Dual Layout	Set to display the ROI and the 2D images in Side by Side or Up/Down layout.
4	Dual Live	Simultaneous real-observation of ROI and Color Doppler image using Color Mode (Can be saved in User Preset)
5	Enhancement Index	Adjust the Enhancement index (Index 1~10) <div style="display: flex; justify-content: space-around; align-items: center;">  </div>
6	Sensitivity	Adjust the sensitivity of lesion detection (Level 1~10)
7	Display ROI	The selected ROI Type appears on the suspicious lesion.

4. Touch Screen

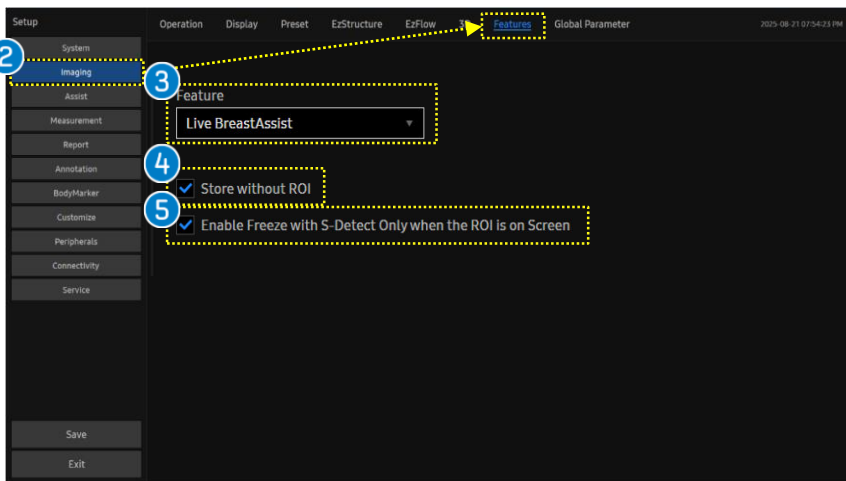
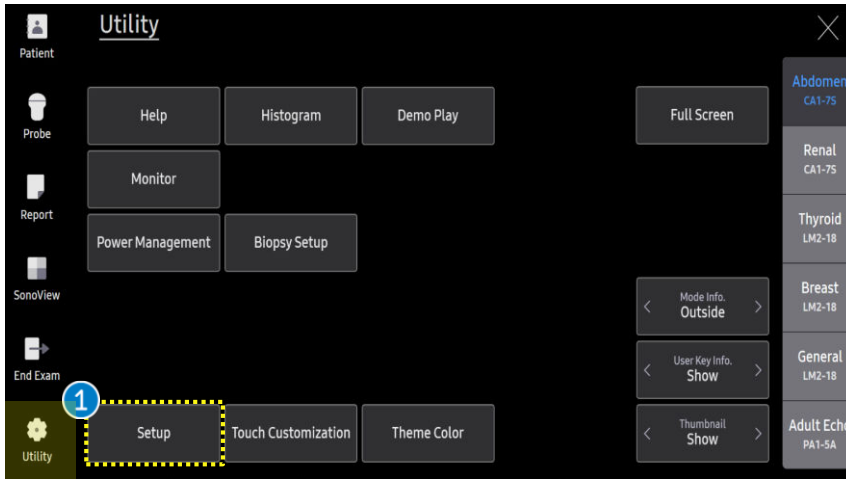


1 Freeze with S-Detect

Select this button in order to automatically activate [S-Detect for Breast] upon Freeze.

※ [Freeze with S-Detect] ON status can be saved in User presets.

5. Setup



1 Setup

Press the [Utility] button and enter [Setup].

2 Imaging

In [Imaging], enter the [Features] tab.

3 Feature

Select [Live BreastAssist].

4 Store without ROI

Choose to save the image with or without the ROI.

: Save without ROI

: Save with ROI

5 Enable Freeze with S-Detect Only when the ROI is on Screen

Set whether to automatically run [S-Detect] depending on whether ROI is displayed.

: Only when ROI is displayed, Freeze to run [S-Detect for Breast].

: Even when ROI is not displayed Freeze and automatically run. [S-Detect for Breast]

- The features, options may not be commercially available in some countries.
- Sales and shipments are effective only after the approval by the regulatory affairs. Please contact your local sales representative for further details.
- This Quick guide does not include all of the details of instruction, for more detail, please refer to R20 User Manual.
- Do not distribute this document to customers unless relevant regulatory and legal affairs officers approve such distribution.
- This User Quick Guide is based on R20 V1.01.
- Disclaimer: Some Images in this content were obtained from other system.

SAMSUNG MEDISON CO., LTD.

© 2025 Samsung Medison All Rights Reserved.

Samsung Medison reserves the right to modify the design, packaging, specifications, and features shown herein, without prior notice or obligation.