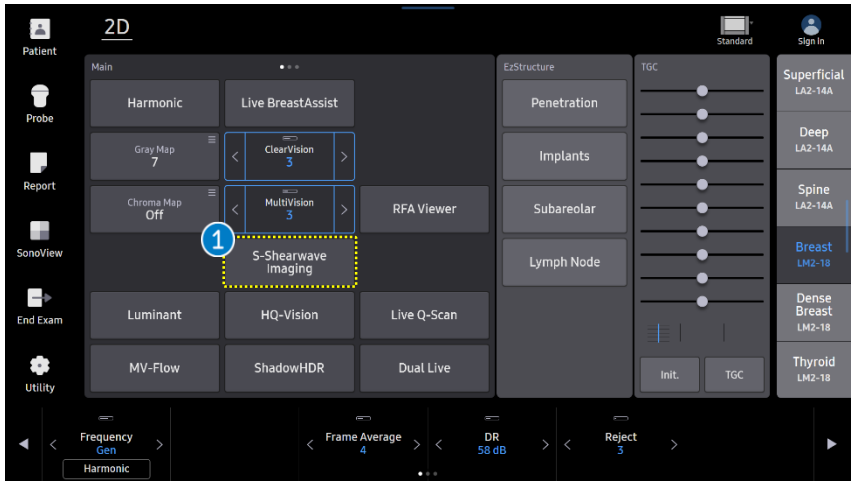


S-Shearwave Imaging™

1. Start S-Shearwave Imaging™

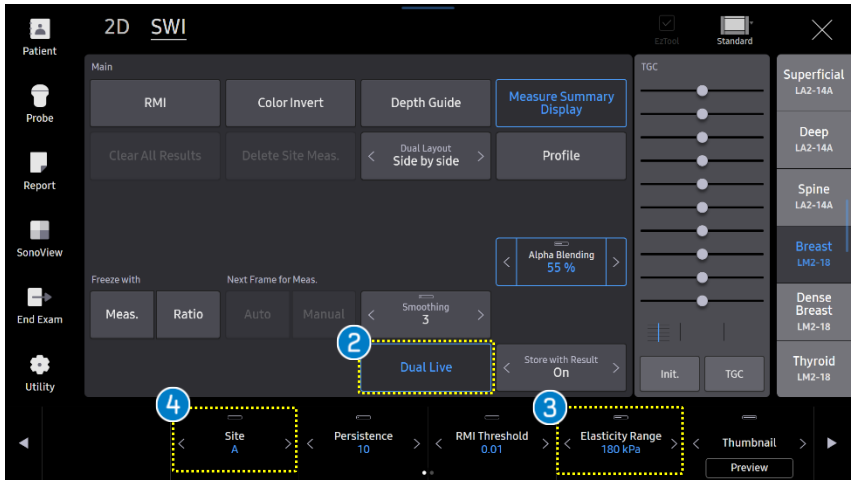
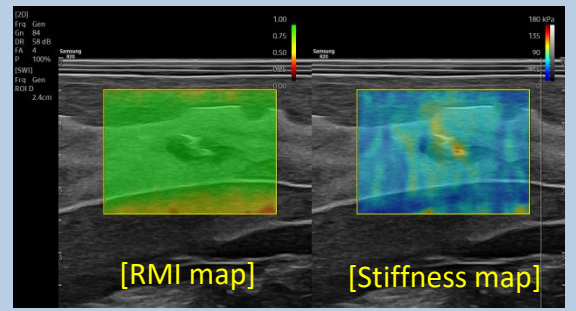


1 S-Shearwave Imaging

Tap the [S-Shearwave Imaging] button on the touch screen to start.

2 Dual Live

Displays both stiffness map and RMI map or 2D images in real time.



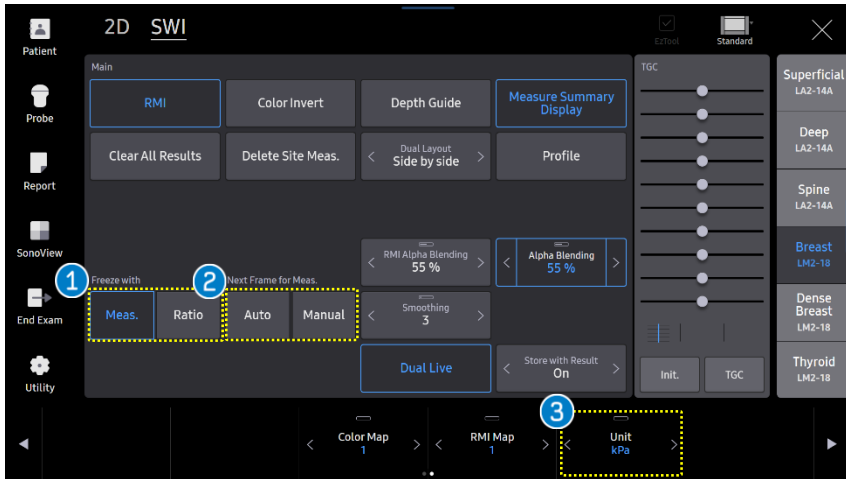
3 Elasticity Range

Changes the color stiffness map range. If you change the [Elasticity Range], color map within ROI and the color of elasticity bar also will be changed accordingly.

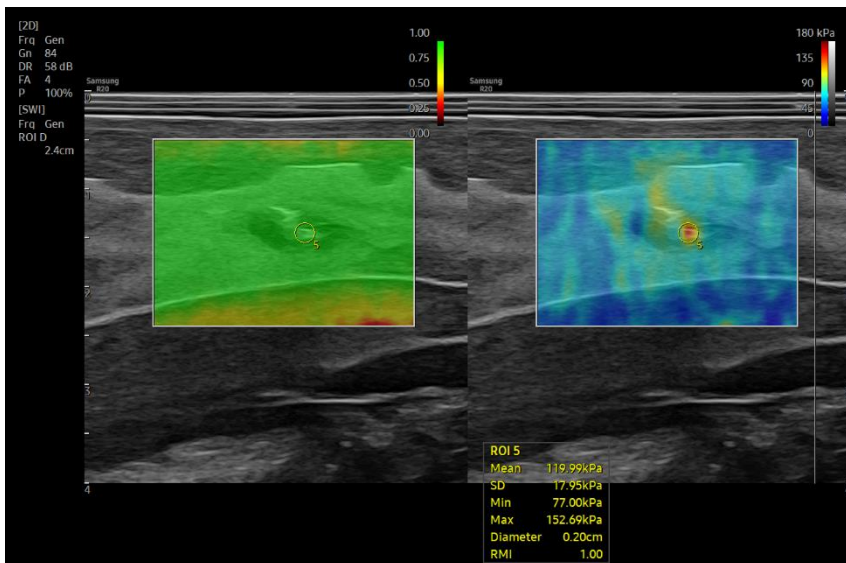
4 Site

Changes the ROI site.

2. Measure the Elasticity (1)



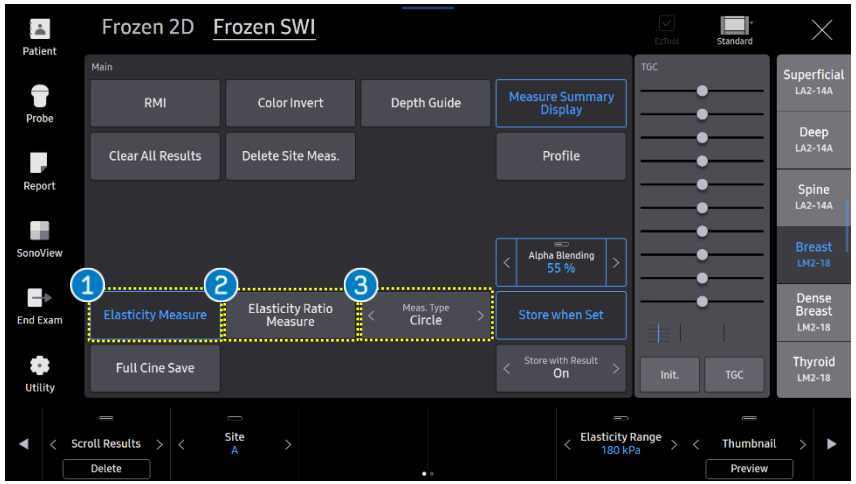
<p>1 Freeze with Meas.</p>	<p>Starts Elasticity Measurement/Elasticity Ratio Measurement when pressing Freeze.</p>
<p>2 Next Frame for Meas.</p>	<ul style="list-style-type: none"> Auto : Automatically moves on to the next frame after confirming the measurement by pressing the [Set] button. Manual : Moves to the next frame by pressing [Next Frame] after confirming the measurement.
<p>3 Unit</p>	<p>Changes the unit of the elasticity value.</p> <ul style="list-style-type: none"> The unit [kPa] is based on Young's modulus. The unit [m/s] is for Shearwave speed.



★ Tips

The Next Frame direction can be selected between Forwards or Backwards in the Setup page.
 *Setup (Imaging ► Features ► S-Shearwave Imaging ► Next Frame Direction ► Forwards / Backwards)

3. Measure the Elasticity (2)

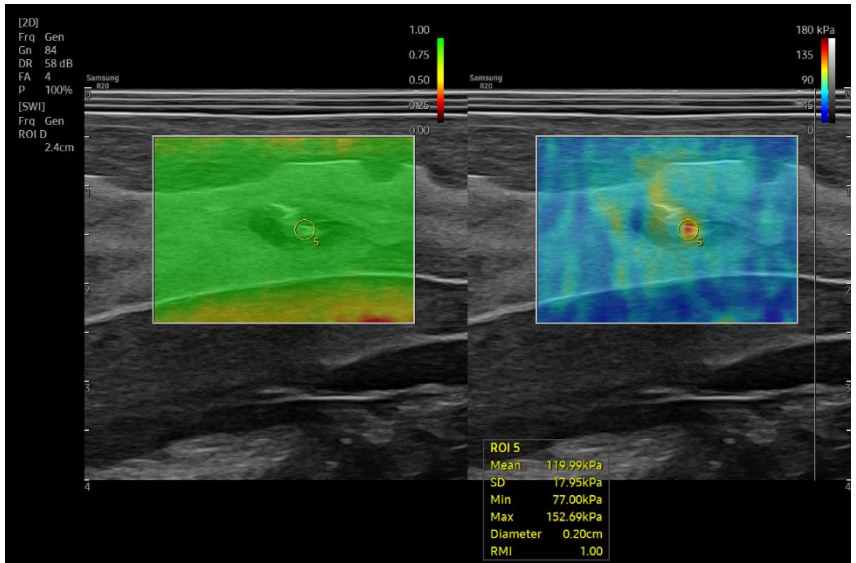


- 1 Elasticity Measure**

Tap the [Elasticity Measure] button. You can adjust the ROI size by using the change key. Press the [Set] button to save the value. When moving the trackball, it creates an additional ROI for next measurement.
- 2 Elasticity Ratio Measure**

Tap the [Elasticity Ratio Measure] button. Place the first quantification ROI on the area of interest within the elasticity ROI and press the [Set] button. Place the second quantification ROI on the reference within the elasticity ROI and press the [Set] button.
- 3 Meas. Type**

Select the measurement of ROI type between [Circle] or [Trace] type.

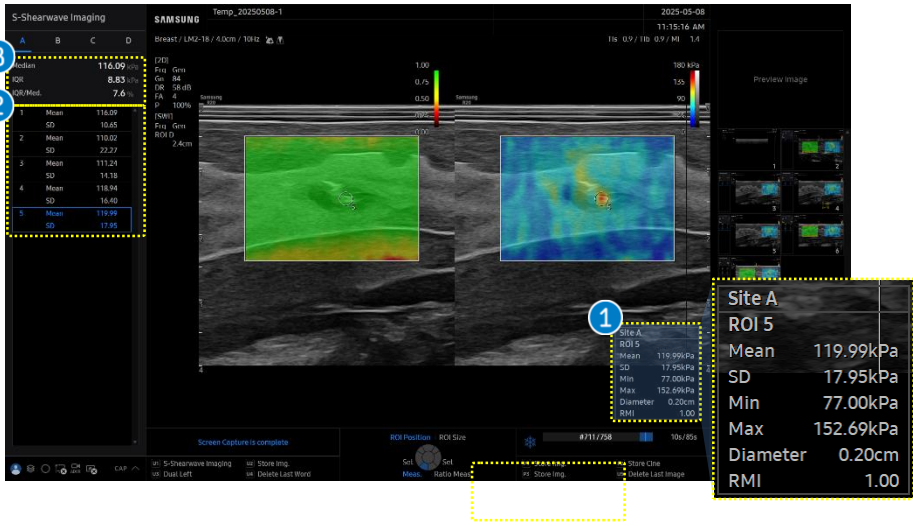


★ Tips

If Next Frame for Meas. is used, the location of the measurement ROI to the next frame can be set in the Setup page.

**Setup (Imaging ▶ Features ▶ S-Shearwave Imaging ▶ Next Measurement Cursor Display Position ▶ Reset Position / Keep Last Position)*

4. Results



The stiffness results within quantification ROI are displayed.

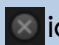
Mean	Mean elasticity value in ROI
SD	Standard deviation in ROI
Min	Minimum elasticity value in ROI
Max	Maximum elasticity value in ROI
Diameter	Diameter of ROI box
RMI	The reliability of the measured Shearwave Elasticity value.

1 Result box

2 Stiffness Result

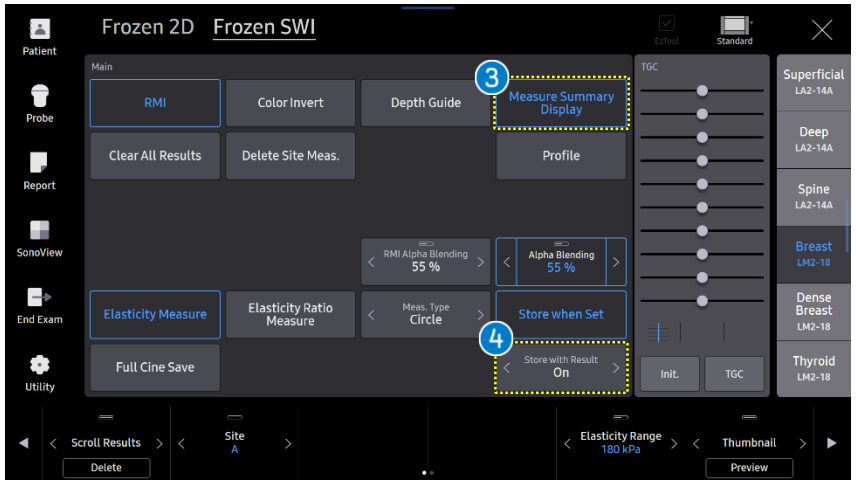
3 Measure Summary Display

4 Store with Result

Able to view the measured results. You can scroll the result using the [Scroll Results] button. If you want to delete the result individually by pressing the [Delete] button or selecting  icon.

Displays the measure summary (Median, Mean, IQR, IQR/Med value) on the result.

Saves the image including the measurement results area(left side).



- The features, options may not be commercially available in some countries.
- Sales and shipments are effective only after the approval by the regulatory affairs. Please contact your local sales representative for further details.
- This Quick guide does not include all of the details of instruction, fore more detail, please refer to R20 User Manual.
- Do not distribute this document to customers unless relevant regulatory and legal affairs officers approve such distribution.
- This User Quick Guide is based on R20 V1.01.
- Disclaimer: Some Images in this content were obtained from other system.

SAMSUNG MEDISON CO., LTD.

© 2025 Samsung Medison All Rights Reserved.

Samsung Medison reserves the right to modify the design, packaging, specifications, and features shown herein, without prior notice or obligation.