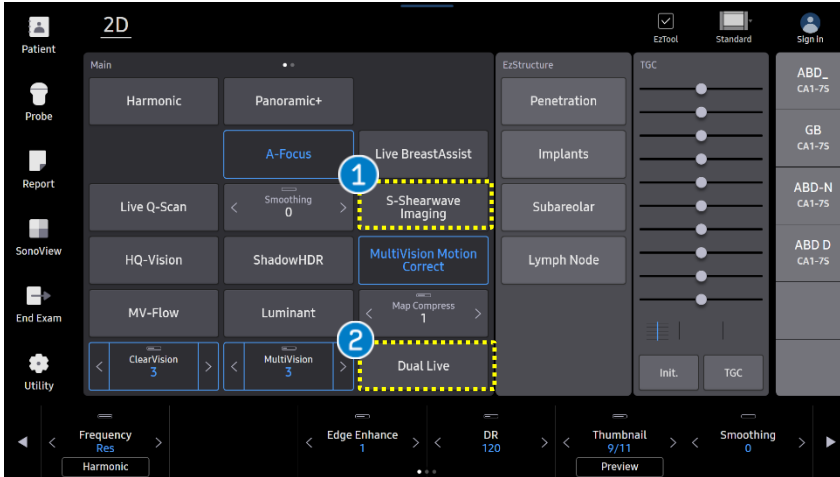


S-Shearwave Imaging™ for MSK

1. Start S-Shearwave Imaging™

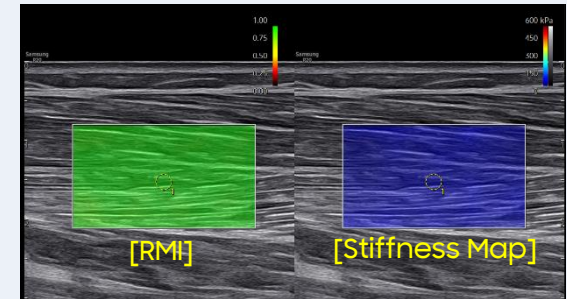


1 S-Shearwave Imaging

Tap the [S-Shearwave Imaging] on the touch screen to start.

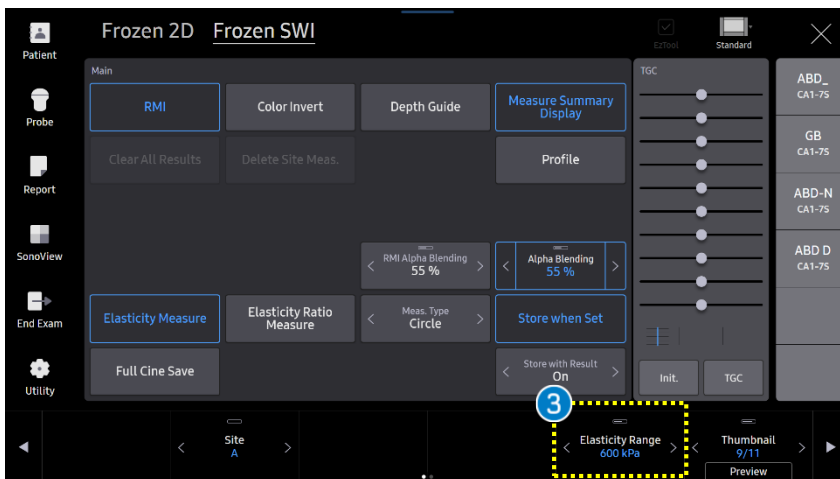
2 Dual Live

It displays both stiffness map and RMI map or 2D images in real time.

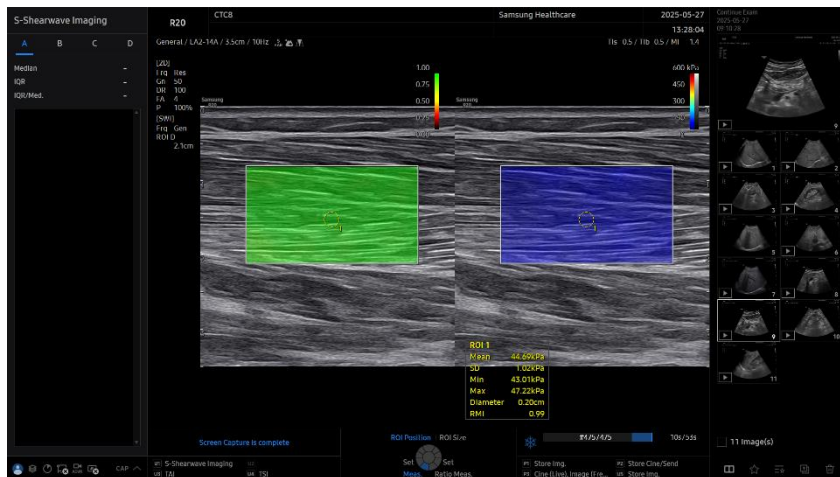
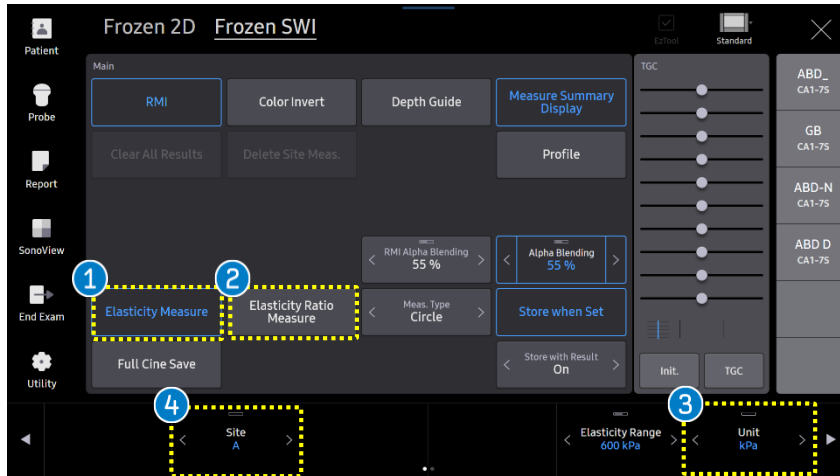


3 Elasticity Range

It is to change the color stiffness map range.
If you change the [Elasticity Range], color map within ROI and the color of elasticity bar also will be changed accordingly.



2. Measure the Elasticity



[Elasticity Measure]

1 Elasticity Measure

Tap the [Elasticity Measure].

- You can adjust ROI size using [Change] key.
- Press the [Set] button to save the value.
- When moving the trackball, it copies additional ROI for next measurement.

2 Elasticity Ratio Measure

Tap the [Elasticity Ratio Measure].

- Place the first quantification ROI on the area of interest within the elasticity ROI and press the [Set] button.
- Place the second quantification ROI on the reference within the elasticity ROI and press the [Set] button.

3 Unit

It is to change the unit of an elasticity value.

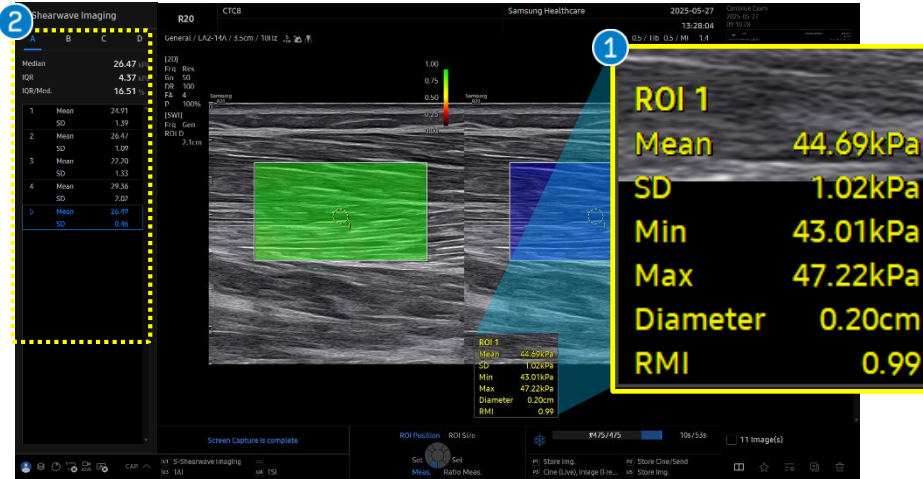
- The unit [kPa] is based on Young's modulus.
- The unit [m/s] is for Shearwave speed.

4 Site

It is to change the ROI site.

S-Shearwave Imaging™
for MSK

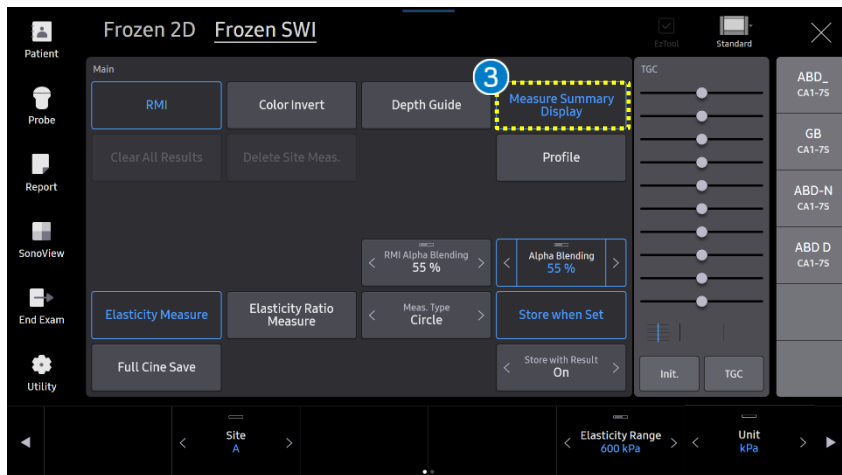
3. The Results



The stiffness results within quantification ROI are displayed.

1 Result box

Mean	Mean elasticity value in ROI
SD	Standard deviation in ROI
Min	Minimum elasticity value in ROI
Max	Maximum elasticity value in ROI
Diameter	Diameter of ROI box



2 Stiffness Result

- Available to view the measured results.
- It can scroll the result using the [Scroll] button. If you want to delete the result individually by pressing the [Delete] button or selecting icon.

3 Measure Summary Display

Available to select the measure summary (Median, Mean, IQR, IQR/Med value) to be displayed on the result or not.

- The features, options may not be commercially available in some countries.
- Sales and shipments are effective only after the approval by the regulatory affairs. Please contact your local sales representative for further details.
- This Quick guide does not include all of the details of instruction, for more detail, please refer to R20 User Manual.
- Do not distribute this document to customers unless relevant regulatory and legal affairs officers approve such distribution.
- This User Quick Guide is based on R20 V1.01.
- Disclaimer: Some Images in this content were obtained from other system.

SAMSUNG MEDISON CO., LTD.

© 2025 Samsung Medison All Rights Reserved.

Samsung Medison reserves the right to modify the design, packaging, specifications, and features shown herein, without prior notice or obligation.