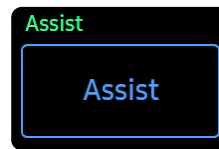


FAQ

HeartAssist™ for Adult Echo **Why Can't I See the Assist Button** **During Adult Cardiac Scans**

[FAQ – HeartAssist™ for Adult Echo]

- Question
I'm scanning an adult heart and entered the measurement menu, but **Assist** button isn't visible. What should I check?

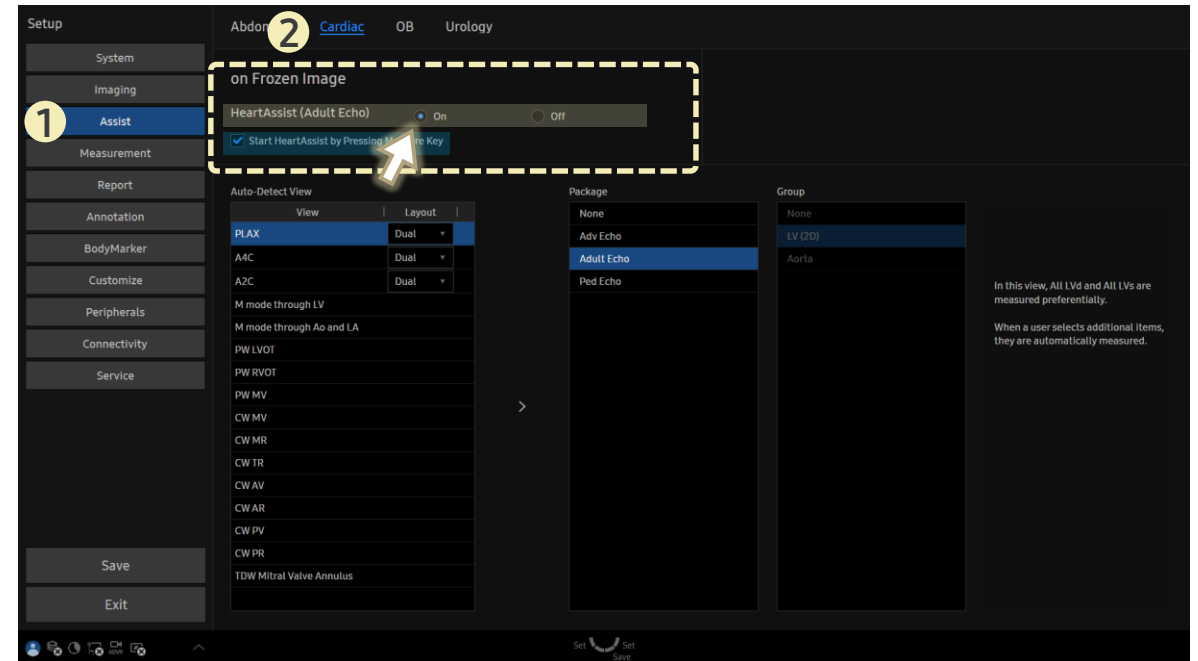


- Answer

■ Path: Setup > Assist > Cardiac

Make sure **HeartAssist(Adult Echo)** is set to **On**.

- ▶ If this setting is **Off**, the **Assist** button will not appear during adult cardiac measurements.



- ☑ When **Start HeartAssist by Pressing Measure Key** is enabled, pressing the **Measure** button automatically starts **HeartAssist** and performs auto measurement from the image.