

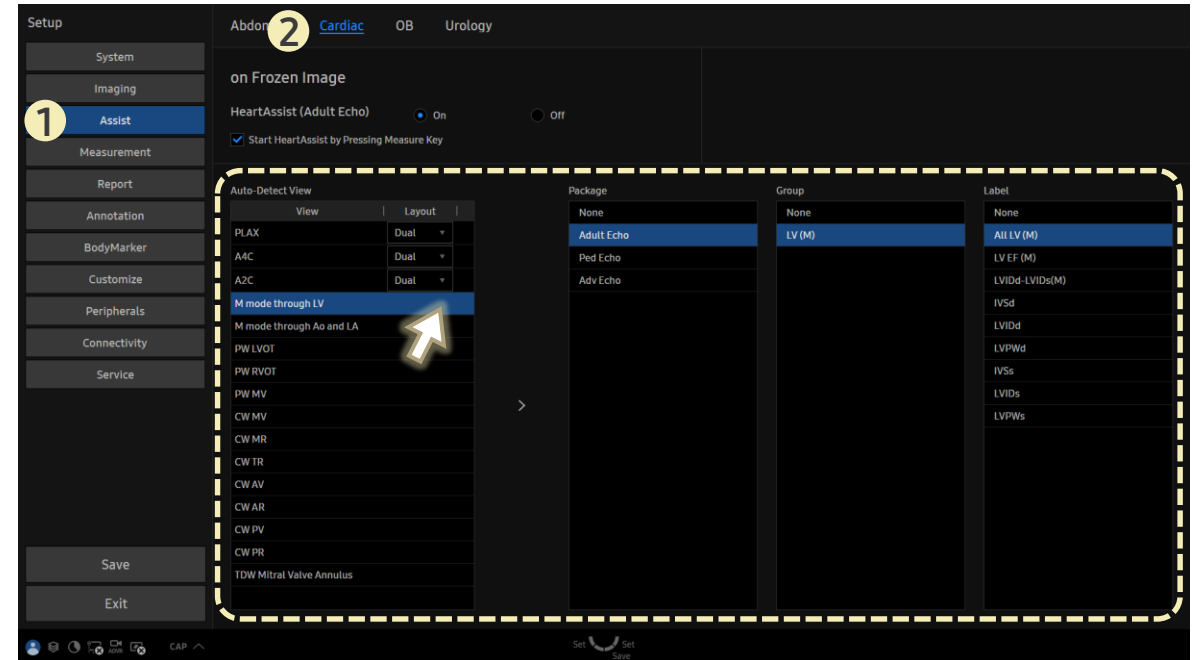
# FAQ

## **HeartAssist™ for Adult Echo**

### **How to Set the Measurement Menu Based on Auto-Detected Cardiac Views**

## [FAQ – HeartAssist™ for Adult Echo]

- Question  
In **HeartAssist**, can I predefine the measurement package for the respective automatically recognized cardiac view?
- Answer
  - Path: Setup > Assist > Cardiac
  - 1. In the **Auto-Detect View** list, select the desired cardiac view (e.g., PLAX, A4C, etc.).
  - 2. Assign the corresponding **Package**, **Group**, and **Label** on the right side.



- When the selected view is automatically recognized by HeartAssist, the associated measurement menu will launch accordingly.