

FAQ
How to Activate
HeartAssist™ for Fetal Echo

[FAQ – HeartAssist™ (Fetal Echo)]

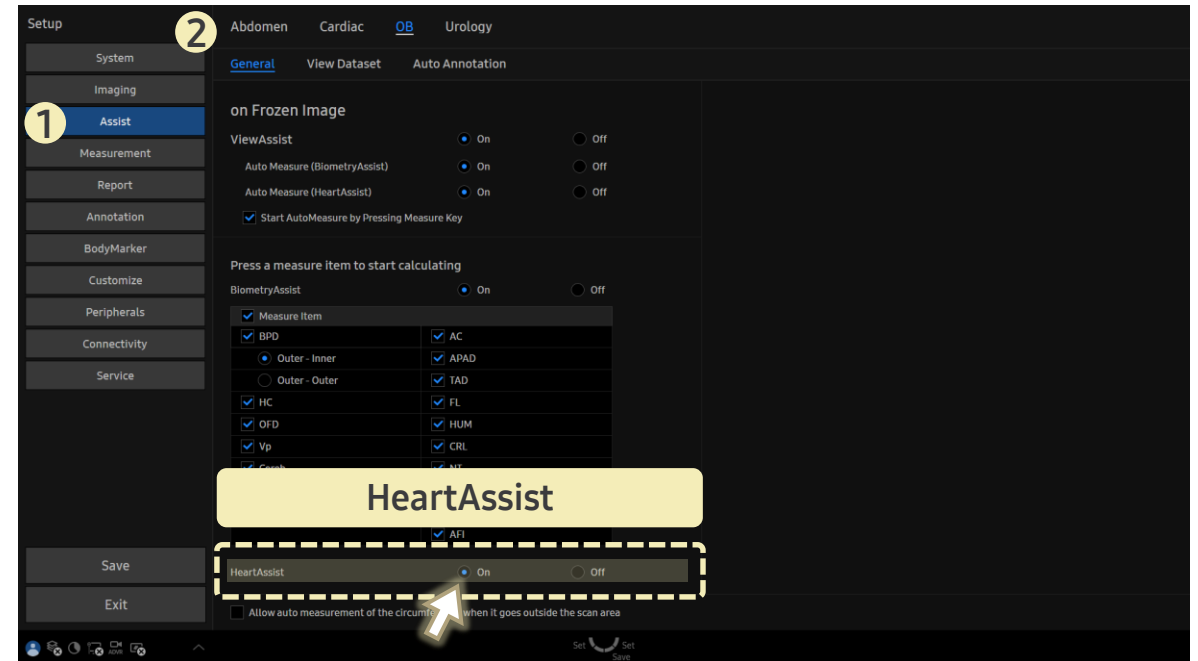
- Question
Assist button does not appear on the touchscreen in **Measurement** mode. How can I use **HeartAssist™**?

- Answer

■ Path: Setup > Assist > OB> General

Activate **HeartAssist™** by clicking **On**.

- Even when **On**, you can manually measure by deselecting **Assist** button on the touchscreen in measurement mode.
- When **Off**, **Assist** button will not appear on the touchscreen in measurement mode.



- Settings related to **Auto Measure** function, which automatically recognizes acquired views and performs measurements without the user selecting measurement items manually, can be configured in **Setup > Assist > View Dataset**.