

## FAQ

# How to Adjust the Image Width for Linear Transducers (Single Layout)

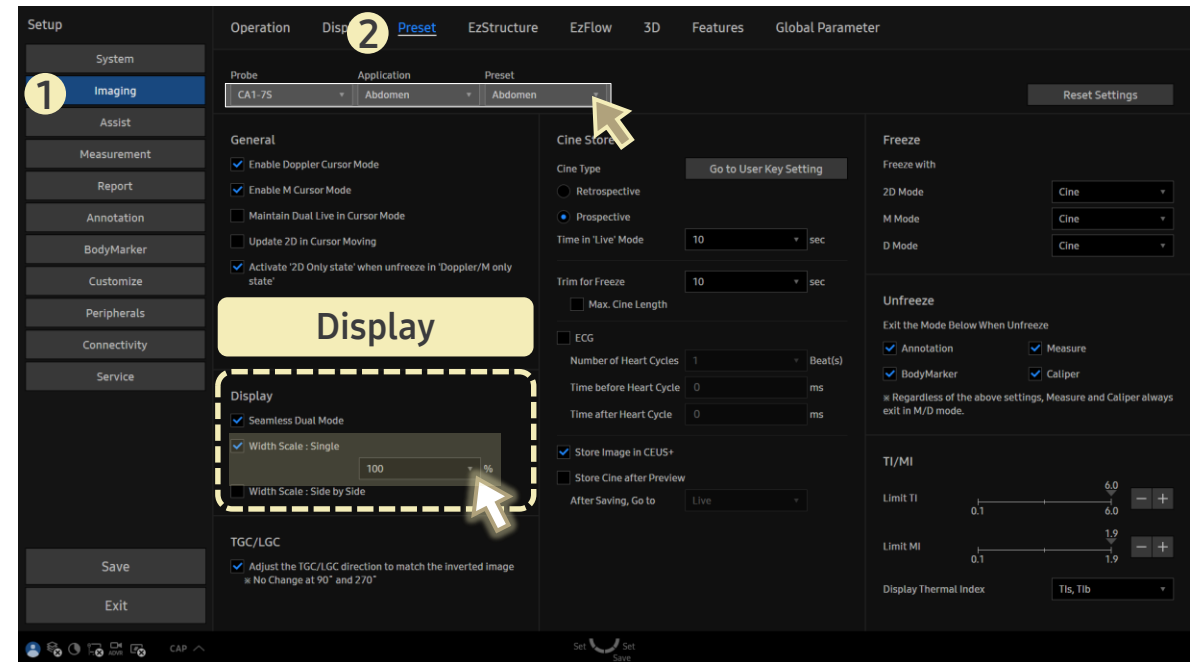
## [FAQ – Image Width Scale (Single)]

- Question  
How can I change the image width when using a linear transducer?

- Answer

■ Path: Setup > Imaging > Preset

1. Select the desired **Probe**, **Application**, and **Preset**.
2. In **Width Scale : Single**, select a percentage from the dropdown (50% to 100%).



This adjusts the image width when using a linear transducer.

- Even when the depth becomes shallow, the selected width can be maintained.