

FAQ

How to Automatically Close TGC/LGC Window

SAMSUNG R20

[FAQ – Close TGC/LGC]

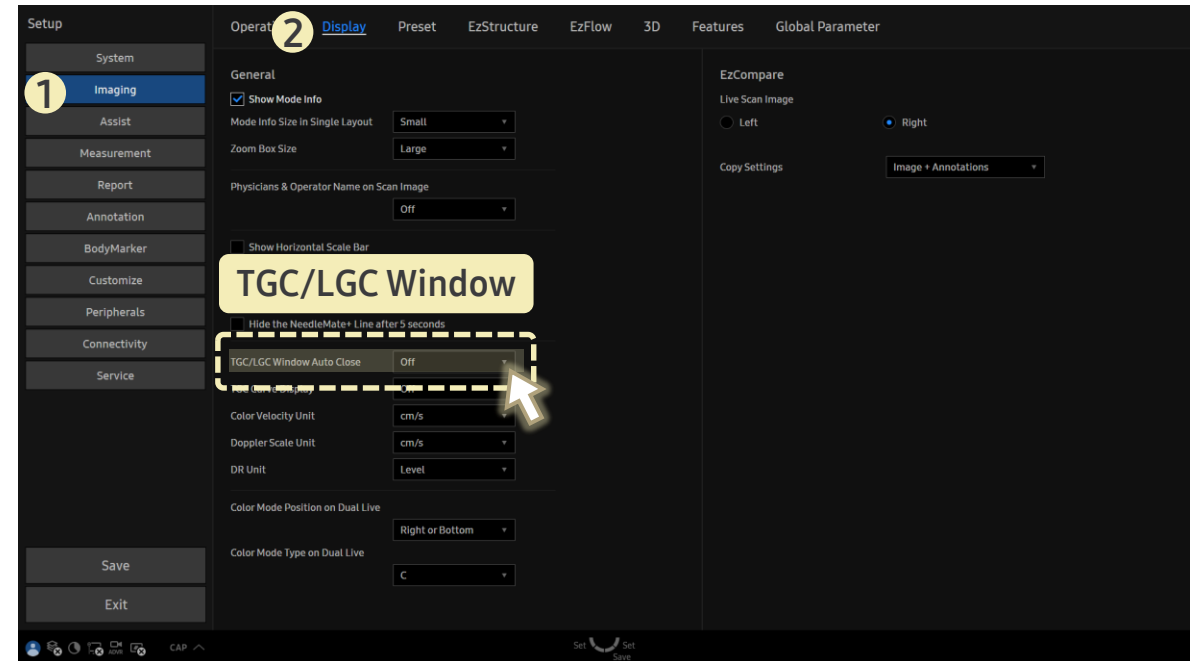
- Question
When I open **TGC** window on the touchscreen, can it close automatically after a few seconds?

- Answer

■ Path: Setup > Imaging > Display

In **TGC/LGC Window Auto Close**, choose a timeout value from the dropdown.

- ▶ This setting applies when you tap **TGC** button to enter full-screen **TGC** mode, not when adjusting the floating **TGC** bar.



- To access **LGC**, enter the TGC screen and switch to the **LGC** tab within that window.