

FAQ

How to Assign CINE Function to Trackball in Measurement Mode

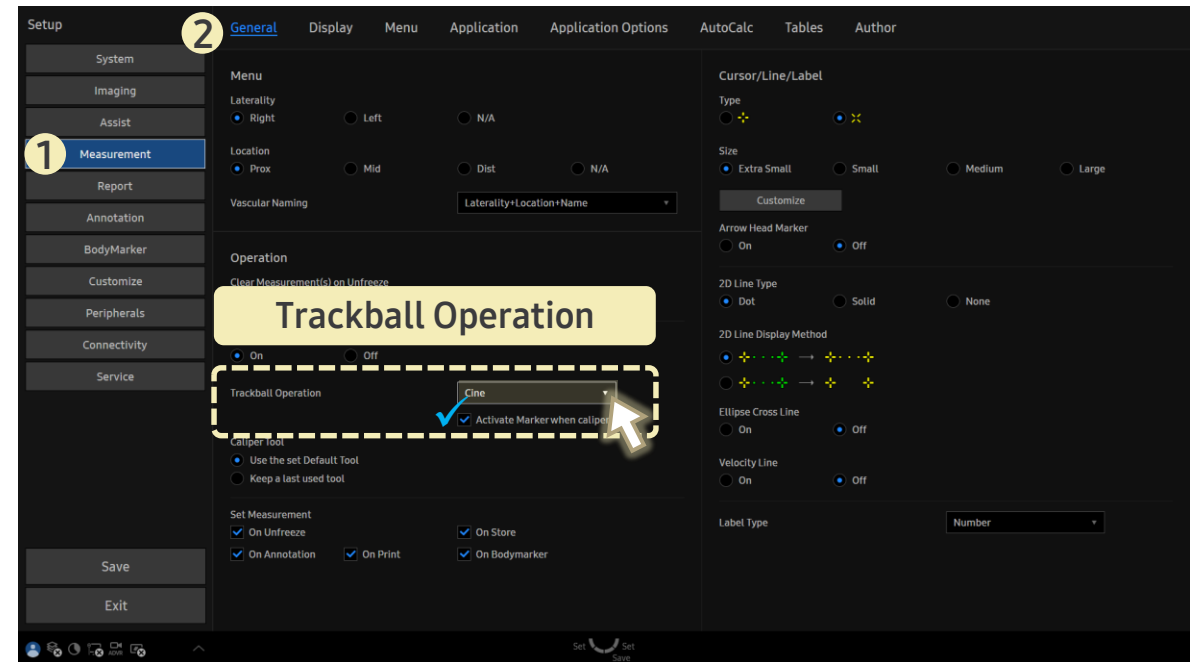
[FAQ – Trackball in Measurement]

- Question
Is it possible to move the cine frame using **Trackball** instead of directly displaying the measurement cursor(Marker) in **Measurement** mode?

- Answer

■ Path: Setup > Measurement > General

Change the **Trackball Operation** to **Cine**.



- **Activate Marker when caliper start**
When checked, the trackball does not operate as **Cine** in **Caliper** mode. Instead, the measurement cursor appears immediately, and the marker moves when the trackball is used.