

FAQ

How to Change the Scale Unit in PW/CW Mode

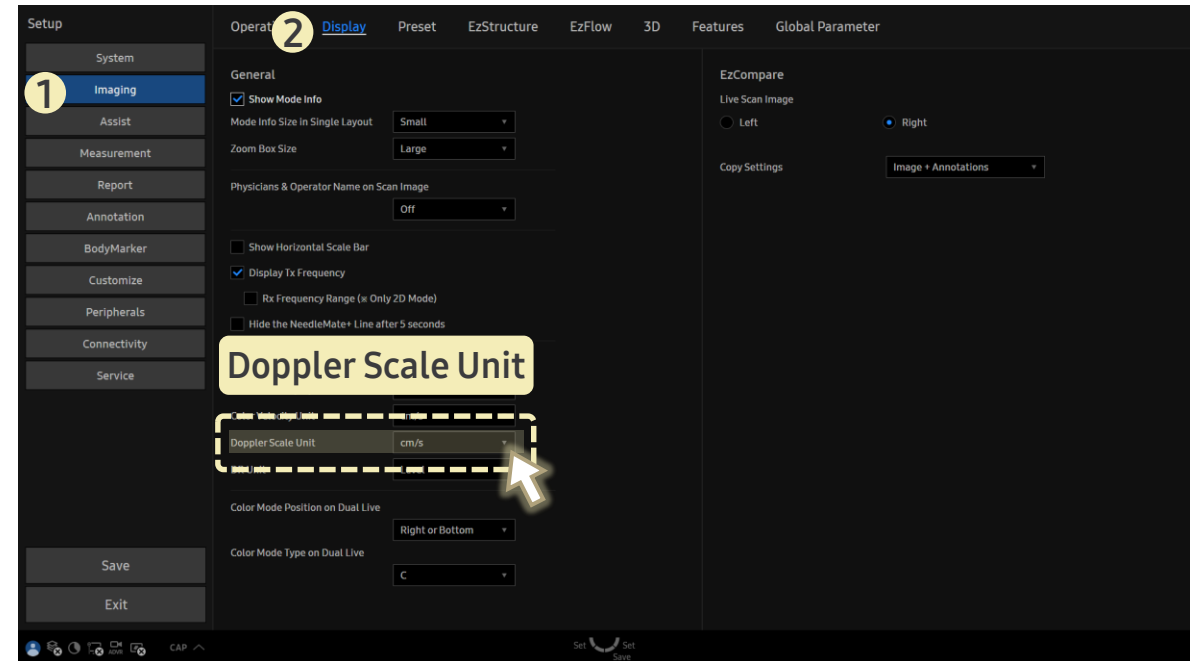
[FAQ – Scale Unit in PW/CW Mode]

- Question
When I enter PW or CW mode, how can I change the unit displayed next to the spectral waveform?

- Answer

■ Path: Setup > Imaging > Display

1. Go to **Doppler Scale Unit**.
2. Select a unit from the dropdown:
cm/s, m/s, or kHz.



- The scale unit displayed on the right-side axis of the spectral waveform in **PW** and **CW modes** will reflect your selection.