

FAQ

How to Change the Size of Mode Info in Single Layout

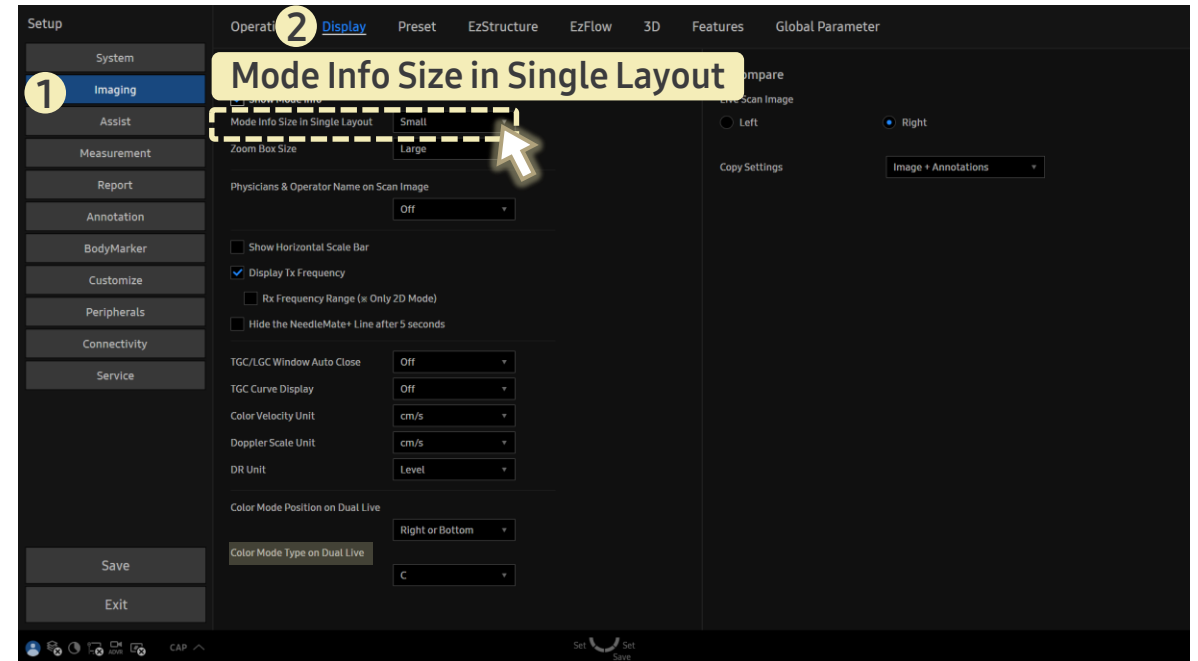
[FAQ – Size of Mode Info]

- Question
How do I change the **size of mode info.** in **single layout**?

- Answer

■ Path: Setup > Imaging > Display

Select the size in **Mode Info Size in Single Layout**.



- ☑ When the size is changed to **Large**, make sure the **Mode Info.** is set to **Inside**.
- **Mode Info.** is indicating whether the information will be placed inside or outside the image.
This can be found at **Utility** page under **Mode Info.** on the right side of the screen.