

FAQ

How to Configure EDD Calculation Method

SAMSUNG R20

[FAQ – EDD]

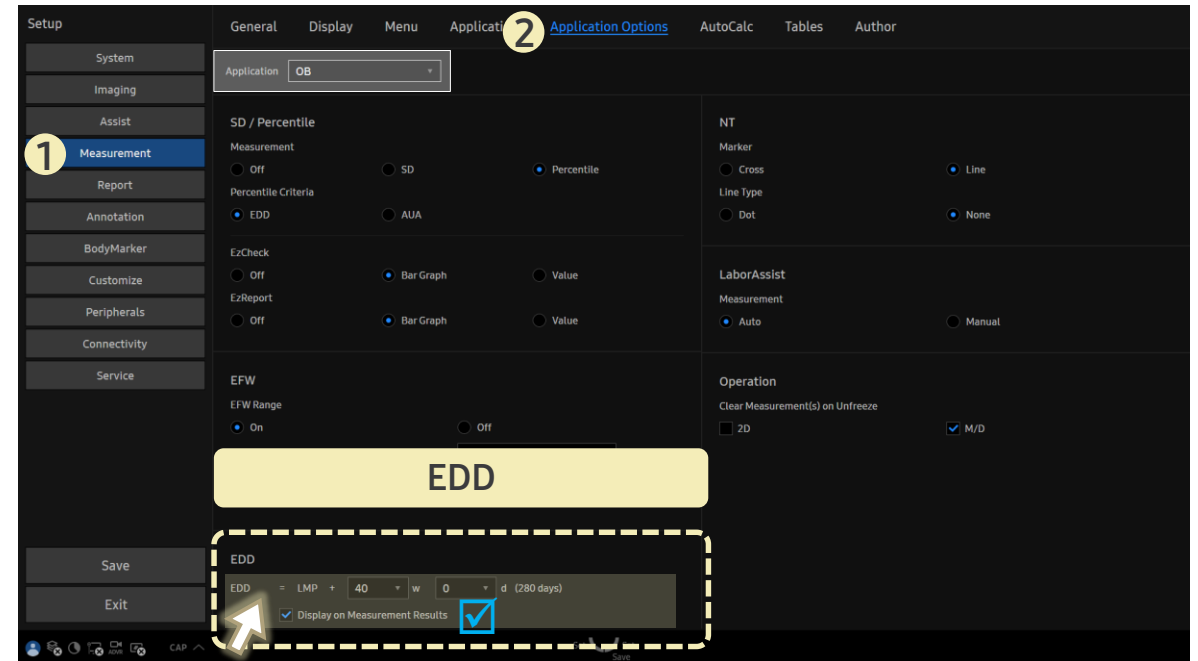
- Question
Where can I set the method for calculating **EDD**(Expected Date of Delivery)?

- Answer

■ Path: Setup > Measurement > Application Options

Originally,
EDD is set as 280 days (40 weeks) from the first day of **LMP**(Last Menstrual Period).

You can select a range between 35 to 45 weeks and 0 to 6 days from the dropdown list.



- The setting cannot be changed during an examination. Modify it after selecting **End Exam**.
- When **Display on Measurement Result** is checked, **EDD** will be displayed alongside each measurement result.