

FAQ

How to Configure Actions After Pressing the Freeze Button

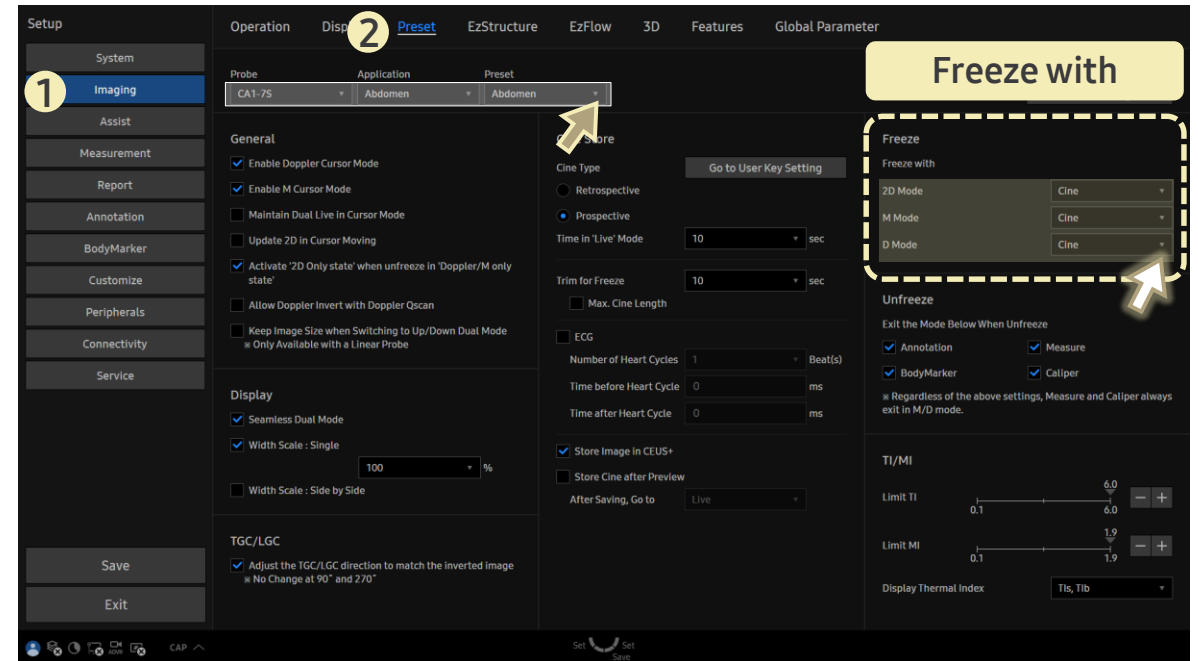
[FAQ – Touchscreen After Freeze]

- Question
Can I assign what action happens right after I press the **Freeze** button?

- Answer

■ Path: Setup > Imaging > Preset

1. Make sure the correct **Probe**, **Application**, and **Preset** are selected before adjusting the setting.
2. In **Freeze with**, choose an action from the dropdown for each mode (2D / M / D).



- Available options: None, Cine, Annotation, BodyMarker, Arrow, Measurement, or Caliper — this defines the action to execute immediately after pressing **Freeze**.