

FAQ

How to Change the Velocity Unit in Color Mode

SAMSUNG R20

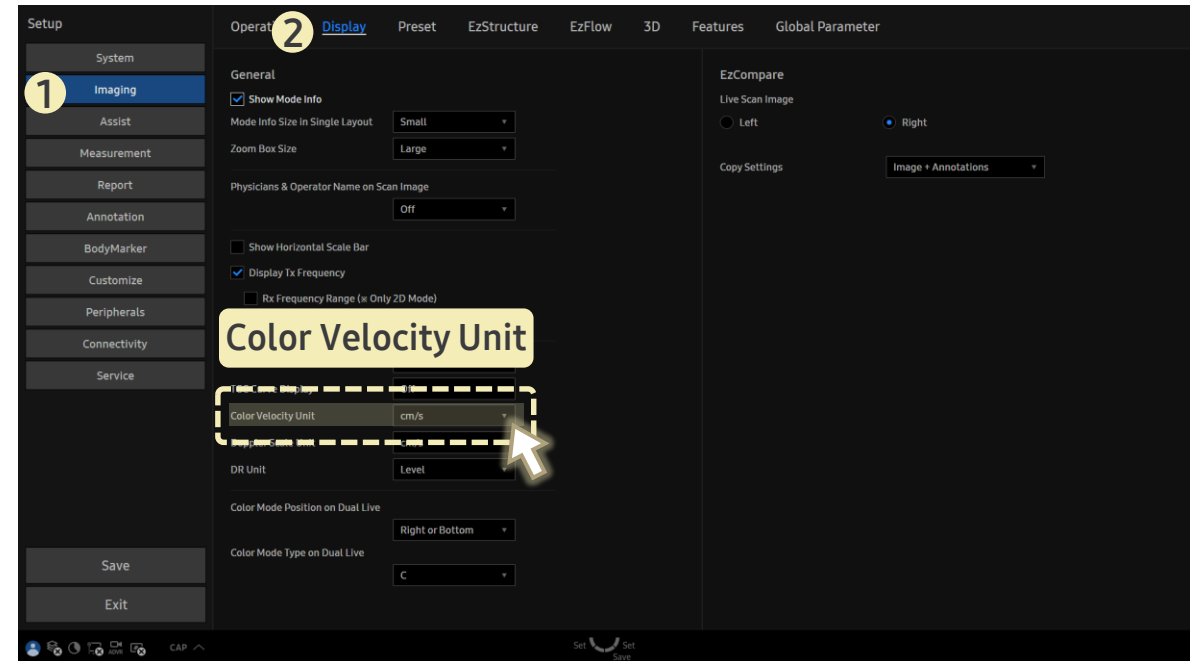
[FAQ – Velocity Unit in Color Mode]

- Question
When I enter Color mode, how can I change the velocity unit shown on the color bar?

- Answer

■ Path: Setup > Imaging > Display

1. Go to **Color Velocity Unit**.
2. Select your preferred unit from the dropdown:
cm/s or m/s.



- The velocity unit displayed on the right-side color bar in **Color mode** will reflect your selection.