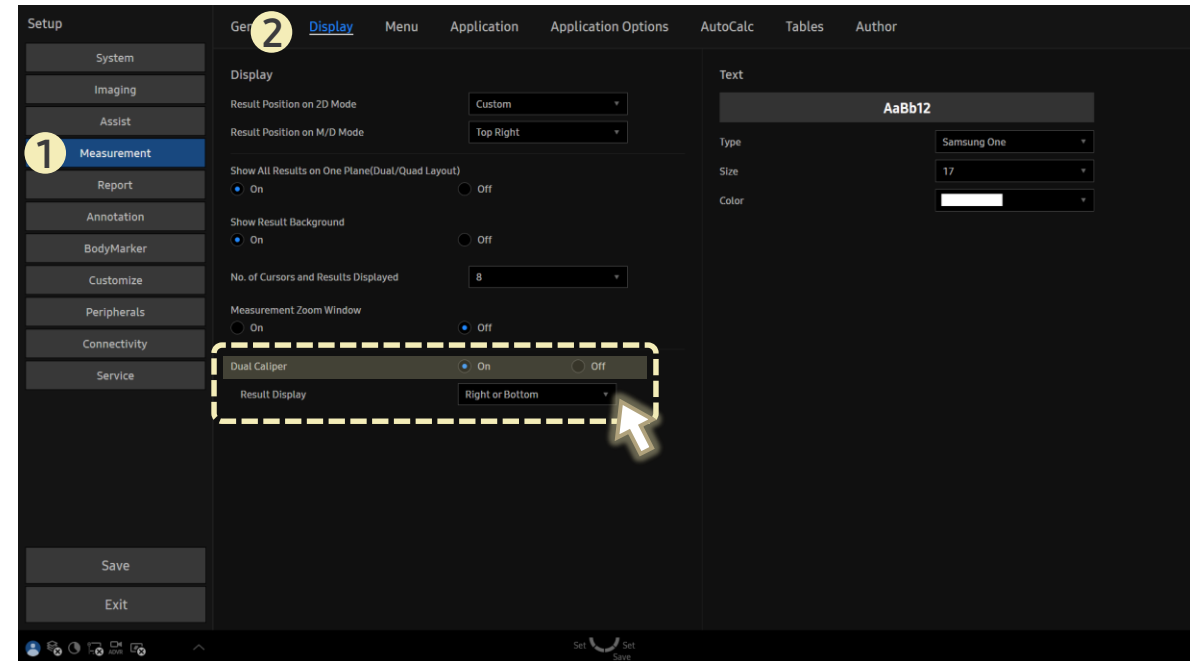


FAQ

How to Display Measurement Cursor and Results in Dual Live Mode

[FAQ – Measurement in Dual Live]

- Question
In **Dual Live**, can I have the measurement cursor and results appear simultaneously on both sides of the screen?
- Answer
 - Path: Setup > Measurement > Display
 - 1. Turn **Dual Caliper On** to show the cursor and results on both sides.
 - 2. Select where results will appear: Both, Left/Top, or Right/Bottom.
 - ▶ If **Dual Caliper** is **Off**, the cursor and results appear only on the side where the measurement is set.



- This function works only in real-time dual imaging modes, such as **Dual Live**, where both sides are displayed simultaneously.
- It does not apply to **Dual mode** where the left and right images are acquired separately, such as when reviewing captured images side-by-side.