

FAQ
How to Enable
Voice Command and Feedback

SAMSUNG R20

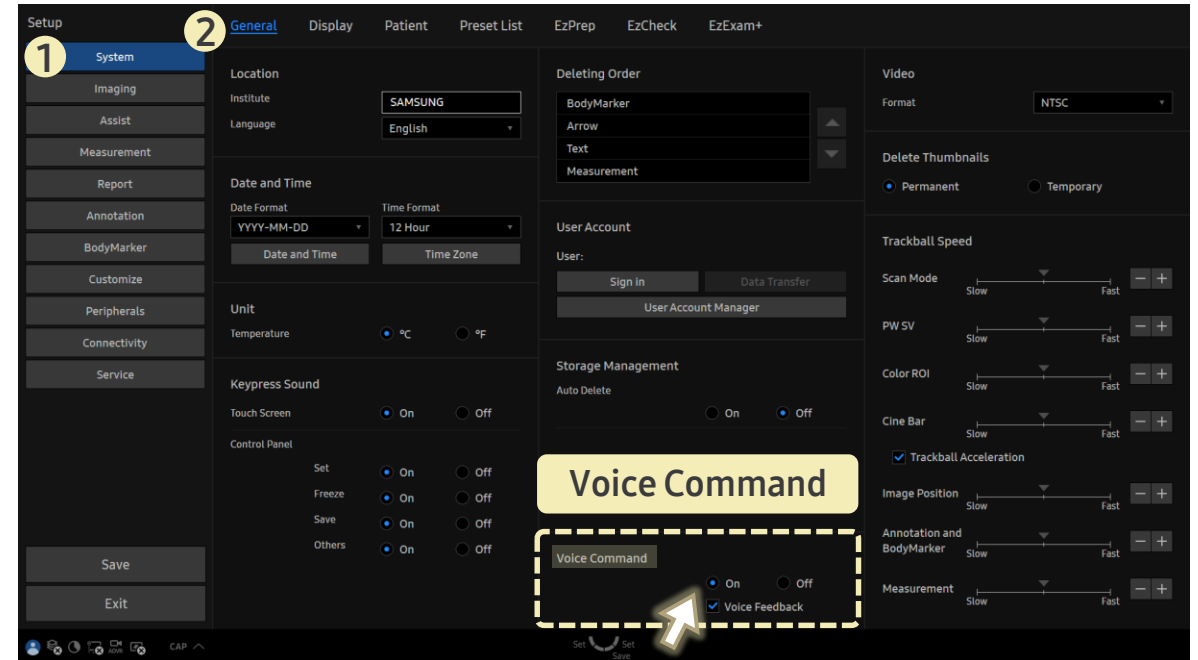
[FAQ – Voice Command]

- Question
How can I turn **Voice Command** on or off, and what do I need to use it?

- Answer

■ Path: Setup > System > General

1. Set **Voice Command** to **On** or **Off**.
2. When **On**, the checkbox for **Voice Feedback** becomes available.
 - ▶ Check this option to hear spoken confirmation of your commands.



- To use **Voice Command**, the microphone must be turned on:
Setup > Peripherals > Mic > On