

FAQ

How to Keep the 2D Image Size When Switching to Up/Down Dual Mode

SAMSUNG R20

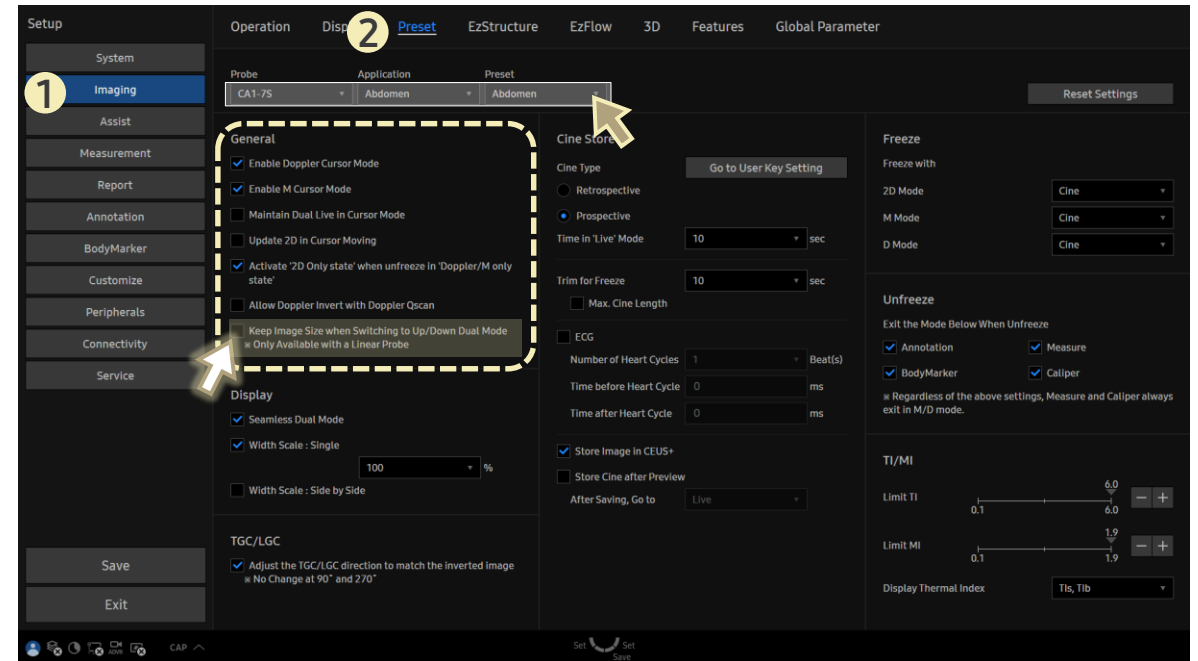
[FAQ – Dual Mode(Up/Down)]

- Question
When switching to **Dual Mode (Up/Down)**, can I keep the same **2D Image size** setting?

- Answer

■ Path: Setup > Imaging > Preset

1. Select the desired **Probe**, **Application**, and **Preset**.
2. Check the box for **Keep Image Size when Switching to Up/Down Dual Mode**. (* Applies only to linear transducers.)
 - ▶ This will maintain the current **2D Image Size (%)** as set in Single mode. (The image may be cropped at the bottom to fit the dual layout.)



- If unchecked, the system adjusts the image to match the original single layout format.
 - The entire image remains visible without cropping, but is scaled down to fit within the dual display area.