

## FAQ

# How to Hide the Yellow Dashed Line in NeedleMate+™

# SAMSUNG R20

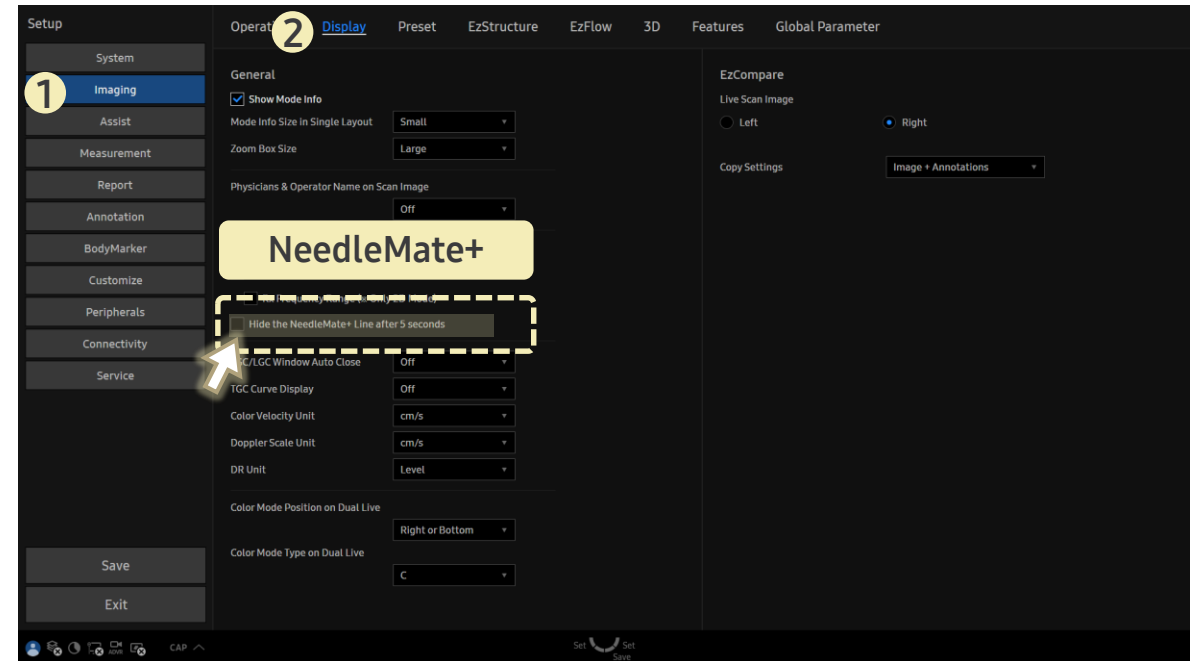
## [FAQ – NeedleMate+™]

- Question  
When I activate **NeedleMate+**, a yellow dashed line appears. Can I remove or hide it?

- Answer

■ Path: Setup > Imaging > Display

Check the box for **Hide the NeedleMate+ Line after 5 seconds**.



- This setting automatically hides the yellow dashed line 5 seconds after activation, so it doesn't remain visible throughout the procedure.