

## FAQ

# How to Maintain Image Width in Side-by-Side Dual Layout

# SAMSUNG R20

## [FAQ – Image Width Scale (Dual)]

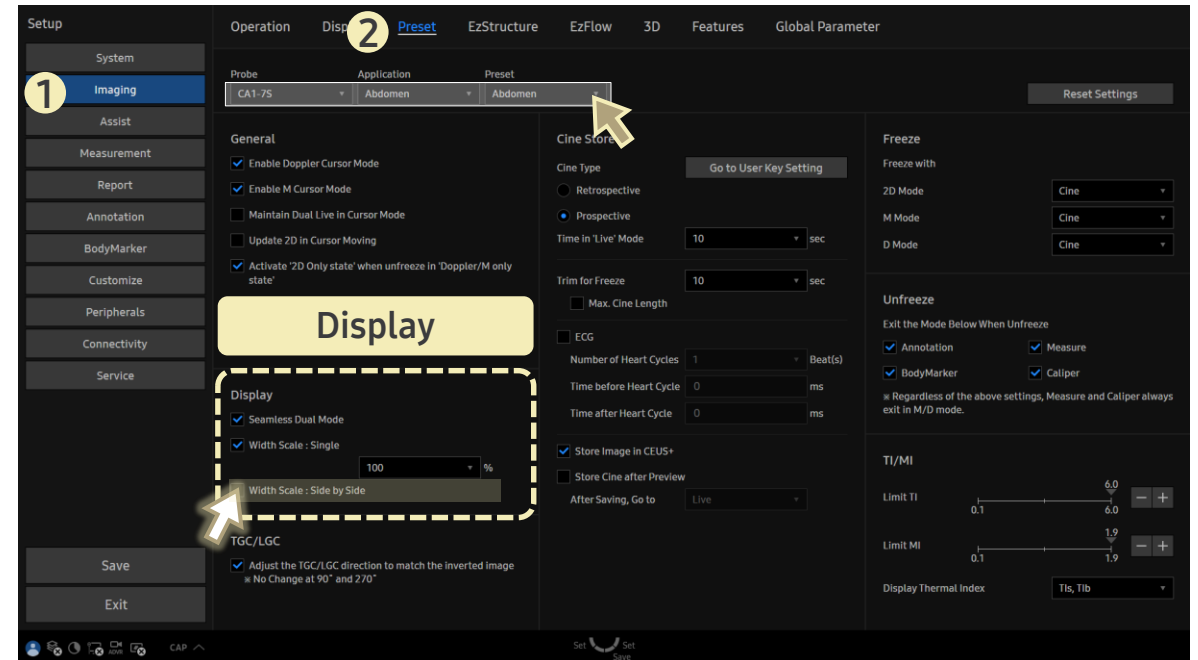
- Question  
In **Dual** mode with side-by-side layout, can I keep the image width of a linear transducer the same as in single mode?

- Answer

■ Path: Setup > Imaging > Preset

1. Select the desired **Probe**, **Application**, and **Preset**.
2. Check the box for **Width Scale : Side by Side**.

\* This setting applies only to linear probes.



- This maintains the image width of a linear probe when switching to **Dual** mode with a side-by-side layout.