

## FAQ

# How to Maintain Dual Live Mode and Activate the Cursor Line Before Entering PW

# SAMSUNG R20

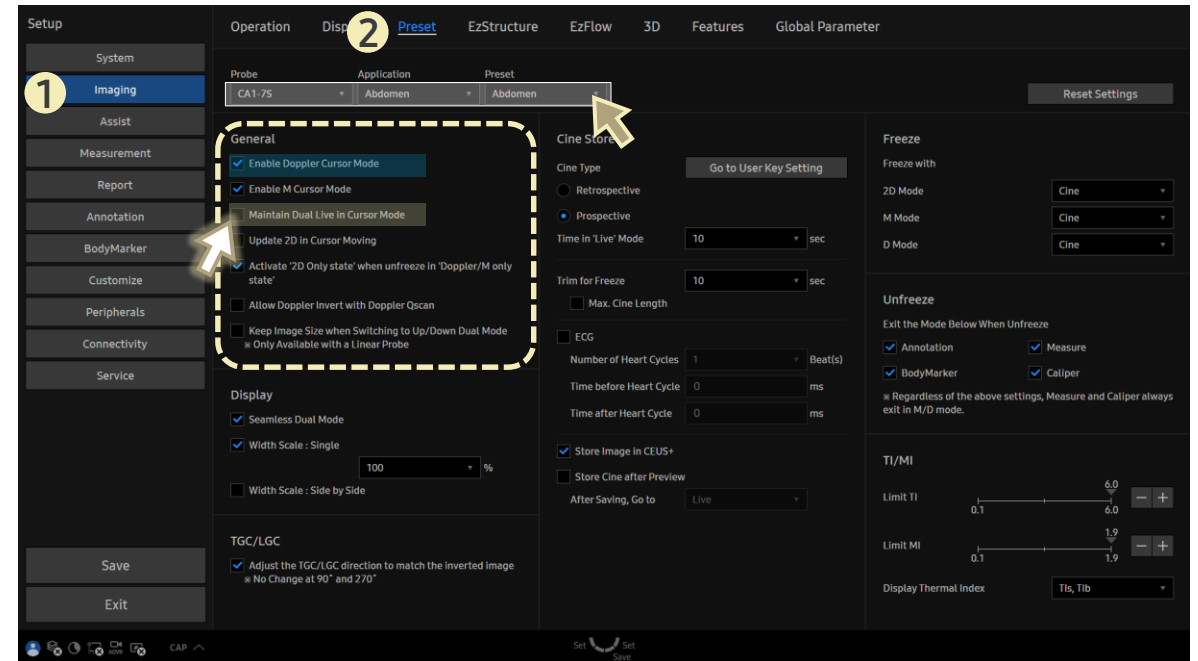
## [FAQ – Cursor Before Entering PW]

- Question  
When in **Dual Live** and entering **PW** mode, it switches to a single screen. Can I keep **Dual Live** active and set the cursor line first?

- Answer

■ Path: Setup > Imaging > Preset

1. Select the desired **Probe**, **Application**, and **Preset**.
2. Check the box to **Maintain Dual Live in Cursor Mode**.
  - ▶ This keeps **Dual Live** active even when entering **PW** mode, instead of switching to single view.



- ☑ Make sure **Enable Doppler Cursor Mode** is also checked.
- **Enable Doppler Cursor Mode**: When enabled, this setting allows you to activate the cursor line first, then proceed to **PW** mode.