

## FAQ

# How to Obtain Ratio and Average Results When Measuring Distance

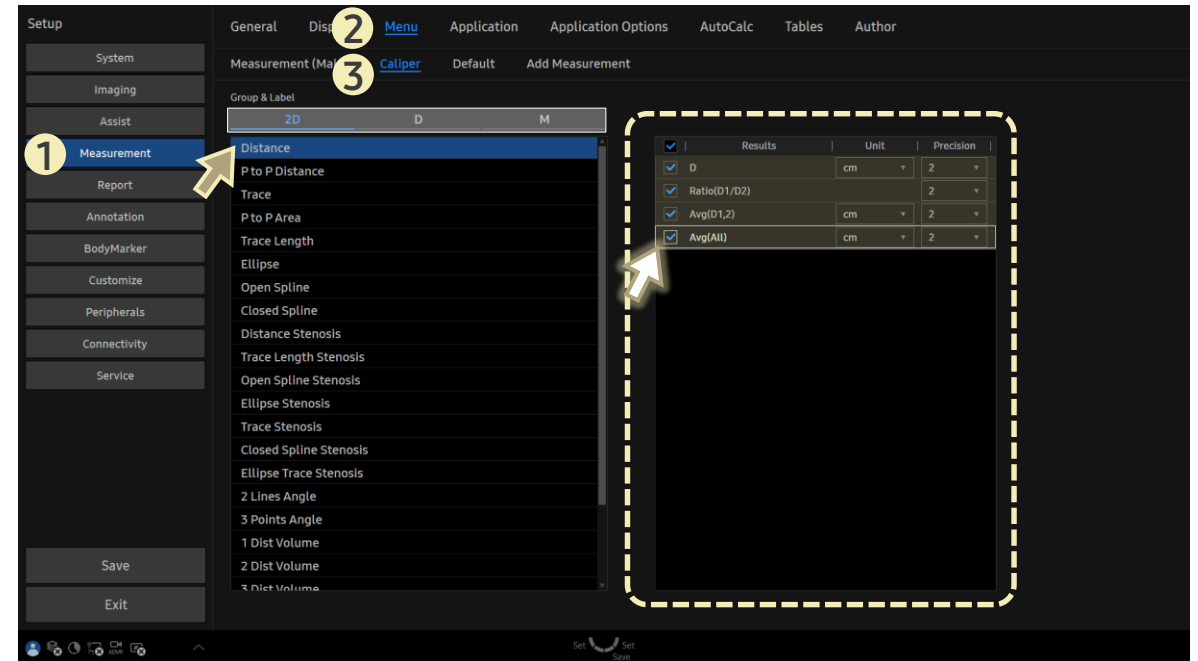
## [FAQ – Distance (Ratio or Average)]

- Question  
Can I configure the system to provide **Ratio** or **Average** values along with consecutive **Distance** measurements in **Caliper** mode?

- Answer

■ Path: Setup > Measurement > Menu > Caliper

1. Select **Caliper**.
2. After selecting **Distance** in 2D tab, check the checkboxes for the desired items in the right panel.



### Avg (D1,2) or Avg (All)

- Provides the average of two or all consecutive distance measurements within a single screen.