

FAQ

How to Modify EzStructure™ Image Parameters in 2D Mode

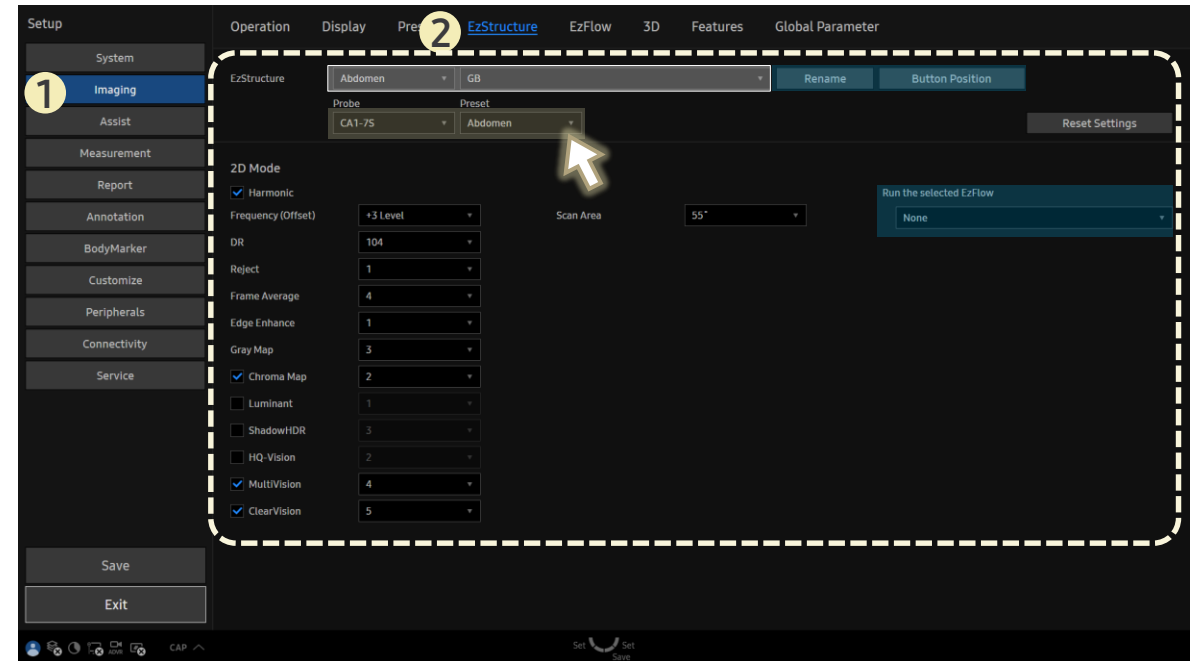
[FAQ – EzStructure™]

- Question
Can I customize **EzStructure™** image settings for a specific application?

- Answer

■ Path: Setup > Imaging > EzStructure

1. From the **EzStructure** dropdown, select the desired **Application** and corresponding **EzStructure item**.
2. Select the target **Probe** and **Preset** for customization
3. Adjust the image parameters for 2D mode.



- Use the **Rename** button to edit the **EzStructure** name.
- Use the **Button Position** button to change its location.
- For applications that support **EzFlow**, selecting an item in **Run the selected EzFlow** links the **EzFlow** setting when entering Color mode.