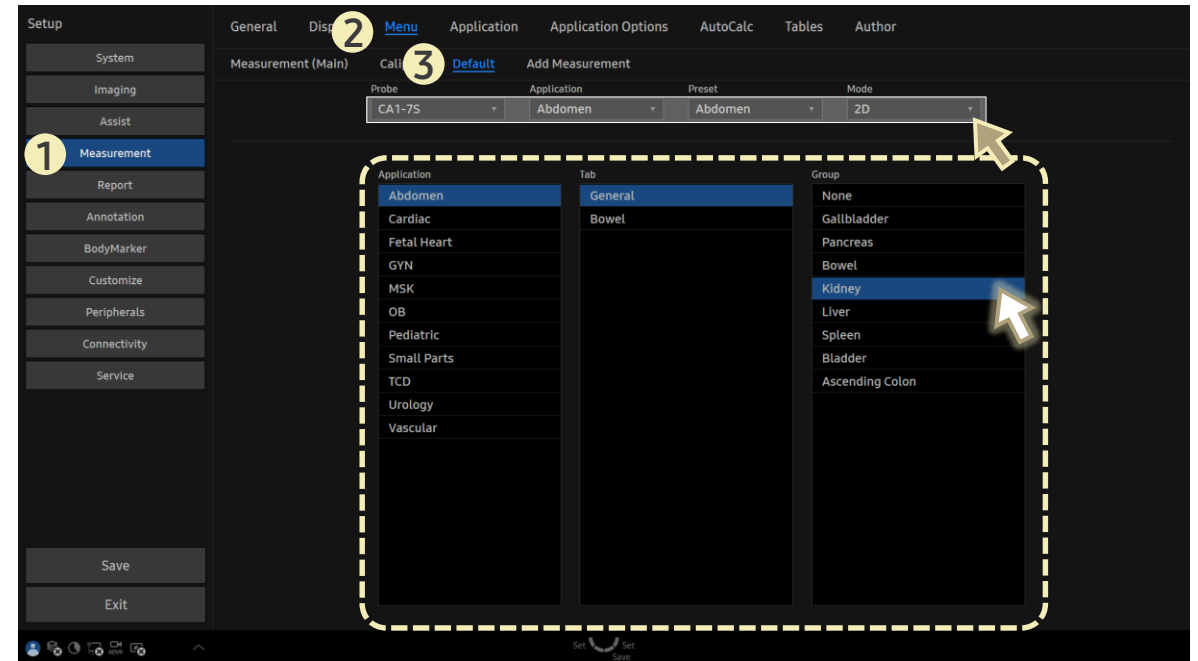


FAQ

How to Set the Default Group for Calculator in Measurement Mode

[FAQ – Calculator (Default Group)]

- Question
Where can I set the default measurement group when using **Calculator**(not Caliper) in measurement mode?
- Answer
 - Path: Setup > Measurement > Menu > Default
 - 1. Select **Probe, Application, Preset** and **Mode**.
 - 2. Select **Group** you want to display first.



- This setting only applies when using the **Calculator** key on the control panel.
- For **Caliper** mode, separate configuration is required in **Setup > Measurement > Application**.