

FAQ

How to Set the Color Mode Position in Dual Live

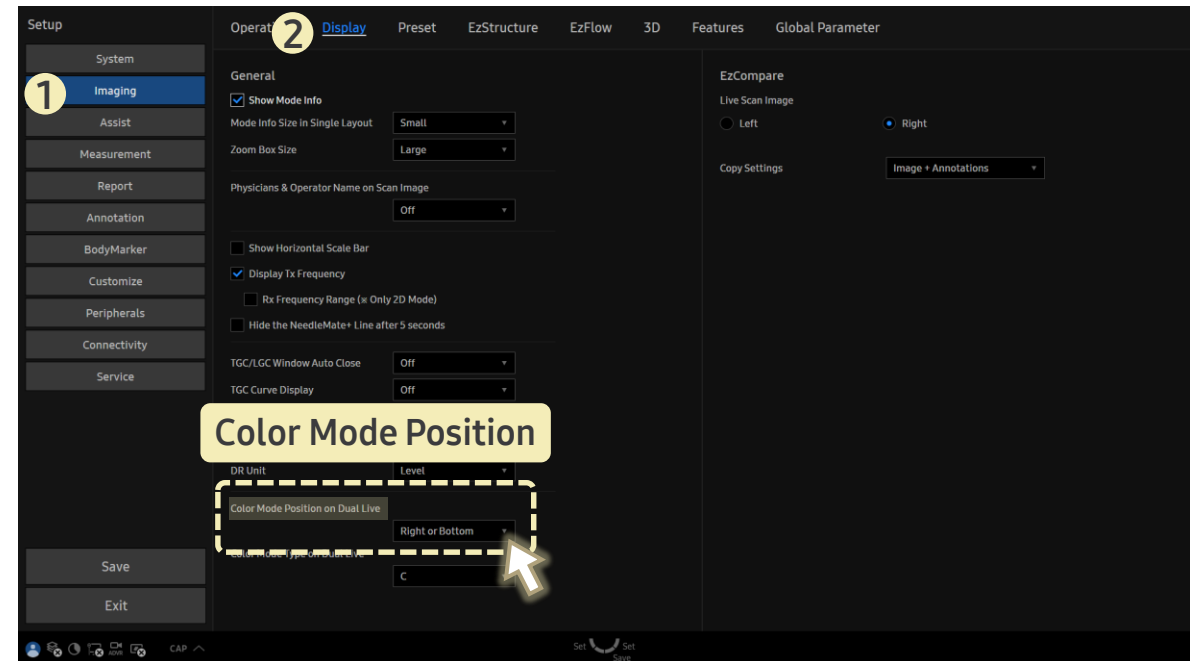
[FAQ – Color Position in Dual Live]

- Question
When I enter **Dual Live** mode, can I choose where the **Color** mode appears on the screen?

- Answer

■ Path: Setup > Imaging > Display

1. Go to **Color Mode Position on Dual Live**.
2. Select a position from the dropdown:
Left or Top or **Right or Bottom**.
 - ▶ **Dual Live** displays **2D** and **Color modes Side by side** or **Up/Down**, depending on the selected dual layout.



The position of the **Color mode** depends on the layout selected for **Dual Live**:

- In **Side by side** layout → **Color mode** appears on the left or right.
- In **Up/Down** layout → **Color mode** appears on the top or bottom.