

FAQ

How to Show or Hide the Measurement Zoom Window

[FAQ – Measurement Zoom Window]

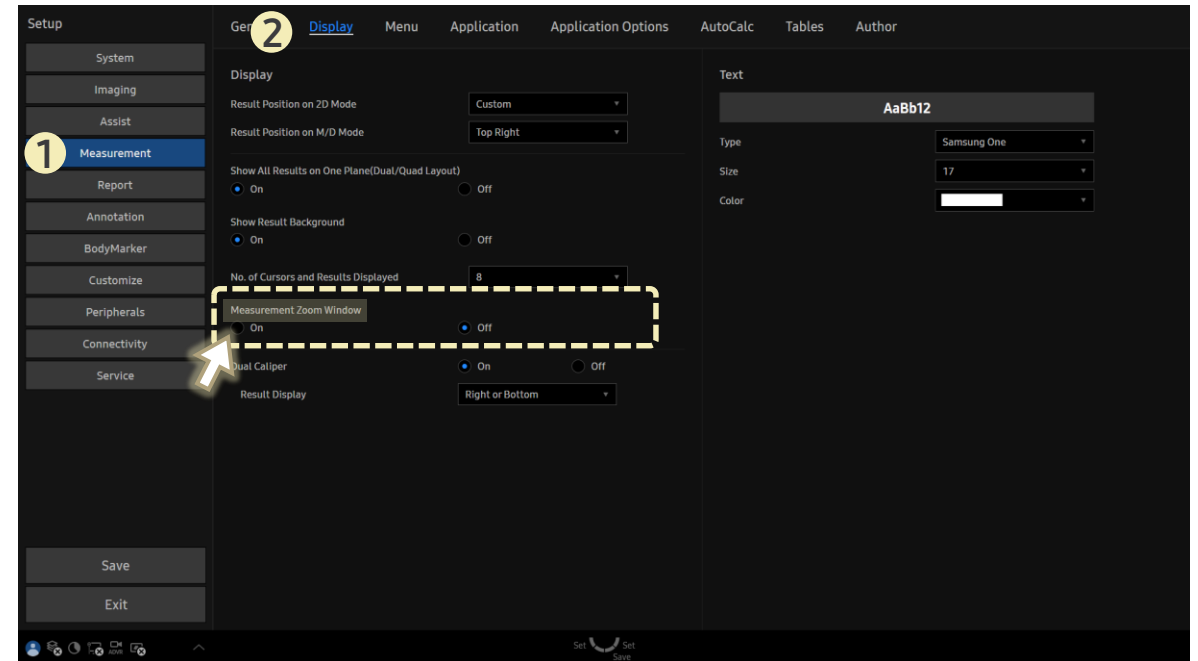
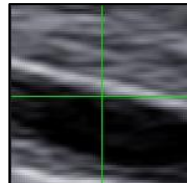
- Question
Can I see a magnified view when placing measurement cursors?

- Answer

■ Path: Setup > Measurement > Display

In **Measurement Zoom Window**, select:

- **On**: A magnified view of the area under the cursor when entering measurement mode.
- **Off**: The zoom window does not appear.



When the zoom window is visible, you can change its position using **Zoom Position** in the bottom touchscreen menu.

- Available positions:
Left Menu, Bottom Lt, Bottom Rt, Top Lt, Top Rt.

