

FAQ

How to Set the Location of the Measurement Results in Dual/Quad Layout

[FAQ – Measurement Results]

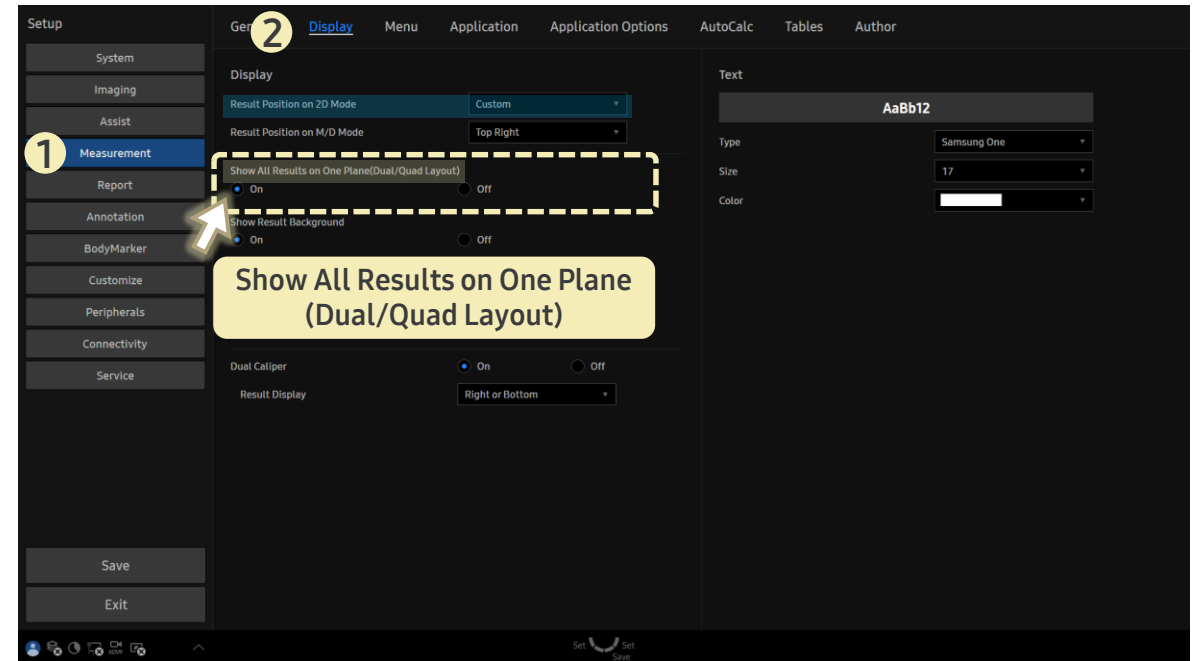
- Question
In **Dual** or **Quad** layout,
can I set the location of the measurement results?

- Answer

■ Path: Setup > Measurement > Display

For **Show All Results on One Plane (Dual/Quad Layout)**,

- **On**: Measurement results will appear in the position specified in **Result Position on 2D Mode**.
- **Off**: Measurement results will appear individually in the area of the image where the measurement was performed.



In Quad mode,

- the order and position of the next active image area can be configured in **Imaging > Operation > Quad: Active Window Sequence** by selecting either **Zigzag** or **Clockwise**.