

## FAQ

# How to Set the Line Display Method for 2D Measurements

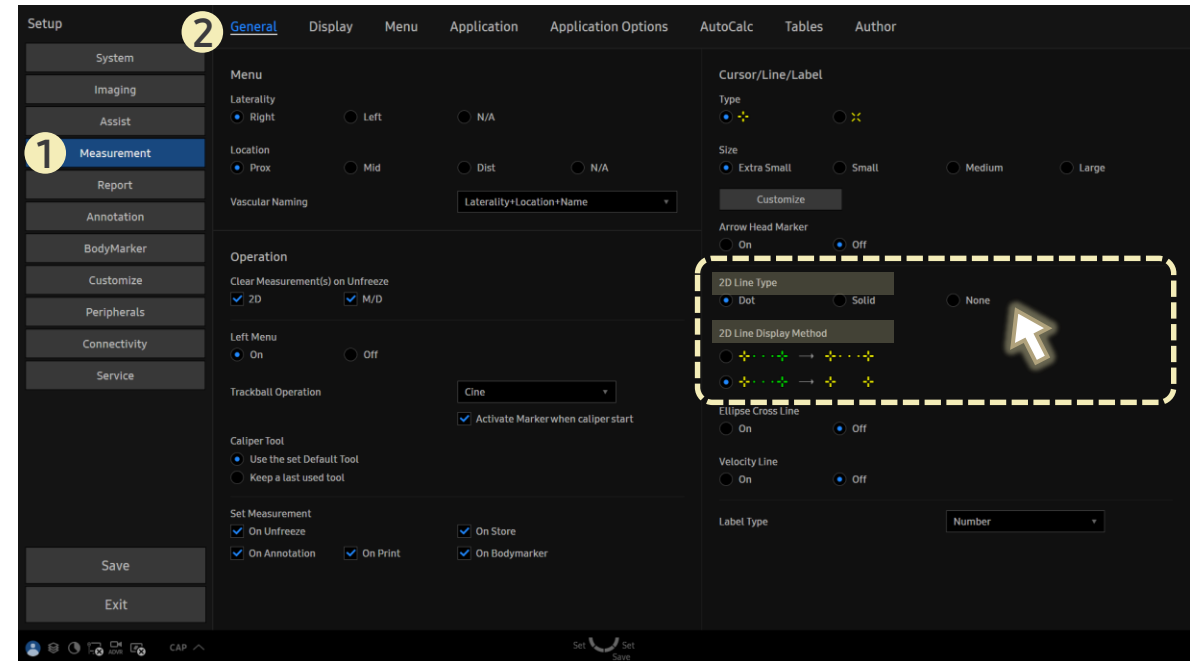
## [FAQ – Measurement]

- Question  
Can I customize how lines appear during 2D measurements?

- Answer

■ Path: Setup > Measurement > General

1. In **2D Line Type**, select **Dot**, **Solid**, or **None**.
2. Set the post-measurement behavior in **2D Line Display Method**.
  - ▶ If **None** is selected:
    - No line is displayed before or after measurement.
    - **2D Line Display Method** option becomes disabled.



### If **Dot** or **Solid** is selected:

- During measurement, the line appears in the selected style (Dot or Solid).
- After completing the measurement, the line will either **Remain Visible** or **Disappear**, depending on the setting in **2D Line Display Method**.