

## FAQ

# How to Set Up Auto Delete for Storage Management

# SAMSUNG R20

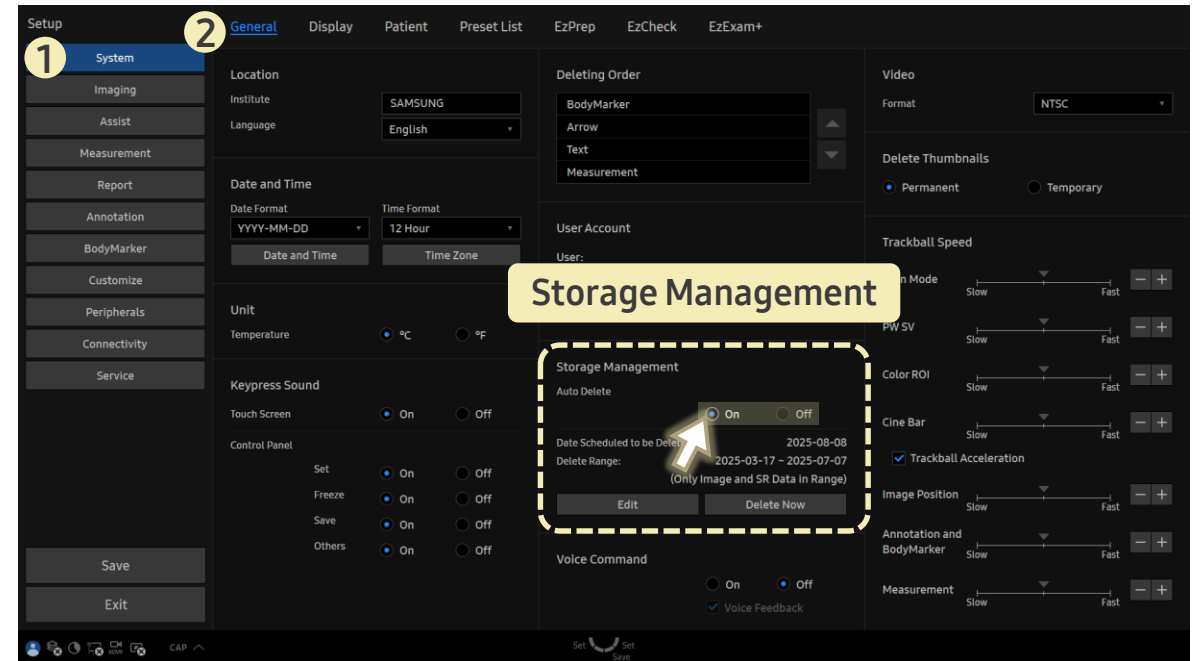
## [FAQ – Auto Delete]

- Question  
Can I automatically delete old data to manage storage more efficiently?

- Answer

■ Path: Setup > System > General

1. Under **Storage Management**, turn **Auto Delete On**.
2. This enables the **Edit** and **Delete Now** buttons.
3. Click **Edit** to choose one of the following methods:
  - ▶ Delete by Period
  - ▶ Delete by Capacity,  
and set detailed conditions accordingly.



- The **Delete Now** button is disabled during an active exam.