

FAQ

How to Sync TGC/LGC Control Direction on Flipped Image Orientation

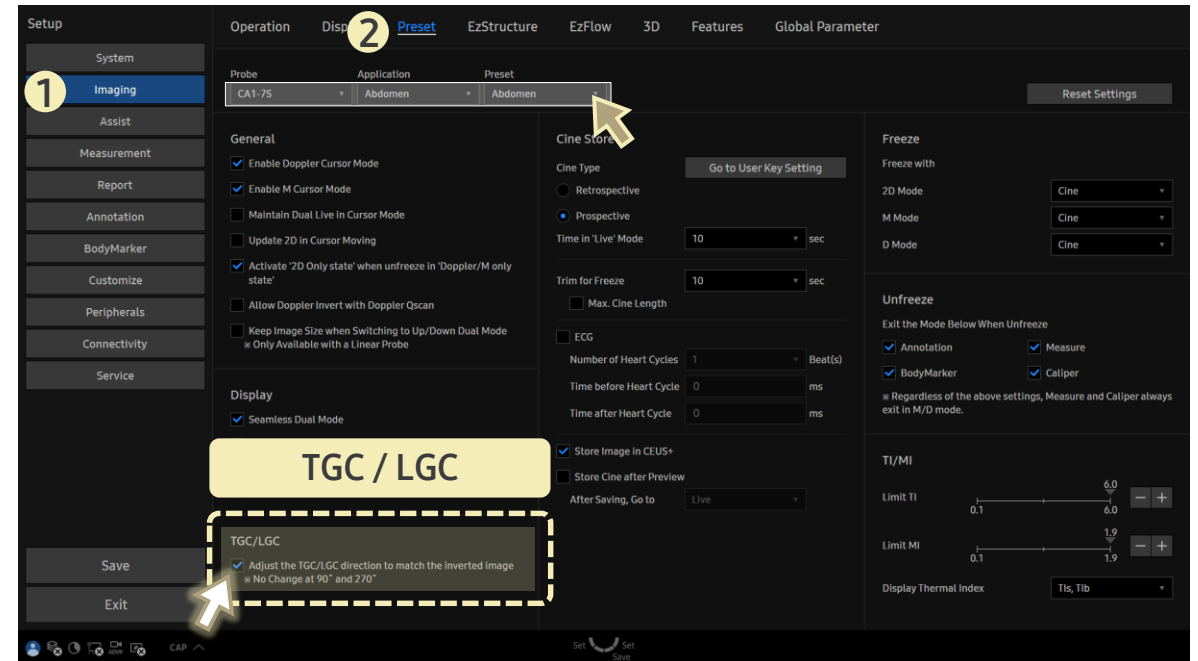
[FAQ – TGC/LGC]

- Question
When I flip the image, the **TGC** or **LGC** looks reversed.
Can it be aligned to the image orientation?

- Answer

■ Path: Setup > Imaging > Preset

1. Check the box for **Adjust the TGC/LGC direction to match the inverted image**.
2. This aligns the **TGC** with vertical flips and the **LGC** with horizontal flips.



TGC and LGC adjustments do not change when the image is rotated 90° or 270°.

- **TGC (Time Gain Compensation)**: Adjusts gain based on depth.
- **LGC (Lateral Gain Compensation)**: Adjusts gain for the left and right sides of the image.