

FAQ

How to Show Reference Ranges for Liver Stiffness and Fat Quantification in Report

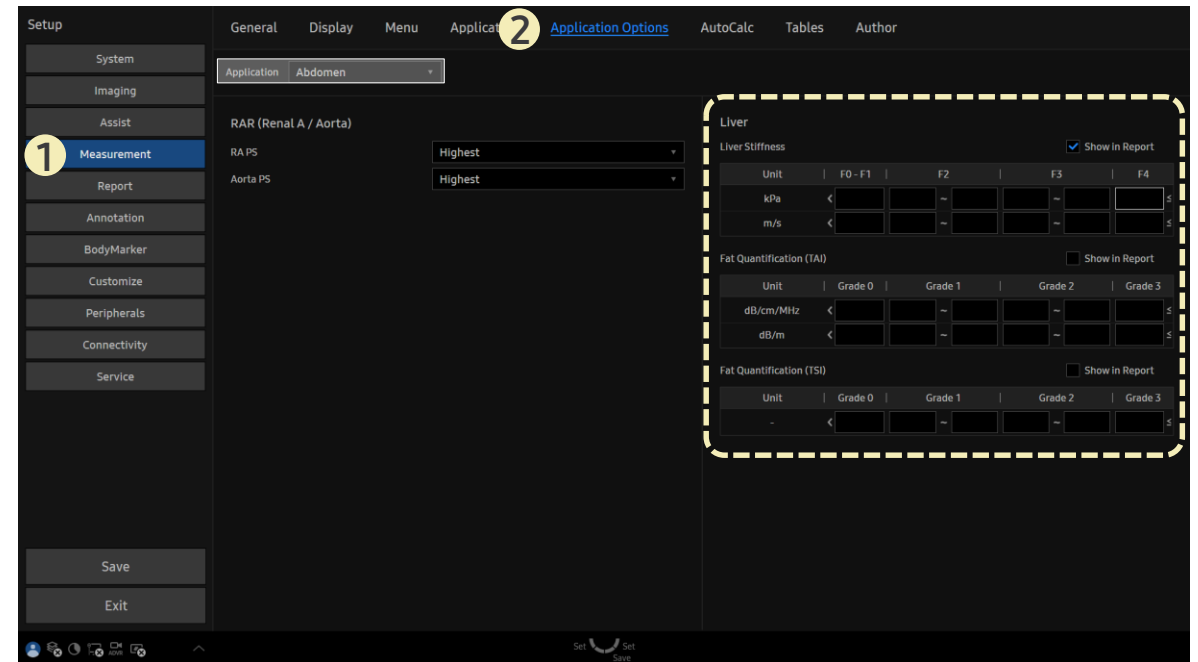
[FAQ – Reference Ranges for Liver]

- Question
Can I set reference value ranges for liver stiffness (**S-Shearwave Imaging**) or fat quantification (**TAI, TSI**) and have them appear in the report?

- Answer

■ Path: Setup > Measurement > Application Options

1. From the **Application** dropdown, select **Abdomen**.
2. Enter reference values for each category.
3. Check **Show in Report** to display the entered values in the report.



- These reference ranges are shown in the report only after a measurement is performed using **S-Shearwave Imaging**, **TAI**, or **TSI**.
- They are not displayed in the report before measurements are taken.