

FAQ

How to Set the Default Tool for Caliper in Measurement Mode

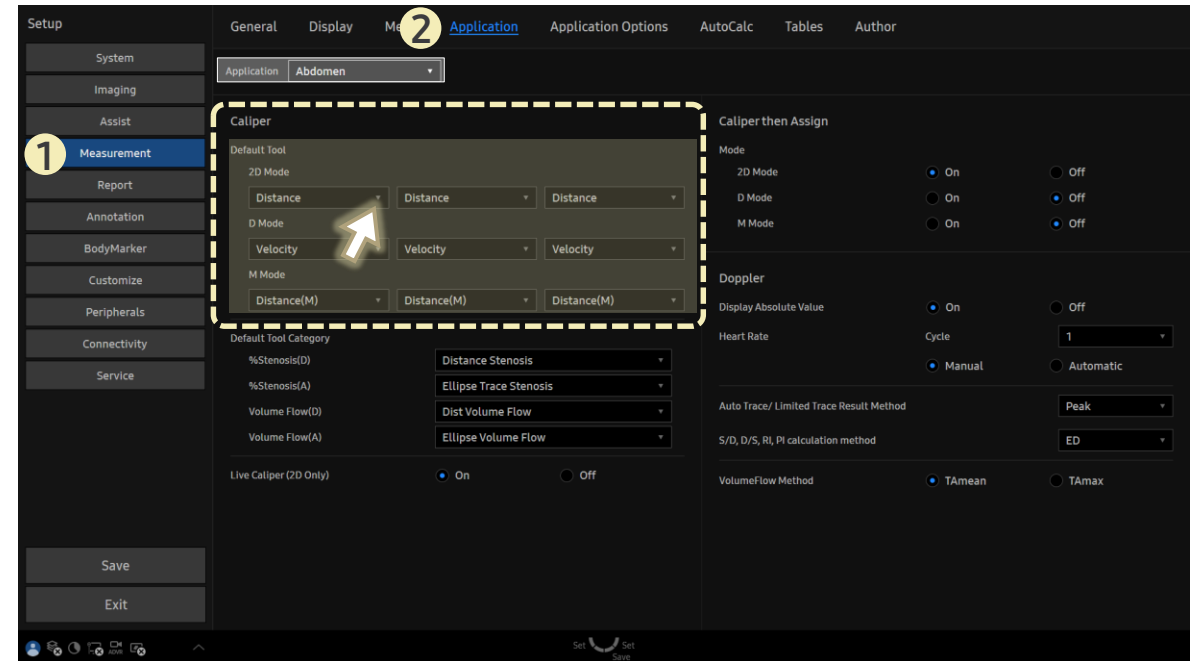
[FAQ – Caliper (Default Tool)]

- Question
Where can I set the default measurement tool when using **Caliper**(not Calculator) in measurement mode?

- Answer

■ Path: Setup > Measurement > Application

1. Select **Application**.
2. The default tool can be set for each mode individually.
Click the down arrow (▼) and select from the dropdown list.



- When using **Caliper**, the first item in the list is activated first.
- Press the **Change** key to switch to the second or third item.

