

# FAQ

## How to Use EzReport™

## [FAQ – EzReport™]

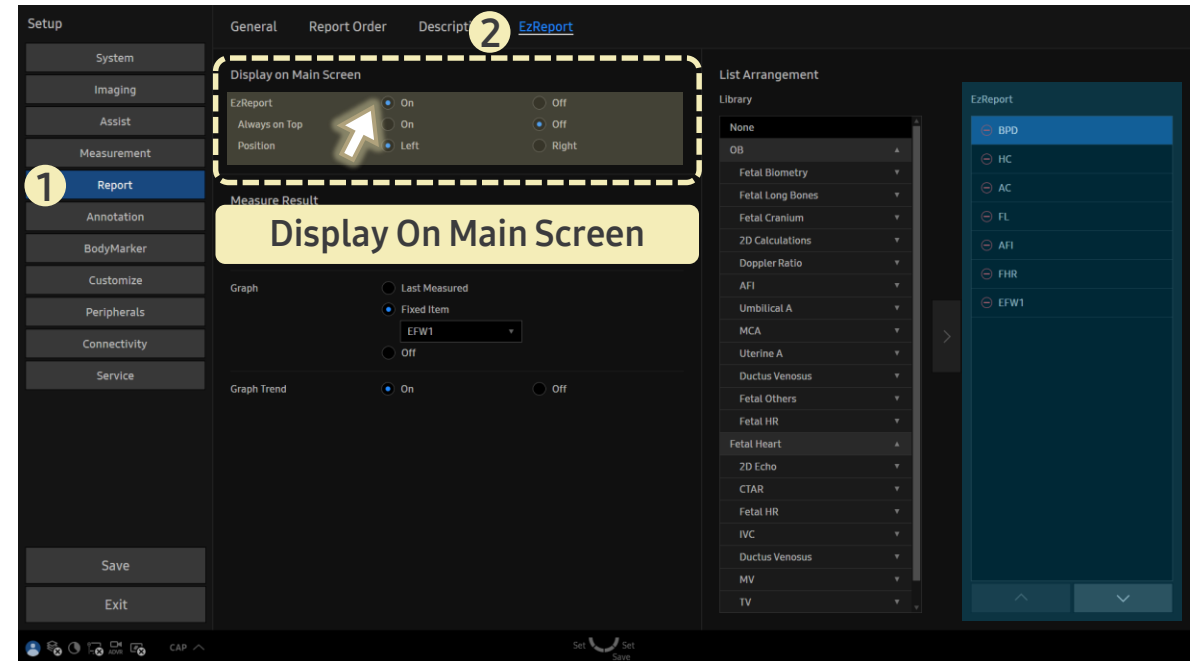
- Question  
How can I use **EzReport™**?

- Answer

■ Path: Setup > Report > EzReport

Click **On** to activate **EzReport™**.

- ▶ Click **On** for **Always On Top** to keep **EzReport™** fixed at the top.
- ▶ In **Position**, select whether to display **EzReport™** on the left or right side of the monitor.



- The list displayed in **EzReport™** can be configured in **List Arrangement**.
- Click **EzReport™** icon on the monitor to open or close the page.

