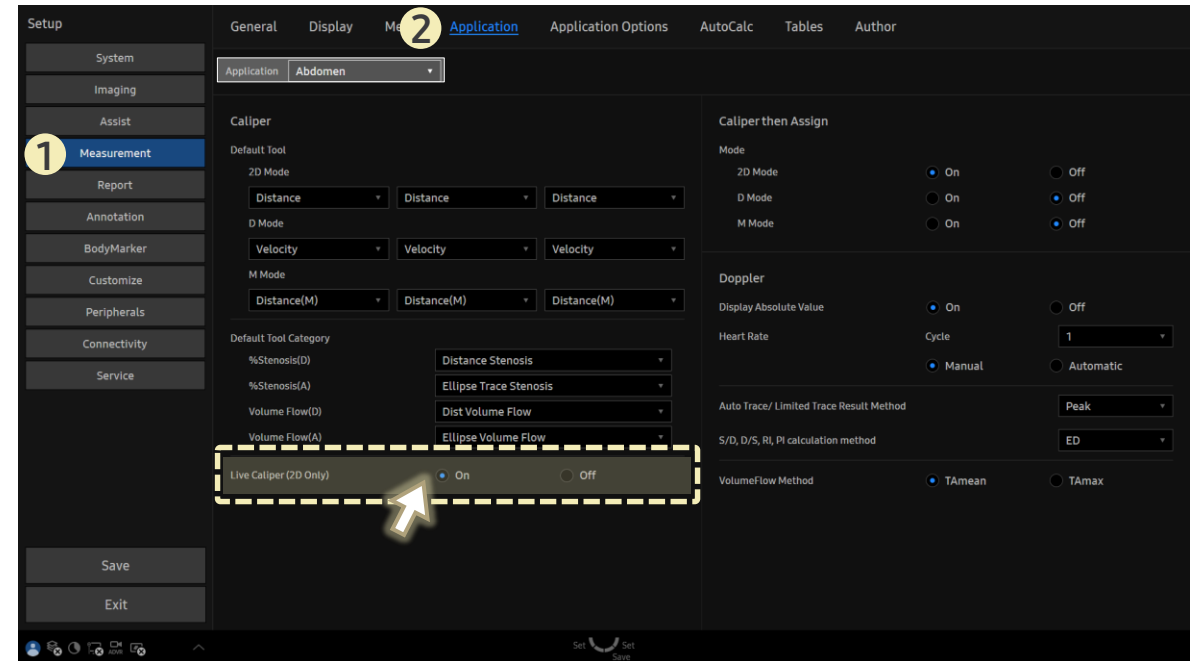


## FAQ

# How to Use Caliper Without Freeze

## [FAQ – Measurement (Caliper)]

- Question  
When I press the **Caliper** button during scanning, I want the image to stay live without freezing. How can I set this?
- Answer
  - Path: Setup > Measurement > Application
  - 1. From the **Application** dropdown, select your desired application (e.g., Small Parts, etc.).
  - 2. Under **Live Caliper (2D Only)**, choose **On** to enable measurement without freezing the image.



- When **On**, pressing the **Caliper** key during real-time scanning will display the cursor without freezing the image.
- When **Off**, pressing the **Caliper** key will freeze the image before the cursor appears.