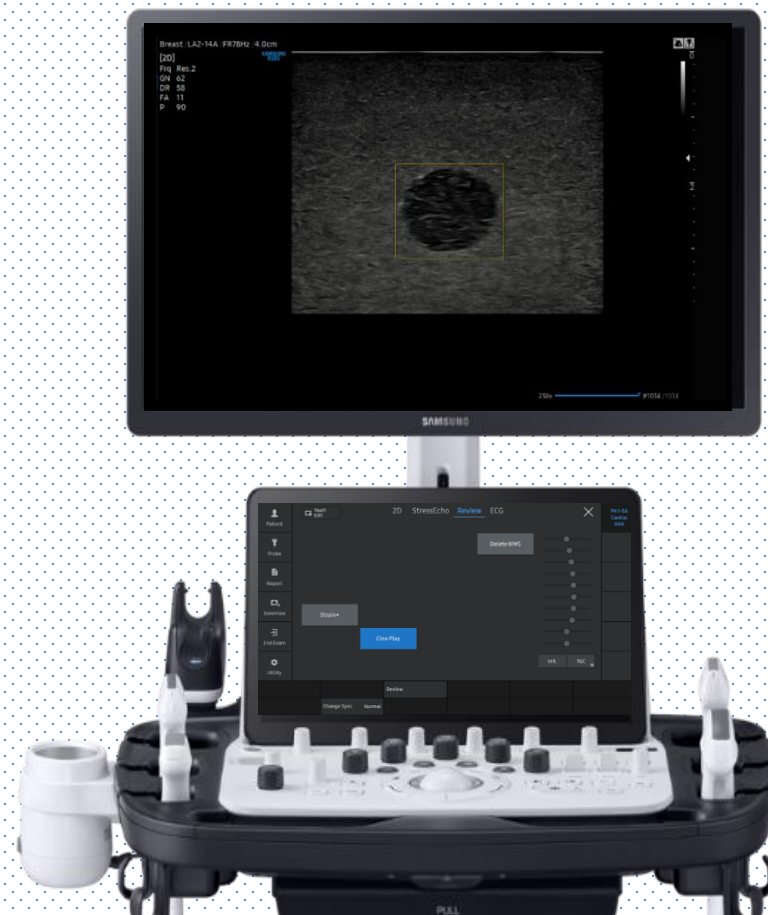
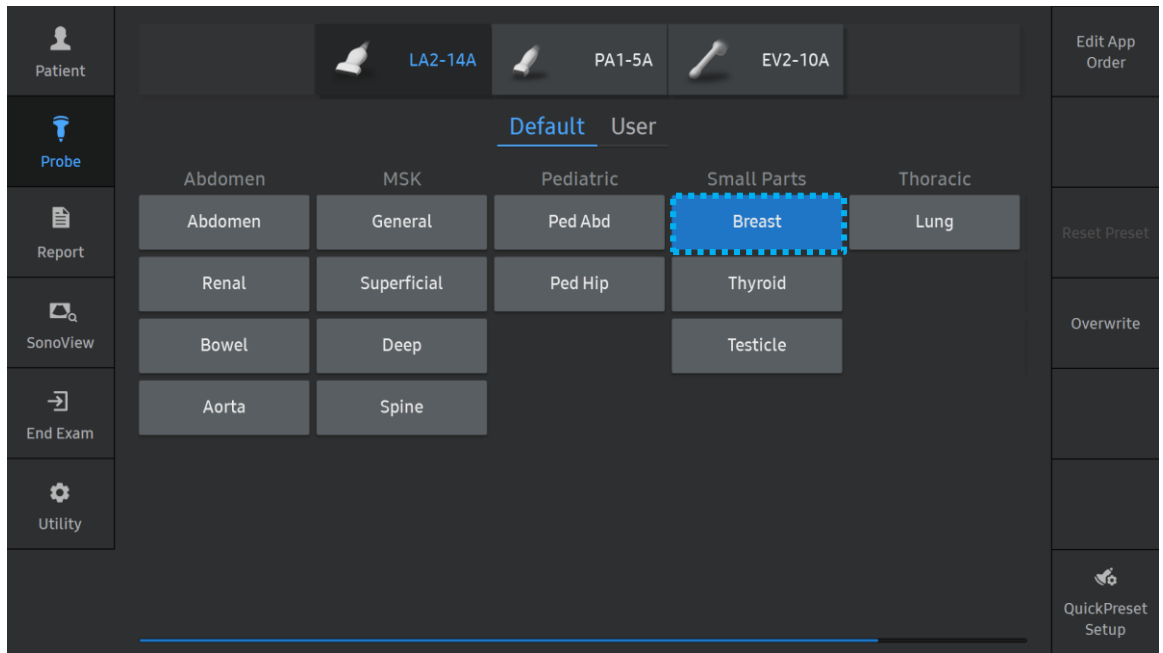


# Live BreastAssist™

## V series Quick Guide



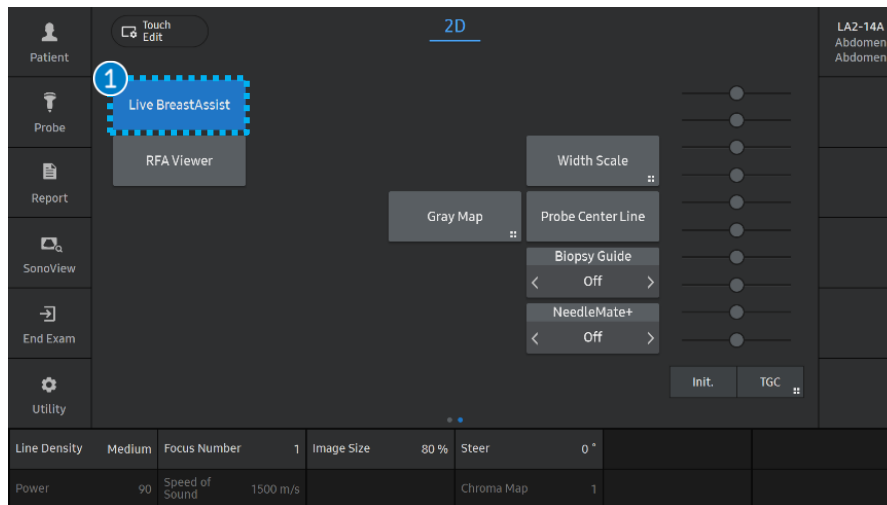
# 1. Probe and Preset



※ Available application and preset

Probe	All Linear Probe (Except LA3-16AI)
Application	Small Parts
Preset	Breast

## 2. Start Live BreastAssist™



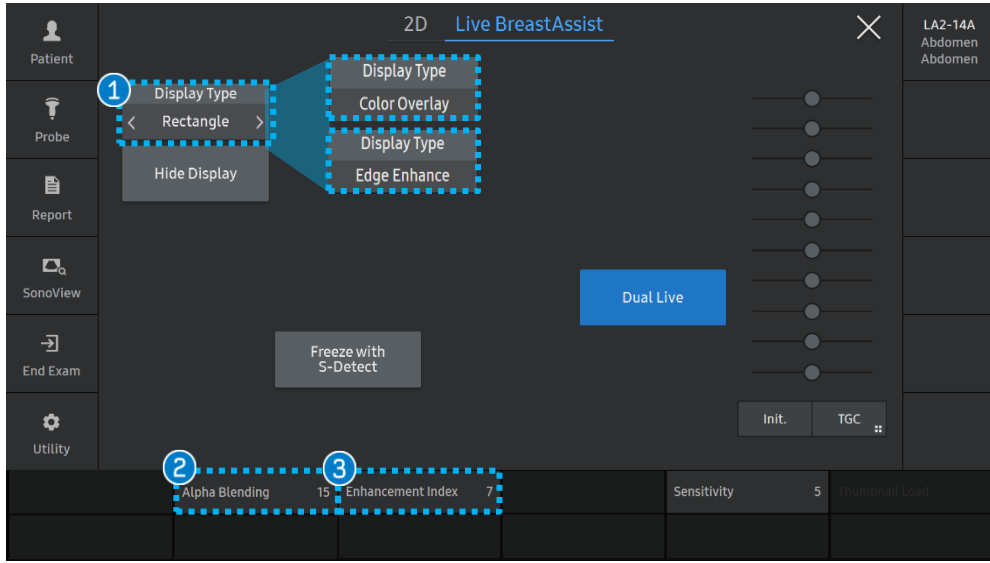
### 1 Live BreastAssist™

Select the Live BreastAssist™ button on the touch screen.

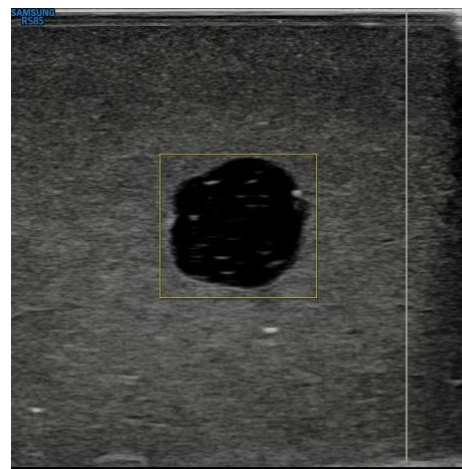
### ★Tips

- Adjustable B-Mode Parameters are [Gain] & [TGC].
- Detection rate can be affected by Gain, TGC control. It would be decreased if image Gain is too low.
- Dynamic Range would not affect Live BreastAssist™'s detection ability.
- Frame rate may drop when ShadowHDR™ is activated.
- When it detects both normal tissue and lesion at the same time, slightly changing the probe angle would be helpful to exclude the ROI from the normal tissue while maintaining the lesion ROI.
- [Live BreastAssist] ON status can be saved on User preset.

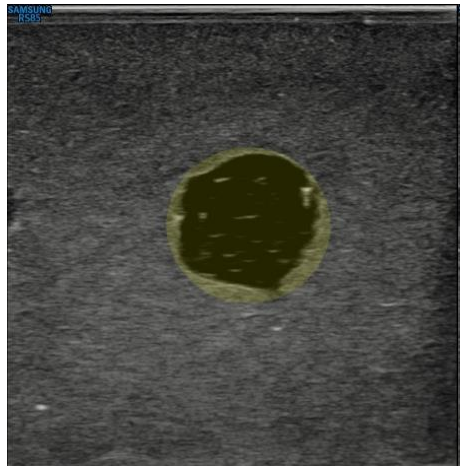
# 3. Parameters



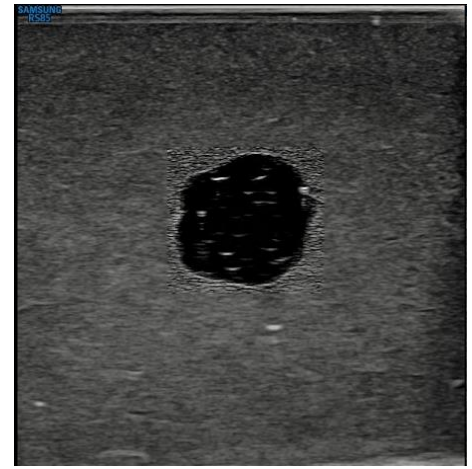
1 Display Type	Rectangle	ROI box will be appeared on suspicious area.
	Color Overlay	Overlay color will be appeared on suspicious area.
	Edge Enhance	The enhanced image will be appeared on suspicious area.
2 Alpha Blending		User can set the transparency. (Range 1-100, Default 15) * Only activate it with Color Overlay type
3 Enhancement index		User can set the edge strength. (Range 1-10, Default 7) * Only activate it with Edge Enhance type



Rectangle

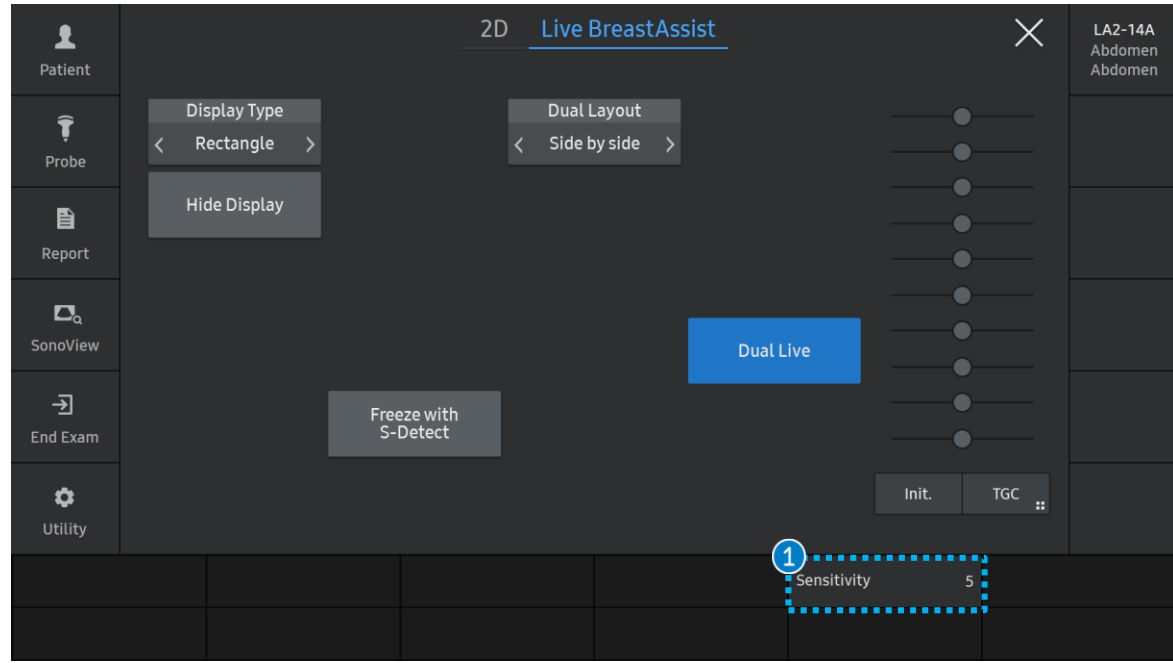


Color Overlay



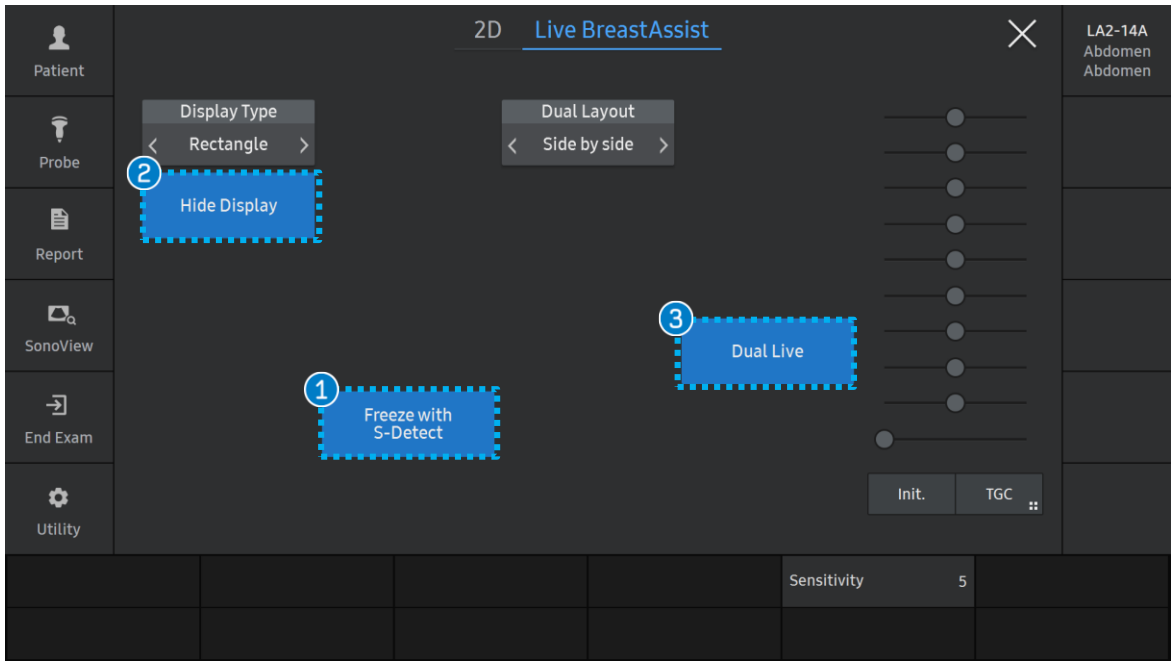
Edge Enhance

# 3. Parameter - Sensitivity



1 Sensitivity (Index 1-10)	Sensitivity 1	Sensitivity 3	Sensitivity 4	Sensitivity 5	Sensitivity 10
	Low Index	Index 3 to 4	Index 4 to 5	Default Index (Recommend to Use)	The closer to 10
	Lactating or Dense breast patients to minimize the multiple ROI interference.	For general examination.	For medical check-up.		The Higher the Sensitivity and Detection Rate.

# 4. Touch Screen



1 Freeze with S-Detect	S-Detect™ for Breast will be automatically activated on Freeze.
2 Hide Display	To hide target ROI and focus on the B-Mode image.
3 Dual Live	Displays both [2D mode / Color mode] and [Live BreastAssist].

★Tips

- [Freeze with S-Detect] ON status can be saved on User preset.

- The features, options may not be commercially available in some countries.
- Sales and shipments are effective only after the approval by the regulatory affairs. Please contact your local sales representative for further details.
- This Quick guide does not include all of the details of instruction, fore more detail, please refer to V series User Manual.
- Do not distribute this document to customers unless relevant regulatory and legal affairs officers approve such distribution.
- This User Quick Guide is based on V series V1.07.
- Disclaimer: Some Images in this content were obtained from other system.

**SAMSUNG MEDISON CO., LTD.**

© 2025 Samsung Medison All Rights Reserved.

Samsung Medison reserves the right to modify the design, packaging, specifications, and features shown herein, without prior notice or obligation.