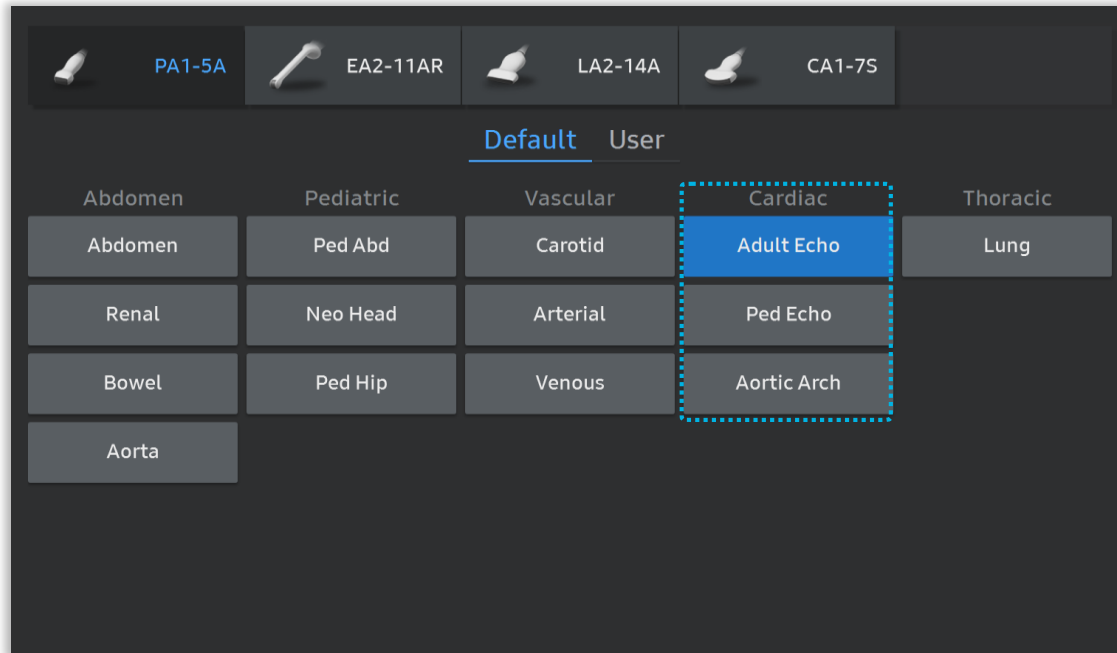


Strain+ RV

V series Quick Guide



1. Probe and Preset

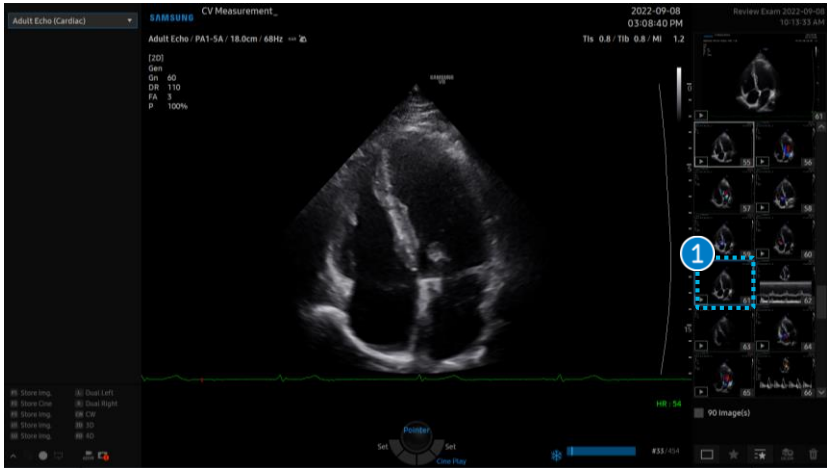


※ Available application and preset

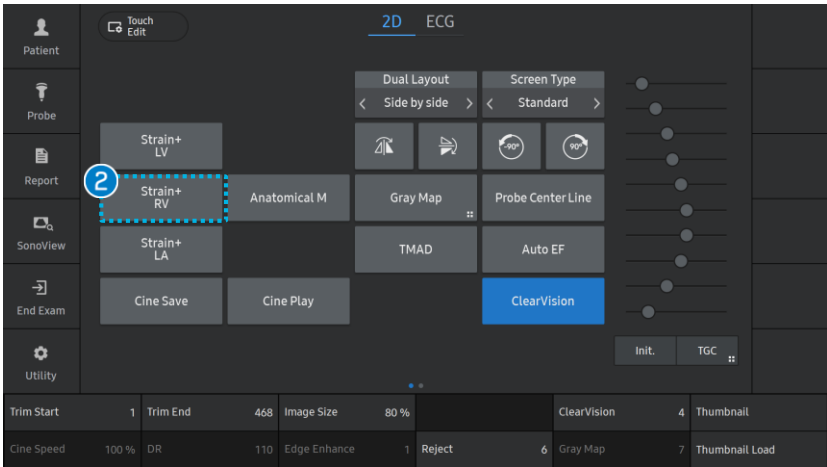
Application	Cardiac
Preset	Adult Echo, Ped Echo, Aortic Arch
Mode	2D
ECG Heart rate	30~240

Strain+ RV

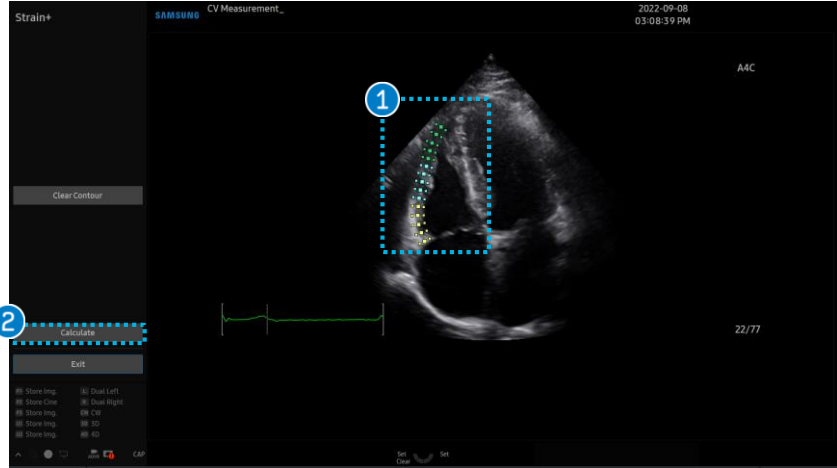
2. Start RV Strain



- 1 Image scan & Save
Save the cine clip for RV Strain.
※ The requirement for RV Strain analysis is RV focused 4 chamber view. Select a 2D cine from the thumbnail list.
- 2 Select Strain+ RV
Select [Strain+ RV] button on the touch screen to start.

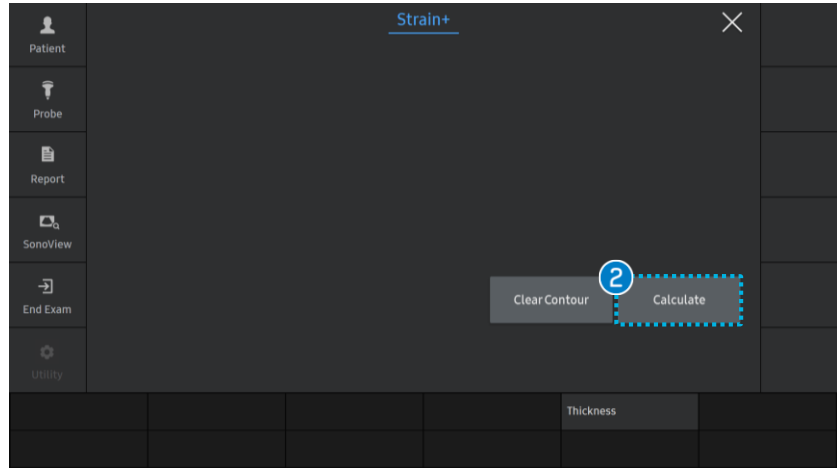


3. Select Strain image

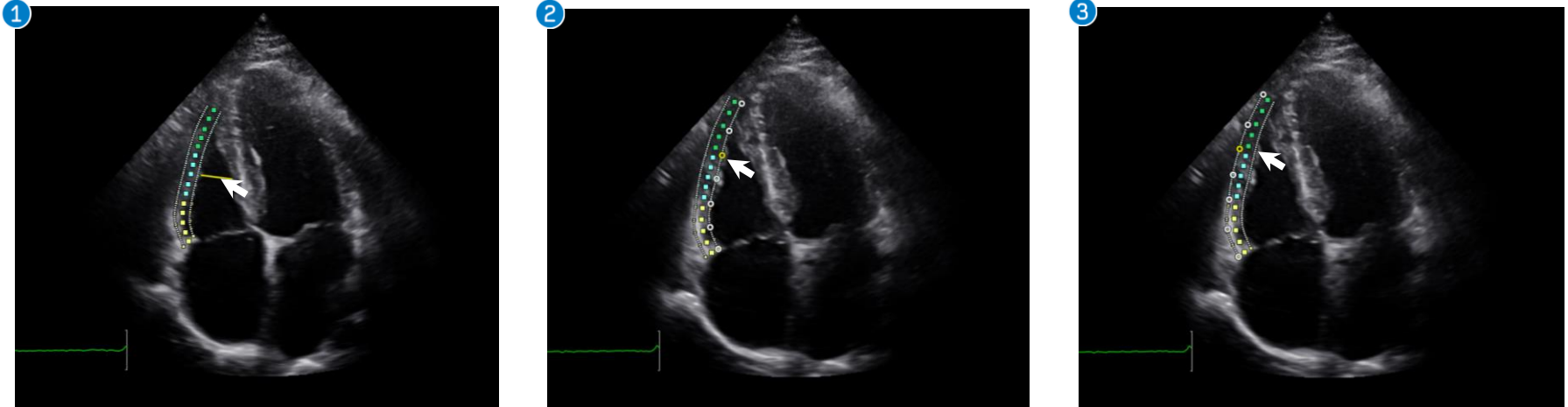


1 Check the contour	RV contour automatically appears. Check the border line of RV freewall.
2 Calculate	Click Calculate for the analysis.

※ Before moving on to Calculate, if contour editing is needed, please follow the steps on next slides (#4~6).



4. Edit RV Contour



1 Total contour

When you place the Pointer in the middle of RV, a yellow bar will be appear
 → Press the [Set] button to edit the contour line by using the trackball.
 → Press the [Set] button again to confirm.

2 Endocardial point edit

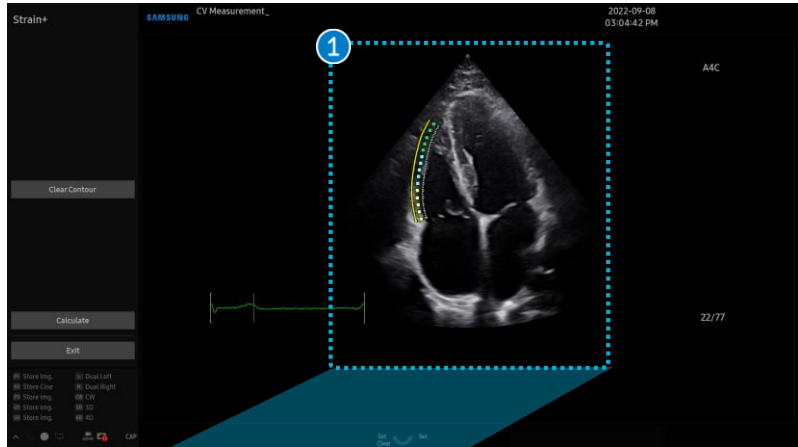
When you place the Pointer close to the endocardial point, the endocardial border line will change to yellow points. → Press the [Set] button to edit the points of the line that needs to be modified. → Press the [Set] button again to confirm.

3 Epicardial point edit

When you place the Pointer close to the epicardial point, the epicardial border line will change to yellow points. → Press the [Set] button to edit the points of the line that needs to be modified → Press the [Set] button again to confirm.

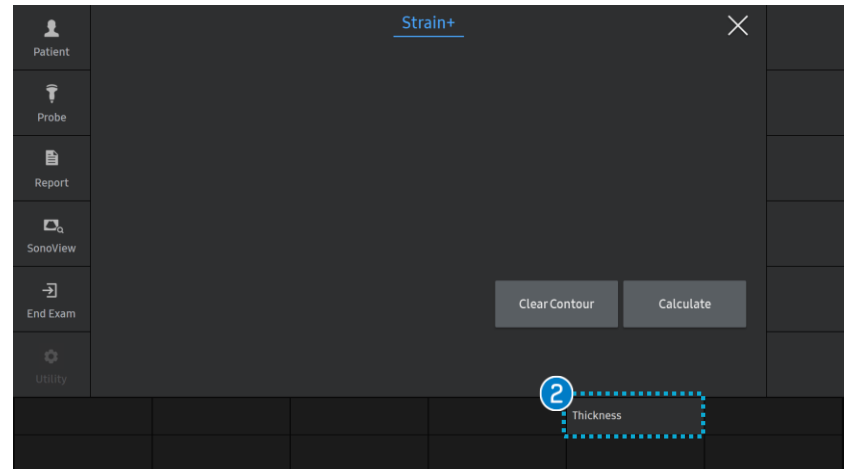
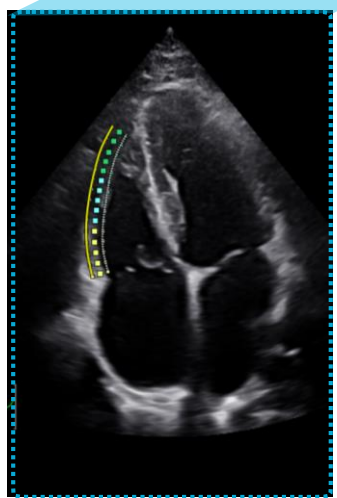
Strain+ RV

5. Adjust contour thickness

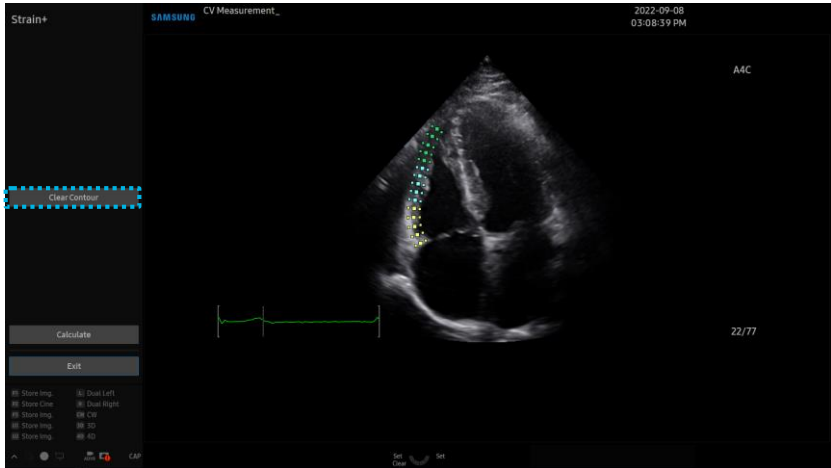


1 Adjust the thickness

- 1 If the indicator's positioned little closer with epicardial border line, the epicardial border line will turn to yellow.
- 2 Then you can easily adjust the thickness as same as previous. Another way to adjust the thickness. Just rotate the toggle key.



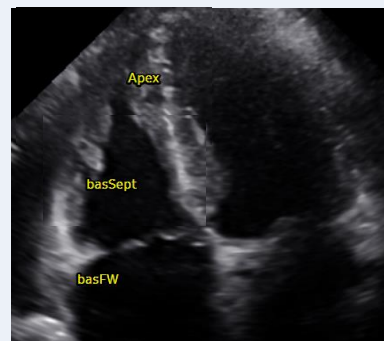
6. Clear Contour



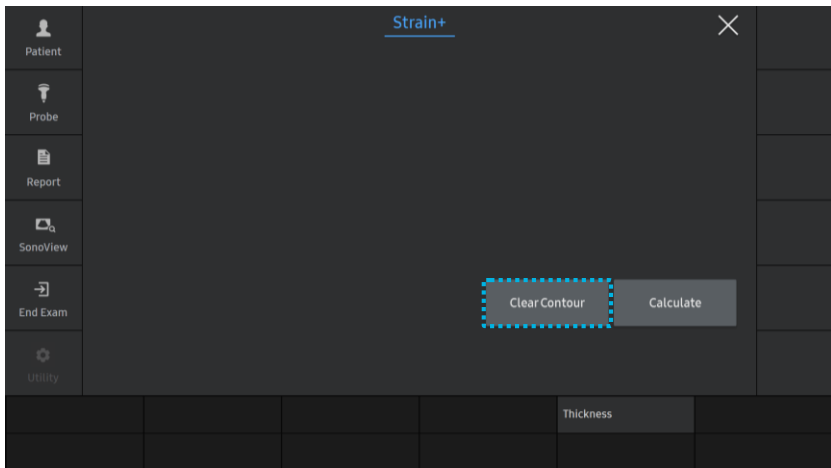
1 Clear Contour

If you want to clear border line, select the [Clear Contour] and set the following three points.

2 RV 3 points of contour

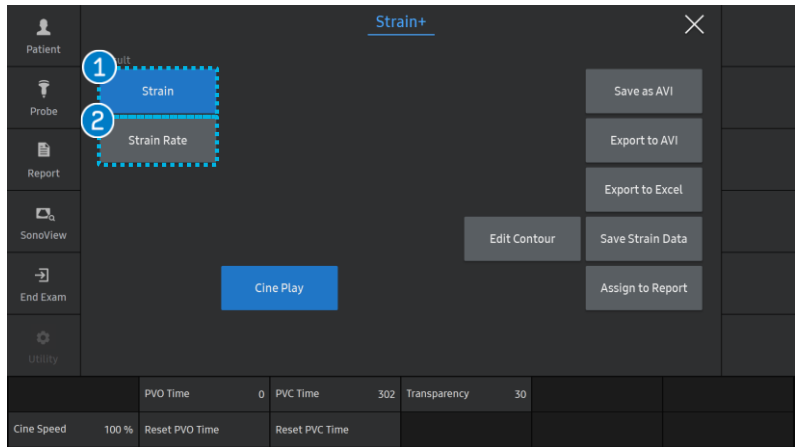


Use the trackball and the [Set] button to specify 3 points in order, basFW , basSept and Apex.

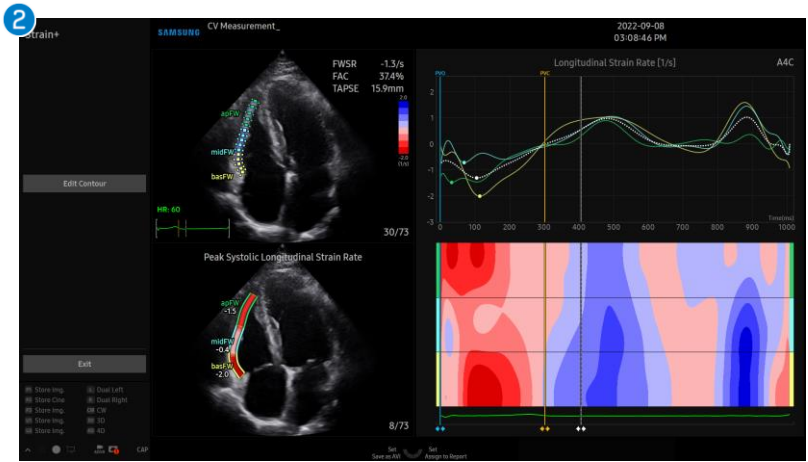
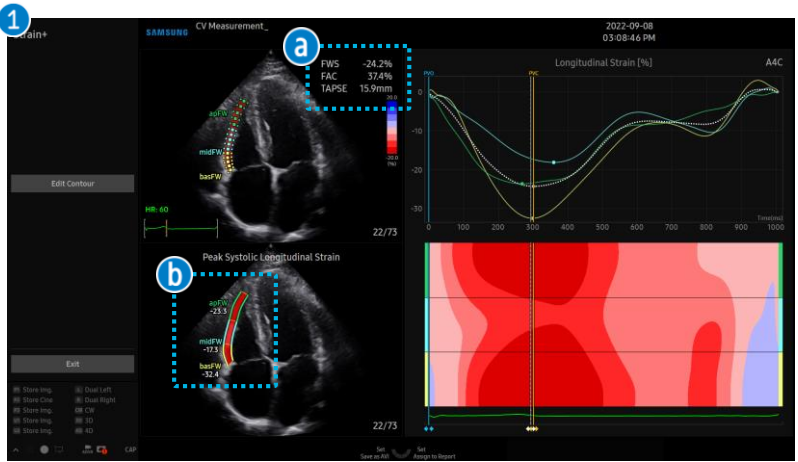


Strain+ RV

7. Calculate and Result Display

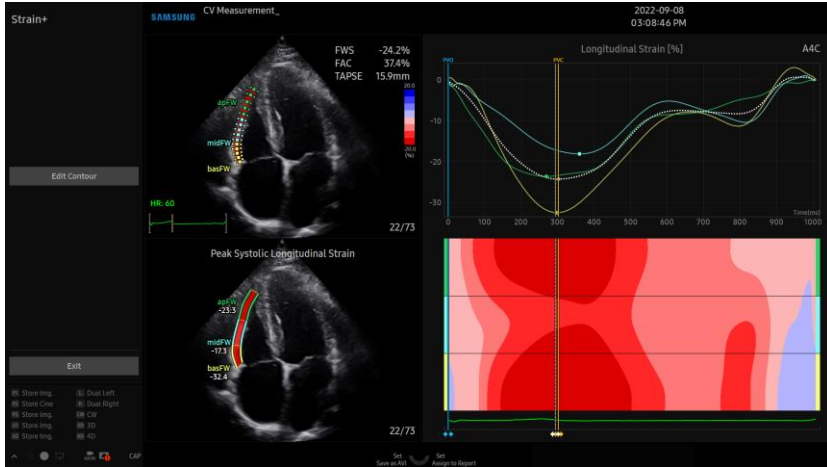


- Result**
- 1 Strain: Longitudinal strain result displayed
 - 2 Strain Rate: Longitudinal strain rate result displayed
 - a
 - FWS: Free Wall Strain result
 - FAC: Fractional Area Change
 - TAPSE: Tricuspid Annular Plane Systolic Excursion
 - b RV freewall segmental strain: Each basFW, midFW, apFW strain results displayed



Strain+ RV

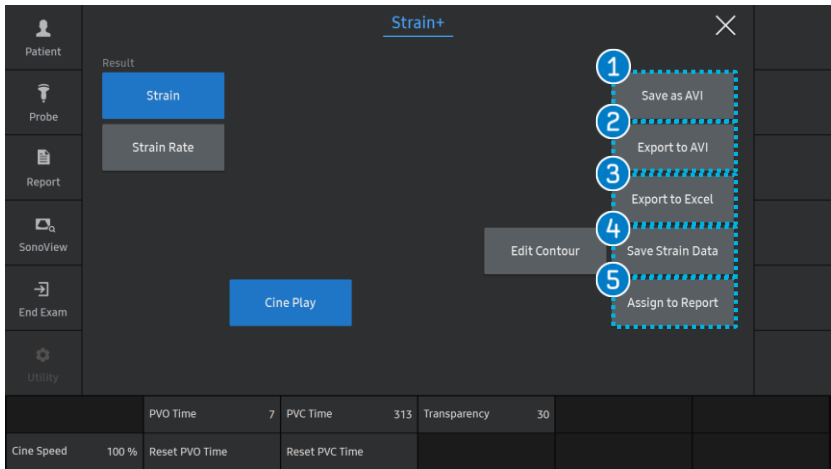
8. Confirm and Edit contour



1 Edit Contour	Available to 'Edit' RV border line.
2 Frame	When you turn off 'Cine Play', adjusting frame is available to check each frame.
3 Re-calculate	After Edit contour, click Re-calculate. ※ This is applied to only the selected frame.
4 PVO Time	Adjust the Pulmonary Valve Opening Time.
5 PVC Time	Adjust the Pulmonary Valve Closure Time.
6 Transparency	Adjust the transparency of RV contour.

Strain+ RV

9. Total strain result



<p>1 Save as AVI</p>	<p>Saves the result with a captured screen as an AVI file.</p>
<p>2 Export to AVI</p>	<p>Exports the result and the representative image as an AVI file. <i>※ This is only available if a USB is connected.</i></p>
<p>3 Export to Excel</p>	<p>Saves the result and the representative image as an Excel file. <i>※ This is only available if a USB is connected.</i></p>
<p>4 Save Strain Data</p>	<p>Saves the strain data. When you retrieve a saved image, the strain result will be displayed as well.</p>
<p>5 Assign to Report</p>	<p>Strain+ result is assigned to report.</p>

- The features mentioned in this document may not be commercially available in all countries. Due to regulatory reasons, their future availability cannot be guaranteed.
- Do not distribute this internal document to customers unless relevant regulatory and legal affairs officers approve such distribution.
- This product is a medical device, please read the user manual carefully before use.
- This document is provided to help you understand the feature.
- This Use Quick Guide is based on V8 V1.06.
- Disclaimer: Some Images in this content were obtained from other system.

SAMSUNG MEDISON CO., LTD.

© 2024 Samsung Medison All Rights Reserved.

Samsung Medison reserves the right to modify the design, packaging, specifications, and features shown herein, without prior notice or obligation.