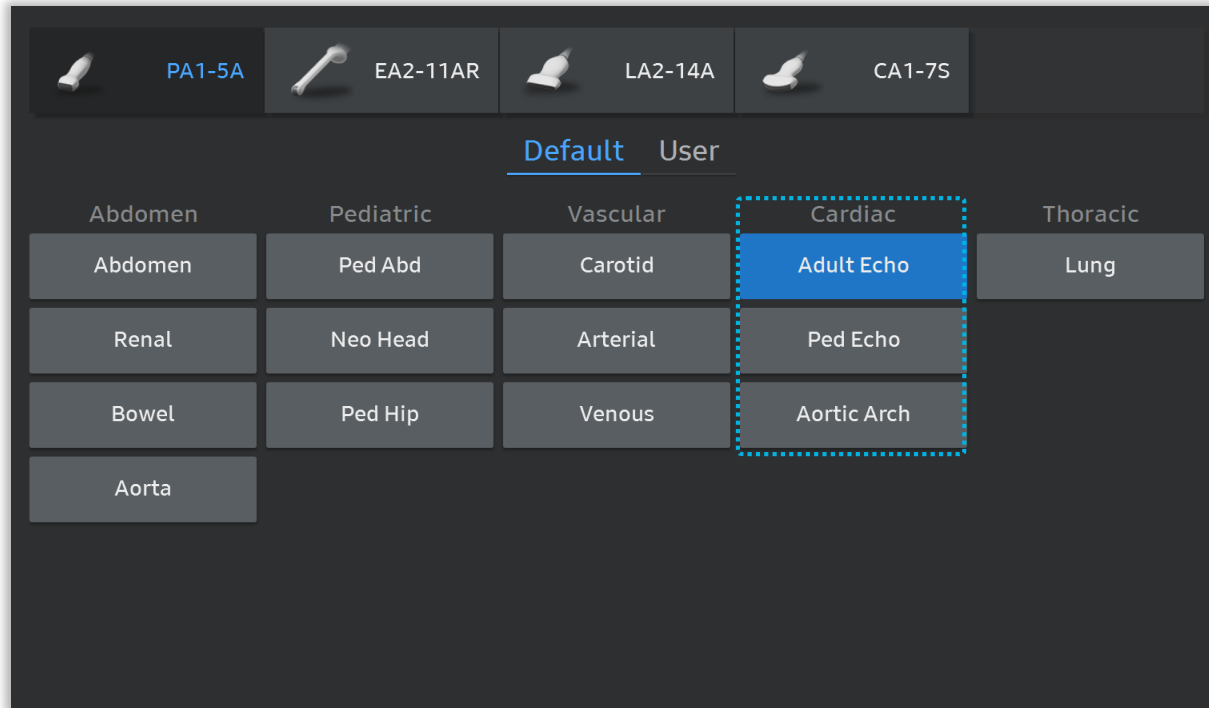


Strain+ LA

V series Quick Guide



1. Probe and Preset

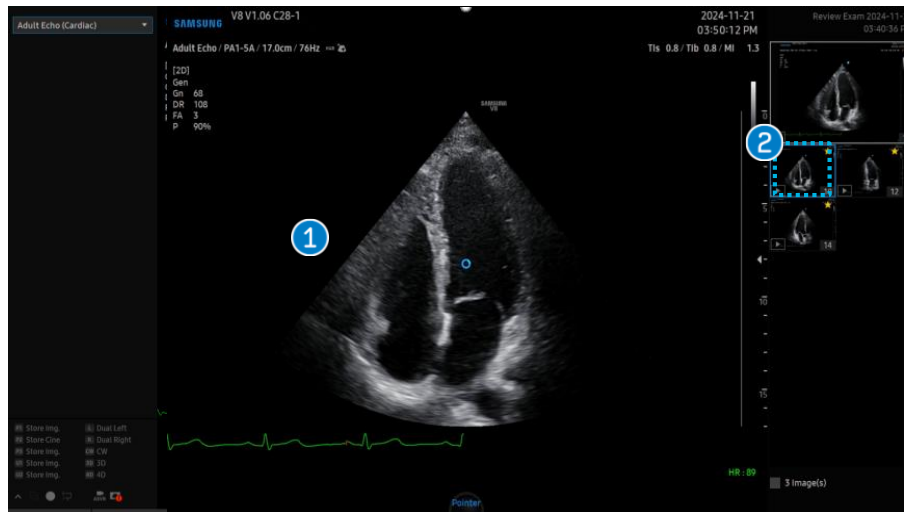


※ Available application and preset

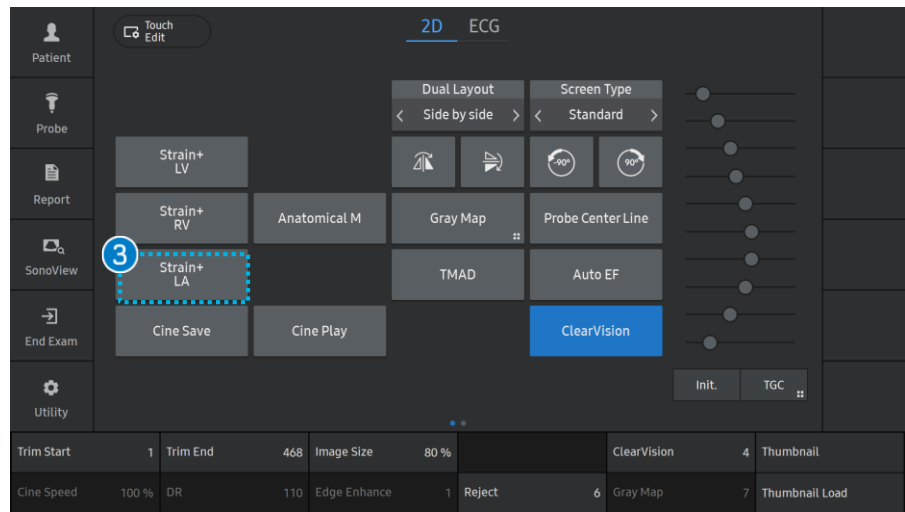
Application	Cardiac
Preset	Adult Echo, Ped Echo, Aortic Arch
Mode	2D
ECG Heart rate	30~240

Strain+ LA

2. Start LA Strain



- 1 Image scan & Save** Scan and save images from the apical 2- and 4-chamber views for LA strain analysis.
- 2 Select image** Select either the apical 2-chamber (A2C) or apical 4-chamber (A4C) view
- 3 Select Strain+LA** Select **[Strain+ LA]** button on the touch screen to start.
- 4 Contouring Varification** Verify that the auto contouring has accurately traced the LA wall.



Strain+ LA

3. Calculate and verification

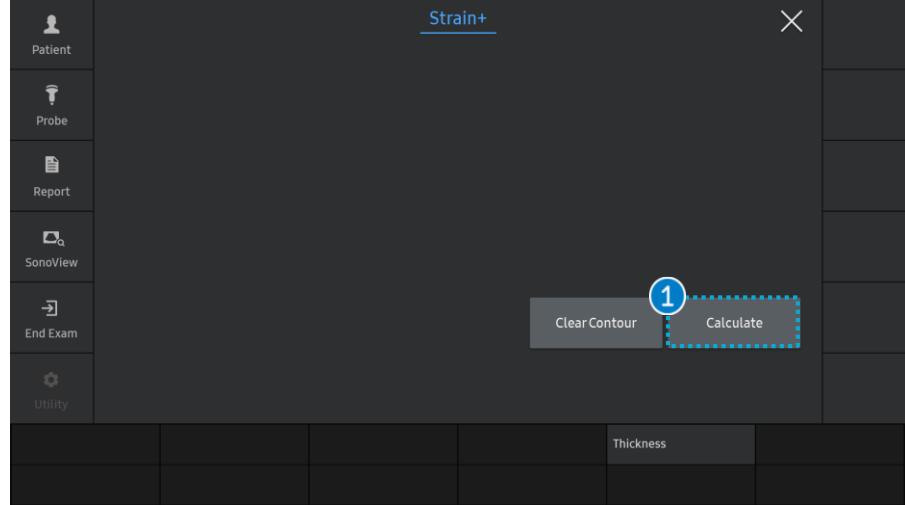


- 1 Calculate**

Select a 2D cine from the thumbnail list. -> Select [Strain+ LA] button on the touch screen.

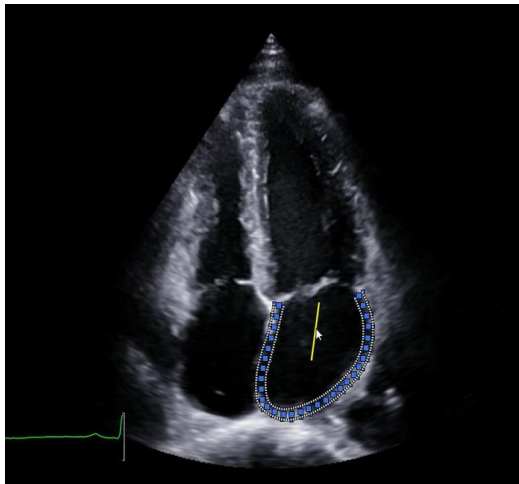
* AI-powered automatic LA contouring is performed.
- 2 Contouring Verification**

Verify that the auto contouring has accurately traced the LA wall.



4. Editing RV Contour

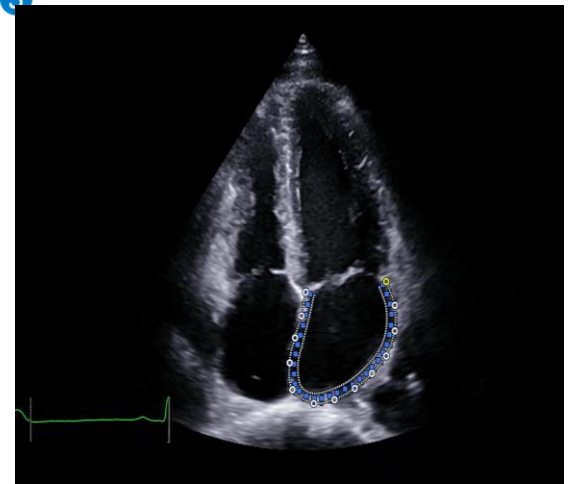
1



2



3



※ If border editing is needed, please following as the below.

1 Total contour

When you place the Pointer near center of LA, a yellow bar will be appear
 → Press the **[Set]** button to edit the contour line by using the trackball.
 → Press the **[Set]** button again to confirm.

2 Endocardial point edit

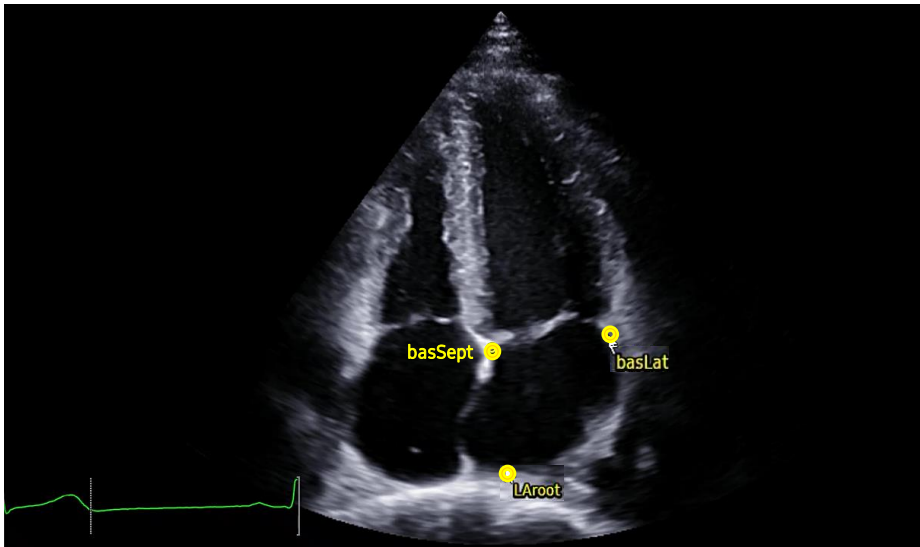
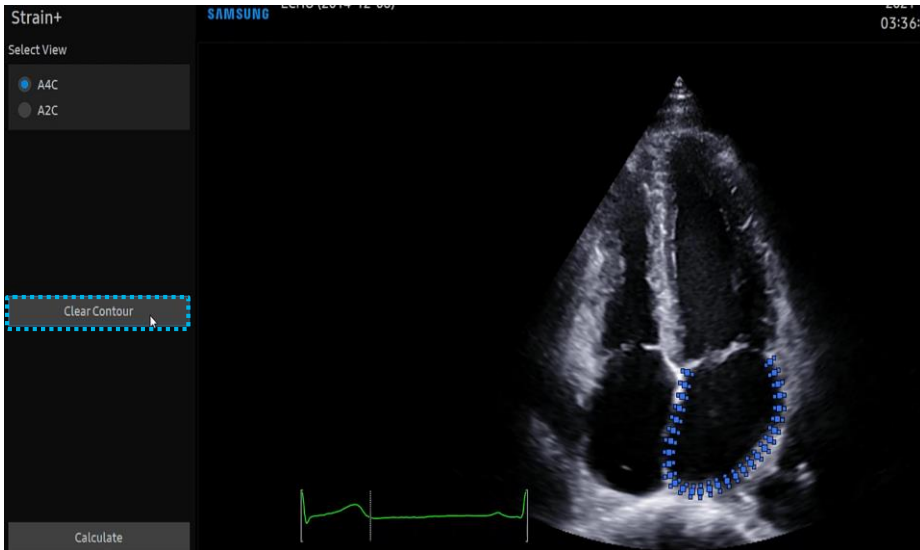
When you place the Pointer close to the endocardial tracking point, the endocardial border line will change to yellow points. → Press the **[Set]** button to edit the points of the line that needs to be modified. → Press the **[Set]** button again to confirm.

3 Epicardial point edit

When you place the Pointer close to the epicardial tracking point, the epicardial border line will change to yellow points. → Press the **[Set]** button to edit the points of the line that needs to be modified → Press the **[Set]** button again to confirm.

5. Clear Contour

※ In addition to the auto contouring method, the LA strain can be performed using the 3-point method by manually placing points.



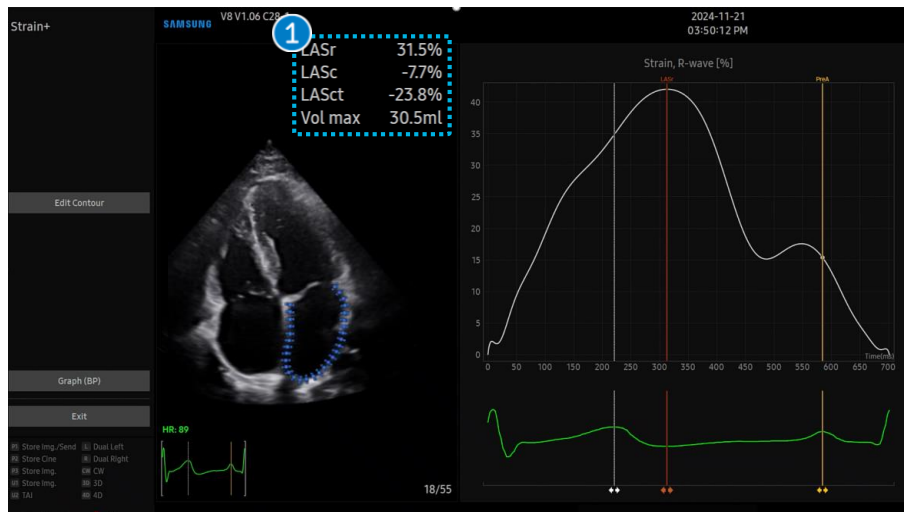
- | | |
|-------------------------|--|
| ① Clear Contour | Delete all set points or contour lines. |
| ② LA 3points of contour | Specify 3 points contour on LA. Use the trackball and the [Set] button to specify 3 points in order, basSest, basLat and LAroot. |

★Tips

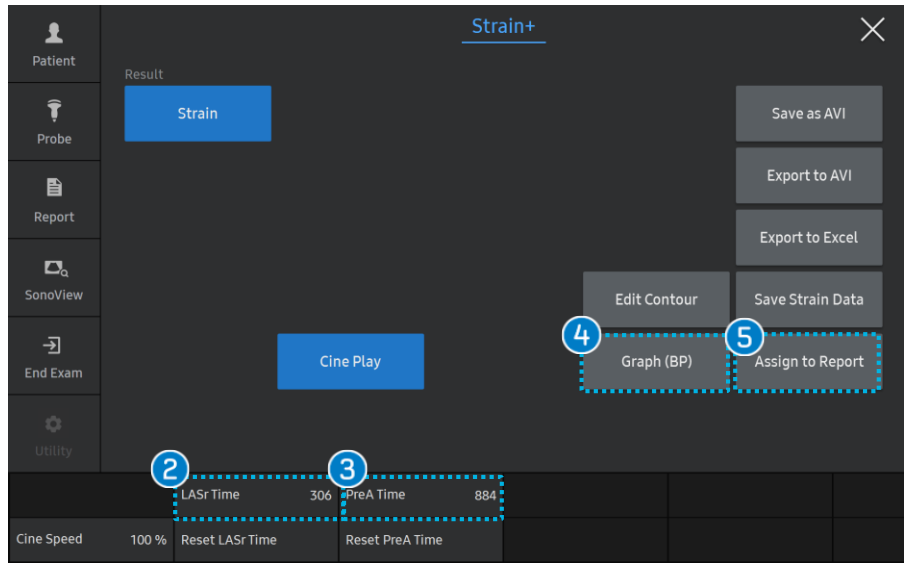
Once the contour line setup for the relevant view is completed, select [Calculate] button to calculate the current view.

Strain+ LA

7. Result Display



1 LA Strain result	<ul style="list-style-type: none"> LASr: Reservoir Strain LASc: Conduit Strain LASct: Contraction Strain Vol max: LA maximal volume
2 LASr Time	Adjust LASr time
3 PreA Time	Adjust PreA time
4 Assign to Report	Strain+ result is assigned to report.
5 Graph(BP)	Biplane graphs of LA2C and 4C and calculate and display the resulting values.

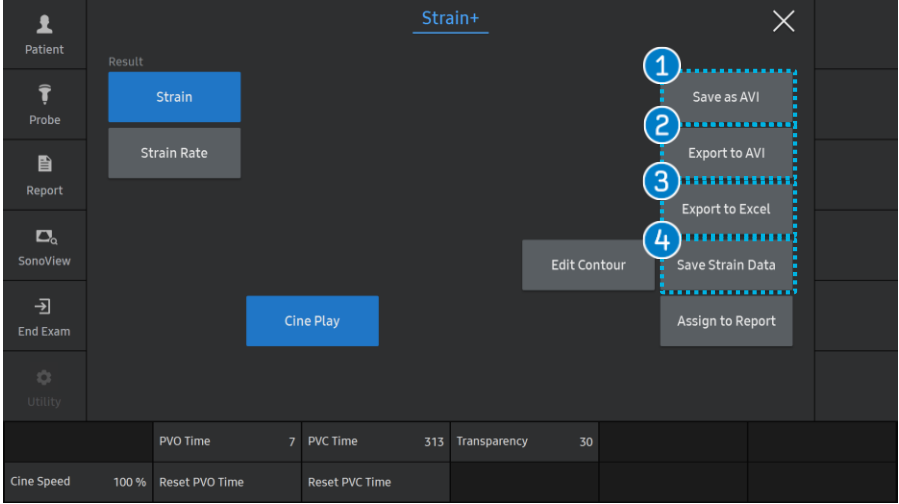


★Tips

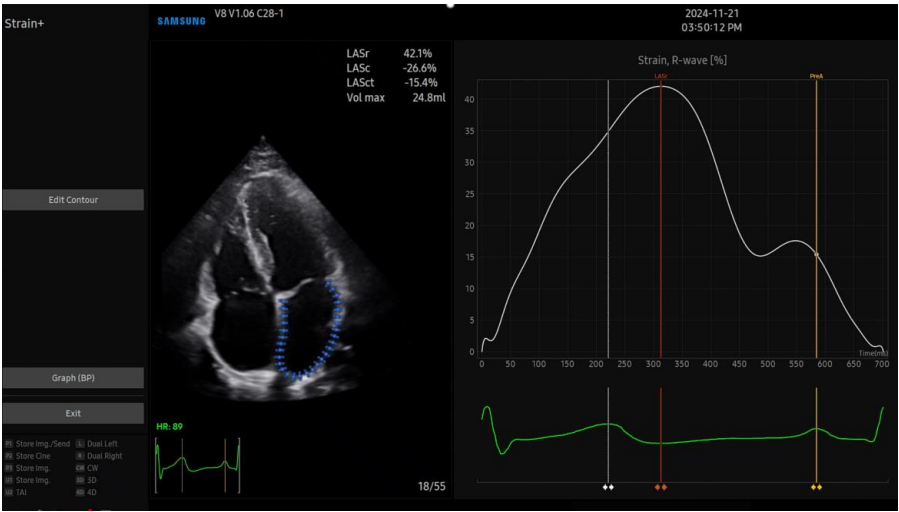
To review the bi-plane value of LA strain, first calculate either 2-chamber or 4-chamber and press **[Assign to Report]**. Then Calculate the remaining chambers and then tap **[Graph(BP)]** on the touch screen to view the bi-plane results.

Strain+ LA

8. Total strain result



1 Save as AVI	Saves the result with a captured screen as an AVI file.
2 Export to AVI	Exports the result and the representative image as an AVI file. * This is only available if a USB is connected.
3 Export to Excel	Save the result and the representative image as an Excel file. * This is only available if a USB is connected.
4 Save Strain Data	Saves the strain data. When you retrieve a saved image, the strain result will be displayed as well.



SAMSUNG

- * The features mentioned in this document may not be commercially available in all countries. Due to regulatory reasons, their future availability cannot be guaranteed.*
- * Do not distribute this internal document to customers unless relevant regulatory and legal affairs officers approve such distribution.*
- * This product is a medical device, please read the user manual carefully before use.*
- * This document is provided to help you understand the feature.*