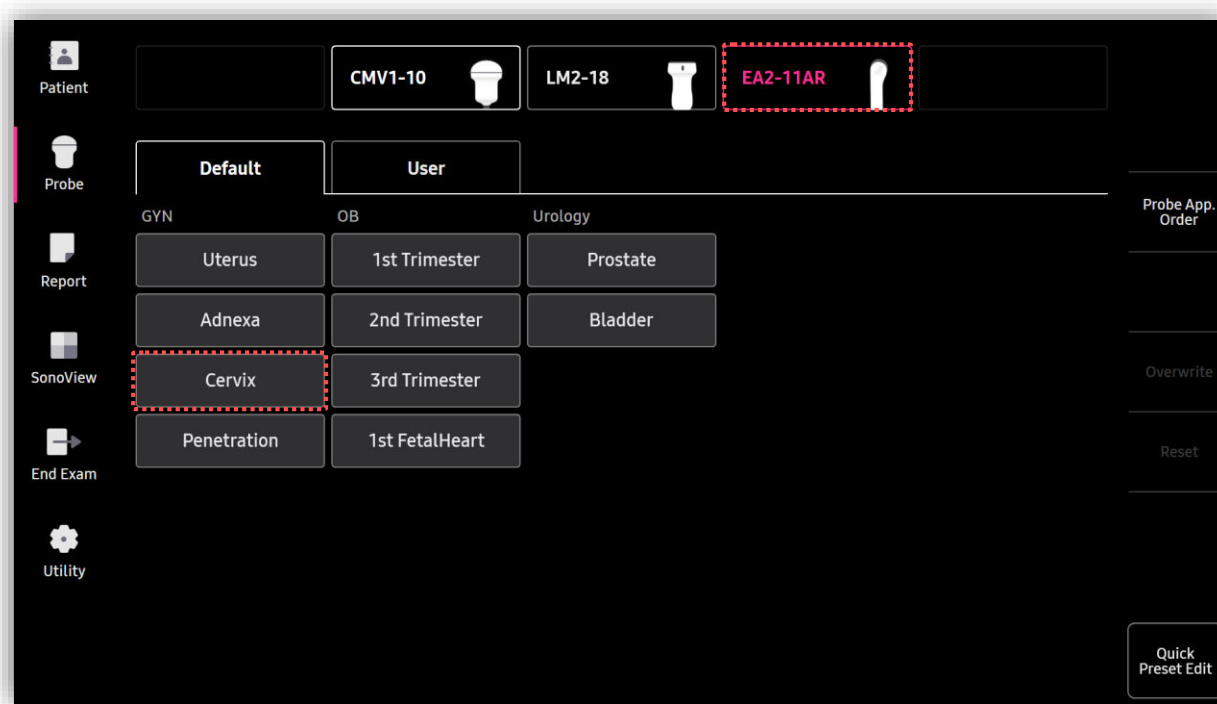


E-Cervix™

HERA Z20 Quick Guide



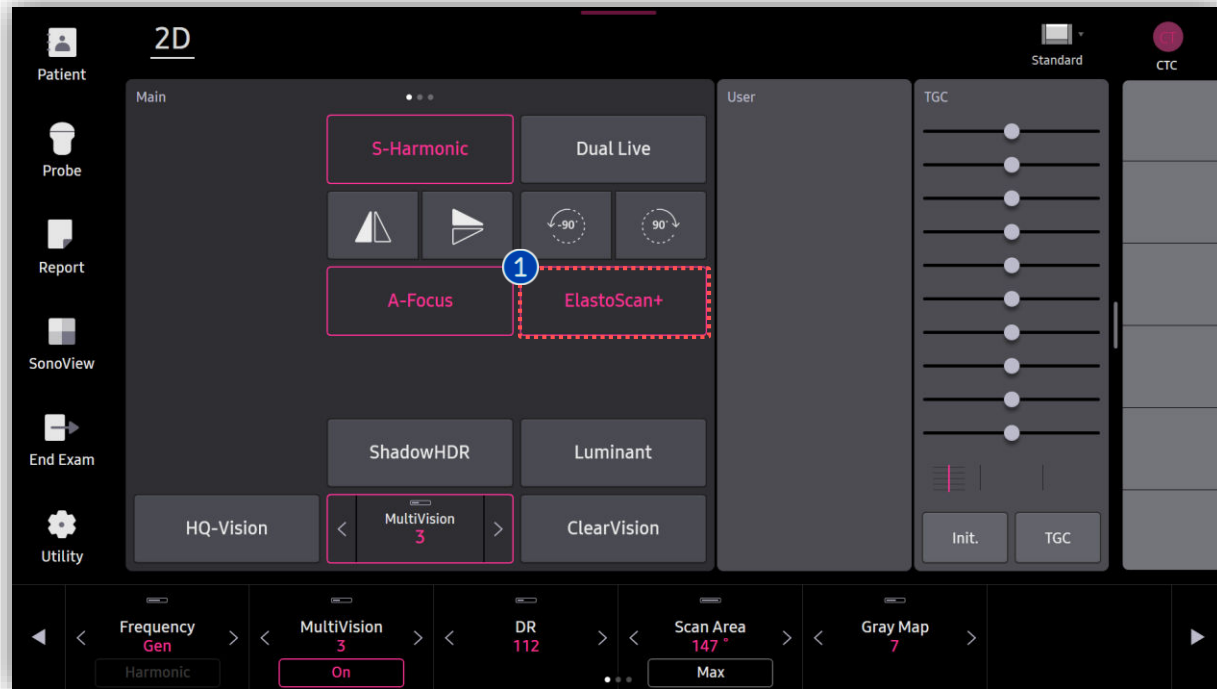
1. Probe and Preset



※ E-Cervix can be operated under the following conditions :

Probe	Application
EV2-12 EA2-11AR EA2-11AV	Gynecology(E-Cervix)

2. Start ElastoScan+

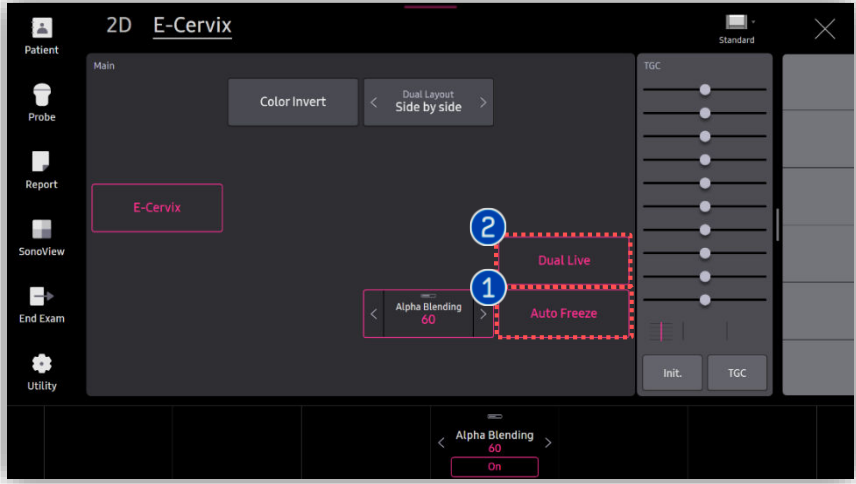


1 Elastoscan+

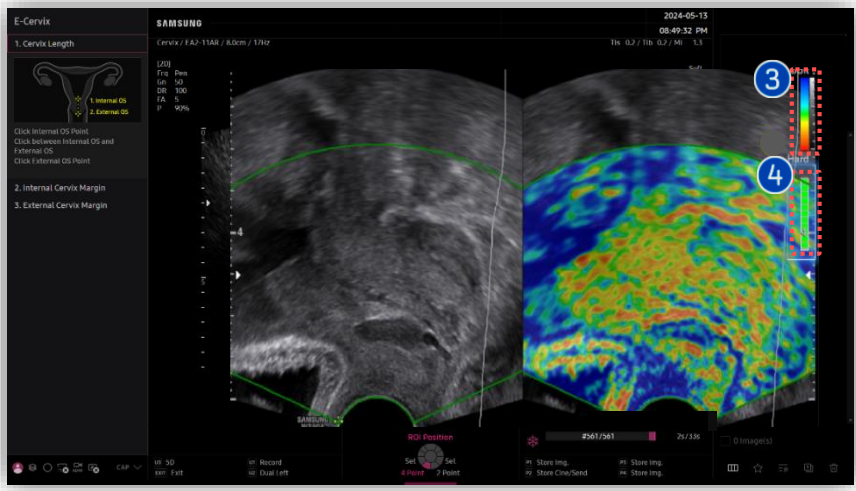
Obtain a longitudinal midline section of the cervix and then select Elastoscan+.

E-Cervix™

3. Indicators of ElasoScan+

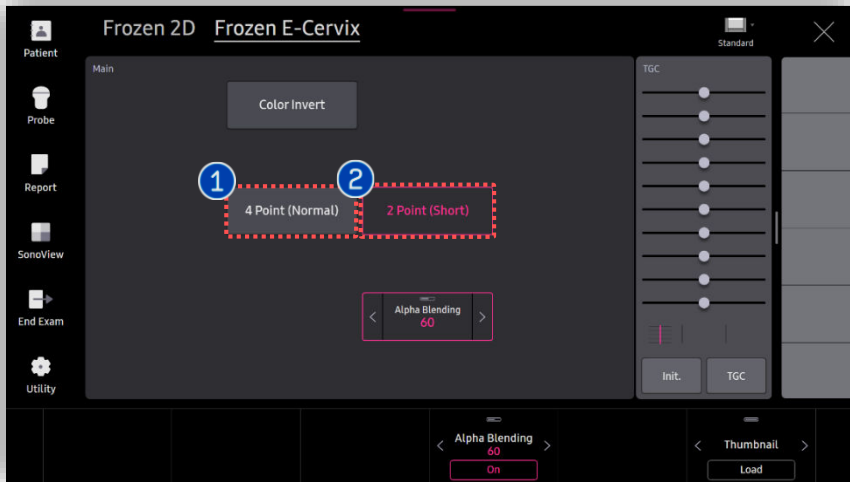


1 Auto Freeze	On	System would be automatically frozen when [Motion Guide Bar] is fully filled with green.
	Off	System would not be automatically frozen even [Motion Guide Bar] indicates that the acquired data is reliable which means manual freeze is needed.
2 Dual Live	Option of display type. Select [Dual Live] for larger size image of E-Cervix.	



3 Color map	Tissue stiffness indication bar. (Blue : Soft / Red : Hard)	
4 Motion Guide Bar	When acquired data is reliable, entire motion guide bar turns from yellow to green.	

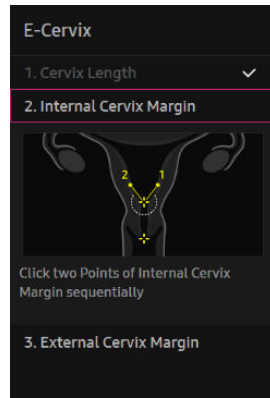
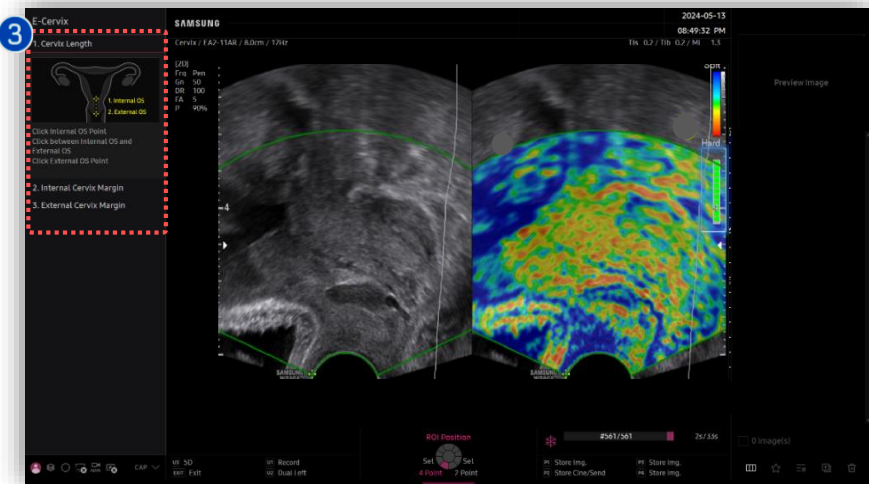
4. Choose a type of ROI option



<p>1 4 Point ROI</p>	<p>Use 4 point type incase of long cervix length.</p>
<p>2 2 Point ROI</p>	<p>Use 2 point type incase of short cervix length.</p>

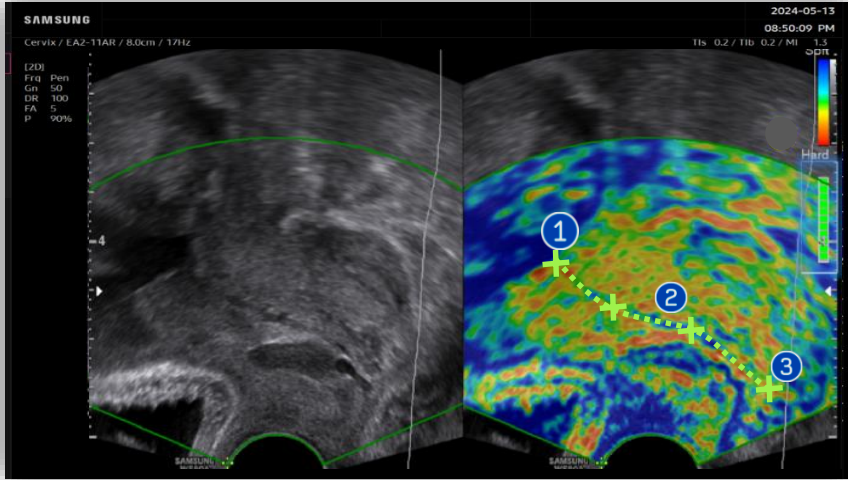
★ Tips

There are two types of ROI option between [4 Point] and [2 Point]. Select proper option depends on the patient's cervical length and shape.



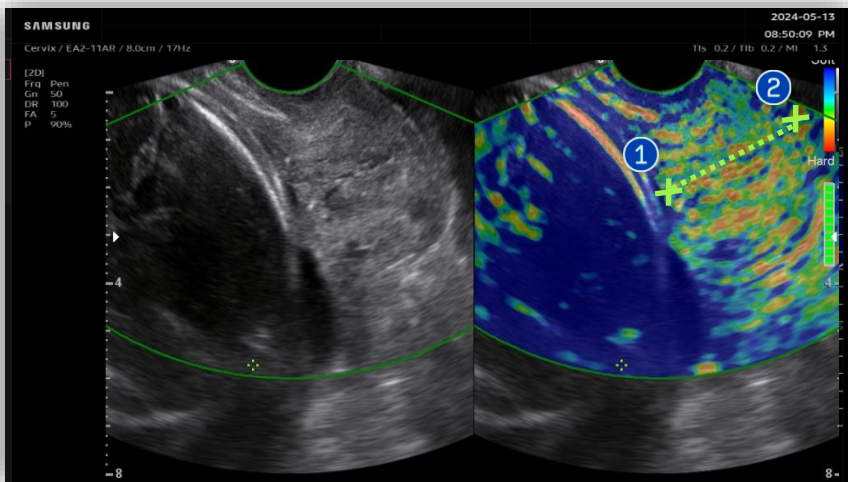
<p>3 E-Cervix Guide</p>	<p>To specify ROI location, follow the steps on the left top.</p>
-------------------------	-------------------------------------------------------------------

5. Set IOS and EOS



[4 Point Type]

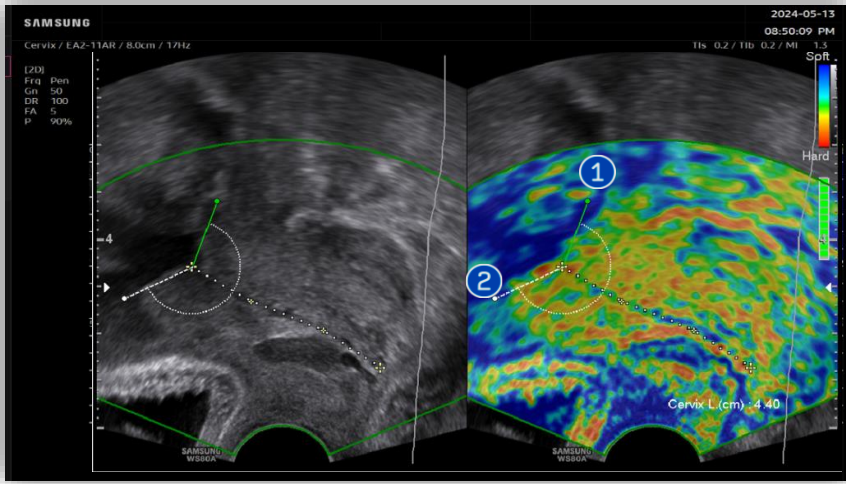
- 1 Click on the internal OS.
- 2 Click two points between IOS and EOS along the length of the cervical canal.
- 3 Click on the External OS.



[2 Point Type]

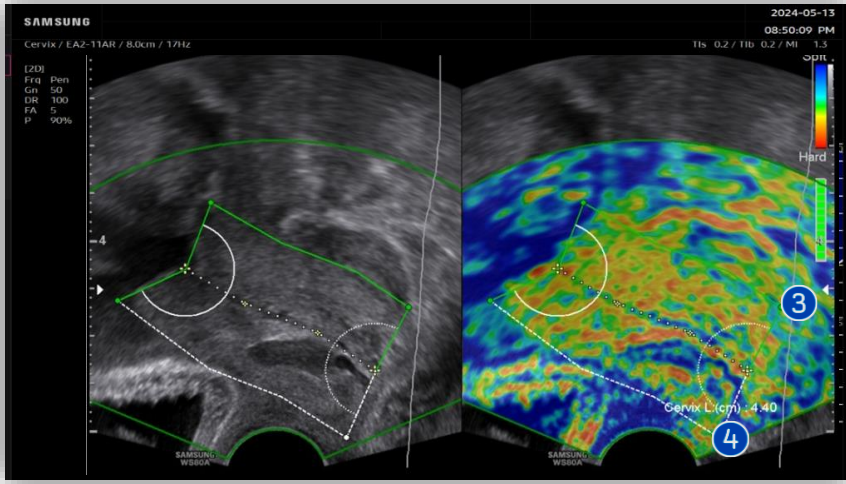
- 1 Click on the internal OS.
- 2 Click on the External OS.

6. Set margin of Cervix



1 Once internal OS point is assigned, a green line will be activated from Internal OS area. To specify internal OS margin, adjust activated line to fit within the border of the cervix and press [Set] to fix.

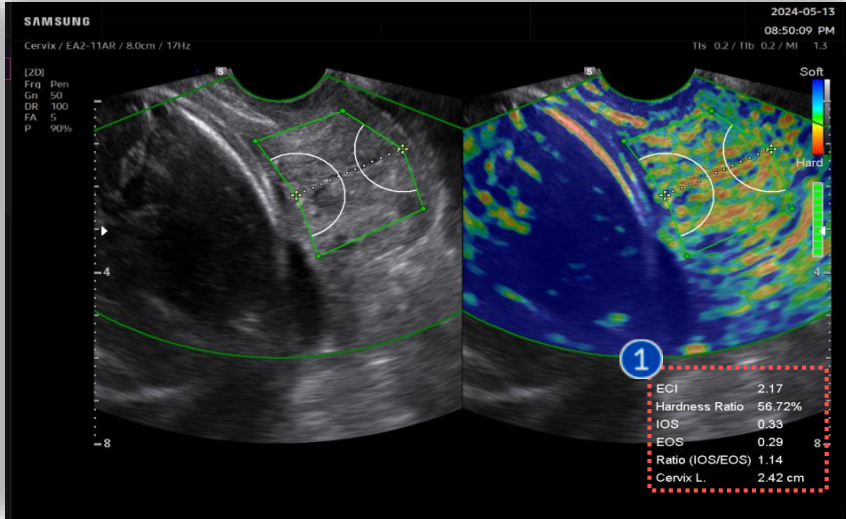
2 A new line will appear on the opposite side of the cervix. Adjust the line to fit the border of the cervix and [Set] to fix.



3 After defining internal OS margin, adjust the line from the External OS and [Set].

4 Adjust opposite line on the other side of external OS margin and [Set] to fix.

7. Results of E-Cervix™



1 Result

After all points are placed, result box will come up at bottom right.

★ Tips

After drawing along the cervical line, the Cervical Length will be automatically displayed at the bottom right.

2	ECI	1.93
3	Hardness Ratio	60.41%
4	IOS	0.29
5	EOS	0.30
6	Ratio (IOS/EOS)	0.97
	Cervix L.	2.17 cm

[Monitor Screen]

1 ECI

Elasticity Contrast Index.

2 Hardness Ratio

Percentage of area, strain under 0.3. Can evaluate overall cervix stiffness.

3 IOS

Mean strain level (0~ 1) within 1cm from internal OS.

4 EOS

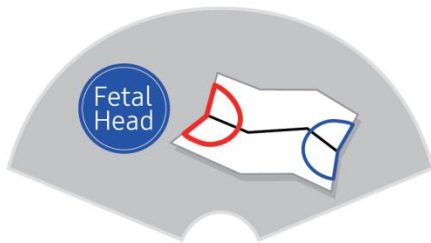
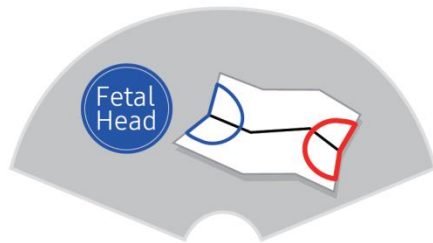
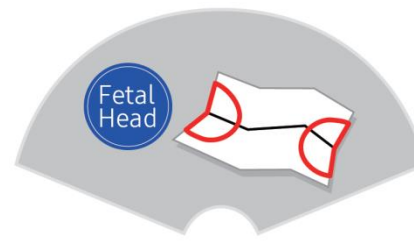
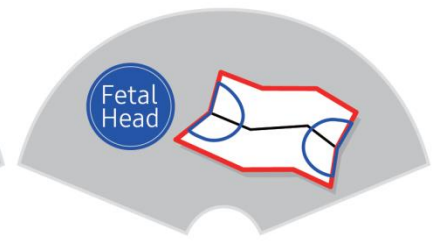
Mean strain level (0~ 1) within 1cm from external OS.

5 Ratio

Ratio between internal OS and external OS.

8. E-Cervix™ parameters description

Measurement Parameters	Description
IOS ¹ strain mean Level	<ul style="list-style-type: none"> Strain mean level in IOS¹ area Value range: 0 (hard) - 1 (soft)
EOS ² strain mean Level	<ul style="list-style-type: none"> Strain mean level EOS² area Value range: 0 (hard) - 1 (soft)
Ratio (IOS ¹ /EOS ²)	<ul style="list-style-type: none"> IOS¹ strain level/EOS² strain level
ECI ³	<ul style="list-style-type: none"> ECI³ represents how much heterogeneity or homogeneity is inside of the nodule within ROI box Value range: 0 (homogeneity) - 81 (heterogeneity)
Hardness Ratio	<ul style="list-style-type: none"> 30% hardness area in cervix ROI, value range: 0 (soft) - 100% (hard)

IOS¹EOS²IOS¹/EOS² ratioHardness ratio, ECI³

- The features mentioned in this document may not be commercially available in all countries. Due to regulatory reasons, their future availability cannot be guaranteed.
- Do not distribute this internal document to customers unless relevant regulatory and legal affairs officers approve such distribution.
- This product is a medical device, please read the user manual carefully before use.
- This document is provided to help you understand the feature.
- This User Quick Guide is based on HERA Z20 V1.00
- Disclaimer: Some Images in this content were obtained from other system.

SAMSUNG MEDISON CO., LTD.

© 2024 Samsung Medison All Rights Reserved.

Samsung Medison reserves the right to modify the design, packaging, specifications, and features shown herein, without prior notice or obligation.