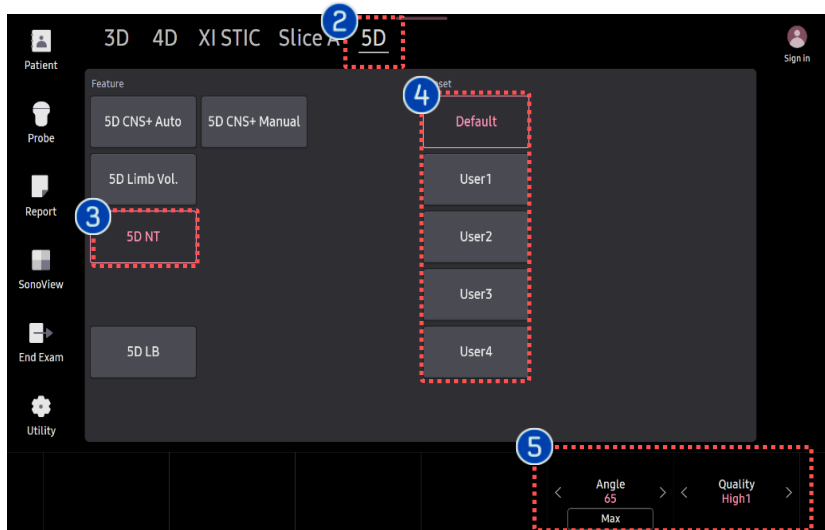


5D NT™

HERA Z20 Quick Guide



1. Activate 5D NT (Before 3D Acquisition)



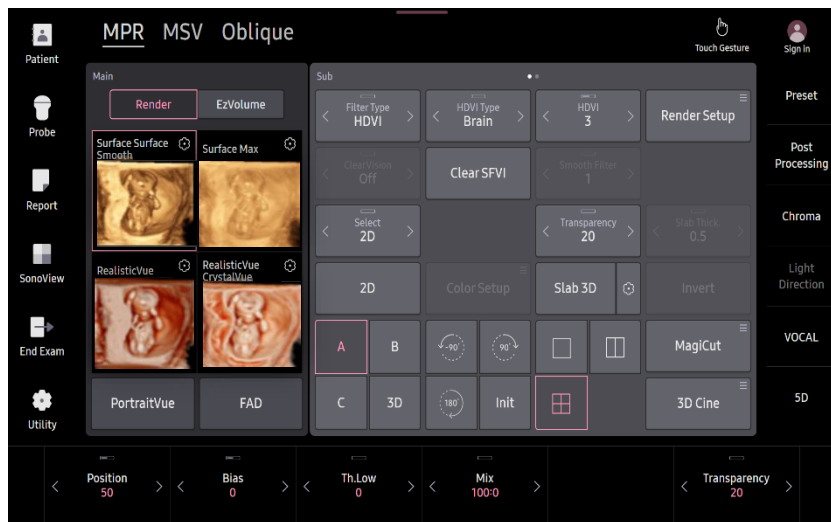
①	3D Button	Press [3D] button on the control panel.
②	5D Ready	Tap [5D Ready] on the touch panel.
③	5D NT	Tap [5D NT] to activate 5D NT™.
④	Preset	Select preferred preset between default and users. Each 5D feature could have own preset parameters.
⑤	Parameters	[Angle] and [Quality] are customizable.
⑥	Volume acquisition	Find fetal NT on sagittal plane as clear as possible.

★ Tips

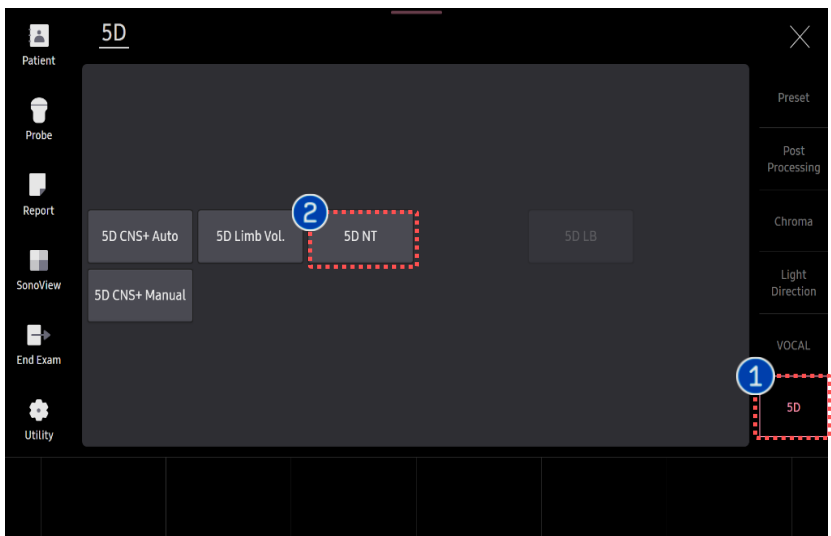
For more accurate NT evaluation, follow NT measurement guide-line created by FMF (Fetal Medicine Foundation).

5D NT™

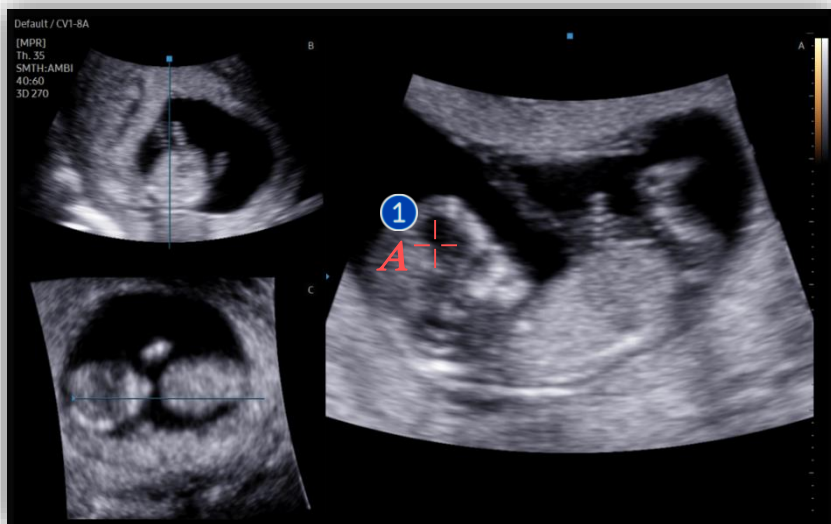
2. Activate 5D NT (After 3D Acquisition)



- | | | |
|---|-------|--|
| 1 | 5D | Tab to activate [5D] features. |
| 2 | 5D NT | Tab [5D NT] button to activate 5D NT™. |



3. Set cursor at Diencephalon



① Seed Point

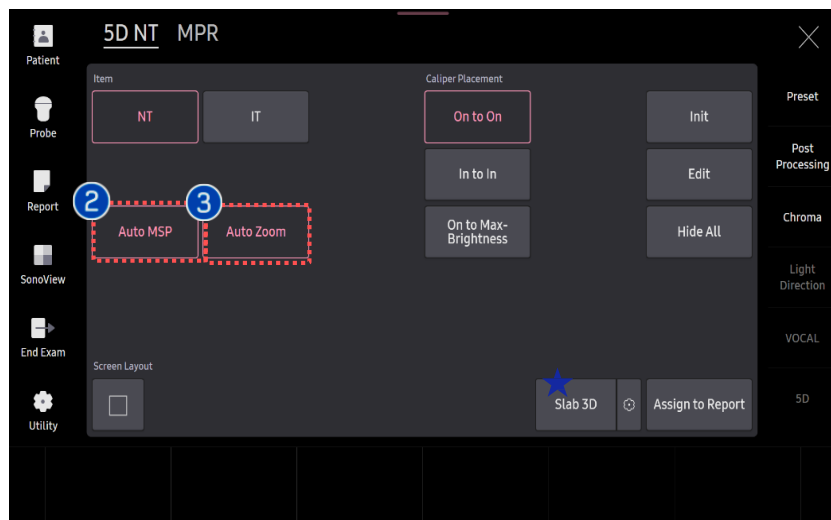
Set [A] cursor on fetal diencephalon. Then system automatically finds true mid-sagittal plane.

② Auto MSP

In case of incorrect mid-sagittal plane, turn off [Auto MSP] so that you will set the cursor on Diencephalon once again.

③ Auto Zoom

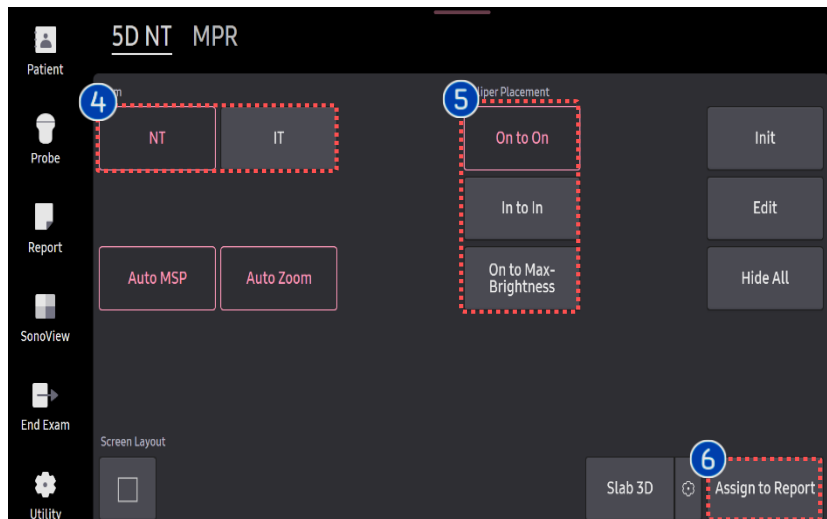
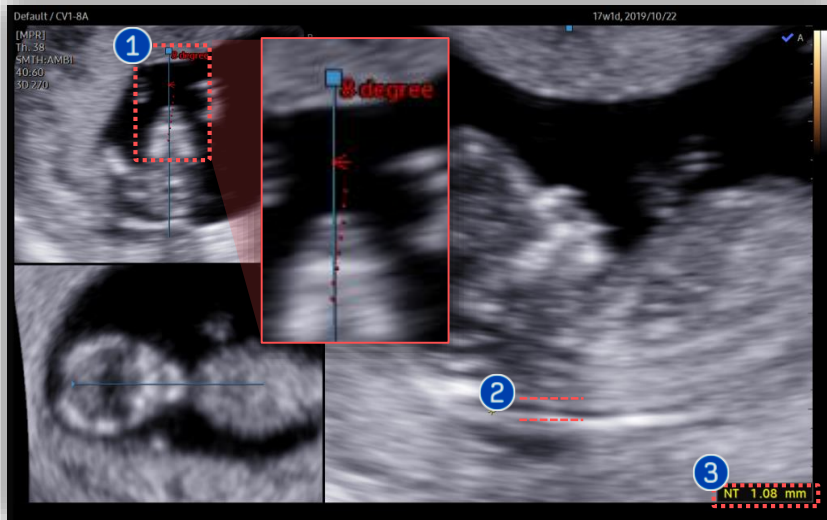
When it is turned on, it automatically magnifies the image.



★ Tips

Slices of a 3D image will be displayed as images rendered in 3D. You may select [Slab 3D Type] among Surface, X-ray, Max and Min.

4. Measure NT or IT



① Angle	Angle difference from initial acquisition. <ul style="list-style-type: none"> Blue Solid Line : MSP angle Red Dotted Line : Initially acquired angle
② Caliper Set	Place caliper on fetal NT or IT depending on selection of item.
③ Result	Measurement result at the maximum distance of NT or IT.
④ Item	Select type of item between NT and IT
⑤ Caliper Placement	Select type of caliper placement among "On to On", "On to Max Brightness", and "In to In".
⑥ Assign to Report	Tap to apply calculated result to the report.

- The features, options may not be commercially available in some countries.
- Sales and shipments are effective only after the approval by the regulatory affairs. Please contact your local sales representative for further details.
- This Quick guide does not include all of the details of instruction, for more detail, please refer to HERA Z20 User Manual.
- Do not distribute this document to customers unless relevant regulatory and legal affairs officers approve such distribution.
- This User Quick Guide is based on HERA Z20 V1.00.
- Disclaimer: Some Images in this content were obtained from other system.

SAMSUNG MEDISON CO., LTD.

© 2024 Samsung Medison All Rights Reserved.

Samsung Medison reserves the right to modify the design, packaging, specifications, and features shown herein, without prior notice or obligation.