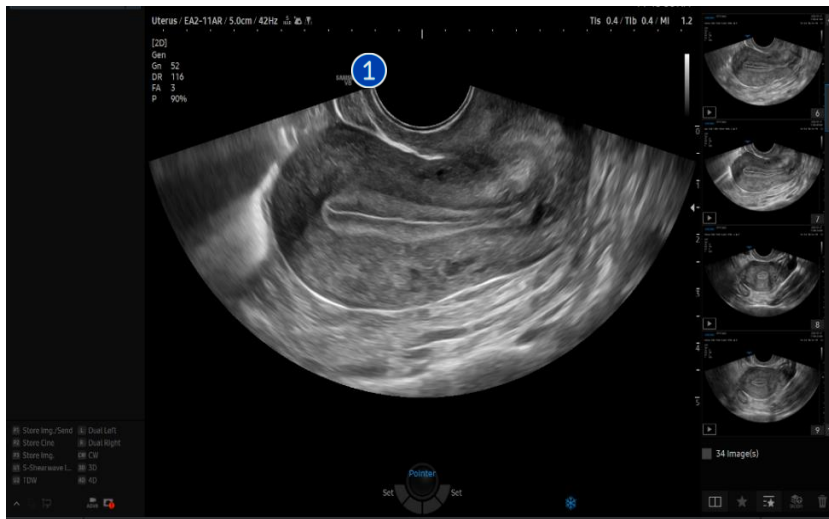


UterineAssist™

HERA Z20 Quick Guide



1. Start UterineAssist™



1 Image Acquisition

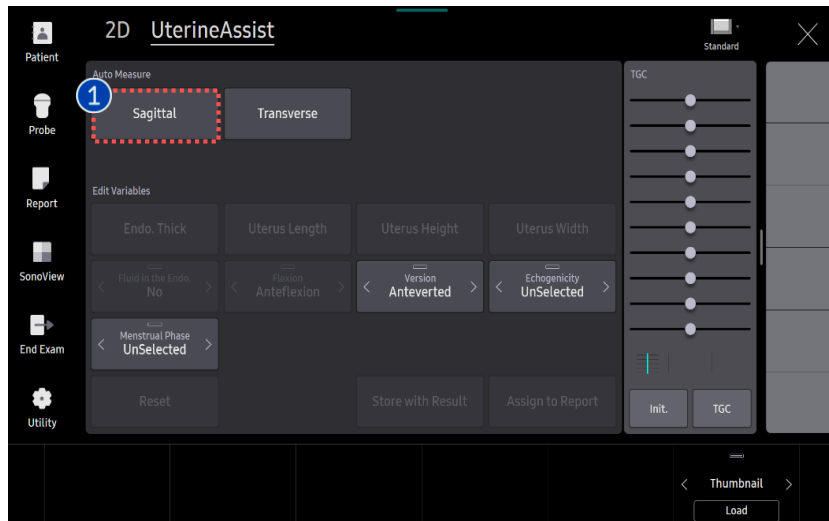
Acquire the sagittal or transverse image of the uterus in 2D mode and press the [Freeze] button.

2 Start UterineAssist

Tap [UterineAssist] button on the touch screen to start.



2-1. Measure on Sagittal Plane



1 Sagittal

Tap [Sagittal] button to make auto measurement.

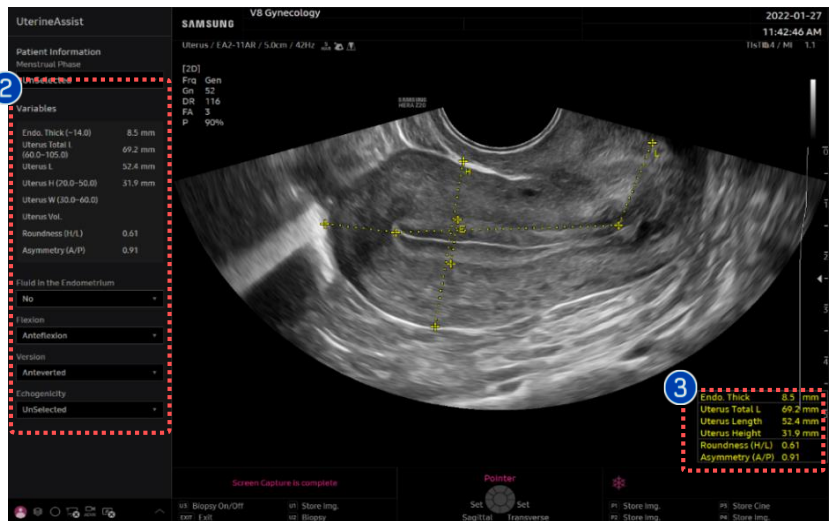
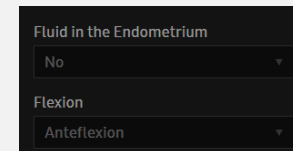
Measured data is displayed on the left column.

Additionally, the following are shown:

- [Fluid in Endometrium]: the presence or absence of fluid in the endometrium.

2 Variables

- [Flexion]: type is automatically presented.

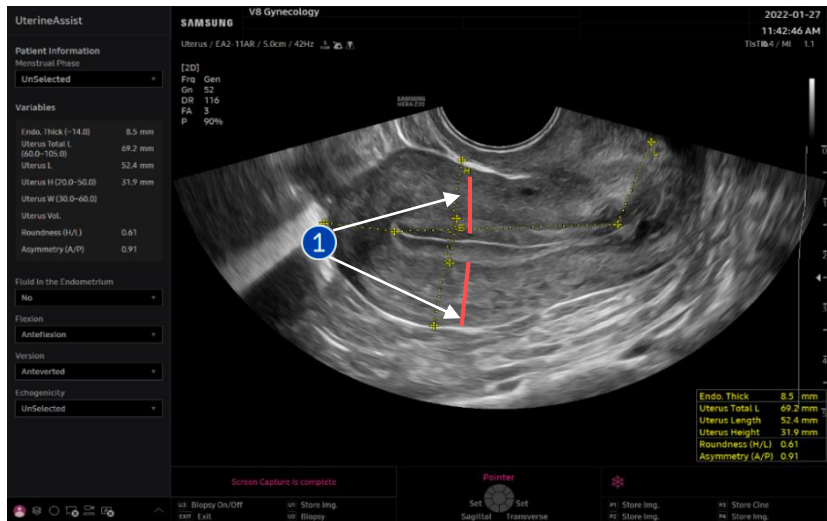


3 Result

You will get the value of [Endo.Thick], [Uterus Total L], [Uterus Height], [Roundness (H/L)] and [Asymmetry (A/P)].

- [Uterus Total L]: Uterus Body + Cervix Length
- [Uterus L]: Uterus Body Length

2-2. Edit the result on sagittal plane

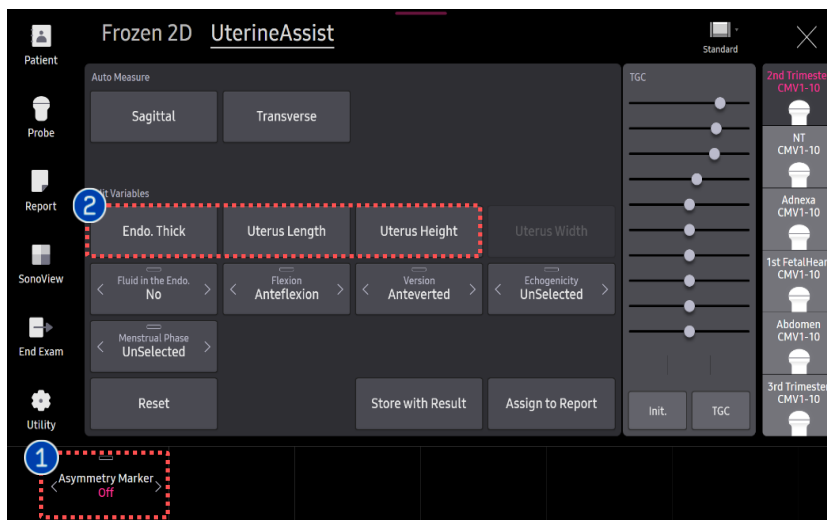
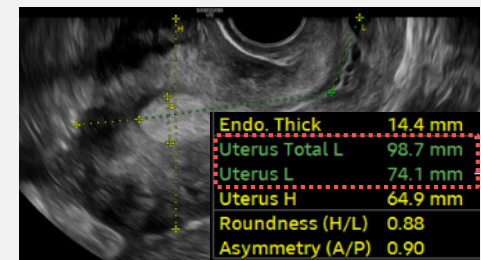


1 Asymmetry Marker

It shows the line of anterior and posterior myometrium wall which were used to calculate the Asymmetry ratio (A/P).

- Endo.Thick, Uterus Length, Uterus Height
- Please tap the button of each item to revise the measurement.
- Measure line will be colored as green.
- You can select the start point by CP's change key and assign it by Set key.

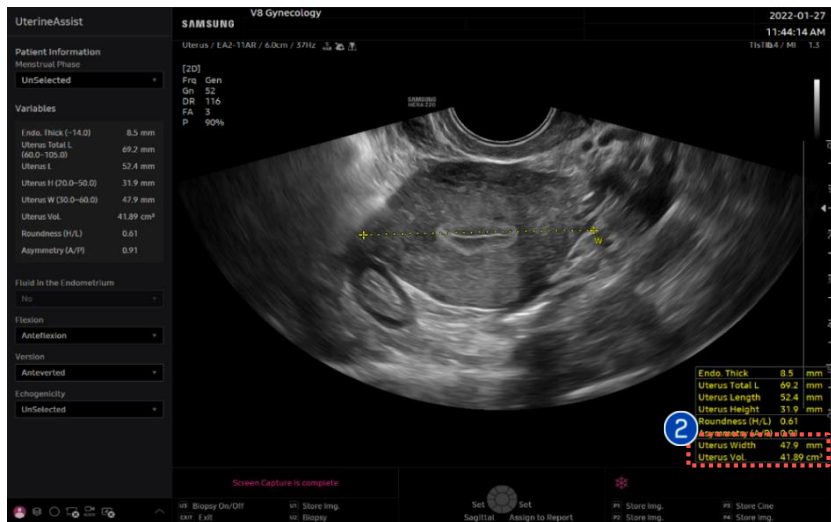
2 Edit result value



★ Tips

[Uterus Width] allows revision after measuring it on the transverse plane.

3. Measure on Transverse plane



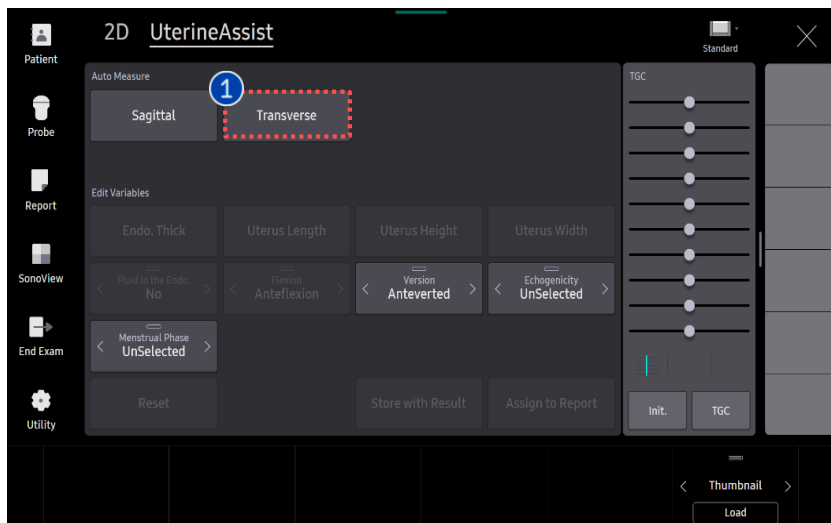
1 Auto Meas. Transverse

Tap [Auto Meas.Transverse] button to make auto measurement.

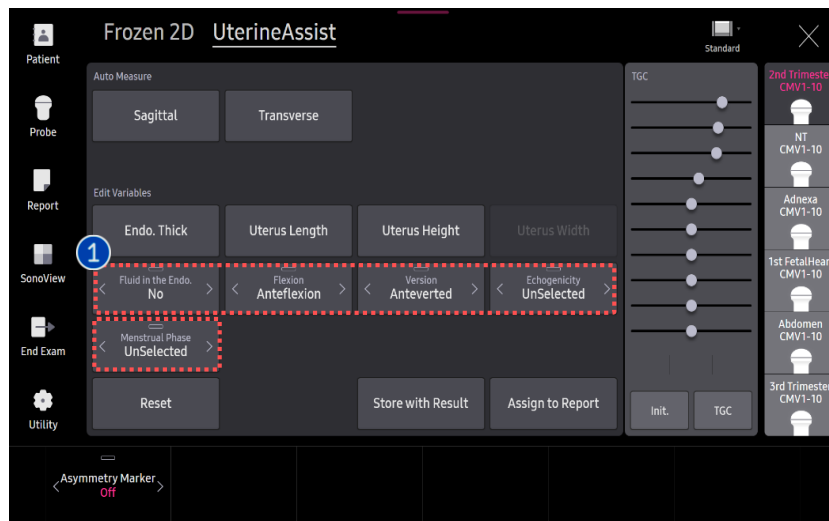
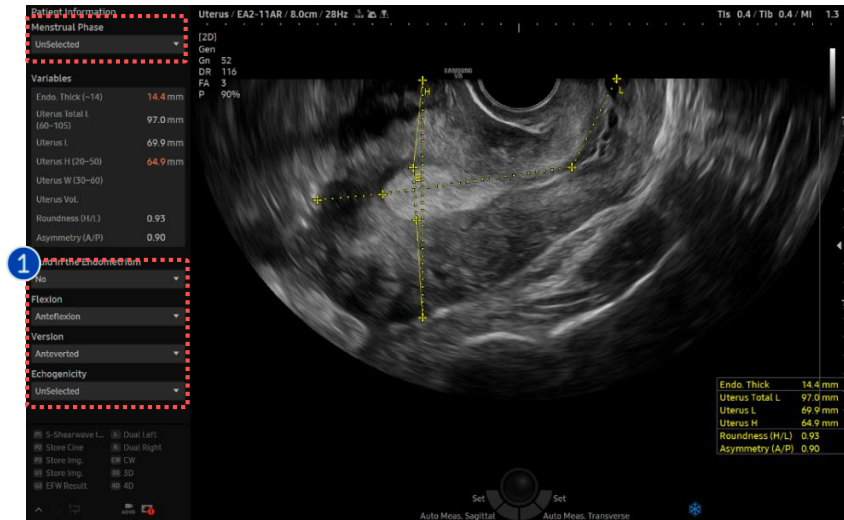
Endo. Thick	9.4	mm
Uterus Total L	83.0	mm
Uterus L	62.7	mm
Uterus H	38.4	mm
Roundness (H/L)	0.61	
Asymmetry (A/P)	0.86	
Uterus W	45.3	mm
Uterus Vol.	57.18	cm ³

2 Result

You will get the [Uterus W] on transverse view.
 [Uterus Vol.] will be presented additionally if you have a [Uterus L] and [Uterus H] from sagittal view in advance.



4. Edit the Variables



- Fluid in the Endo. (Automated item)
You can select "Yes" or "No".
- Uterus Position
 - 1) Flexion (Automated item)
 - You can update it. 3 items are provided as follows : Anteflexed, Retroflexed, Flat
 - 2) Version (Manual update is required)
 - Anteversion, Retroversion are provided as option.
Anteversion is selected as default.
- Echogenicity (Manual update is required)
 - Homogeneous, Heterogeneous are provided as option.
- Menstrual Phase (Manual update is required)
 - Menstrual Period, Early Proliferative, Perioovulatory, Secretory, Post Menopause are provided as option.
 - Uterus size (L/W/H) standard is different between Post Menopause and the others.

1 Edit Variables

★ Tips

[Fluid in the Endo] and [Flexion] are presented on sagittal plane.

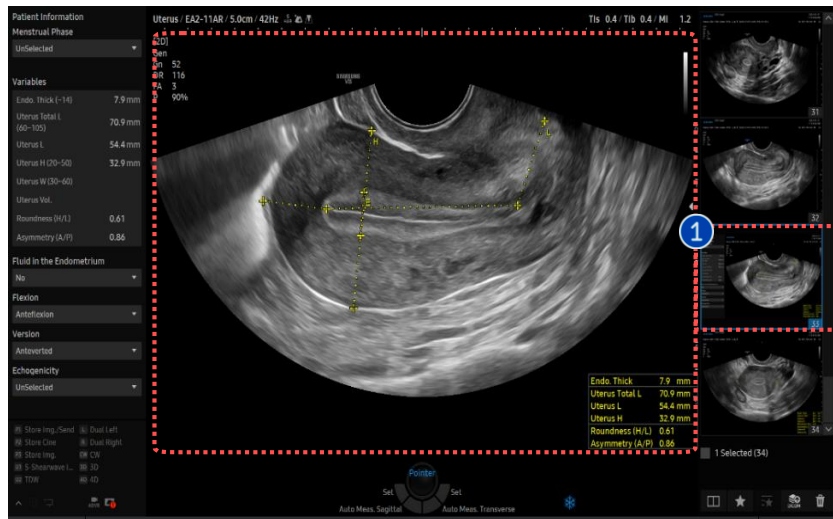
6. Interpretation

Patient Information		
Menstrual Phase		
UnSelected		
Variables		
Endometrium (~14)	8.0	mm
Uterine Total L (60~105)	74.9	mm
Uterine L	52.0	mm
Uterine H (20~50)	48.1	mm
Uterine W (30~60)	53.2	mm
Uterine Vol.	69.64	ml
Roundness (H/L)	0.92	
Asymmetry (A/P)	0.92	
Fluid in the Endometrium		
No		
Flexion		
Anteflexion		
Version		
Anteverted		
Echogenicity		
UnSelected		

Patient Information	Menstrual Phase	Unselected / Menstrual Period / Early Proliferative / Perioovulatory / Secretory / Post Menopause
---------------------	-----------------	---

Variables			
Anatomy & Feature	Term	Measurement	Auto /Manual
Endometrium	Endometrium	Endometrium thickness in sagittal view	Auto
Uterine corpus and cervix	Uterine Total L	Total length = d1 + [Cervix]	Auto
Uterine Corpus	Uterine L	(d1) Length = [fundus] + [cavity]	Auto
	Uterine H	(d2) Anteroposterior diameter	Auto
	Uterine W	(d3) transverse diameter	Auto
	Uterine Vol.	Volume(cm ³) = d1(cm)Xd2(cm)Xd3(cm) X 0.523	Auto
Uterine shape	Roundness (H/L)	Ratio = [AP diameter] / [Length]	Auto
Myometrial wall	Asymmetry (A/P)	[Anterior] / [Posterior] in AP diameter	Auto
Endometrium	Fluid in the Endometrium	Excluded from endometrium thickness	Auto
Uterine Position	Flexion	Anteflexed/Retroflexed/Flat	Auto
	Version	AnteVerted/RetroVerted	Manual
Overall echogenicity	Echogenicity	Homogeneous/Heterogeneous	Manual

6. Store with Result/Report



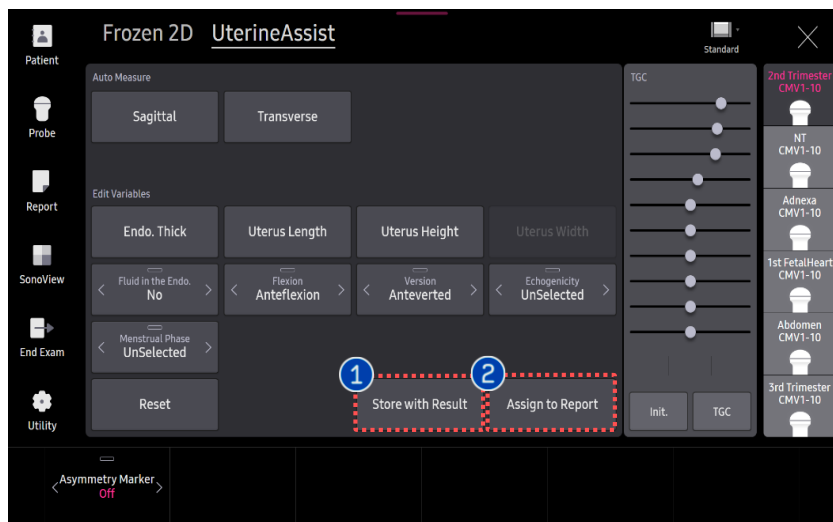
1 Store with Result

To save a UterineAssist image on the thumbnail, please tap the [Store with Result] button.

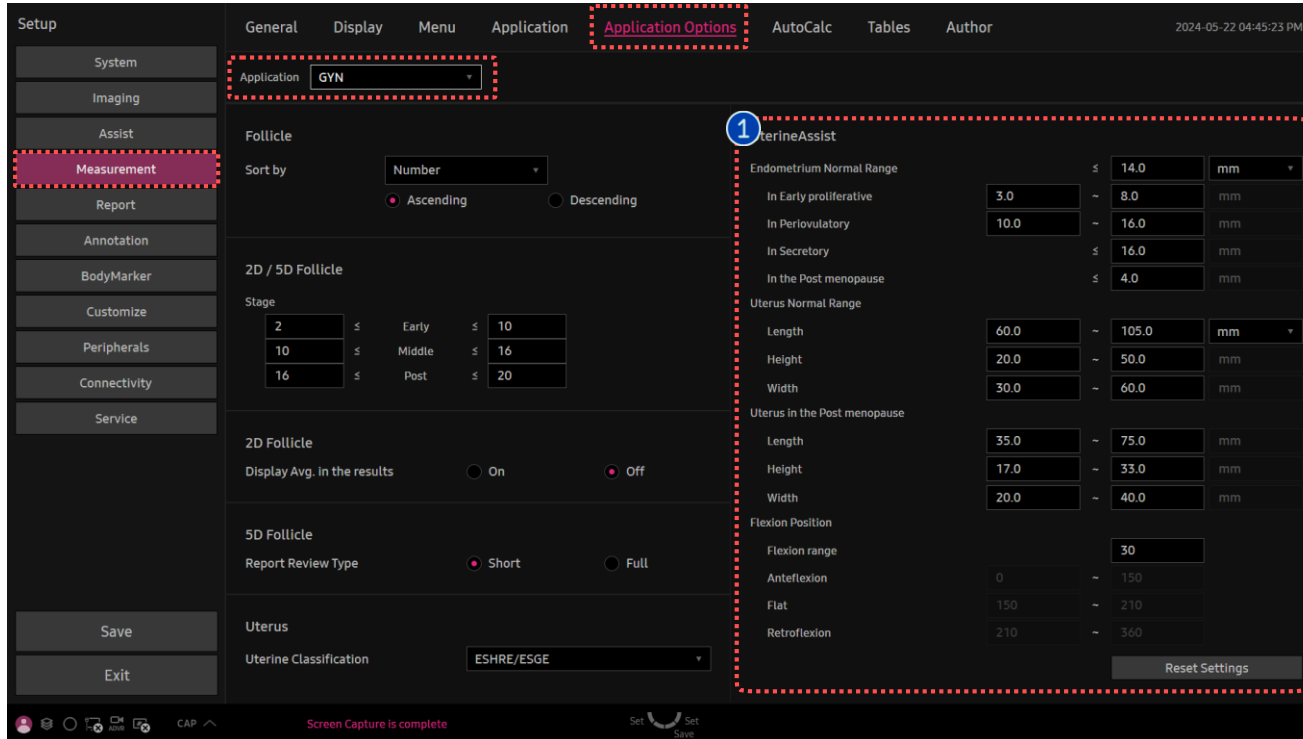
You can assign the UterineAssist result to the Report Page by tapping the [Assign to Report] button on the touch screen.

2 Assign to Report

ID	Name
Date of Birth(Age)	Gender Exam D
Indication	
Diag. Physician	Ref. Physician
Gynecology	
LMP	Ovulation Date Gravida
UterineAssist	
Endo. Thick	7.9 mm
Uterus Total Length	70.9 mm
Uterus Length	54.4 mm
Uterus Height	32.9 mm
Roundness (H/L)	0.61
Asymmetry (A/P)	0.86
Fluid in the Endometrium	No
Flexion	Anteflexion
Version	Anteverted
Echogenicity	UnSelected



7. Setup Page



[Monitor Screen]

Variables

Endo. Thick (~15)	14.4 mm
Uterus Total L (60~105)	97.3 mm
Uterus L	70.2 mm
Uterus H (20-50)	64.7 mm
Uterus W (30-60)	
Uterus Vol.	
Roundness (H/L)	0.92
Asymmetry (A/P)	0.91

Fluid in the Endometrium: No

Flexion: Anteflexion

[Variables_Automated]

1 Set up user's standard value

You can set the cut-off values of each criterion manually.

When result value exceeds the cut-off, it is colored as orange on the Variable tab in scan mode.

► Setup > Measurement > Application Options > Application GYN > UterineAssist

- The features, options may not be commercially available in some countries.
- Sales and shipments are effective only after the approval by the regulatory affairs. Please contact your local sales representative for further details.
- This Quick guide does not include all of the details of instruction, for more detail, please refer to HERA Z20 User Manual.
- Do not distribute this document to customers unless relevant regulatory and legal affairs officers approve such distribution.
- This User Quick Guide is based on HERA Z20 V1.00.
- Disclaimer: Some Images in this content were obtained from other system.

SAMSUNG MEDISON CO., LTD.

© 2024 Samsung Medison All Rights Reserved.

Samsung Medison reserves the right to modify the design, packaging, specifications, and features shown herein, without prior notice or obligation.