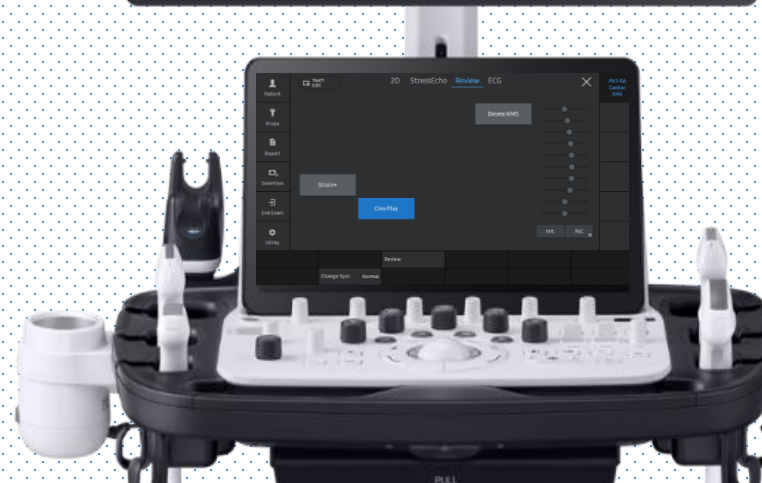
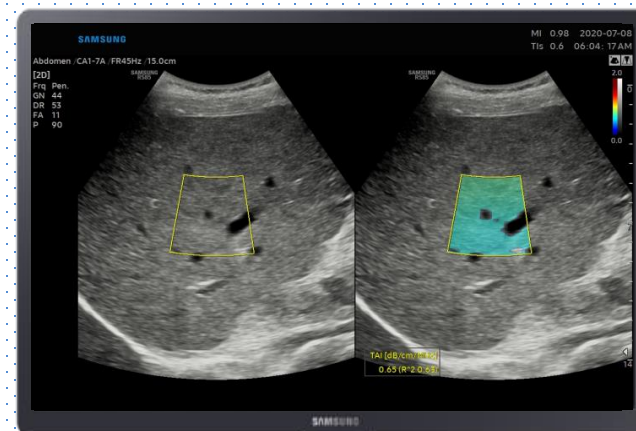


TAI™

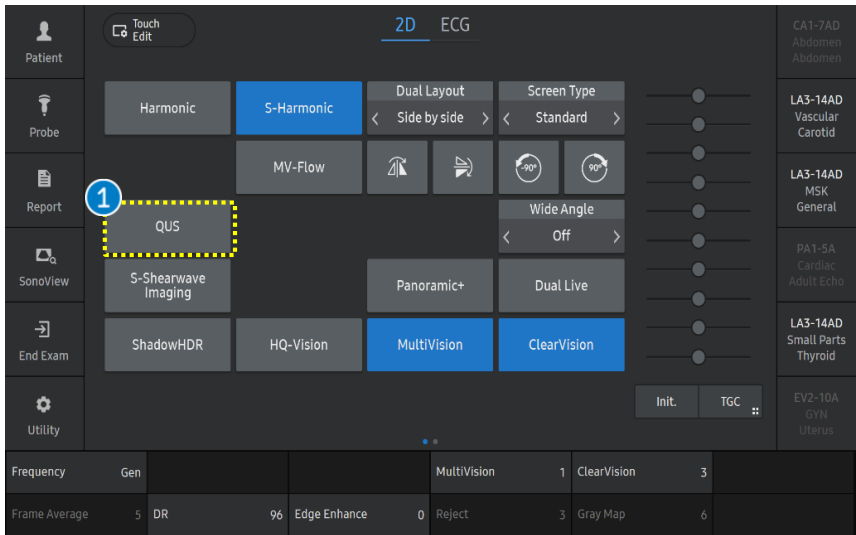
(Tissue Attenuation Imaging)

V series Quick Guide

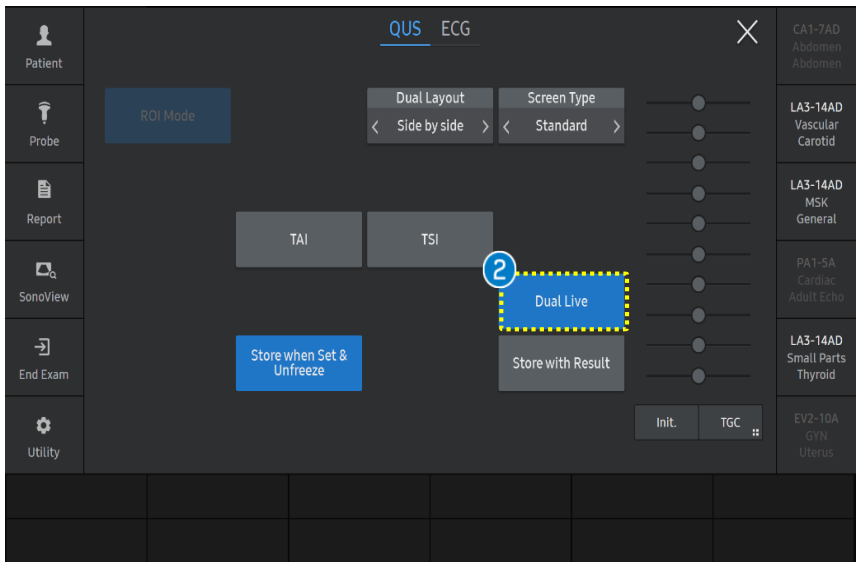


TAI™

1. Start QUS

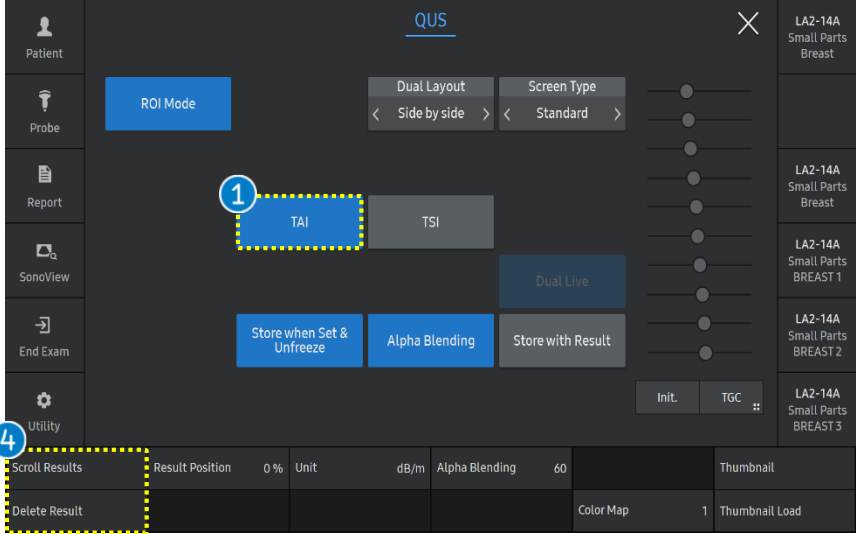


- 1 QUS** Tap the [QUS] on the touch screen to start.
- 2 Scan** Acquire liver parenchyma without vessel and reverberation artifact. B-mode image is placed in the right lobe of the liver at the intercostal space while the patient hold his or her breath.
- 3 Dual Live** You can select the [Dual Live] depends on your preference.



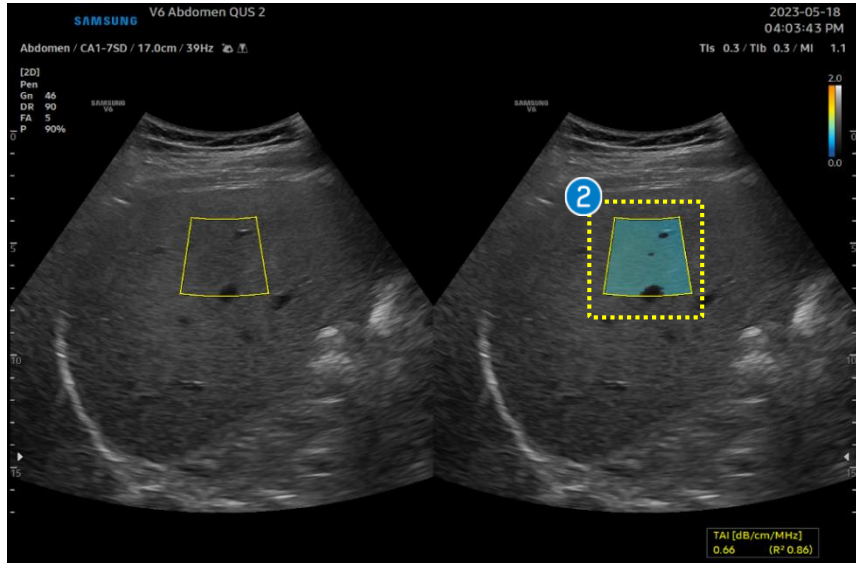
TAI™

2. Activate TAI™



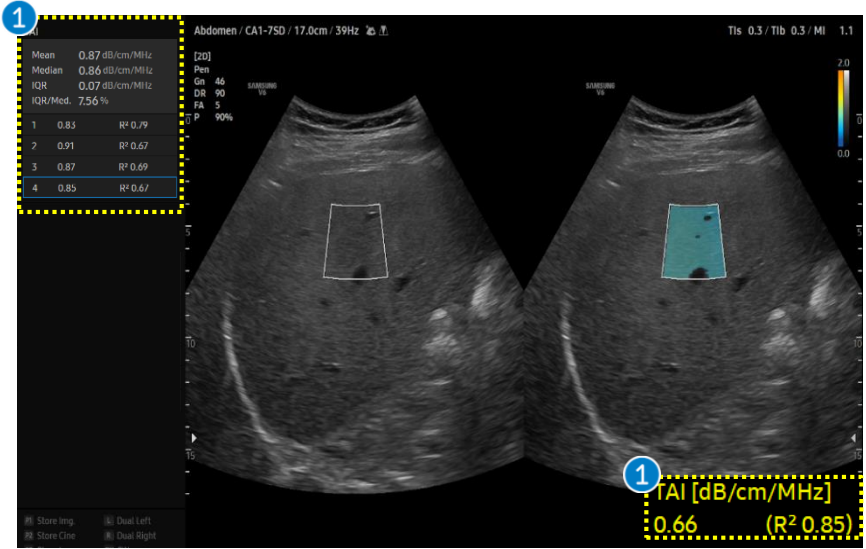
1 TAI	Activate the [TAI] function.
2 ROI Position	The ROI box is placed in a relatively homogenous region of the right lobe of the liver at least 2cm below the liver capsule, while avoiding areas with focal fat sparing or deposition and large vessels.
3 Set	Press the [Set] button on the control panel to confirm the result, the result value (dB/cm/MHz, R ²) is displayed on the screen.
4 Scroll Results / Delete Result	Scroll the results and delete the specific result which is selected.

★Tips Available to change the unit 'dB/m', 'dB/cm/MHz'.



TAI™

3. The result of TAI™



1 Result

- TAI™ (Tissue attenuation imaging) provides quantitative measurement of attenuation coefficients of tissues.
- R² (Measurement quality)
 - Higher value (R² > 0.6) indicates reliable result.
 - R² < 0.6 (Unreliable result)

The Results in red color is recommended to avoid region.

**TAI [dB/cm/MHz]
0.79 (R² 0.58)**

2 TAI TSI

TAI	Mean 0.75	Median 0.73
	IQR 0.06	IQR/Med. 7.73
ROI	Value (dB/cm/MHz)	R²
1	0.78	0.89
2	0.78	0.89
3	0.73	0.83
4	0.72	0.84
5	0.72	0.84

2 Report

Select [Report] button on the touch screen and the result value is saved on the report. You can check the mean and median value of consecutive measurements.

- The features, options may not be commercially available in some countries.
- Sales and shipments are effective only after the approval by the regulatory affairs. Please contact your local sales representative for further details.
- This Quick guide does not include all of the details of instruction, for more detail, please refer to V series User Manual.
- Do not distribute this document to customers unless relevant regulatory and legal affairs officers approve such distribution.
- This User Quick Guide is based on V series V1.05.
- Disclaimer: Some Images in this content were obtained from other system.

SAMSUNG MEDISON CO., LTD.

© 2024 Samsung Medison All Rights Reserved.

Samsung Medison reserves the right to modify the design, packaging, specifications, and features shown herein, without prior notice or obligation.