

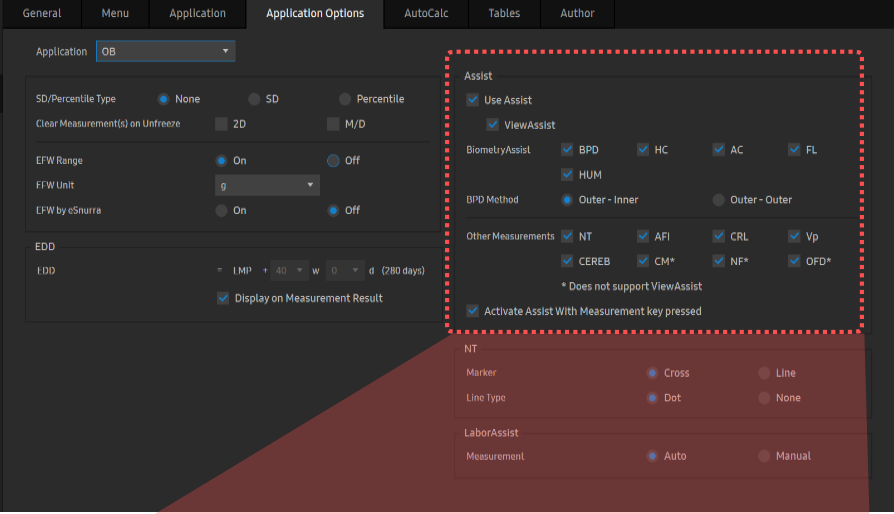
ViewAssist™

V Series Quick Guide

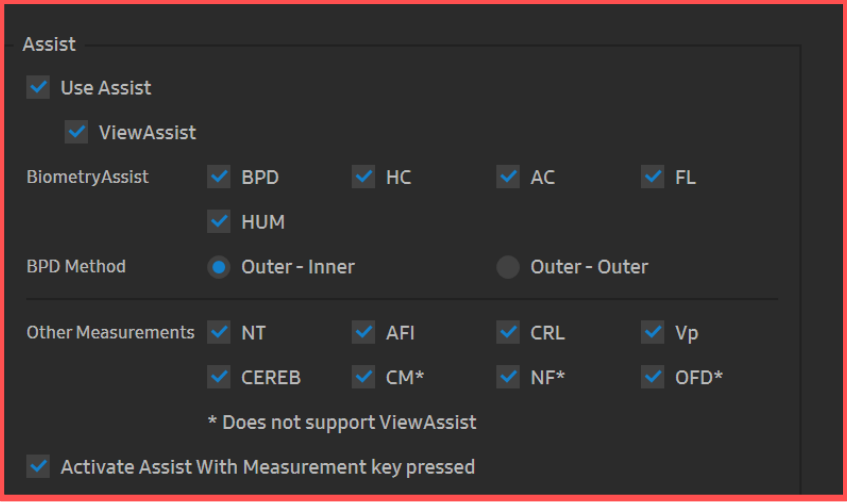


ViewAssist™

1. Set up for ViewAssist™



- 1 Setup
Go Setup > Measurement > Application Options> OB to activate ViewAssist Setup.
- 2 Adjust options
Check box on available items you desire. By turning off ViewAssist, you'll only activate BiometryAssist.
※ "*" Does not support ViewAssist.



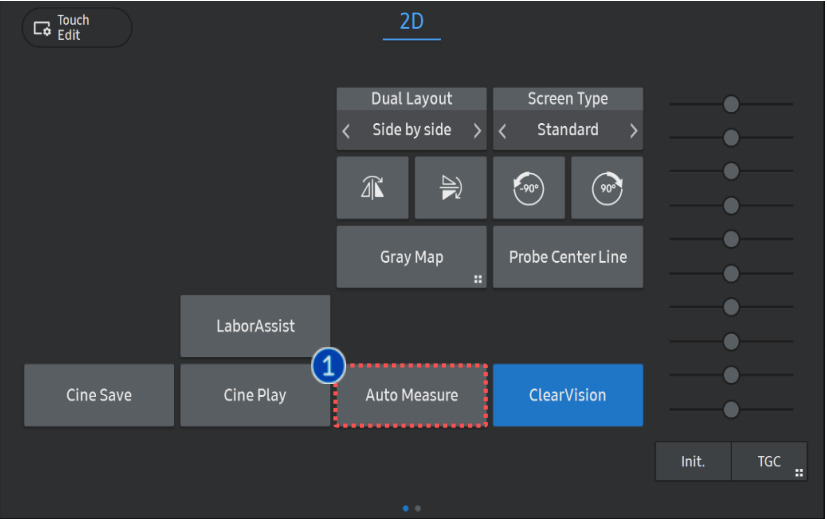
2. 2D Acquisition





1 2D acquisition

Acquire the standard biometry view.

3. Activate ViewAssist™



<p>① Measure Key</p>	<p>Press [measure] key or [Auto Measure] to start ViewAssist.</p>  <p>The view is automatically recognized and the measured result is displayed.</p>
<p>② Modify</p>	<p>To modify the caliper location, Select [Change] key and position the cursor at the desired location.</p> 
<p>③ Confirm</p>	<p>Confirm the measured results to assign them on the report.</p>

4. Measurable Items

View	Measurement
Trans-Thalamic view	BPD OFD HC
Trans-Cerebellar view	CEREB CM NF
Trans-Ventricular view	Vp
Abdomen	AC
Femur	FL
Humerus	HL
Amniotic Fluid	AFI
MSP	CRL NT

★ Tips

From 18 views, ViewAssist supports Auto Measurement(Biometry) and Auto Annotation.

- The features, options may not be commercially available in some countries.
- Sales and shipments are effective only after the approval by the regulatory affairs. Please contact your local sales representative for further details.
- This Quick guide does not include all of the details of instruction, for more detail, please refer to V series User Manual.
- Do not distribute this document to customers unless relevant regulatory and legal affairs officers approve such distribution.
- This User Quick Guide is based on V series V1.05.
- Disclaimer: Some Images in this content were obtained from other system.

SAMSUNG MEDISON CO., LTD.

© 2024 Samsung Medison All Rights Reserved.

Samsung Medison reserves the right to modify the design, packaging, specifications, and features shown herein, without prior notice or obligation.