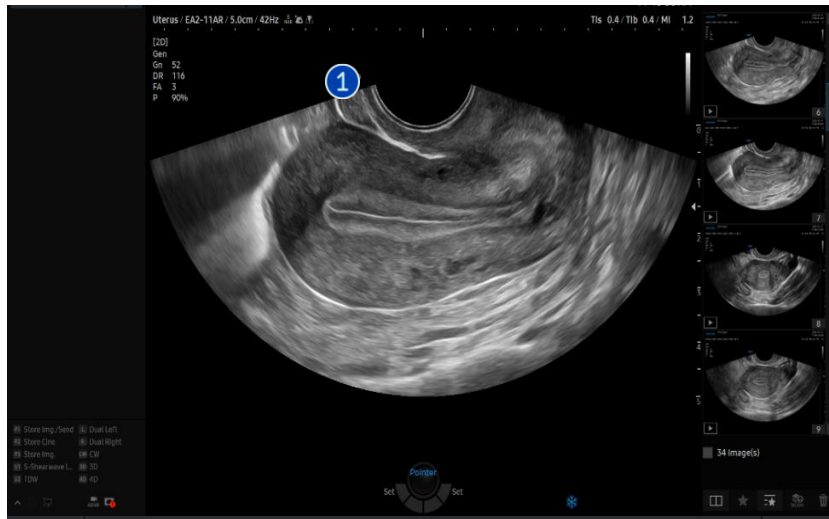


# UterineAssist™

## V Series Quick Guide



# 1. Start UterineAssist™

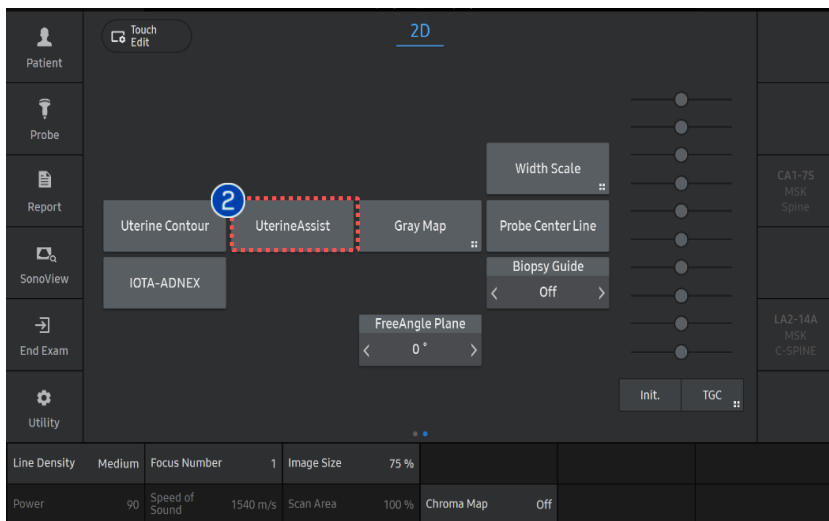


1 Image Acquisition

Acquire the sagittal or transverse image of the uterus in 2D mode and press the [Freeze] button.

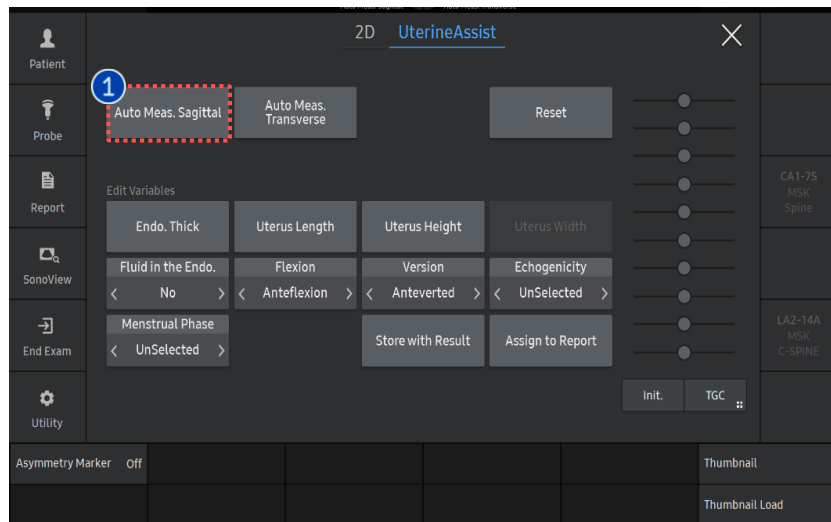
2 Start UterineAssist

Tap [UterineAssist] button on the touch screen to start.



UterineAssist™

# 2. Measure on Sagittal Plane



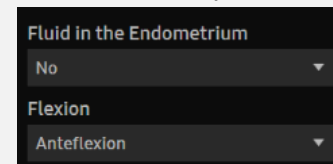
### 1 Auto Meas. Sagittal

Tap [Auto Meas.Sagittal] button to make auto measurement.

Measured data is displayed on the left column.

Additionally, the following are shown:

- [Fluid in Endometrium]: the presence or absence of fluid in the endometrium.
- [Flexion]: type is automatically presented.



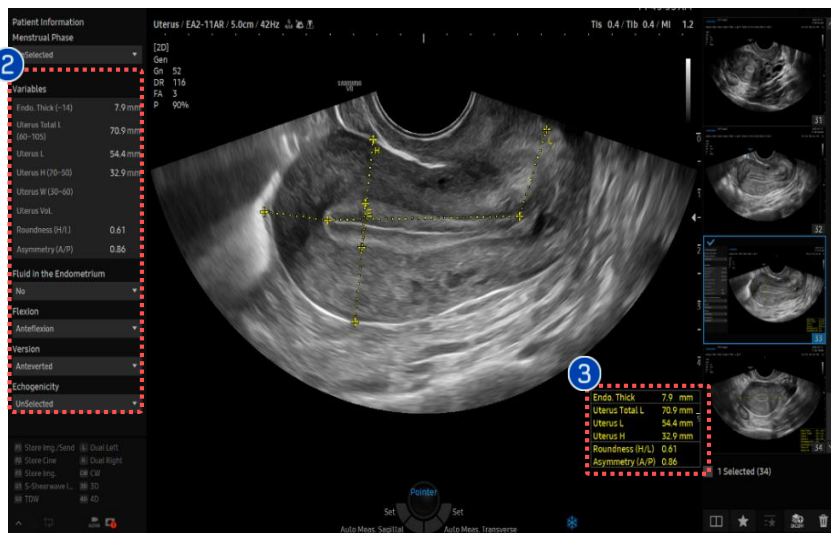
### 2 Variables

You will get the value of [Endo.Thickness], [Uterus Total Length], [Uterus Height], [Roundness(H/L)] and [Asymmetry (A/P)].

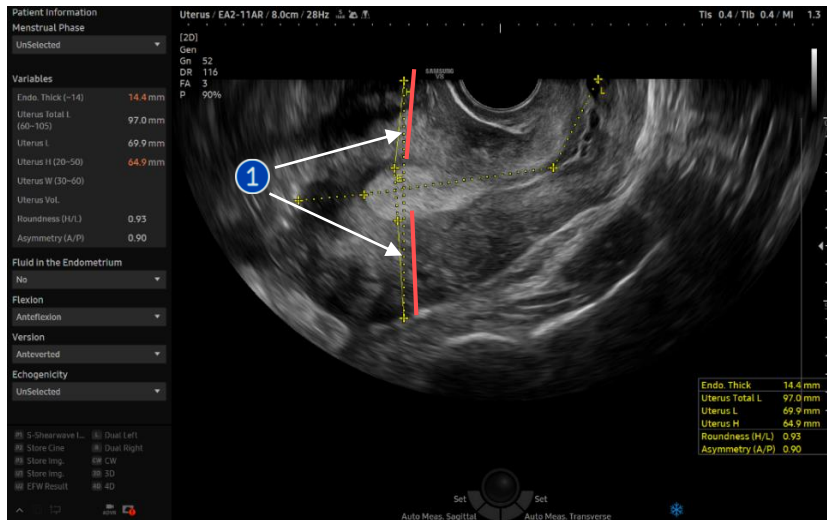
- [Uterus Total L] : Uterus Body + Cervix Length
- [Uterus L] : Uterus Body Length

### 3 Result

Endo. Thick	7.9 mm
Uterus Total L	70.9 mm
Uterus L	54.4 mm
Uterus H	32.9 mm
Roundness (H/L)	0.61
Asymmetry (A/P)	0.86



# 3. Edit the result on Sagittal plane

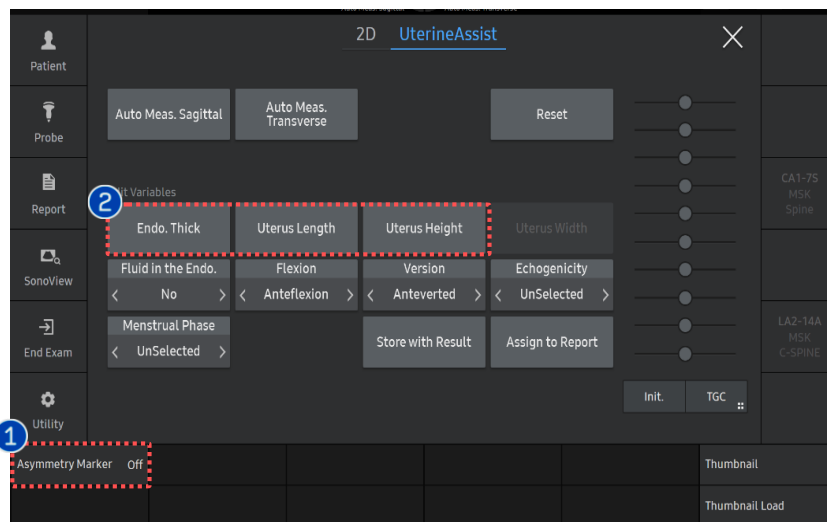
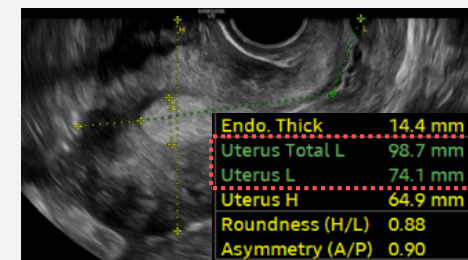


## 1 Asymmetry Marker

It shows the line of anterior and posterior myometrium wall which were used to calculate the Asymmetry ratio (A/P).

## 2 Edit result value

- Endo.Thick, Uterus Length, Uterus Height
- Please tap the button of each item to revise the measurement.
- Measure line will be colored as green.
- You can select the start point by CP's change key and assign it by Set key.

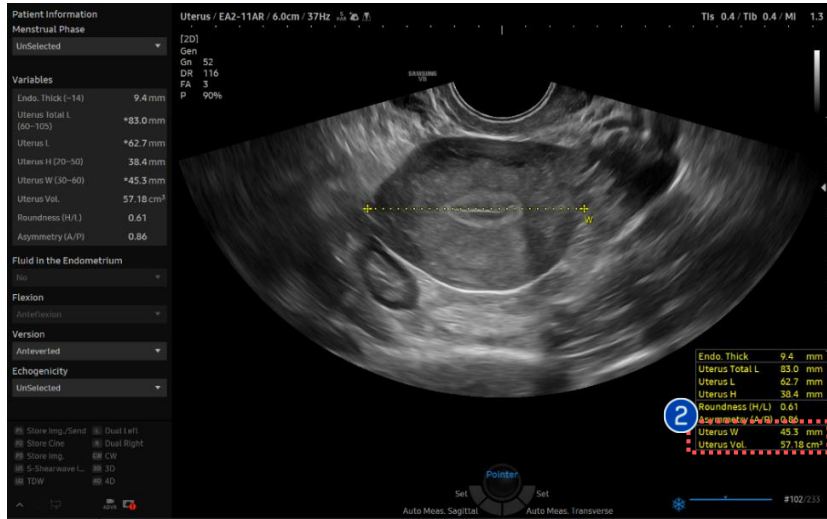


## ★ Tips

[Uterus Width] allows revision after measuring it on the transverse plane.

UterineAssist™

# 4. Measure on Transverse plane



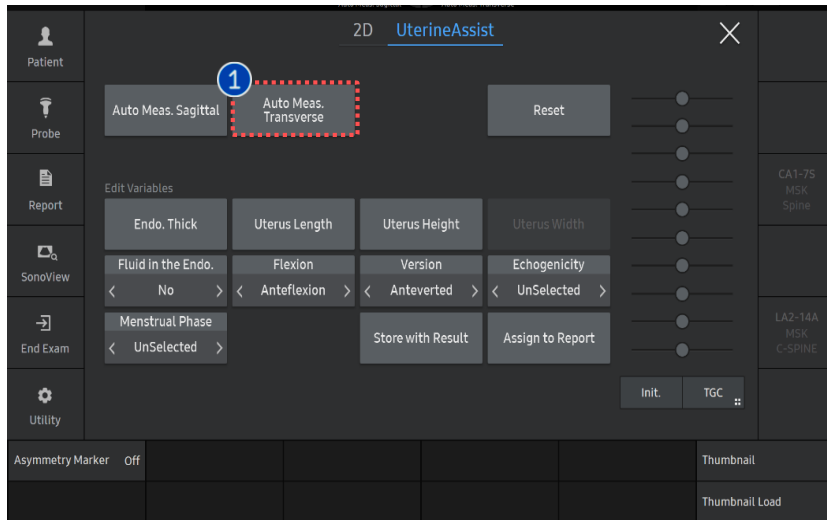
1 Auto Meas. Transverse

Tap [Auto Meas.Transverse] button to make auto measurement.

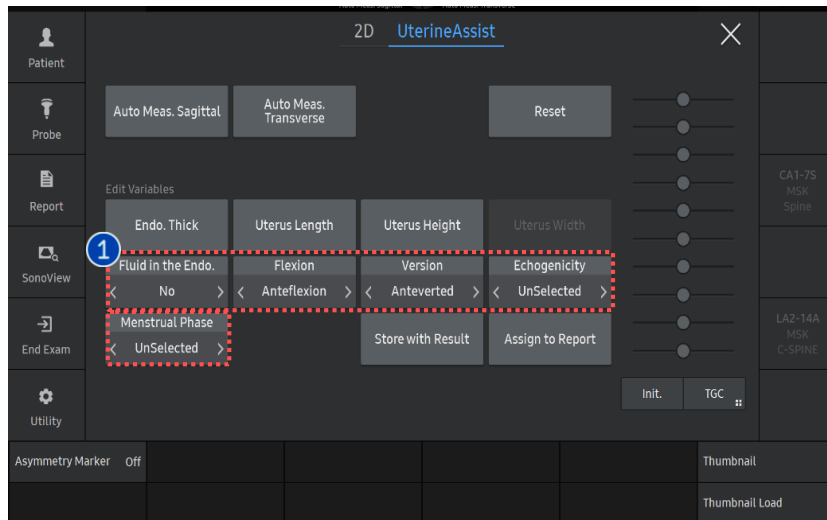
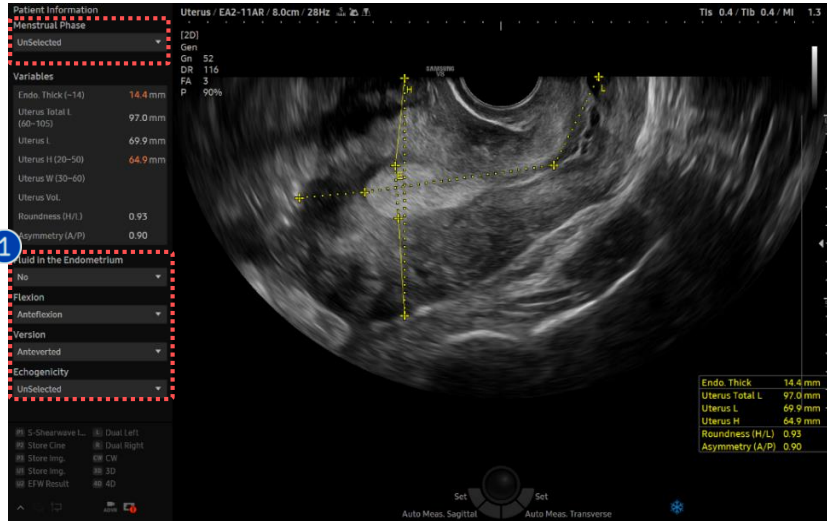
Endo. Thick	9.4 mm
Uterus Total L	83.0 mm
Uterus L	62.7 mm
Uterus H	38.4 mm
Roundness (H/L)	0.61
Asymmetry (A/P)	0.86
Uterus W	45.3 mm
Uterus Vol.	57.18 cm <sup>3</sup>

2 Result

You will get the [Uterus W] on transverse view.  
 [Uterus Vol.] will be presented additionally if you have a [Uterus L] and [Uterus H] from sagittal view in advance.



# 5. Edit the variables



- Fluid in the Endo. (Automated item)  
You can select "Yes" or "No".

- Uterus Position

- 1) Flexion (Automated item)

- You can update it. 3 items are provided as follows : Anteflexed, Retroflexed, Flat

- 2) Version (Manual update is required)

- Anteversion, Retroversion are provided as option.

- Anteversion is selected as default.

- Echogenicity(Manual update is required)

- Homogeneous, Heterogeneous are provided as option.

- Menstrual Phase (Manual update is required)

- Menstrual Period, Early Proliferative, Perioviulatory, Secretory, Post Menopause are provided as option.

- Uterus size (L/W/H) standard is different between Post Menopause and the others.

## 1 Edit Variables

### ★ Tips

[Fluid in the Endo] and [Flexion] are presented on sagittal plane.

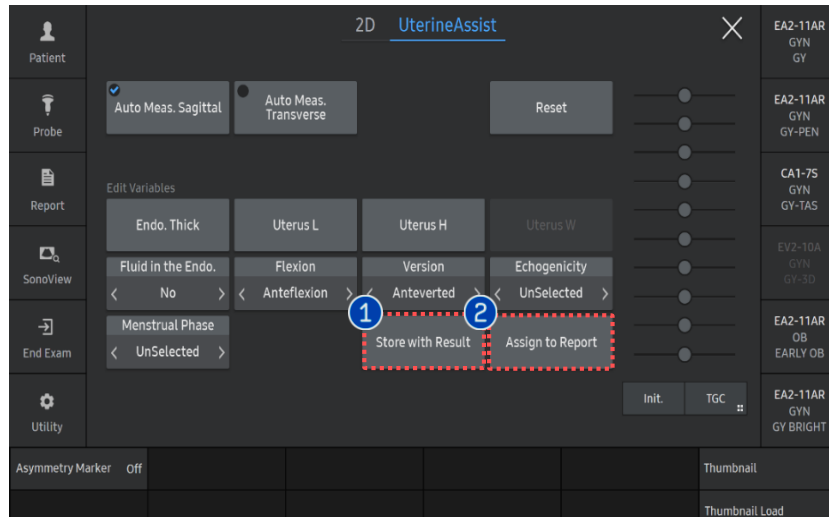
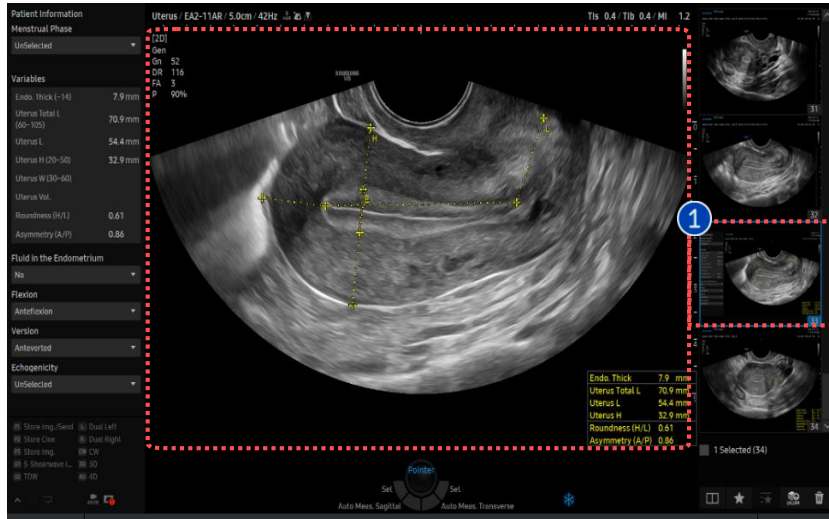
# 6. Interpretation

Patient Information		
Menstrual Phase		
UnSelected		
Variables		
Endometrium (~14)	8.0	mm
Uterine Total L (60~105)	74.9	mm
Uterine L	52.0	mm
Uterine H (20~50)	48.1	mm
Uterine W (30~60)	53.2	mm
Uterine Vol.	69.64	ml
Roundness (H/L)	0.92	
Asymmetry (A/P)	0.92	
Fluid in the Endometrium		
No		
Flexion		
Anteflexion		
Version		
Anteverted		
Echogenicity		
UnSelected		

Patient Information	Menstrual Phase	Unselected / Menstrual Period / Early Proliferative / Perioovulatory / Secretory / Post Menopause
---------------------	-----------------	---

Variables			
Anatomy & Feature	Term	Measurement	Auto /Manual
Endometrium	Endometrium	Endometrium thickness in sagittal view	Auto
Uterine corpus and cervix	Uterine Total L	Total length = d1 + [Cervix]	Auto
Uterine Corpus	Uterine L	(d1) Length = [fundus] + [cavity]	Auto
	Uterine H	(d2) Anteroposterior diameter	Auto
	Uterine W	(d3) transverse diameter	Auto
	Uterine Vol.	Volume(cm <sup>3</sup> ) = d1(cm)Xd2(cm)Xd3(cm) X 0.523	Auto
Uterine shape	Roundness (H/L)	Ratio = [AP diameter] / [Length]	Auto
Myometrial wall	Asymmetry (A/P)	[Anterior] / [Posterior] in AP diameter	Auto
Endometrium	Fluid in the Endometrium	Excluded from endometrium thickness	Auto
Uterine Position	Flexion	Anteflexed/Retroflexed/Flat	Auto
	Version	AnteVerted/RetroVerted	Manual
Overall echogenicity	Echogenicity	Homogeneous/Heterogeneous	Manual

# 7. Store with Result/Report

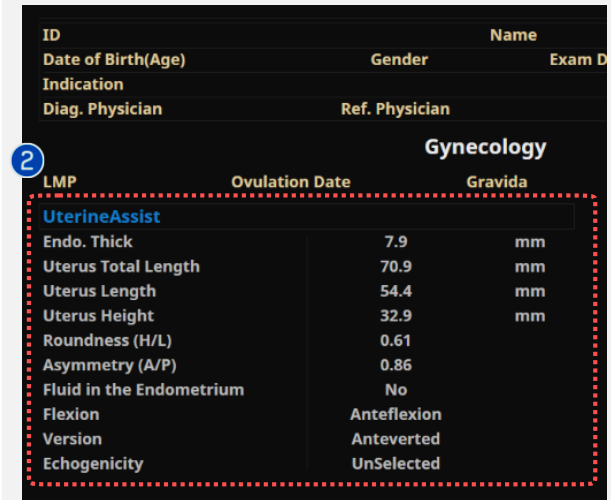


1 Store with Result

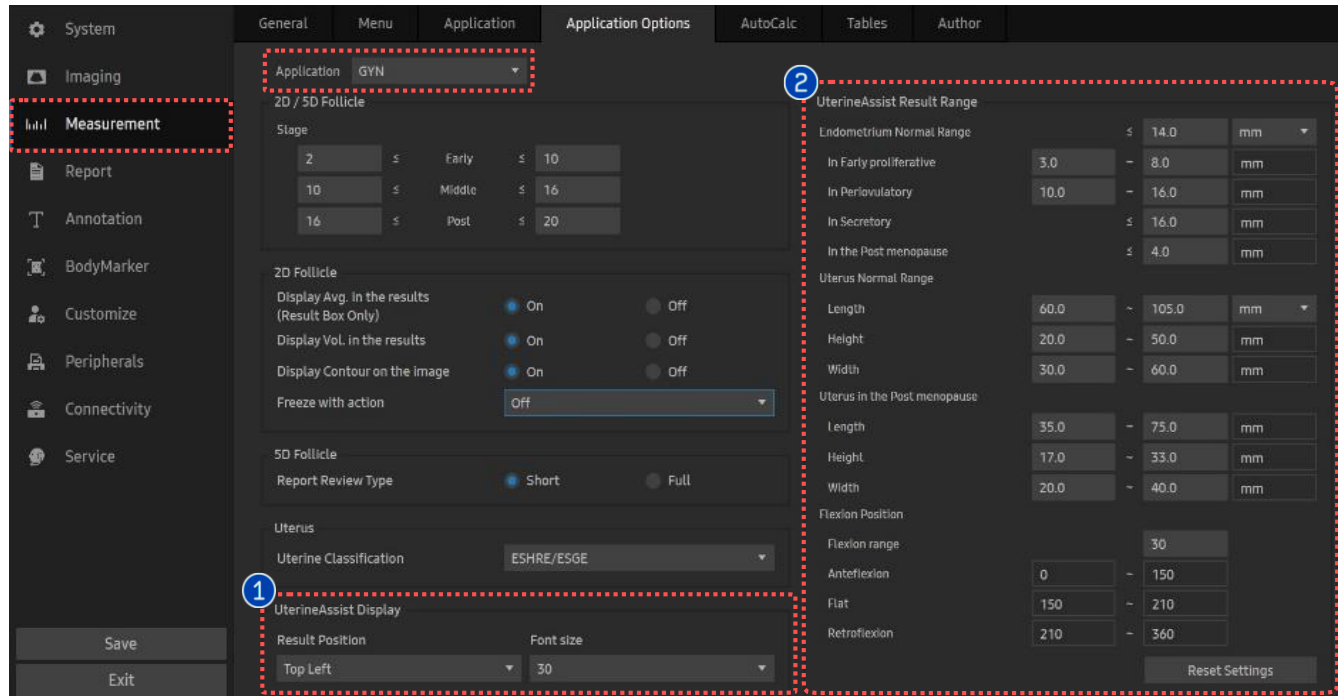
To save a UterineAssist image on the thumbnail, please tap the [Store with Result] button.

2 Assign to Report

You can assign the UterineAssist result to the Report Page by tapping the [Assign to Report] button on the touch screen.



## 8. Set up



[ Monitor Screen ]

Variables	
Endo. Thick (~14)	7.6 mm
Uterus Total L (60~105)	69.2 mm
Uterus L	50.8 mm
Uterus H (20~50)	*60.1 mm
Uterus W (30~60)	
Uterus Vol.	
Roundness (H/L)	1.18
Asymmetry (A/P)	0.40
Fluid in the Endometrium	
No	
Flexion	
Anteflexion	

[ Variables\_Automated ]

### 1 Result box position, font size

You can set the position of the Result box and the font size of the results.  
 ▶ Setup > Measurement > Application Options > Application GYN > UterineAssist

### 2 Set up user's standard value

You can set the cut-off values of each criterion manually.  
 When result value exceeds the cut-off, it is colored orange on the Variable tab in scan mode.

- The features, options may not be commercially available in some countries.
- Sales and shipments are effective only after the approval by the regulatory affairs. Please contact your local sales representative for further details.
- This Quick guide does not include all of the details of instruction, fore more detail, please refer to V series User Manual.
- Do not distribute this document to customers unless relevant regulatory and legal affairs officers approve such distribution.
- This User Quick Guide is based on V series V1.06.
- Disclaimer: Some Images in this content were obtained from other system.

**SAMSUNG MEDISON CO., LTD.**

© 2025 Samsung Medison All Rights Reserved.

Samsung Medison reserves the right to modify the design, packaging, specifications, and features shown herein, without prior notice or obligation.