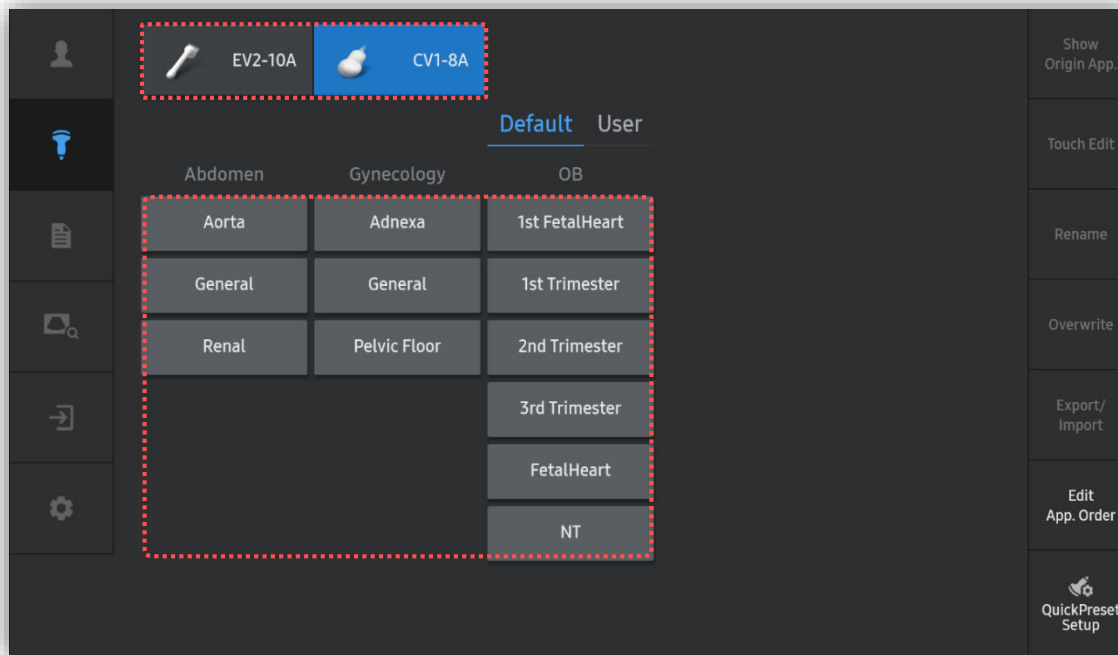


# RealisticVue™

## HERA W10 Quick Guide



# 1. Probe and Preset



※ RealisticVue™ can be operated under the following conditions :

Probe	Application
CV1-8A EV2-10A	All presets

## 2. Volume acquisition



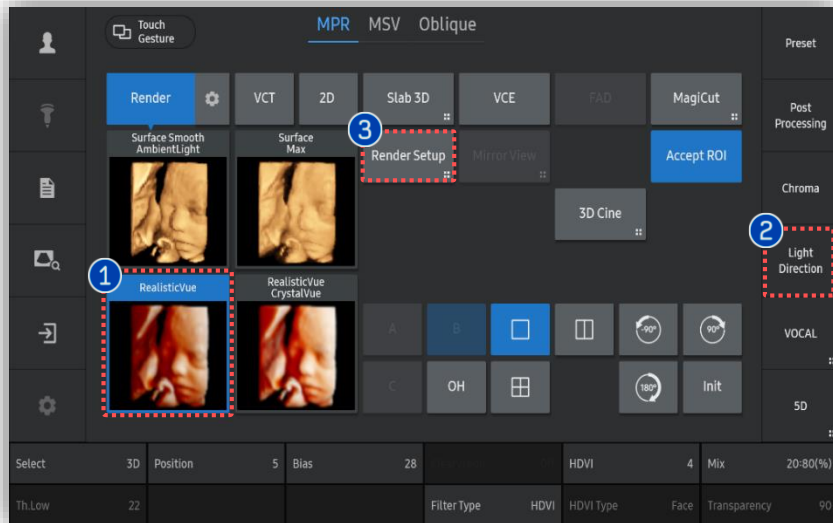
### ① Volume acquisition

Acquired volume data with the structure you wish to apply RealisticVue™.

### ★Tips

For fetal face 3D evaluation, obtain fetus profile as much as clear without interruption of hand or cord.

# 3. Apply RealisticVue™



1 RealisticVue™

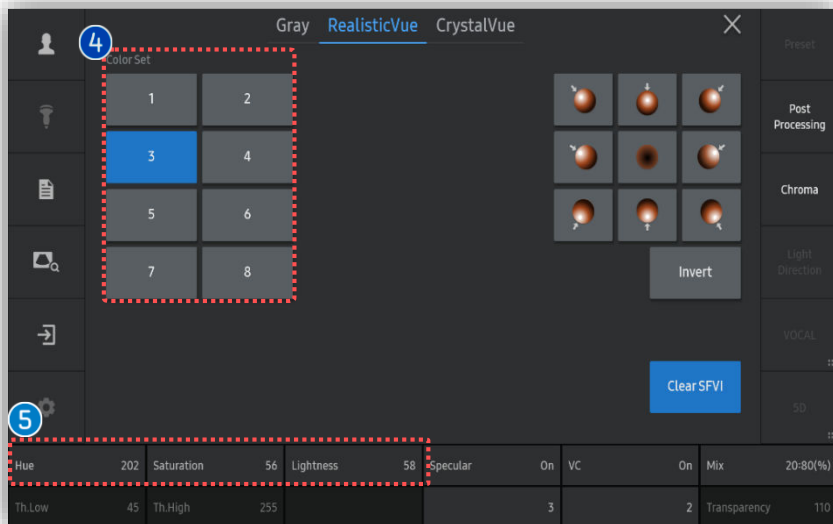
Tap [RealisticVue™] to apply it.

2 Light Direction

Tap [Light Direction] within short cut keys when you adjust the direction of light freely by trackball.

3 Render Setup

Tap [Render Setup] on the touch screen to adjust parameters of RealisticVue™.



4 Color Set

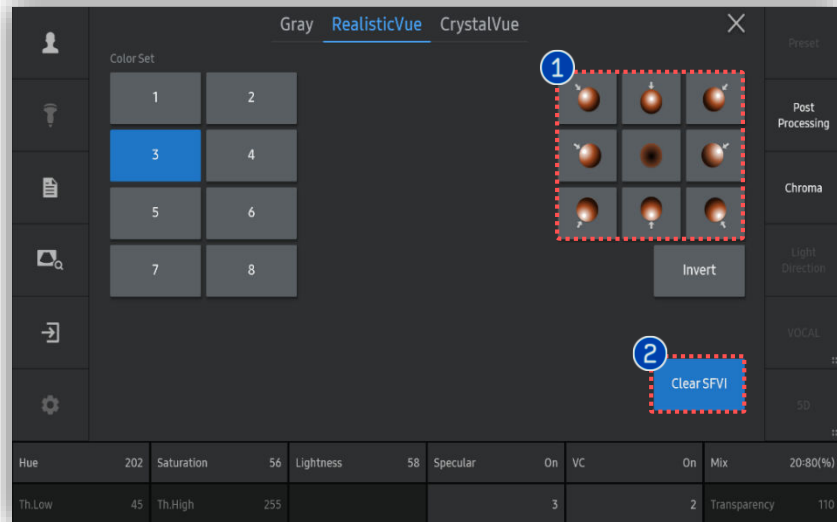
Select color of RealisticVue effect among 8 designated options.

5 Color parameters

For fine control of color effect, adjust Hue, Saturation and Lightness.

- Hue: Shade of a color
- Saturation: Purity or intensity of color
- Lightness: Brightness of color

### 3. Apply RealisticVue™



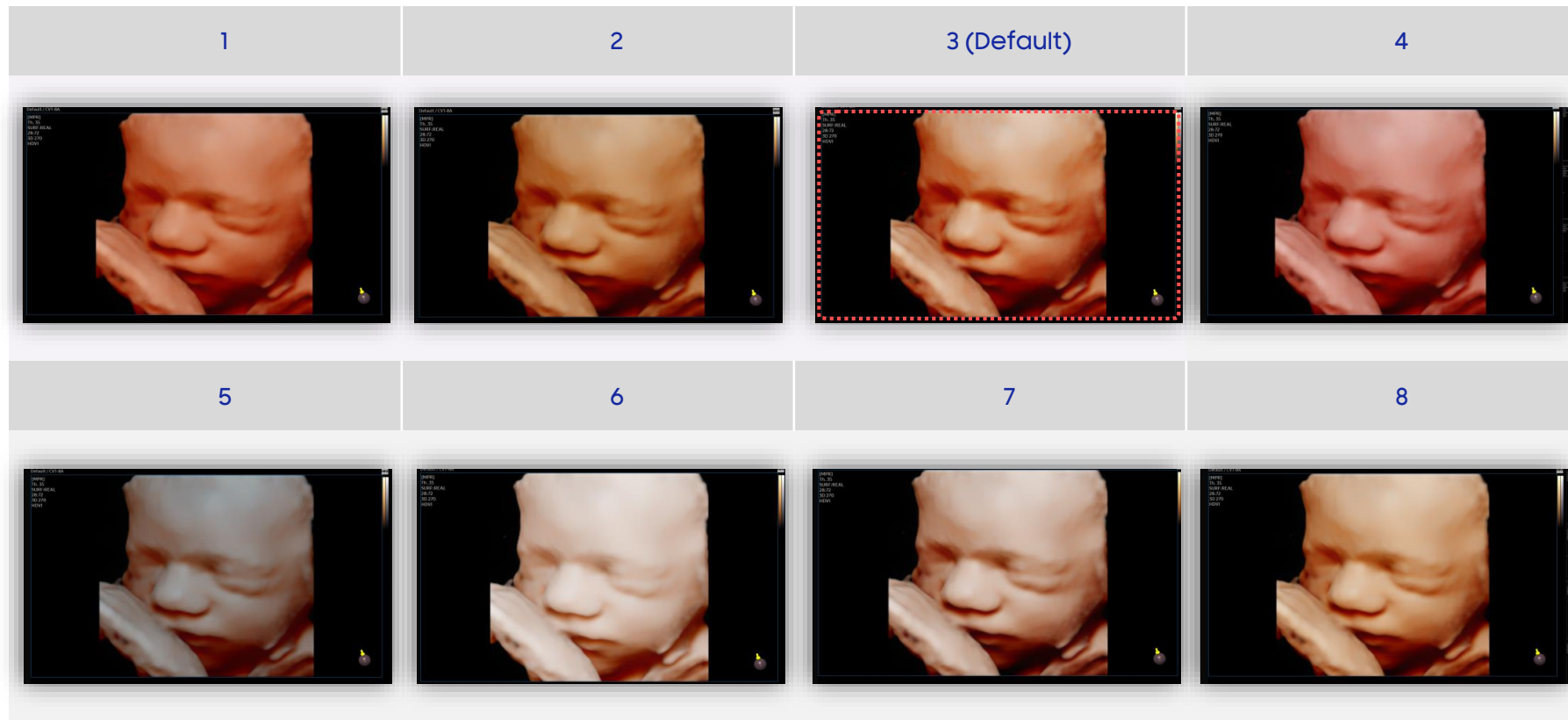
#### 1 Pre-Defined Light Direction

Tap preferred light direction among 9 designated options.

#### 2 Clear SFVI

Smart Filter Volume Imaging. It reduces noise.

# 4. Color Set of RealisticVue™



- The features, options may not be commercially available in some countries.
- Sales and shipments are effective only after the approval by the regulatory affairs. Please contact your local sales representative for further details.
- This Quick guide does not include all of the details of instruction, for more detail, please refer to HERA W10 User Manual.
- Do not distribute this document to customers unless relevant regulatory and legal affairs officers approve such distribution.
- This User Quick Guide is based on HERA W10 V1.03.
- Disclaimer: Some Images in this content were obtained from other system.

**SAMSUNG MEDISON CO., LTD.**

© 2024 Samsung Medison All Rights Reserved.

Samsung Medison reserves the right to modify the design, packaging, specifications, and features shown herein, without prior notice or obligation.