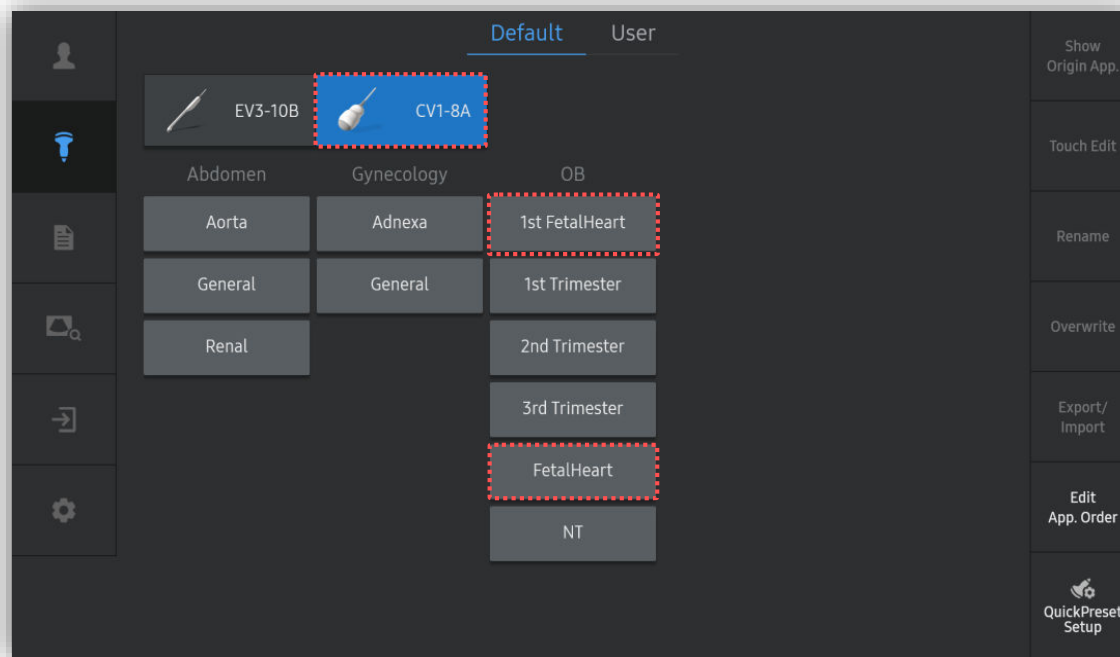


# RV MPI

## HERA W10 Quick Guide



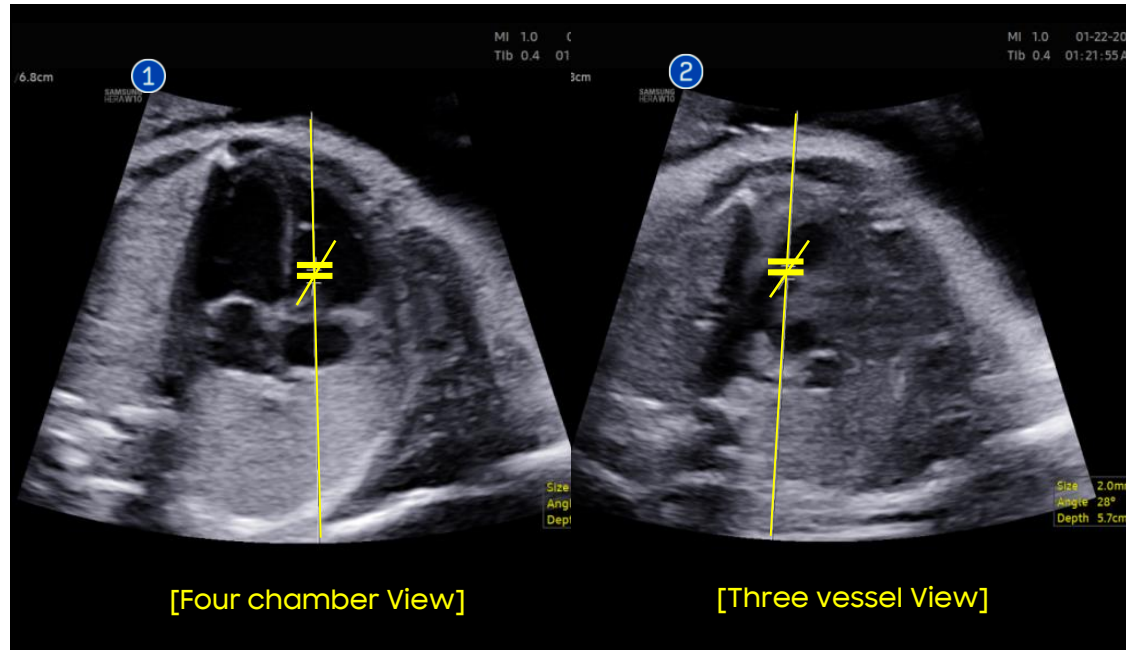
# 1. Probe and Preset



※ RV MPI can be operated under the following conditions :

Probe	Application
CA2-9, CA1-7A, CA3-10A, CV1-8A	OB(1 <sup>st</sup> Fetal Heart, Fetal Heart) * Operate on PW Mode

## 2. Acquire PW Images



① To take inflow wave

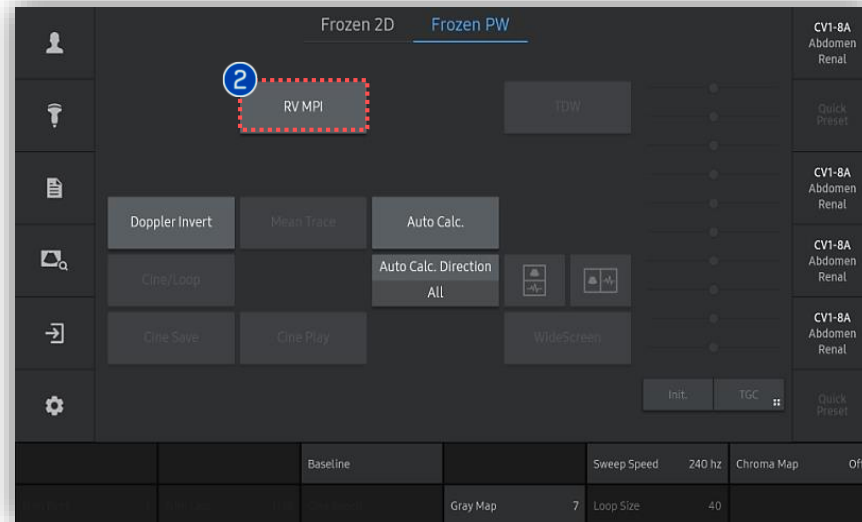
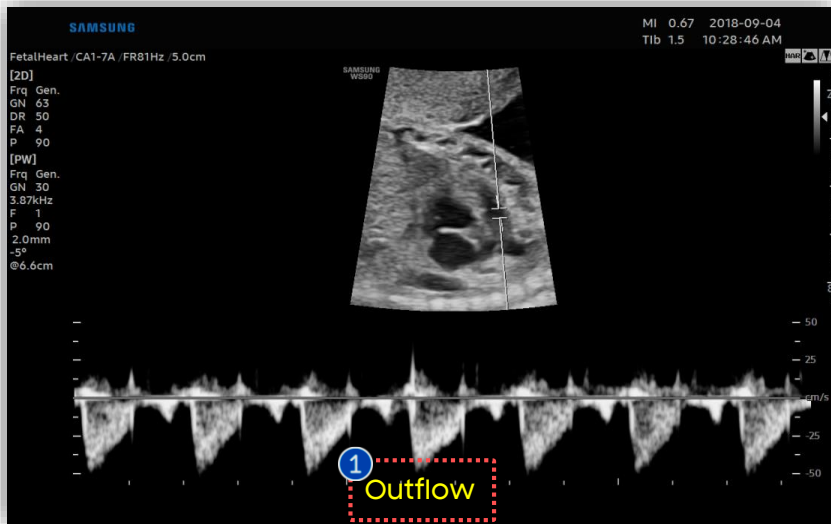
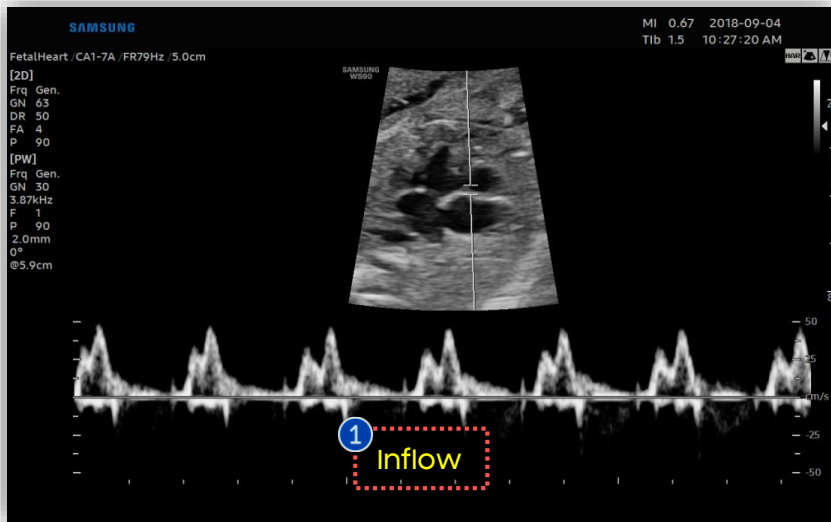
- Scanning plane : Four-chamber view
- Sample volume position : At the level of Tricuspid valves

② To take outflow wave

- Scanning plane : 3 vessel and trachea view or RVOT short axis view
- Sample volume position : At the level of the pulmonary valve

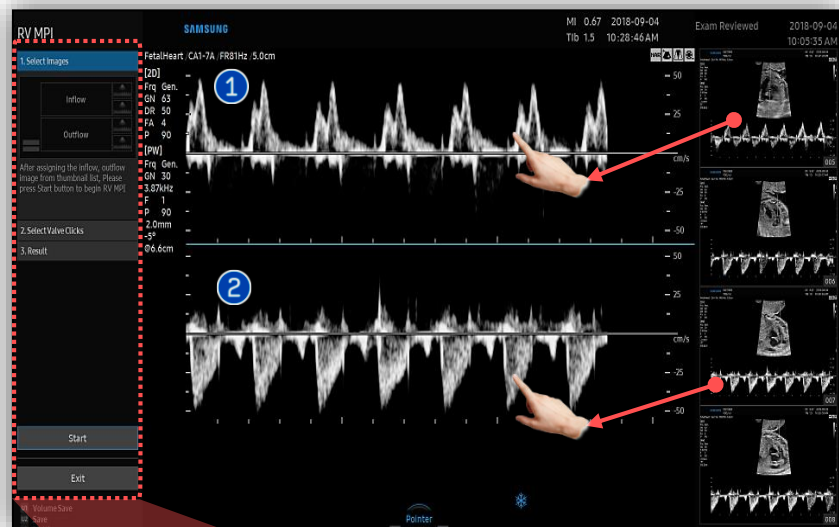
RV MPI

# 3. Acquire Inflow and Outflow images

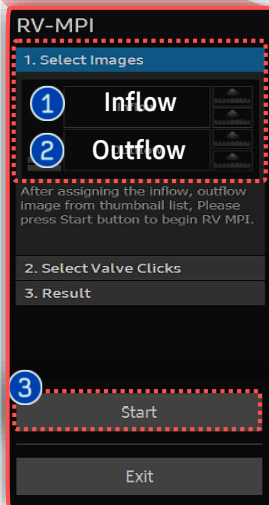


- |                                 |  |
|---------------------------------|--|
| <p>1 Acquire Doppler images</p> | <p>Acquire Inflow and Outflow Doppler image in PW mode then Save respectively.</p> |
| <p>2 RV-MPI</p>                 | <p>Tab [RV MPI] button on Frozen PW screen.</p>                                    |

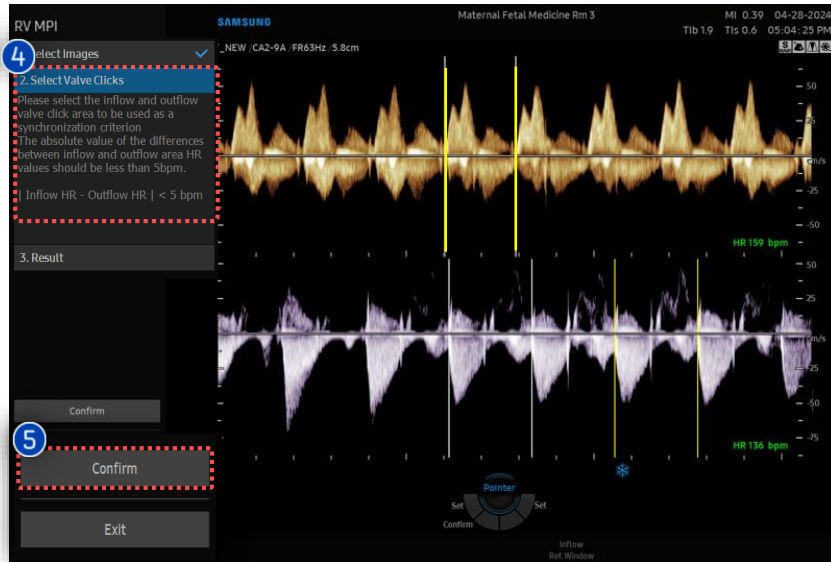
# 4. Select images



1	Select an Inflow image	Select an Inflow image from thumbnail list, then move it to top window in dual screen to assign inflow window by using [set] button.
2	Select an Outflow image	Select an Outflow image from thumbnail list, then move it to bottom window in dual screen to assign outflow window by using [set] button.
3	Start	Press [Start] button



## 5. Select valve clicks



Select the inflow and outflow valve click area to be used as a synchronization criterion.

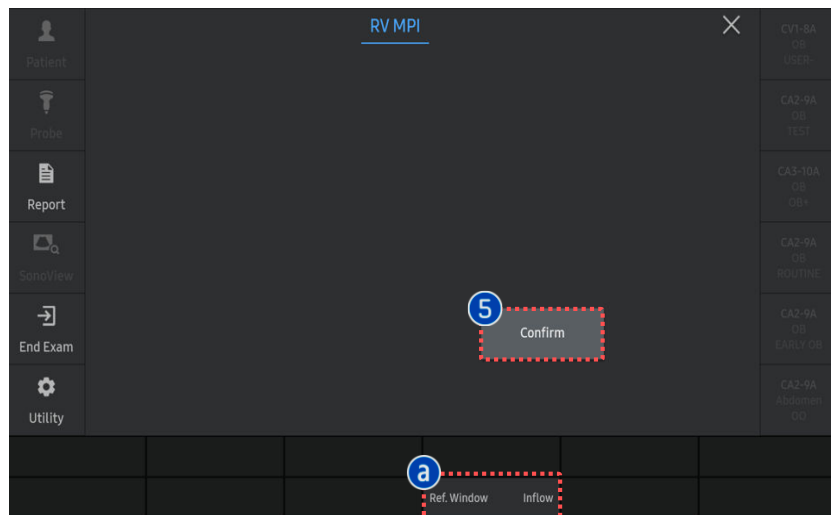
The absolute value of the differences between inflow and outflow area HR values should be less than 5 bpm.

- a Ref. Window : If you select inflow as reference window, bpm of outflow will be synchronized to bpm of inflow.

### 4 Select Valve Clicks

### 5 Confirm

Press [Confirm] to show the measurement results.



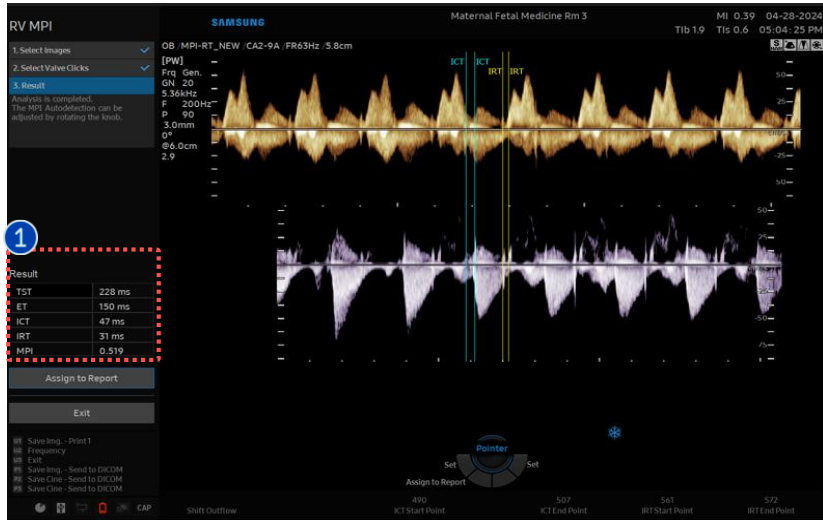
### ★ Tips

If the heart beat of the two selected Doppler deviates by  $\pm 5$  bpm, an error message appears on the bottom of the monitor.

**Inappropriate beats have been selected. Select beats again.**

RV MPI

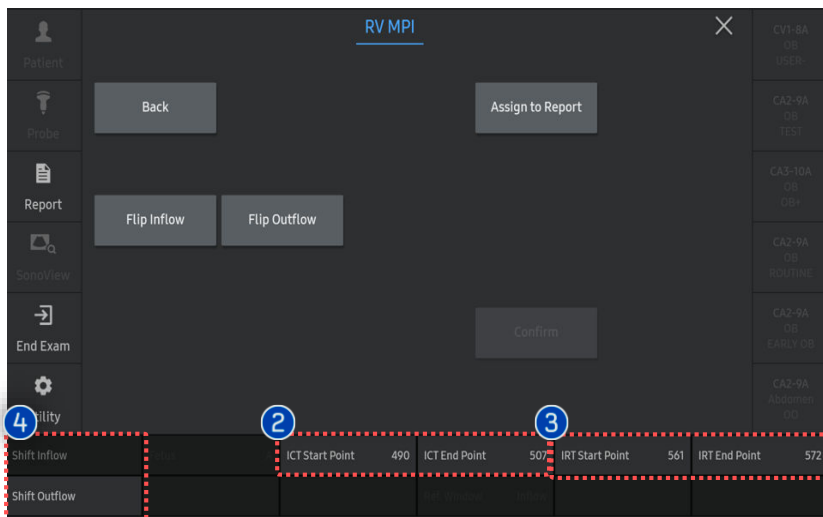
# 6. Result of RV MPI



- TST(ms) : Total Systolic Time
- ET(ms) : Ejection Time
- ICT(ms) : Isovolumetric Contraction Time
- IRT(ms) : Isovolumetric Relaxation Time
- Mod-MPI : Modified Myocardial Performance Index

1 Results

Result	
TST	228 ms
ET	150 ms
ICT	47 ms
IRT	31 ms
MPI	0.519



2 ICT Start, End Point

Modify start and End point of ICT by rotating knob on the touch screen.

3 IRT Start, End Point

Modify start and End point of IRT by rotating knob on the touch screen.

4 Shift Inflow/ Outflow

Able to shift inflow and outflow to edit MPI result.

- The features, options may not be commercially available in some countries.
- Sales and shipments are effective only after the approval by the regulatory affairs. Please contact your local sales representative for further details.
- This Quick guide does not include all of the details of instruction, for more detail, please refer to HERA W10 User Manual.
- Do not distribute this document to customers unless relevant regulatory and legal affairs officers approve such distribution.
- This User Quick Guide is based on HERA W10 V1.03.
- Disclaimer: Some Images in this content were obtained from other system.

**SAMSUNG MEDISON CO., LTD.**

© 2024 Samsung Medison All Rights Reserved.

Samsung Medison reserves the right to modify the design, packaging, specifications, and features shown herein, without prior notice or obligation.