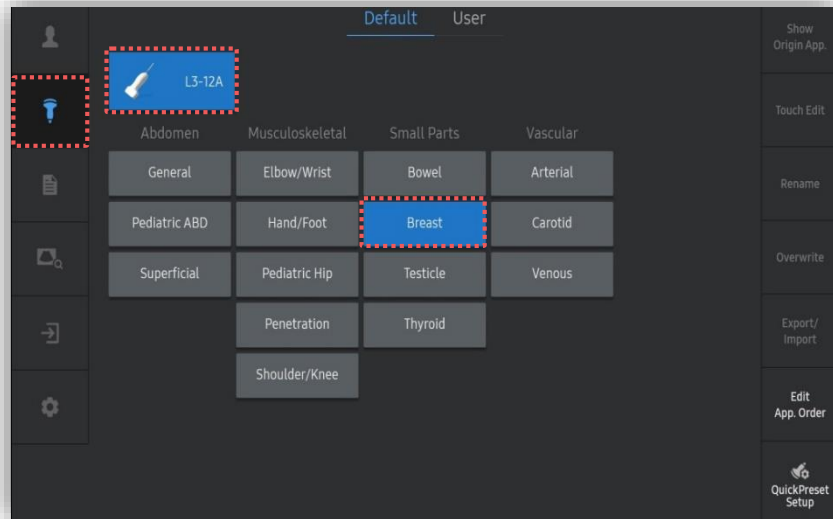


E-Strain™

HERA W10 Quick Guide



1. Probe and Preset



※ E-Strain™ can be operated under the following conditions :

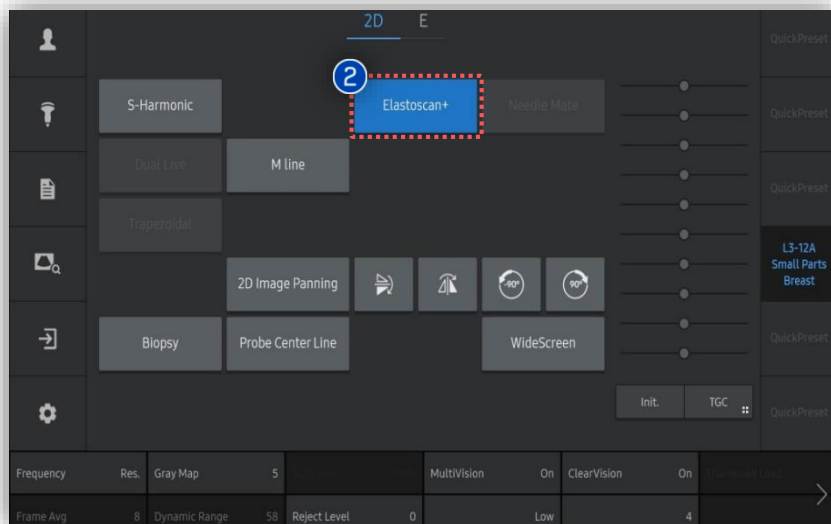
Probe	Application
L3-12A LA-18B	Small Parts (Breast) All MSK Presets
LA2-9A	Small Parts (Breast, Testicle, Thyroid)
LA2-14A	Small Parts (Breast, Testicle, Pediatric testicle, Thyroid) All MSK Presets
EV3-10B EV2-10A	Gyn (General, Adnexa) All Urology Presets
EV2-12 E3-12A, EA2-11B EA2-11AR/AV, VR5-9	All Gyn Presets All Urology Presets

2. Start ElastoSscan+



1 Scan

Image the suspicious lesion in the breast.



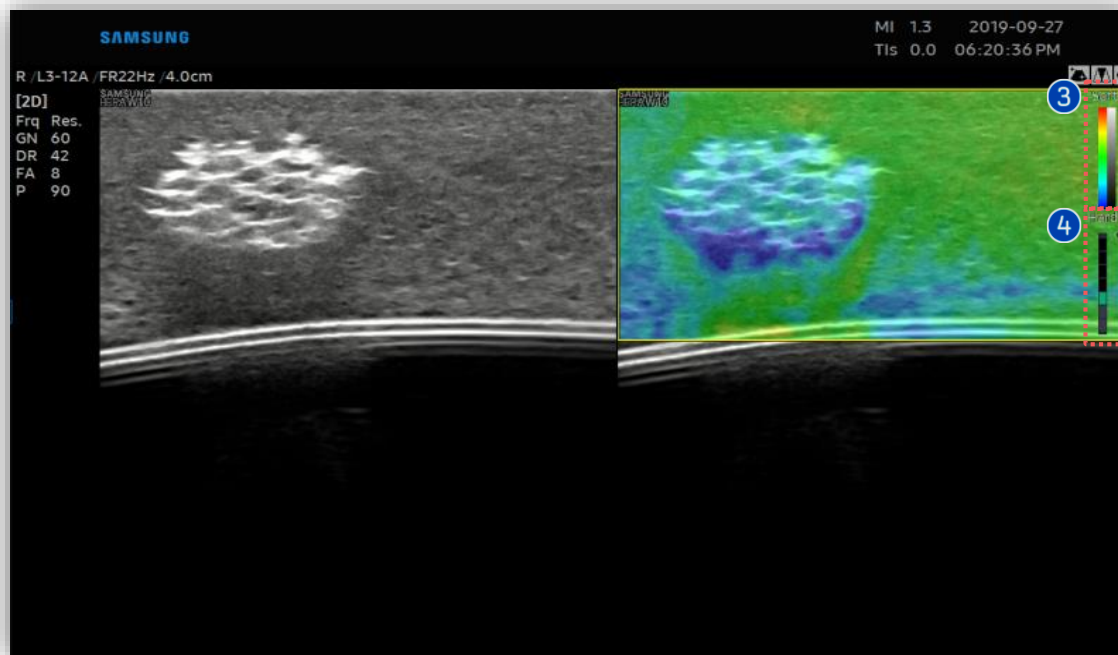
2 ElastoSscan+

Tab [ElastoSscan+] button on the touch screen to start E-Strain™.

★ Tips

E-Strain™ is a tool to measure strain based on a 2 ROI method.

3. Indicators of ElastoScan+



3 Color bar

It represents stiffness of tissues.

The color map can be changed. There are 6 color map options.

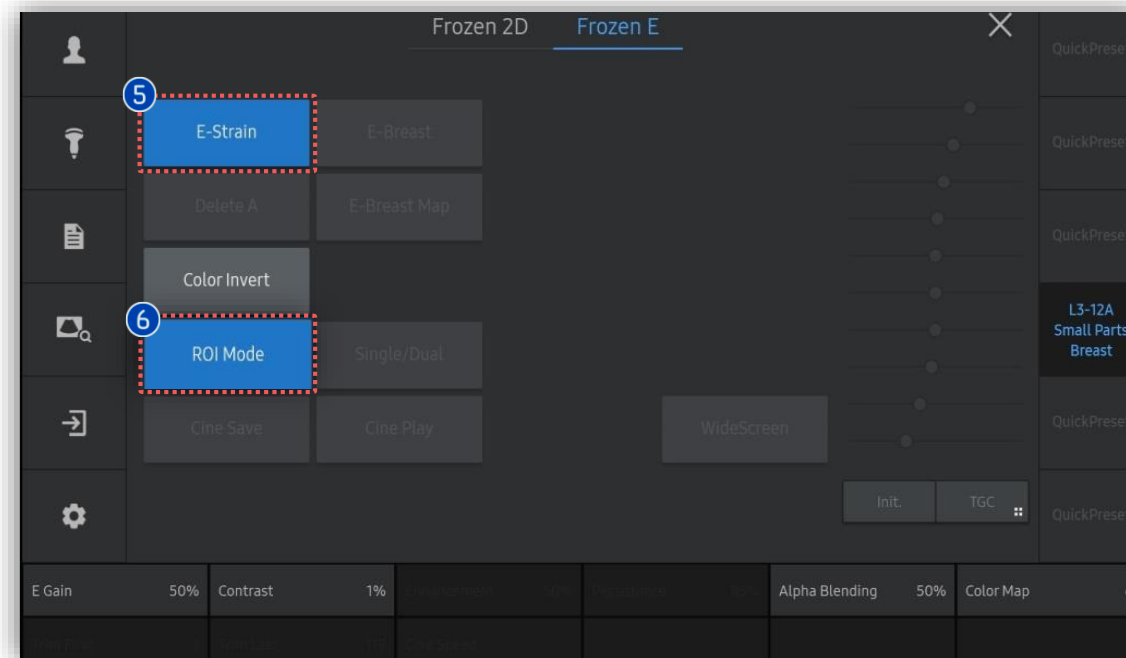
4 Compression guide bar

Apply gentle compressions with the probe while imaging the breast. Capture the image when compression guide bar is between Step 3 and 7 (indicates appropriate pressure).

★ Tips

- Step 0 : The probe is almost stationary.
- Step 1 - Step 2 : There is not enough pressure.
- Step 3 - Step 7 : There is appropriate pressure.

4. Activate E-Strain™



5 ROI Mode

When using E-Strain™, you can select or deselect [ROI Mode] depending on the area of interest.

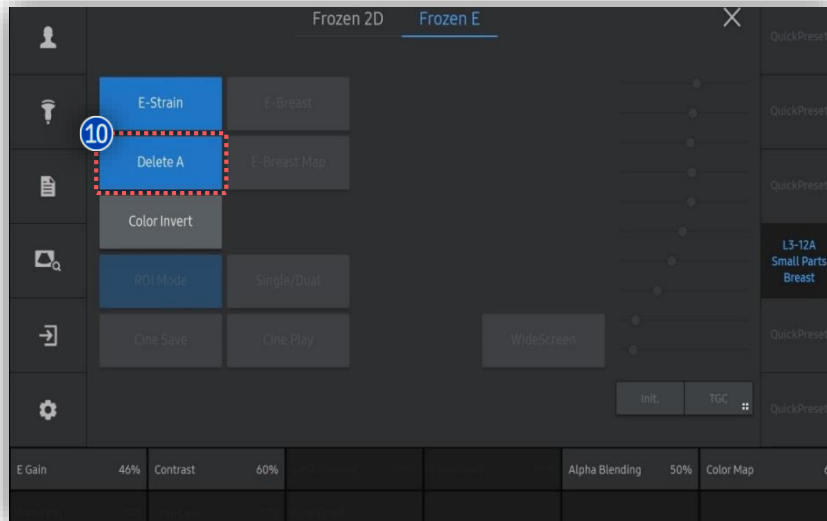
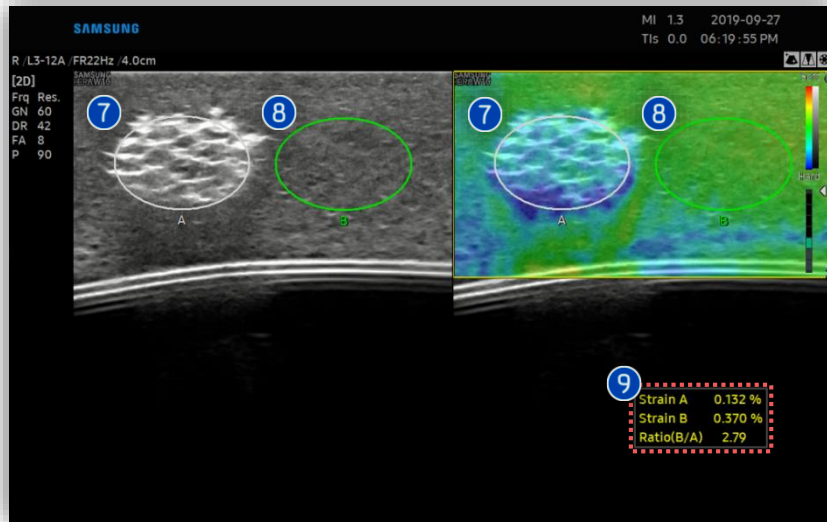
6 E-Strain

After the image is frozen, the [E-Strain] button appears on the touch screen. Tap [E-Strain] button to measure the strain ratio.

★ Tips

The strain elastography image quality and the proper placement of the ROI are important to reduce the strain ratio measurement errors.

5. Set ROI for Strain Ratio Calculation



7 ROI A

Place the ROI over the lesion on the 2D image and press the [Set] button. If necessary, adjust the position and size of the ROI circle using the trackball before pressing [Set] button.

8 ROI B

Next, place ROI B on the reference area (when imaging the breast, it should be placed on fatty breast tissue) and press the [Set] button.

9 Result

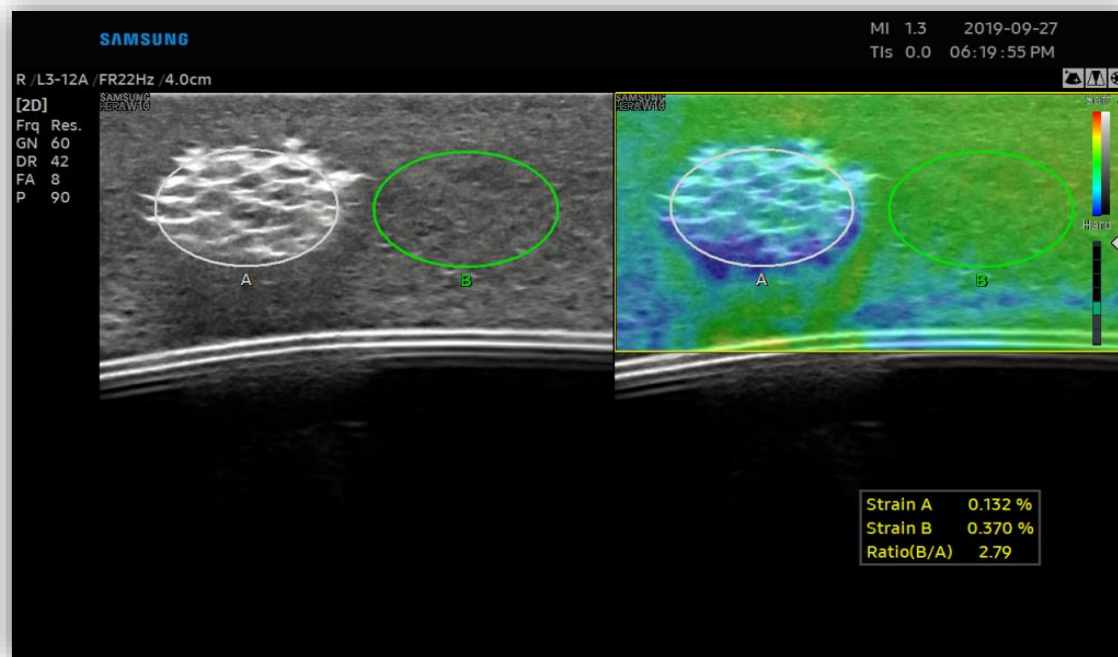
The Strain A, Strain B, and Ratio (B/A) results are shown on the bottom right of display monitor.

※ The displayed results may vary according to the regulatory approval status of each country.

10 [Delete A] or [Delete B]

If you want to delete A or B ROI, select [Delete A] or [Delete B] button on the touch screen.

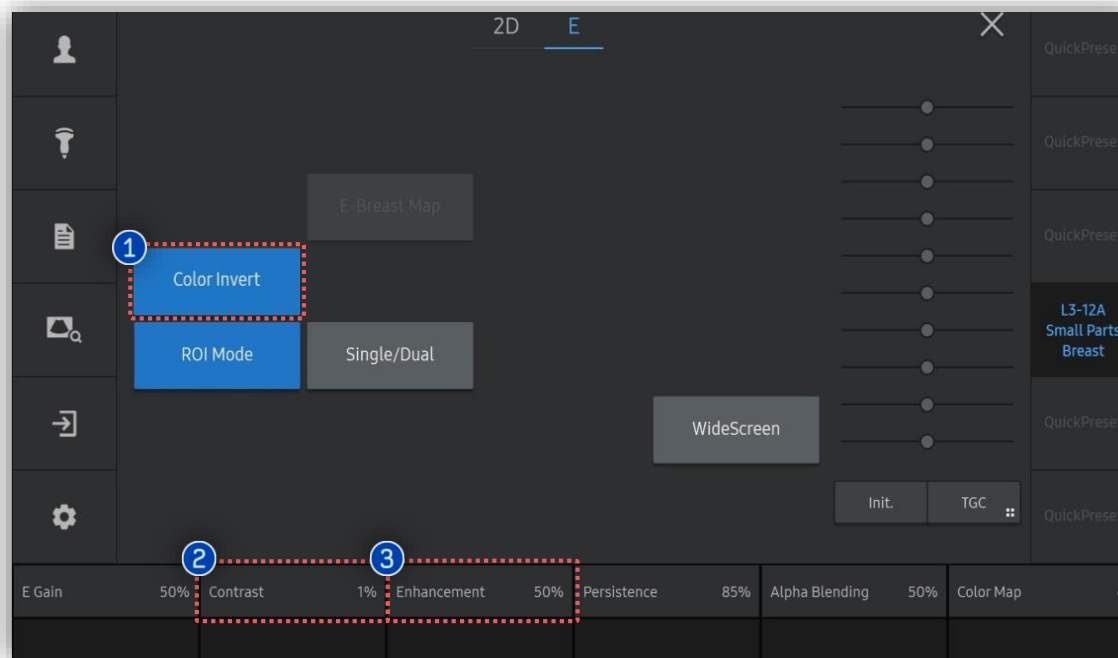
6. Result of E-Strain™



Results

- Strain A: Mean strain value inside the ROI A (not supported in USA and Canada).
- Strain B: Mean strain value inside the ROI B (not supported in USA and Canada).
- Ratio(B/A): Ratio of Strain values (Strain B/Strain A) (not supported in Europe, China and Japan).

6. Result of E-Strain™



① Color Invert

To reverse the color map, press [Color Invert] button on the touch screen.

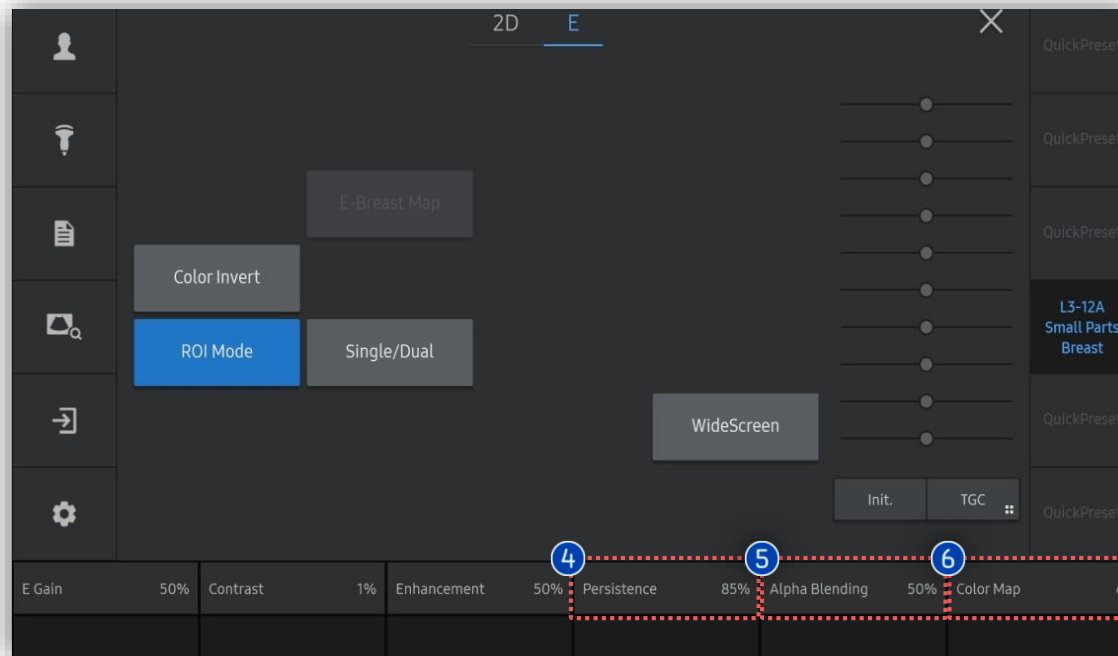
② Contrast

This feature adjusts the contrast based on the image mode. It has values between 1% and 100%.

③ Enhancement

Adjust the enhancement of the image between 0 and 100%. A higher value provides more clearly defined boundaries.

7. Adjust Parameters



4 Persistence

The feature controls the E-Strain frame average. The higher this value is, the higher the frame averaging will be. Increasing the persistence level will reduce the frame rate. For a higher frame rate, decrease the persistence level.

5 Alpha Blending

This feature superimposes the E-mode image over the 2D image. It has values between 0% and 100%. Setting it to 0% shows an E image only, and setting it to 100% shows a 2D image only.

6 Color Map

Select the color map of the Elastoscan. Press the button on the touch screen or use the dial-button to select from up to seven types.

- The features mentioned in this document may not be commercially available in all countries. Due to regulatory reasons, their future availability cannot be guaranteed.
- Do not distribute this internal document to customers unless relevant regulatory and legal affairs officers approve such distribution.
- This product is a medical device, please read the user manual carefully before use.
- This document is provided to help you understand the feature.
- This User Quick Guide is based on HERA W10 V1.03.03d
- Disclaimer: Some Images in this content were obtained from other system.

SAMSUNG MEDISON CO., LTD.

© 2024 Samsung Medison All Rights Reserved.

Samsung Medison reserves the right to modify the design, packaging, specifications, and features shown herein, without prior notice or obligation.