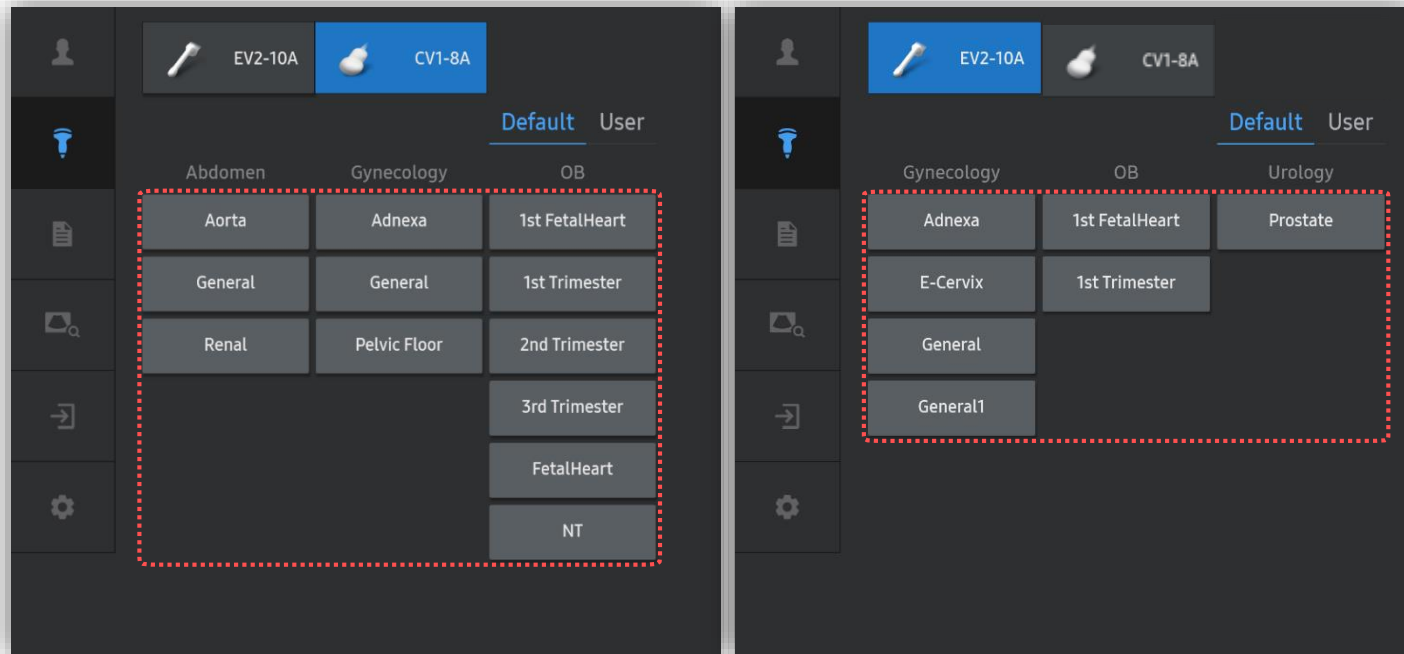


5D LB™ (Long Bone)

HERA W10 Quick Guide



1. Probe and Preset



※ 5D LB™ can be operated under the following conditions :

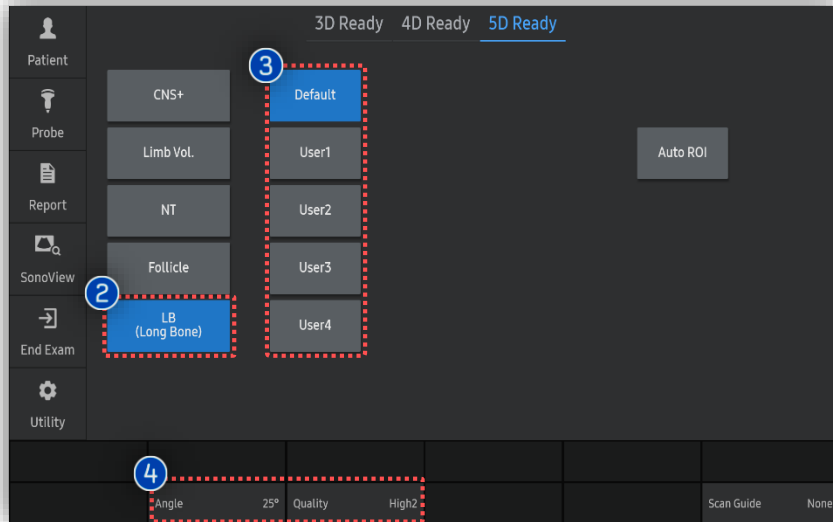
Probe	Application
CV1-8A EV2-10A EV3-10B EV2-12 (Elite Only)	All Application

5D LB™

2. Activate 5D LB™ (Before 3D Acquisition)

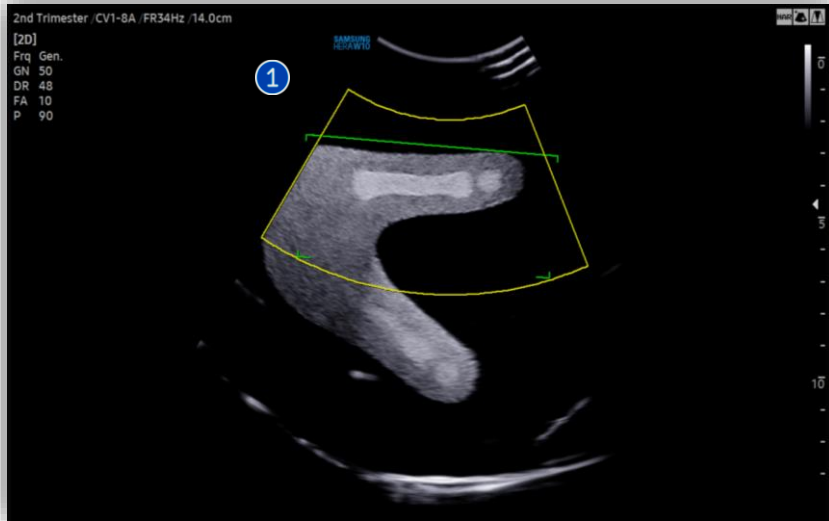


1	5D Button	Press the [5D] button on the control panel.
2	LB (Long Bone)	Tap [LB] to activate 5D LB™.
3	Preset	Select preferred preset between default and users. Each 5D feature can have its own preset parameters.
4	Parameters	Scan [Angle] and [Quality] are customizable.
5	Image acquisition	Find long bone structures such as femur, tibia, fibular, humerus, radius and ulna.

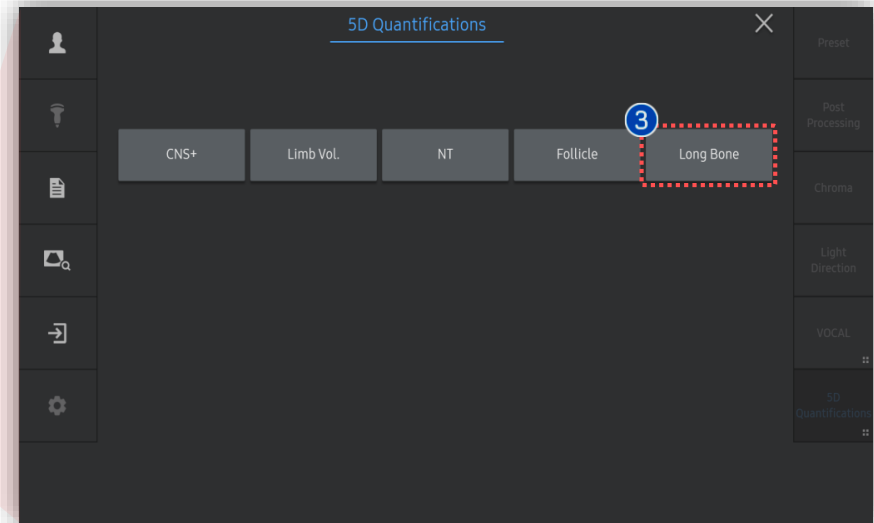
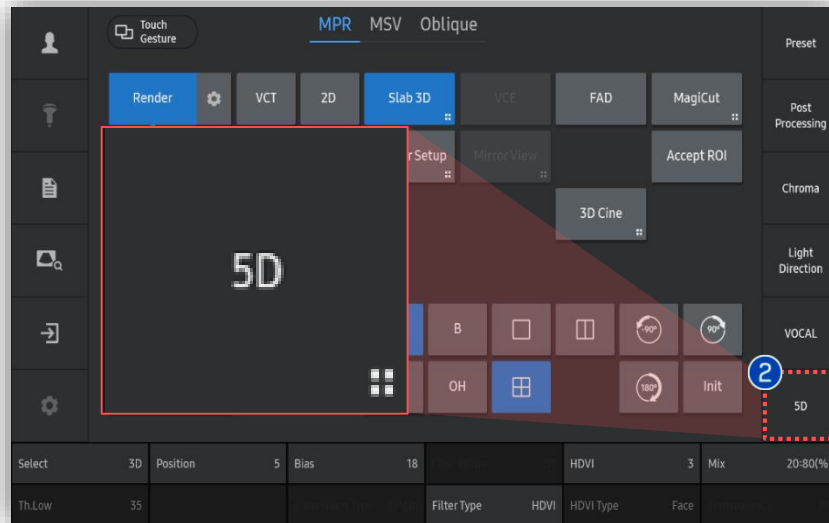


5D LB™

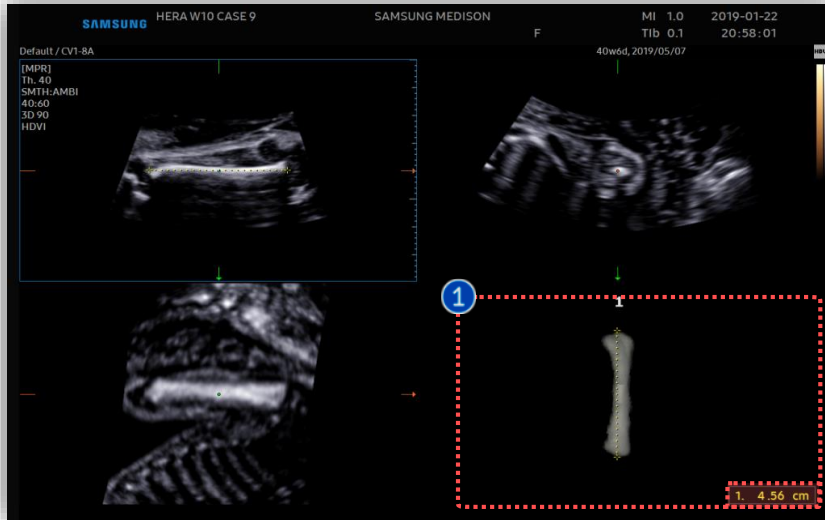
3. Activate LB™ (After 3D Acquisition)



1 Image acquisition	Find long bone structures such as femur, tibia, fibular, humerus, radius and ulna.
1 5D	Tap to activate [5D] features.
2 Long Bone	Tap to activate [Long Bone].



4. Result and Assign the Name



1 Result Image

After selecting [Long Bone], bone structure will be automatically detected as a 3D rendered image and bone length will be displayed at the bottom.

★ Tips

Through 3D rendered long bone image, overall morphological information will be provided.



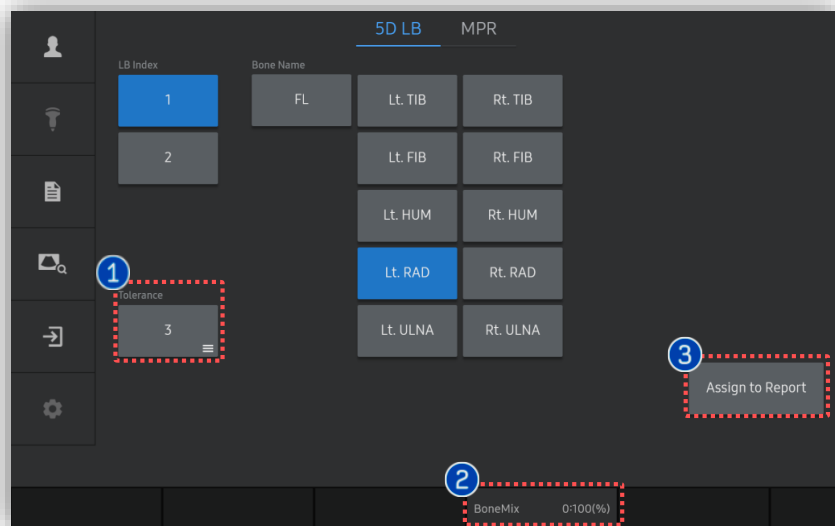
2 LB Index

It provides the geometry for identifying tibia and/or fibula (multiple selection is available).

3 Bone Name

Specify the long bone type.

5. Adjust 5D LB™ Parameters



1 Tolerance

You can adjust the tolerance of Long Bone (1-5).

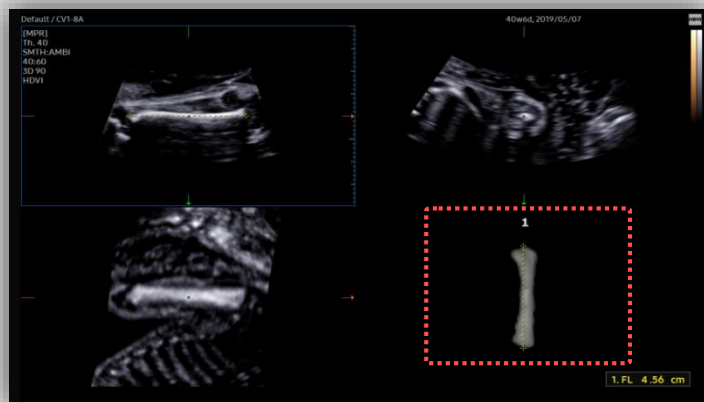
As Tolerance is higher, more echoes will be included in detected long bone.

2 Bone Mix

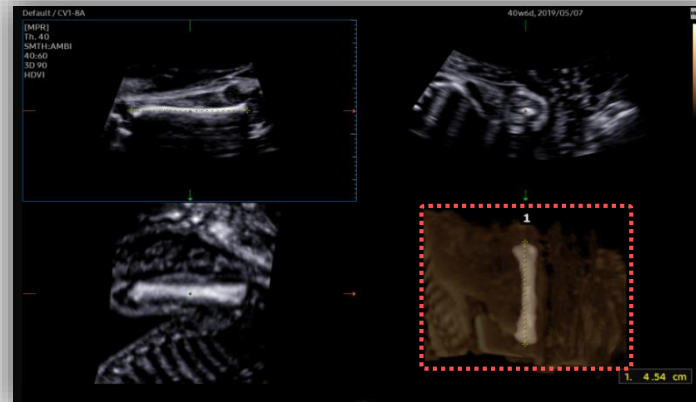
Adjust the transparency of structures surrounding the bones.

3 Assign to Report

The measured 5D LB values are saved in the report.



[BoneMix 0 : 100 (%)]



[BoneMix 40 : 60 (%)]

- The features mentioned in this document may not be commercially available in all countries. Due to regulatory reasons, their future availability cannot be guaranteed.
- Do not distribute this internal document to customers unless relevant regulatory and legal affairs officers approve such distribution.
- This product is a medical device, please read the user manual carefully before use.
- This document is provided to help you understand the feature.
- This User Quick Guide is based on HERA W10 V1.03.03d.
- Disclaimer: Some Images in this content were obtained from other system.

SAMSUNG MEDISON CO., LTD.

© 2024 Samsung Medison All Rights Reserved.

Samsung Medison reserves the right to modify the design, packaging, specifications, and features shown herein, without prior notice or obligation.