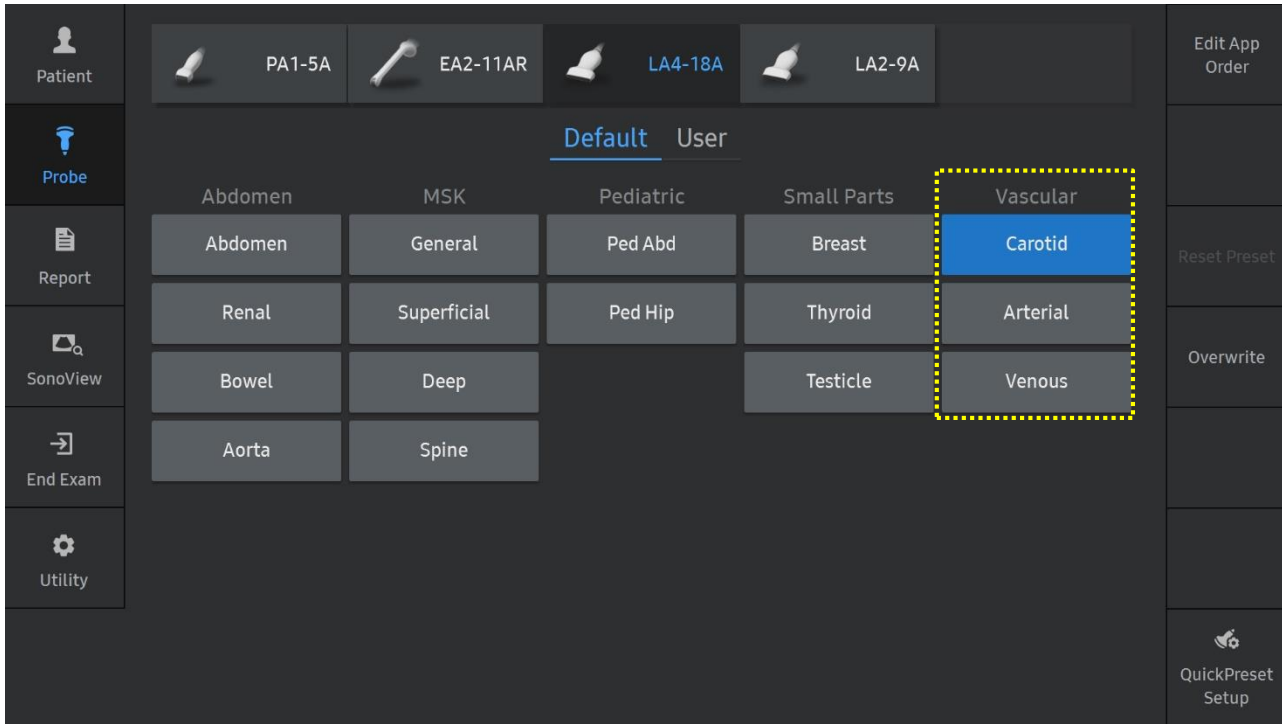


# AutoIMT+

## V series Quick Guide



# 1. Probe and Preset

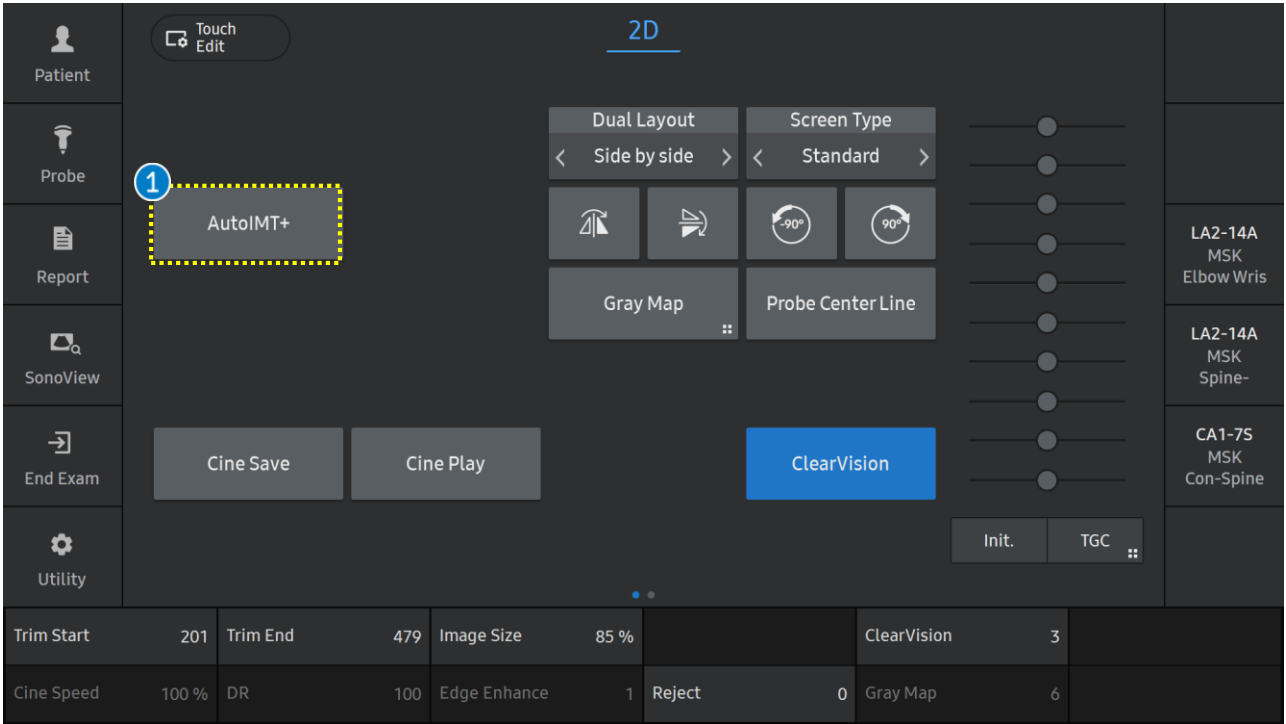


※ Available application and preset

Probe	All Linear Probe
Application	Vascular
Preset	Carotid, Arterial, Venous

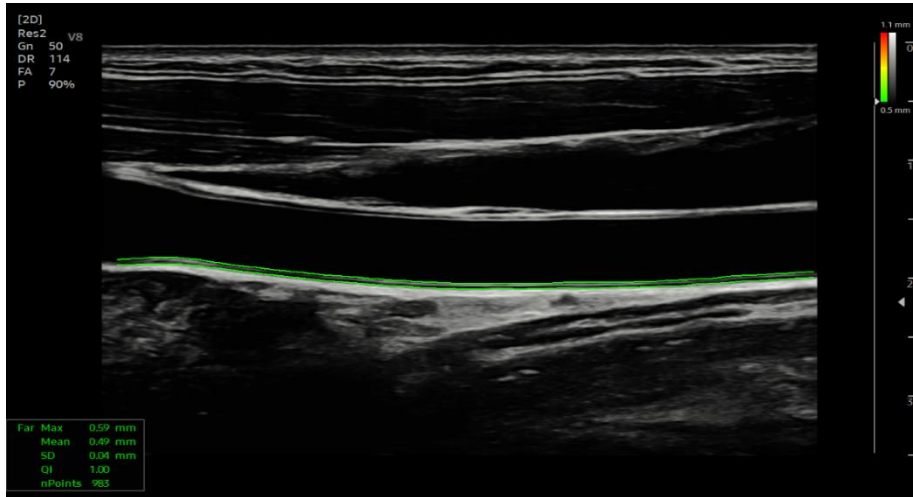
AutoIMT+

# 2. Start Auto IMT+



1 Auto IMT+ Obtain a longitudinal view of the carotid artery and then select [Auto IMT+].

# 3. Select Display Type (1)



1 Display Type

After pressing Auto IMT+, the system will automatically detect IMT. Select display type, either [Far] or [Near + Far] on the touchscreen. (Far is default)

AutoIMT+

1 Display

Far Near+Far

Assign Result

CCA Bulb

ICA ECA

Activate

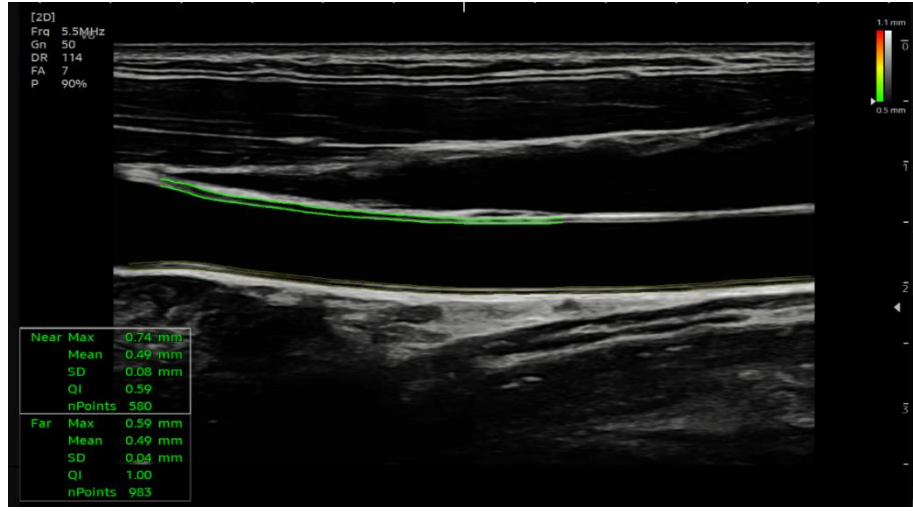
Near Far

Edit Analysis

Laterality	Lt	Location	Prox	Font Size	14	
						Zoom Position

AutoIMT+

# 3. Select Display Type (2)

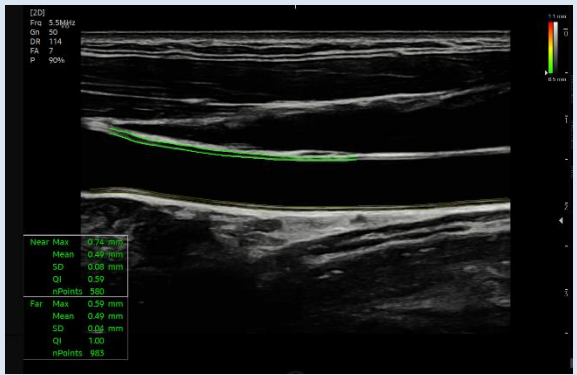


1 Display Type

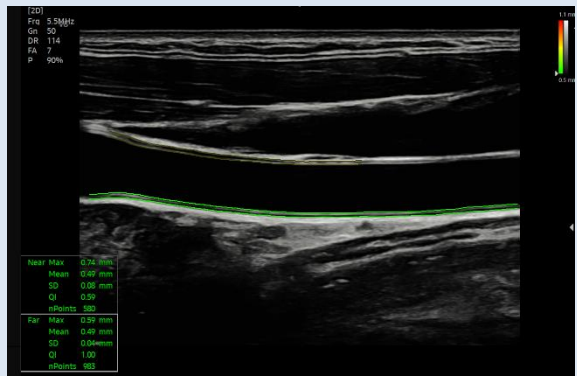
If [Near + Far] type is selected, both near zone and far zone of IMT are displayed.

2 Activate

Choose Activate type, either [Near] or [Far].



[Near]



[Far]

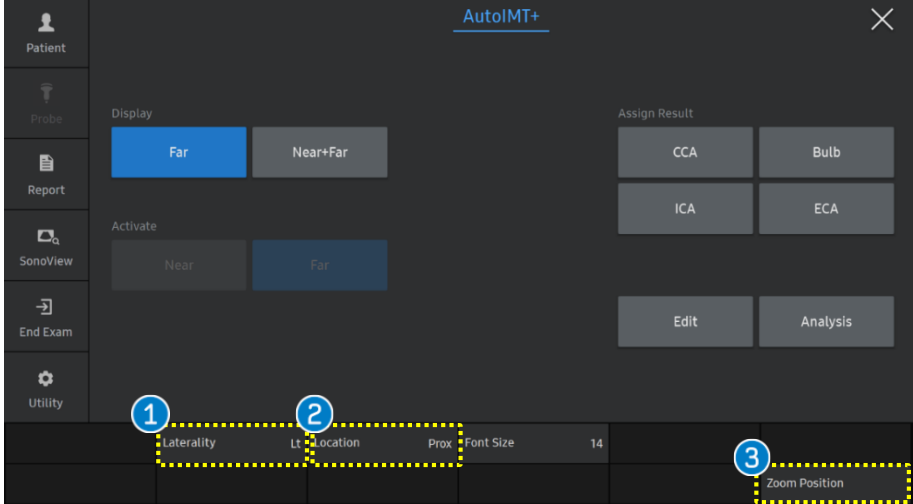
AutoIMT+ interface showing the 'Display' and 'Activate' options. The 'Display' section has 'Near+Far' selected (indicated by a red dashed box and '1'). The 'Activate' section has 'Near' and 'Far' options (indicated by red dashed boxes and '2').

Assign Result	CCA	Bulb
	ICA	ECA
	Edit	Analysis

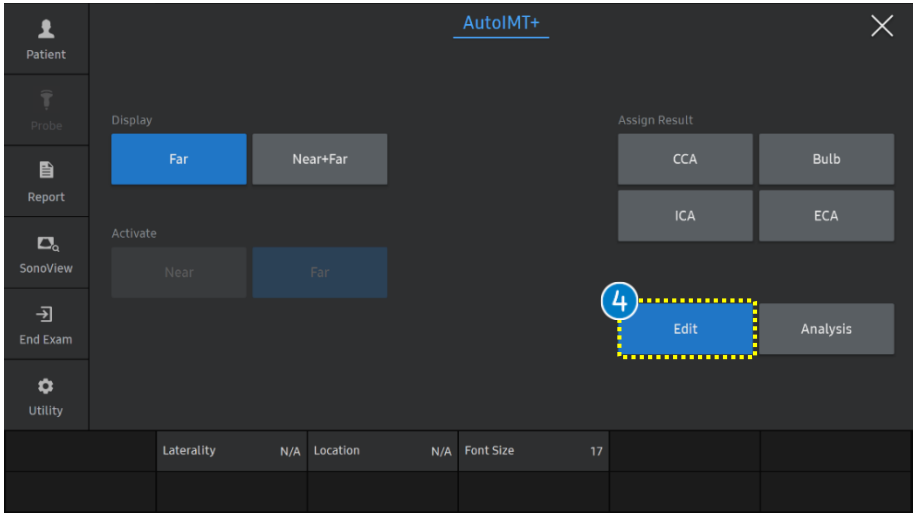
Laterality	Rt	Location	Prox	Font Size	16
------------	----	----------	------	-----------	----

AutoIMT+

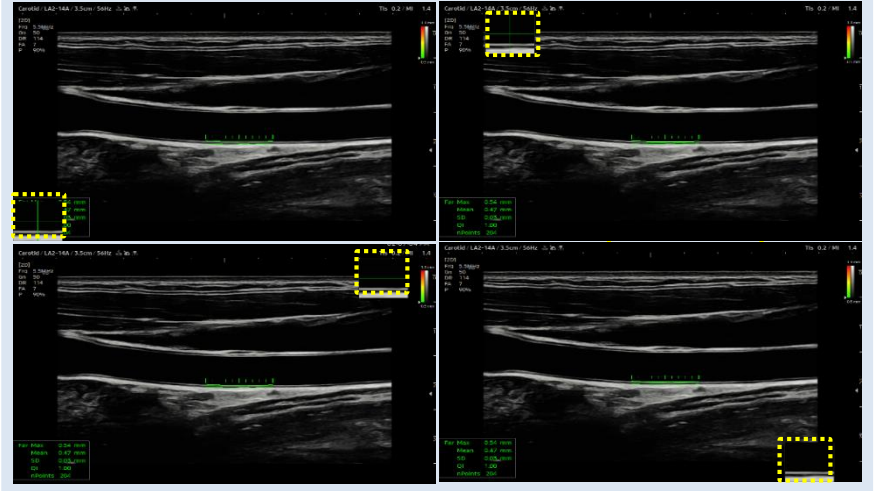
# 4. Parameters



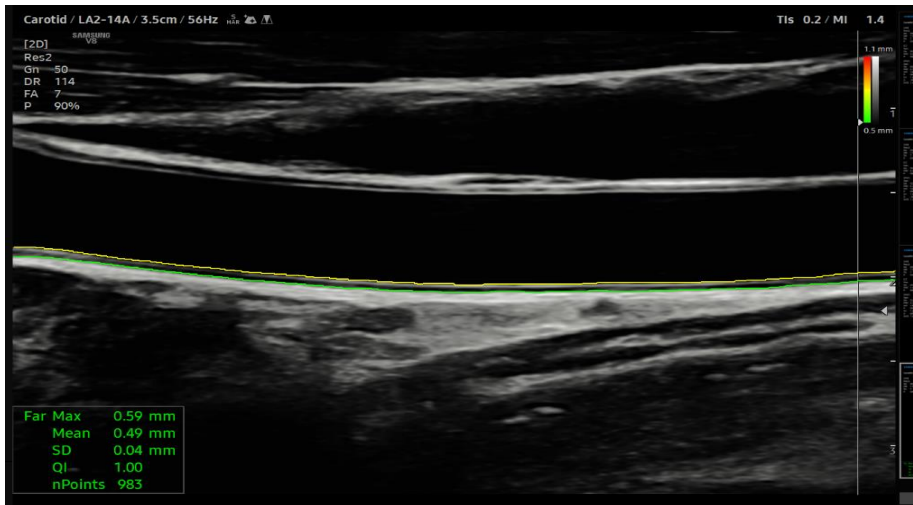
1 Laterality	Select the direction of the blood flow, either Lt or Rt.
2 Location	Select the measurement position of the vessel among Prox, Mid, Dist, and N/A.
3 Zoom Position	If you rotate the Knob, you can adjust the position of the zoom window. (*Zoom window: It displays an image by enlarging the area surrounding the marker)



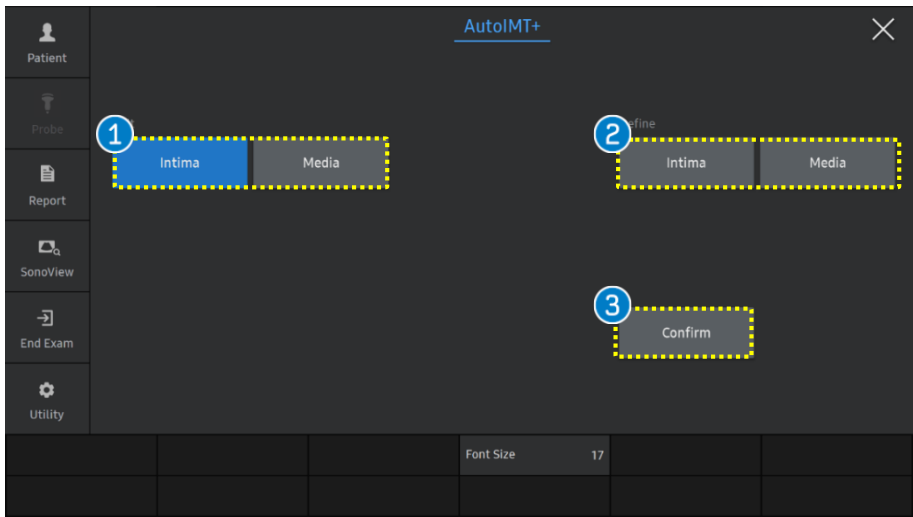
4 Edit	You can edit IMT line.
--------	------------------------



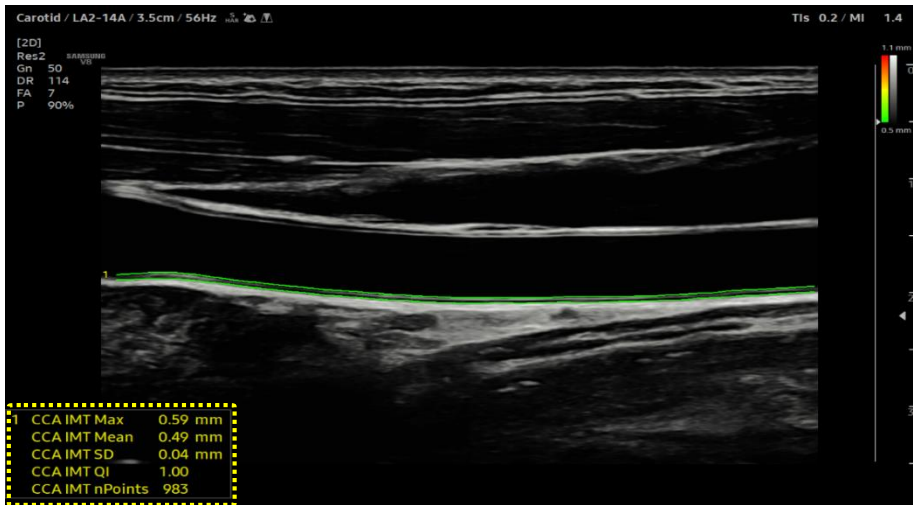
# 5. Edit



<p>1 Edit</p>	<p>Select [Intima] or [Media] to edit. For example, if you select [Intima], the line will be changed from green to yellow and the line can be edited manually with set button and trackball.</p>
<p>2 Define</p>	<p>If you select Define, the IMT line automatically detected by the system will be deleted and the IMT line can be drawn manually.</p>
<p>3 Confirm</p>	<p>If you press [Confirm], the line that you modified will be assigned.</p>



# 6. Assign to Report



1 Assign Result

Select measurement items in [Assign Result], the measurement item will be assigned to report.

AutoIMT+

1 Assign Result

CCA Bulb  
ICA ECA

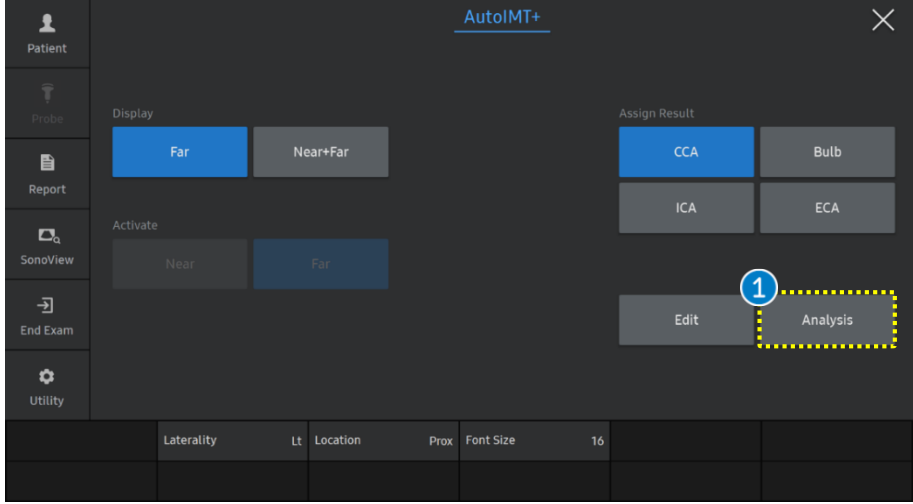
Report: Far, Near+Far

Activate: Near, Far

End Exam: Edit, Analysis

Laterality Lt Location Prox Font Size 16

# 7. Analysis (1)

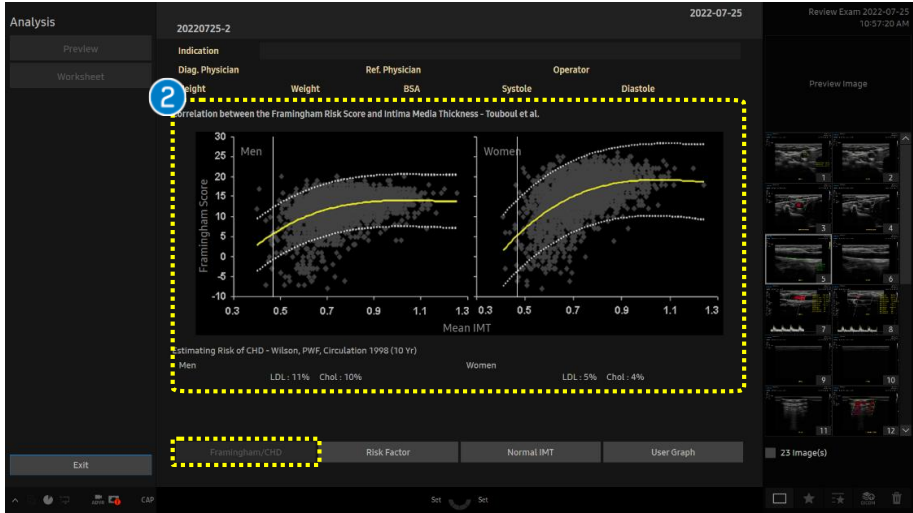


Click the [Analysis] button on the touch screen.

There are four supported options in analysis.

**1 Analysis**

- Framingham/CHD
- Risk factor
- Normal IMT
- User Graph



You can see the correlation between the Framingham Risk Score and Intima Media Thickness.

**2 Framingham /CHD**

- Check the measure bar on the graph, that shows the patient's location.
- If the measure result is lower or bigger than the Framingham graph, It may not be displayed.

# 7. Analysis (2)



3 Risk Factor It's the reference graph based on Mannheim Carotid Intima-Media Thickness Consensus. (2004 - 2006)

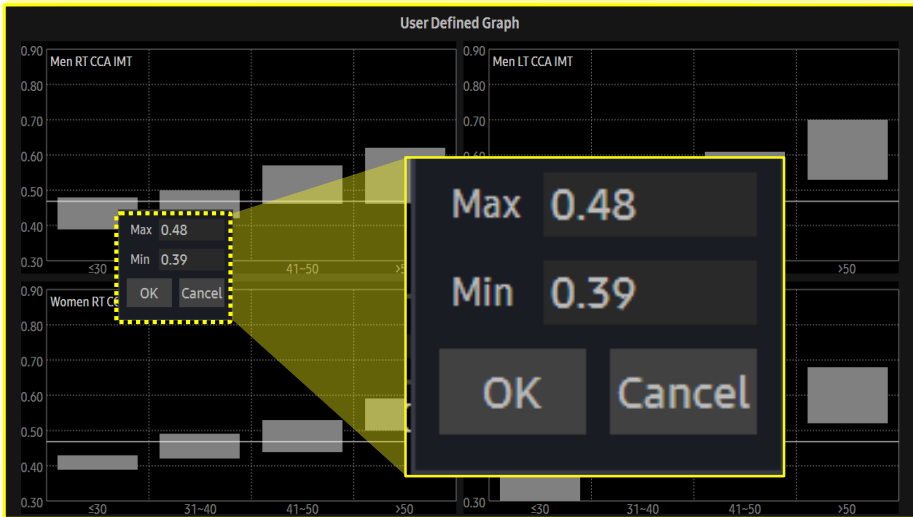
4 Normal IMT This is a new tool for diagnosis and treatment of cardiovascular risk.



# 7. Analysis (3)



5 User Graph You can analyze measurement results by adjusting this 'user graph' to suit your preference.



- The features, options may not be commercially available in some countries.
- Sales and shipments are effective only after the approval by the regulatory affairs. Please contact your local sales representative for further details.
- This Quick guide does not include all of the details of instruction, for more detail, please refer to HERA W10 User Manual.
- Do not distribute this document to customers unless relevant regulatory and legal affairs officers approve such distribution.
- This User Quick Guide is based on V Series V1.05.
- Disclaimer: Some Images in this content were obtained from other system.

**SAMSUNG MEDISON CO., LTD.**

© 2024 Samsung Medison All Rights Reserved.

Samsung Medison reserves the right to modify the design, packaging, specifications, and features shown herein, without prior notice or obligation.