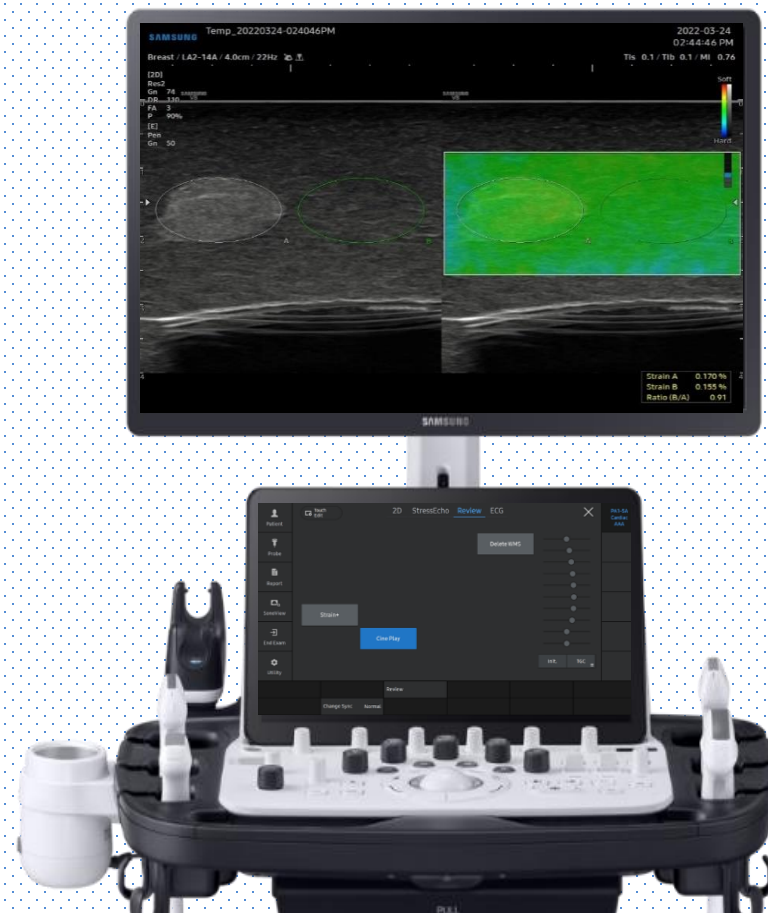


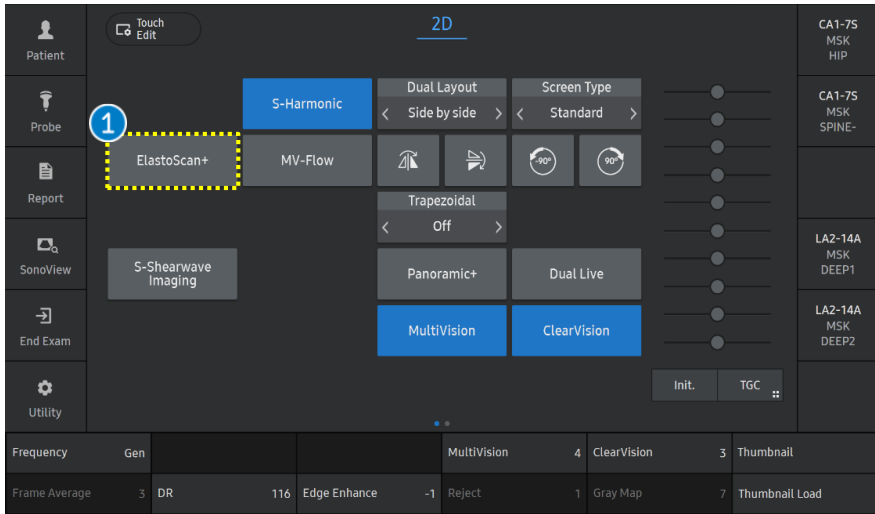
E-Strain™

V series Quick Guide

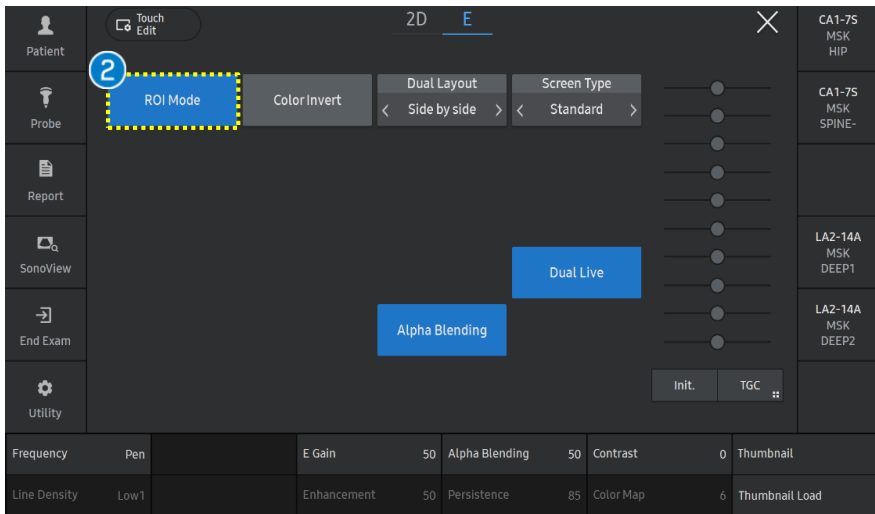


E-Strain™

1. Start to E-Strain™ (1)



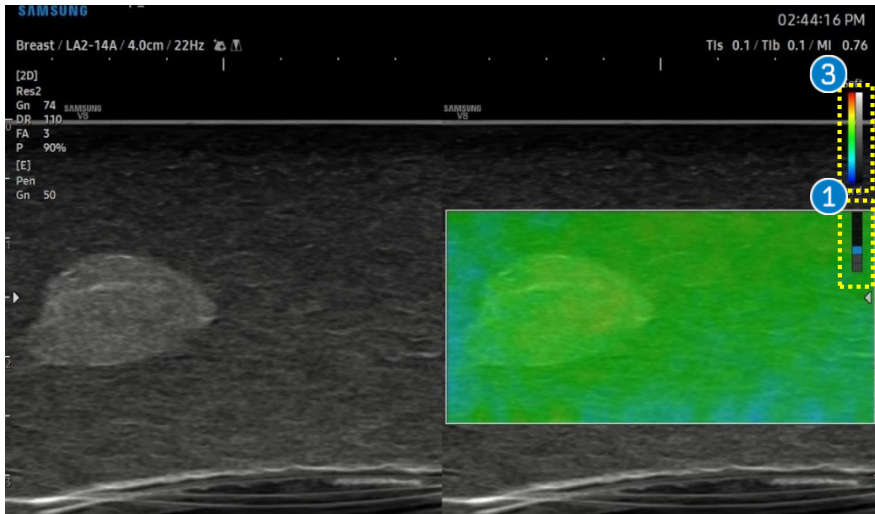
1 Elastoscan+ Tap the [ElastoScan+] button on the touch screen to start E-Strain™.



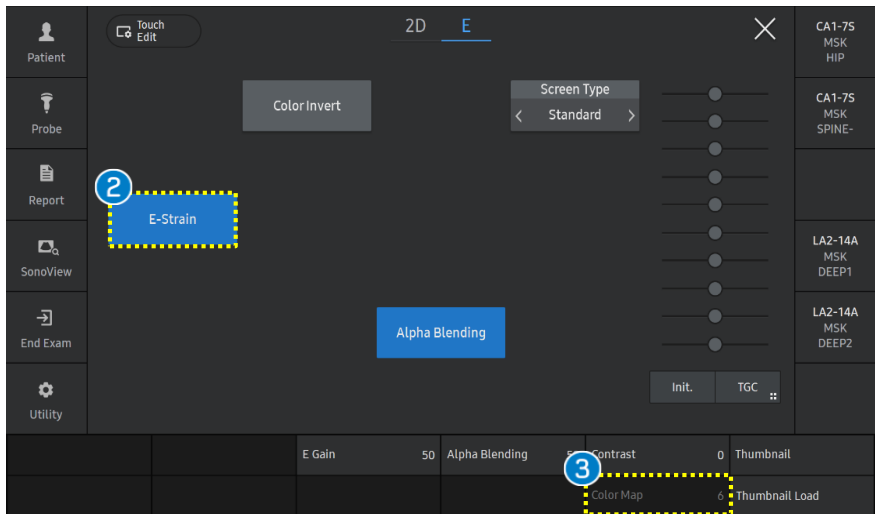
2 ROI mode When using E-Strain™, you can turn on or off [ROI Mode] depending on the area of interest.

E-Strain™

2. Start to E-Strain™ (2)

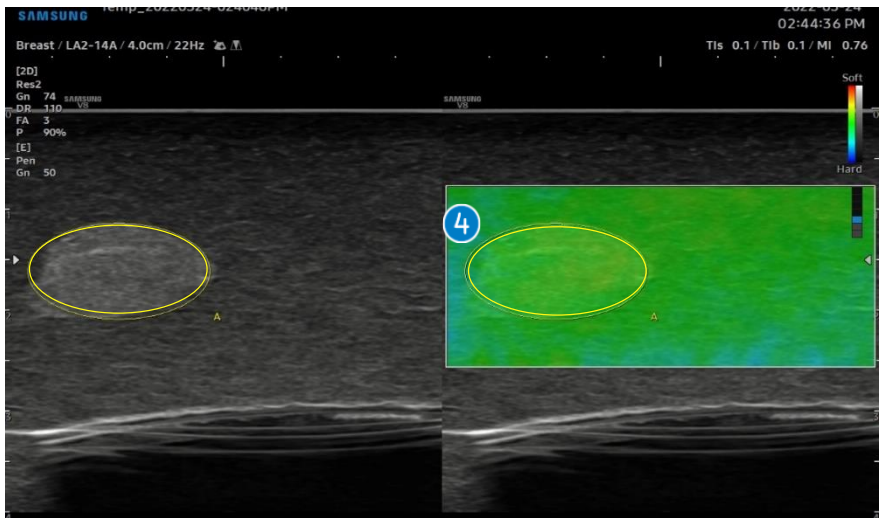


<p>1 Compression guide bar</p>	<p>Use gentle compressions with the probe while imaging the breast. Capture the image when compression guide bar is between Level 3 and 5. (indicates proper compression speeds)</p>
<p>2 E-Strain</p>	<p>After the image is frozen, the [E-Strain] button appears on the touch screen. Tap the [E-Strain] button to measure the elasticity value. (strain ratio)</p>
<p>3 Elastoscan color bar</p>	<p>It represents stiffness of tissues. The color map can be changed using the [Color map] button.</p>



E-Strain™

2. Start to E-Strain™ (3)

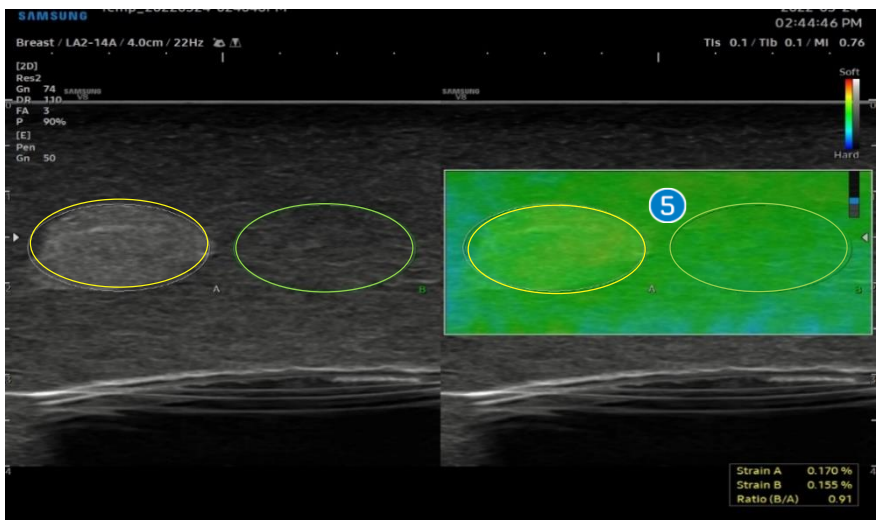


4 ROI A

Place the ROI over the lesion on the 2D image and press the [Set] button. If necessary, adjust the position and size of the ROI circle using the trackball before pressing the [Set] button. You should adjust ROI tightly within the lesion.

5 ROI B

Next, place ROI B on the reference area (when imaging the breast, it should be placed on fatty breast tissue) and press the [Set] button.

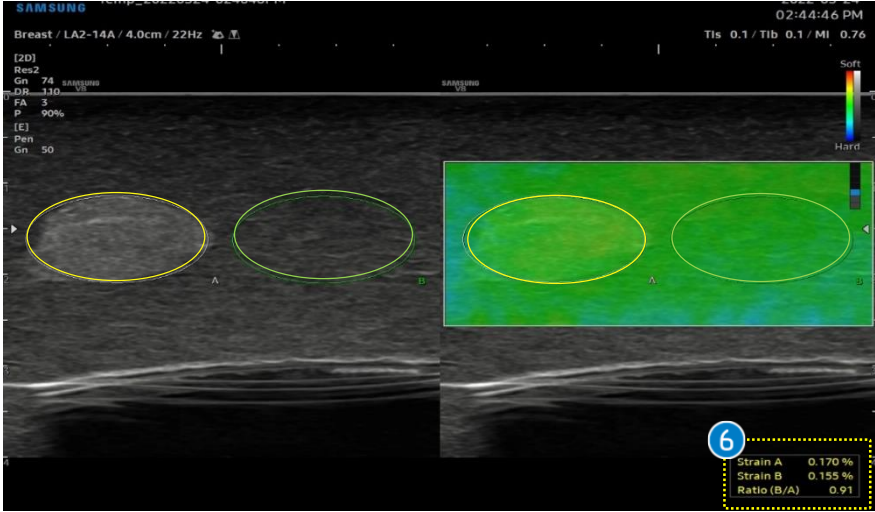


★Tips

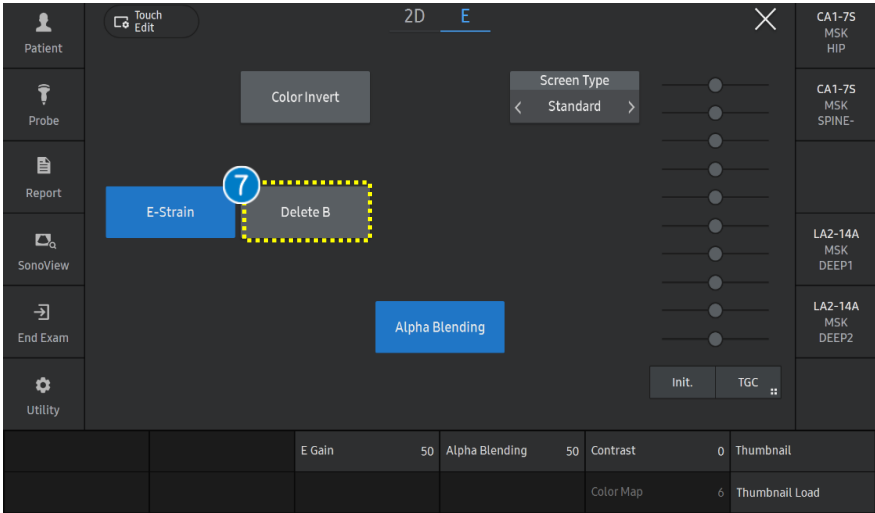
ROI A and ROI B must be the same size and located in the same depth.

E-Strain™

2. Start to E-Strain™ (3)

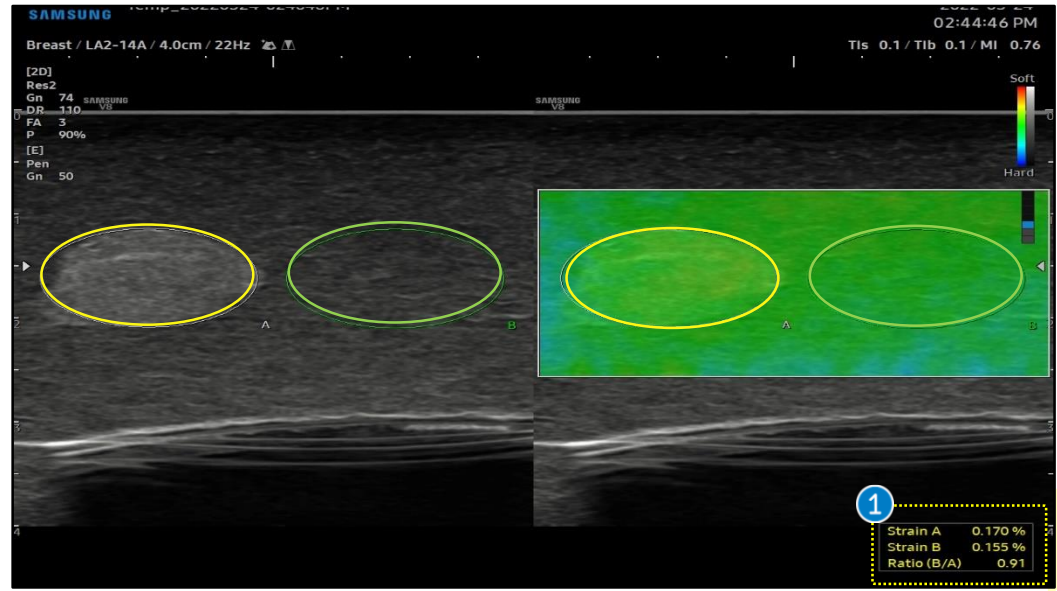


- 6 Result
 - ✧ The Strain A, Strain B, and Ratio (B/A) results are shown on the bottom right of the display monitor.
 - ✧ The displayed results may vary according to the regulatory approval status of each country.
- 7 [Delete A] or [Delete B]
 - If you want to delete ROI A or B, select the [Delete A] or the [Delete B] button on the touch screen.



E-Strain™

3. Results of E-Strain™



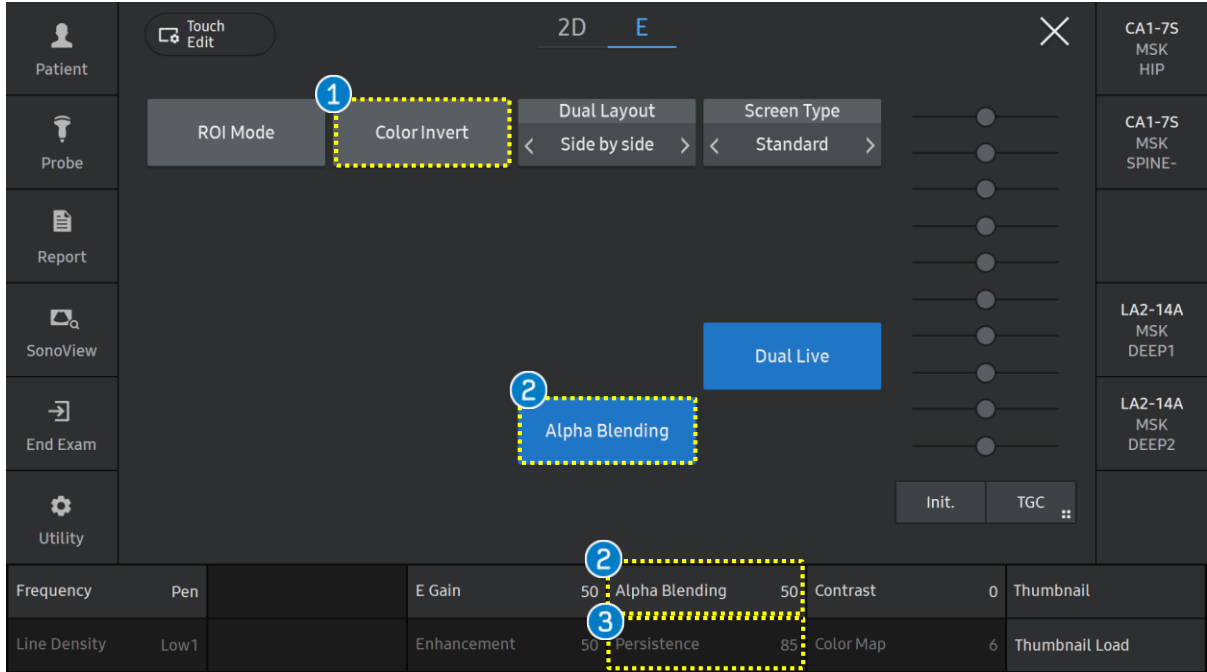
Strain A	0.170 %
Strain B	0.155 %
Ratio (B/A)	0.91

- 1 Results
- Strain A: Mean strain value inside ROI A (not supported in USA and Canada).
 - Strain B: Mean strain value inside ROI B (not supported in USA and Canada).
 - Ratio(B/A): Ratio of Strain values (Strain B/Strain A)

★Tips

The displayed results may vary according to the regulatory approval status or patent of each country.

4. Adjust parameters



1	Color Invert	To reverse the color map, tap the [Invert Color Map] button on the touch screen.
2	Alpha Blending	This feature superimposes the E-mode image over the 2D image. Setting it to 0% shows an E image only, and setting it to 100% shows a 2D image only.
3	Persistence	The feature controls the E-Strain frame average. Changes in persistence level will affect the strain value due to the change in the number of frames being averaged.

- The features, options may not be commercially available in some countries.
- Sales and shipments are effective only after the approval by the regulatory affairs. Please contact your local sales representative for further details.
- This Quick guide does not include all of the details of instruction, fore more detail, please refer to V series User Manual.
- Do not distribute this document to customers unless relevant regulatory and legal affairs officers approve such distribution.
- This User Quick Guide is based on V series V1.05.
- Disclaimer: Some Images in this content were obtained from other system.

SAMSUNG MEDISON CO., LTD.

© 2024 Samsung Medison All Rights Reserved.

Samsung Medison reserves the right to modify the design, packaging, specifications, and features shown herein, without prior notice or obligation.