

RealisticVue™

V Series Quick Guide



1. Volume Acquisition



① Volume acquisition

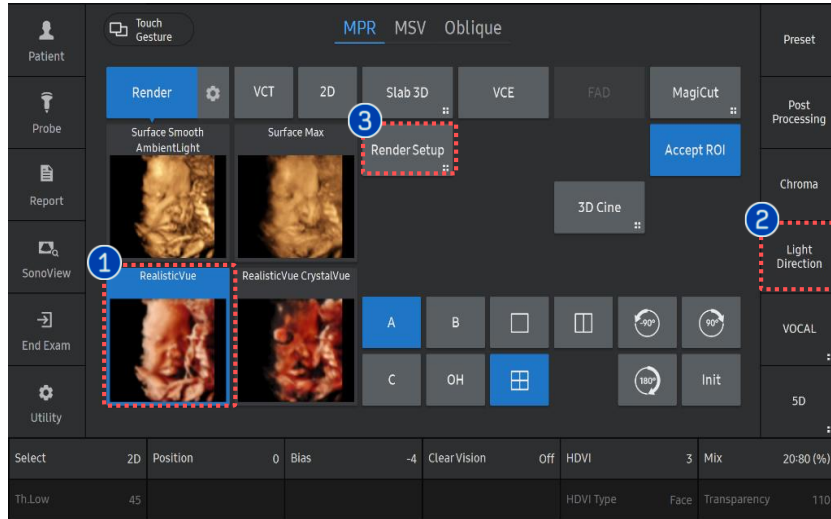
Acquired volume data with the structure you wish to apply RealisticVue™.

★ Tips

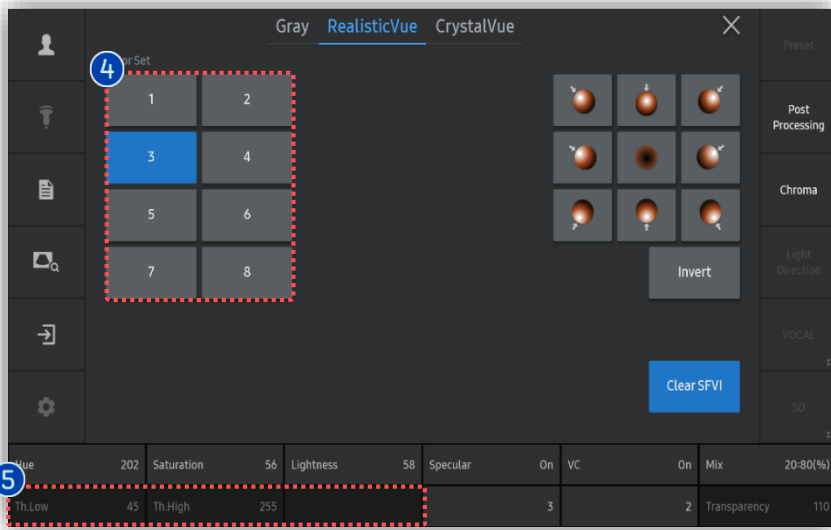
For fetal face 3D evaluation, obtain fetus profile as much as clear without interruption of hand or cord.

RealisticVue™

2. Apply Realisticvue™ (1)



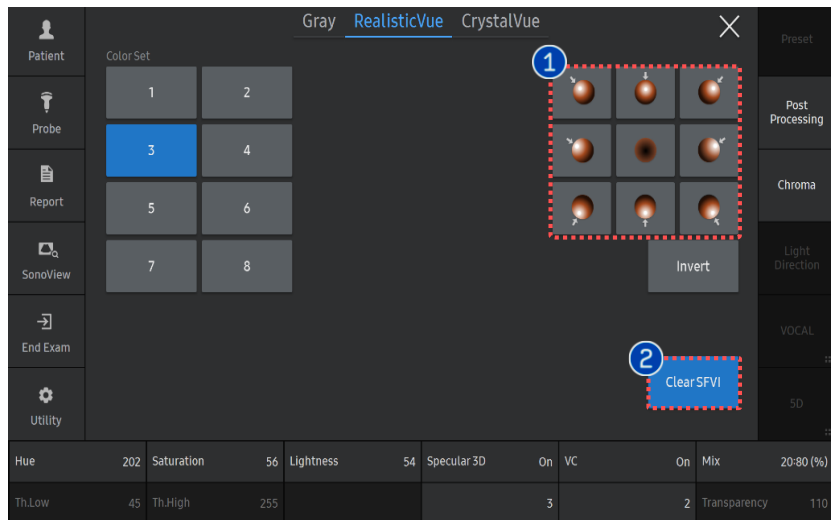
- 1 **RealisticVue** Tap [RealisticVue] to apply it.
- 2 **Light Direction** Tap [Light Direction] within short cut keys when you adjust the direction of light freely by trackball.
- 3 **Render Setup** Tap [Render Setup] on the touch screen to adjust parameters of RealisticVue.



- 4 **Color Set** Select color of RealisticVue effect among 8 designated options.
- 5 **Color parameters** For fine control of color effect, adjust Hue, Saturation and Lightness.
 - **Hue:** Shade of a color
 - **Saturation:** Purity or intensity of color
 - **Lightness:** Brightness of color

RealisticVue™

3. Apply Realisticvue™ (2)

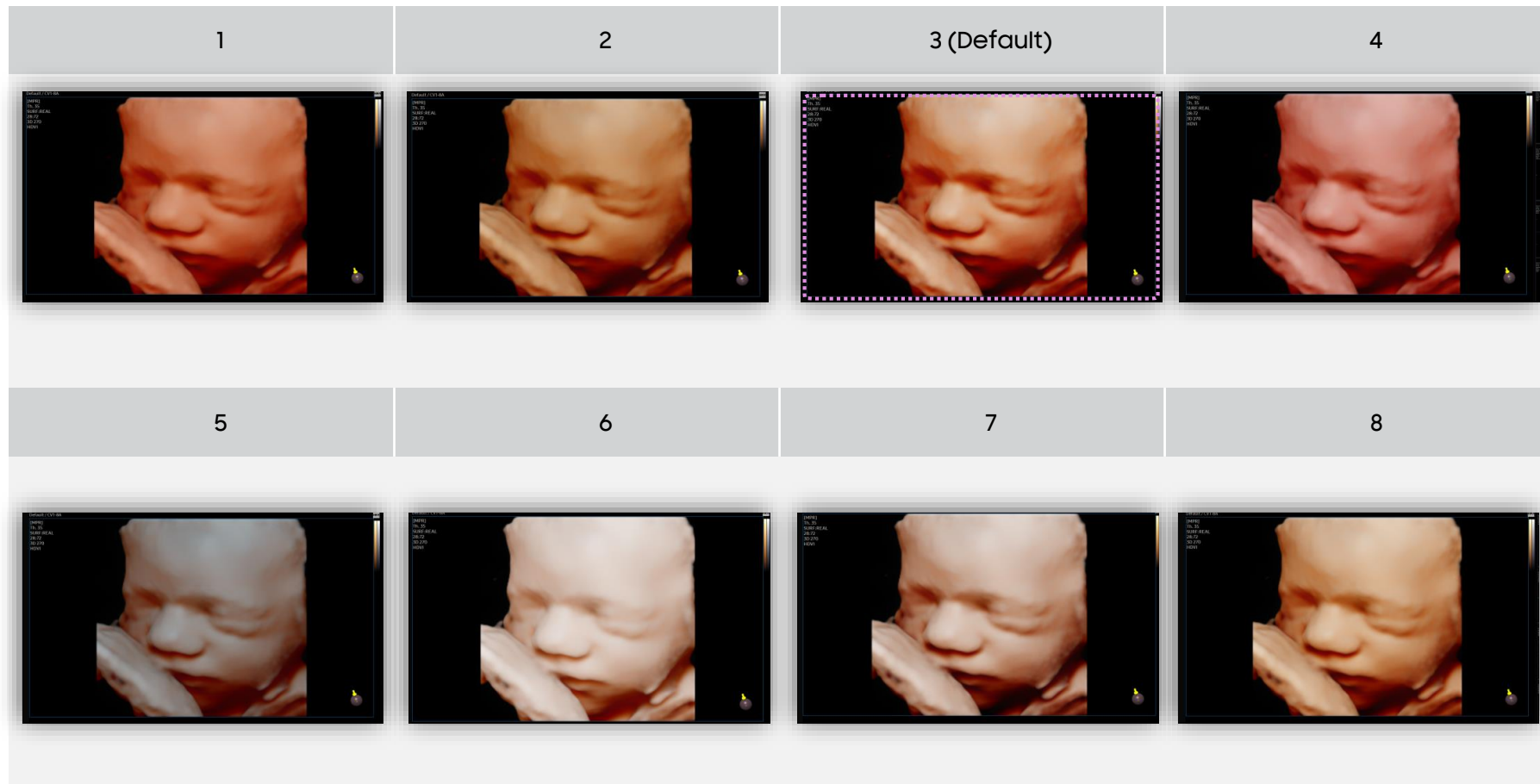


- 1 Pre-Defined Light Direction

Tap preferred light direction among 9 designated options.
- 2 Clear SFVI

Smart Filter Volume Imaging. It reduces noise.

3. Color Set of Realisticvue™



- The features, options may not be commercially available in some countries.
- Sales and shipments are effective only after the approval by the regulatory affairs. Please contact your local sales representative for further details.
- This Quick guide does not include all of the details of instruction, for more detail, please refer to V series User Manual.
- Do not distribute this document to customers unless relevant regulatory and legal affairs officers approve such distribution.
- This User Quick Guide is based on V series V1.05.
- Disclaimer: Some Images in this content were obtained from other system.

SAMSUNG MEDISON CO., LTD.

© 2024 Samsung Medison All Rights Reserved.

Samsung Medison reserves the right to modify the design, packaging, specifications, and features shown herein, without prior notice or obligation.